

“BREEDING BULLS IS NOTORIOUSLY  
DRIVEN BY FADS, NOT FACTS. AT  
LAWSONS ANGUS WE BELIEVE IN  
**PROVEN SCIENCE.**”

  
— HARRY LAWSON

2024 LAWSONS ANGUS WA

# ALBANY SALE

**1PM FRIDAY 10<sup>TH</sup> MAY**

605 FISHTRACK RD, MANYPEAKS, WA



LOW  
CARBON  
BEEF

**40**  
ANGUS BULLS  
ON OFFER

**SCIENCE NOT FICTION**

**LAWSONS**  
angus 

“MORE FERTILE COWS, RELIABLE  
HIGH ACCURACY CALVING EASE,  
AND SUPERIOR CARCASS TRAITS.”

*Harry Lawson*

— HARRY LAWSON





# 2024 WA ALBANY SALE 40 ANGUS BULLS

**1<sup>PM</sup> FRIDAY 10<sup>TH</sup> MAY**

605 FISHTRACK RD, MANYPEAKS, WA

## LAWSONS ANGUS



**Harry Lawson** 0407 101 145  
lawsons@lawsonsangus.com.au

**Bevan Ravenhill WA** 0428 532 447  
ravenhill.b@lawsonsangus.com.au

## SELLING AGENTS



**Wayne Mitchell** 0429 447 144  
**Elders Esperance** (08) 9071 9900  
**Elders Albany** (08) 9842 7900  
**Michael Forward** 0427 411004  
**Nathan King** 0488 582455  
**Tim Spicer** 0427 812 194

## SELLING AGENTS



**Colin Thexton** 0428 915 468

## AUCTION INTERFACED WITH



**Market Operations** (02) 9262 4222  
mktops@auctionsplus.com.au

# WELCOME TO OUR ANNUAL MAY 2024 ALBANY SALE **40 BULLS SELL**



## **40 YEARLING BULLS READY TO WORK!**

**THIS YEAR'S YEARLING BULLS ARE WELL DEVELOPED AND READY TO WORK. SALE FORMAT IS HELMSMEN FORMAT INTERFACED WITH AUCTIONS PLUS.**

All bulls sired by world-leading performance sires with an emphasis on calving ease, fertility, high growth, moderate maturity pattern and elite carcass potential.

### **SIRES:**

Moogenilla Quinella Q33  
Lawsons Miraculous Q44  
Lawsons Rocky R4010  
GAR Home Town  
HPCA Veracious, and;  
Sydgen Enhance.

Bulls rank in the top 10% of the breed for Heavy Grain Index (\$GN).

# REFERENCE SIRES

Breedplan EBVs sourced from  
Angus Australia, April 2024

1 MOONGENILLA QUINELLA Q33																		SIRE GAR FAIL SAFE				MGS EF COMPLEMENT 8088											
Birth Date:		8/7/19		ASA ID:		BWFQ33		ASA Status:		HBR		AM Status:		AMF		NH Status:		NHF		CA Status:		CAF		DD Status:		DDF		\$INDEX VALUE					
Calving Ease				Growth and Maternal						Fertility				Carcase				\$GN \$D \$A \$GS															
DIR		DTRS		GL		BWT		200		400		600		MCW		MILK		SS		DC		CWT		RIB		RUMP		EMA		RBY		IMF	
EBVs		2.3	10.0	-6.4	3.8	58	116	144	81	25	2.9	-2.3	98	-1.7	-0.7	10.9	0.2	4.4															
Acc		81	65	99	99	98	98	96	89	79	97	54	82	84	85	86	79	85	372	268	218	257											

2 LAWSONS MIRACULOUS Q44																		SIRE LAWSONS MOMENTOUS M518				MGS GAR ANTICIPATION 7261											
Birth Date:		6/3/19		ASA ID:		VLYQ44		ASA Status:		HBR		AM Status:		AMF		NH Status:		NHF		CA Status:		CAF		DD Status:		DDF		\$INDEX VALUE					
Calving Ease				Growth and Maternal						Fertility				Carcase				\$GN \$D \$A \$GS															
DIR		DTRS		GL		BWT		200		400		600		MCW		MILK		SS		DC		CWT		RIB		RUMP		EMA		RBY		IMF	
EBVs		4.5	-1.7	-7.1	3.8	49	91	112	104	10	3.2	-3.5	49	0.4	0.5	20.8	1.9	2.6															
Acc		76	65	97	96	93	93	91	86	78	90	53	81	81	81	80	75	82	315	236	197	223											

3 GAR HOME TOWN																		SIRE GAR ASHLAND				MGS GAR SURE FIRE											
Birth Date:		6/9/18		ASA ID:		USA19266718		ASA Status:		HBR		AM Status:		AMF		NH Status:		NHF		CA Status:		CAF		DD Status:		DDF		\$INDEX VALUE					
Calving Ease				Growth and Maternal						Fertility				Carcase				\$GN \$D \$A \$GS															
DIR		DTRS		GL		BWT		200		400		600		MCW		MILK		SS		DC		CWT		RIB		RUMP		EMA		RBY		IMF	
EBVs		4.6	1.0	-5.9	2.3	57	100	114	73	13	1.0	-6.2	70	-2.4	-4.1	13.9	1.0	4.9															
Acc		89	79	99	99	98	98	98	94	90	98	58	91	89	88	91	84	91	394	290	248	274											

4 LAWSONS ROCKY R4010																		SIRE GAR MOMENTUM				MGS PARINGA JUDD J5											
Birth Date:		23/8/20		ASA ID:		VLYR4010		ASA Status:		HBR		AM Status:		AMF		NH Status:		NHF		CA Status:		CAF		DD Status:		DDF		\$INDEX VALUE					
Calving Ease				Growth and Maternal						Fertility				Carcase				\$GN \$D \$A \$GS															
DIR		DTRS		GL		BWT		200		400		600		MCW		MILK		SS		DC		CWT		RIB		RUMP		EMA		RBY		IMF	
EBVs		6.8	6.2	-4.5	2.5	53	92	121	94	23	2.4	-4.4	71	1.6	1.6	11.5	0.3	4.5															
Acc		81	67	99	99	97	97	94	88	80	95	56	82	83	84	84	78	84	351	254	197	241											

5 SYDGEN ENHANCE																		SIRE SYDGEN EXCEED 3223				MGS SYDGEN LIBERTY GA 8627											
Birth Date:		27/1/15		ASA ID:		USA18170041		ASA Status:		HBR		AM Status:		AMF		NH Status:		NHF		CA Status:		CAF		DD Status:		DDF		\$INDEX VALUE					
Calving Ease				Growth and Maternal						Fertility				Carcase				\$GN \$D \$A \$GS															
DIR		DTRS		GL		BWT		200		400		600		MCW		MILK		SS		DC		CWT		RIB		RUMP		EMA		RBY		IMF	
EBVs		5.0	3.2	-3.2	3.2	59	105	139	109	20	2.9	-3.5	73	-2.5	-1.2	8.4	0.1	3.3															
Acc		96	88	99	99	99	99	99	98	98	99	72	96	95	94	94	92	94	314	231	182	216											

6 GAR RELIANT																		SIRE GAR SURE FIRE				MGS B/R DESTINATION 727-928											
Birth Date:		19/8/16		ASA ID:		USA18669357		ASA Status:		HBR		AM Status:		AMF		NH Status:		NHF		CA Status:		CAF		DD Status:		DDF		\$INDEX VALUE					
Calving Ease				Growth and Maternal						Fertility				Carcase				\$GN \$D \$A \$GS															
DIR		DTRS		GL		BWT		200		400		600		MCW		MILK		SS		DC		CWT		RIB		RUMP		EMA		RBY		IMF	
EBVs		0.2	-4.3	-3.5	4.3	61	108	141	104	22	2.1	-3.9	86	-2.3	-3.8	9.6	0.7	3.3															
Acc		84	73	98	98	97	97	96	92	88	95	60	88	87	86	88	82	88	318	234	187	218											

7 HPCA VERACIOUS																		SIRE MILL BRAE IDENTIFIED 4031				MGS GAR SUNRISE											
Birth Date:		3/2/20		ASA ID:		USA19699322		ASA Status:		HBR		AM Status:		AMF		NH Status:		NHF		CA Status:		CAF		DD Status:		DDF		\$INDEX VALUE					
Calving Ease				Growth and Maternal						Fertility				Carcase				\$GN \$D \$A \$GS															
DIR		DTRS		GL		BWT		200		400		600		MCW		MILK		SS		DC		CWT		RIB		RUMP		EMA		RBY		IMF	
EBVs		4.8	1.6	-1.6	3.4	69	116	149	131	18	0.0	-4.5	88	-1.9	-2.5	14.2	0.3	4.2															
Acc		74	57	98	97	95	96	93	88	80	93	48	84	84	82	85	76	86	385	274	217	257											

ANGUS BREED AVERAGE (2022 DROP CALVES)																				
DIR	DTRS	GL	BWT	200	400	600	MCW	MILK	SS	DC	CWT	RIB	RUMP	EMA	RBY	IMF	\$GN	\$A	\$D	\$GS
1.7	2.8	-4.4	4.0	51	92	119	102	17	2.2	-4.6	67	-0.1	-0.3	6.4	0.5	2.3	265	201	166	185

# REFERENCE SIREs



**MOONGENILLA QUINELLA Q33**

Now one of the top proven bull in Australia and an ideal outcross sire. Moogenilla Quinella Q33 is a good match to our maternal herd, rapid early growth without blowing out cow size, excellent carcass traits and top 1-4% across all major Indexes. Progeny are wide-topped, deep-flanked and impressive conformation and an ideal outcross for most of our clients. The combination of calving ease, +116 for 400D Growth and a modest +81 for Mature Cow Weight (MCW) along with his massive EMA and high marbling potential makes him an ideal choice for WA clients.



**LAWSONS MIRACULOUS Q44**

A game changing sire in terms of calving ease, muscle and feed efficiency! Lawsons Miraculous Q44 is the highest HBR sire in the Angus breed for Eye Muscle Area (EMA) at +20.8 and his progeny are visually wide-topped, stout with impressive performance and feed efficiency. Miraculous was one of the highest feed efficiency tested bulls in Cohort #4, being above average for every metric including Net Feed Intake (NFI) and his progeny have backed up with impressive feed efficiency data. Q44 was the top selling bull in our spring 2020 Sale, purchased by TRT Pastoral in King Island. Semen is marketed through Genetics Australia.



**GAR HOME TOWN**

Well known and accepted by WA clients, Home Town is your next step in our pursuit for multi-trait excellence! Home Town sold for a record US\$475,000 in the GAR 2020 Spring Sale and is marketed through Select Sires and World Wide Sires. Home Town progeny are truly unique for calving ease, early growth, stature, maternal function and elite end-product value. With now over 1,200 progeny recorded in our herd out of 2,221 progeny recorded in Australia, we have enjoyed watching our two year old Home daughters excel in our production system, they are truly magnificent.



**LAWSONS ROCKY 4010**

Lawsons Rocky R4010 was sold for a national record for a yearling bull at that time selling for \$132,000 to Knowla Angus, Gilmandyke Angus, Dunoon Angus, Kelly Angus with semen marketed through Breeder Genetics. Rocky is amongst the best balanced elite carcass bulls in the Angus breed - exceptional growth curve and unmatched marbling and muscle combination makes Rocky one of the most sought after bulls today in the Angus breed.



**SYDGEN ENHANCE**

Sydgen Enhance is most widely used Angus bulls in the US and Australia over the past five years. Enhance offers a well balanced outcross option, superb growth curve and soundness from a well recognised maternal herd in the US. Enhance is also top 1% of the breed for Net Feed Intake (NFI) and will play an important role as we move the bell curve for NFI over the next stage in our breeding program. We have recently purchased the Australian semen rights on New Zealand bred Enhance son, Kakahu S132.



**GAR RELIANT**

Reliant blows you away with his impressive phenotype, powerful design and gentle disposition. Stacked with maternal strength and feed efficiency with Sure Fire, B/R Destination 727-928 and goes back to one of our all time favourites and big time "influencers" GAR Predestined. Adds lots of power and moderate maturity pattern for that much growth.



**HPCA VERACIOUS**

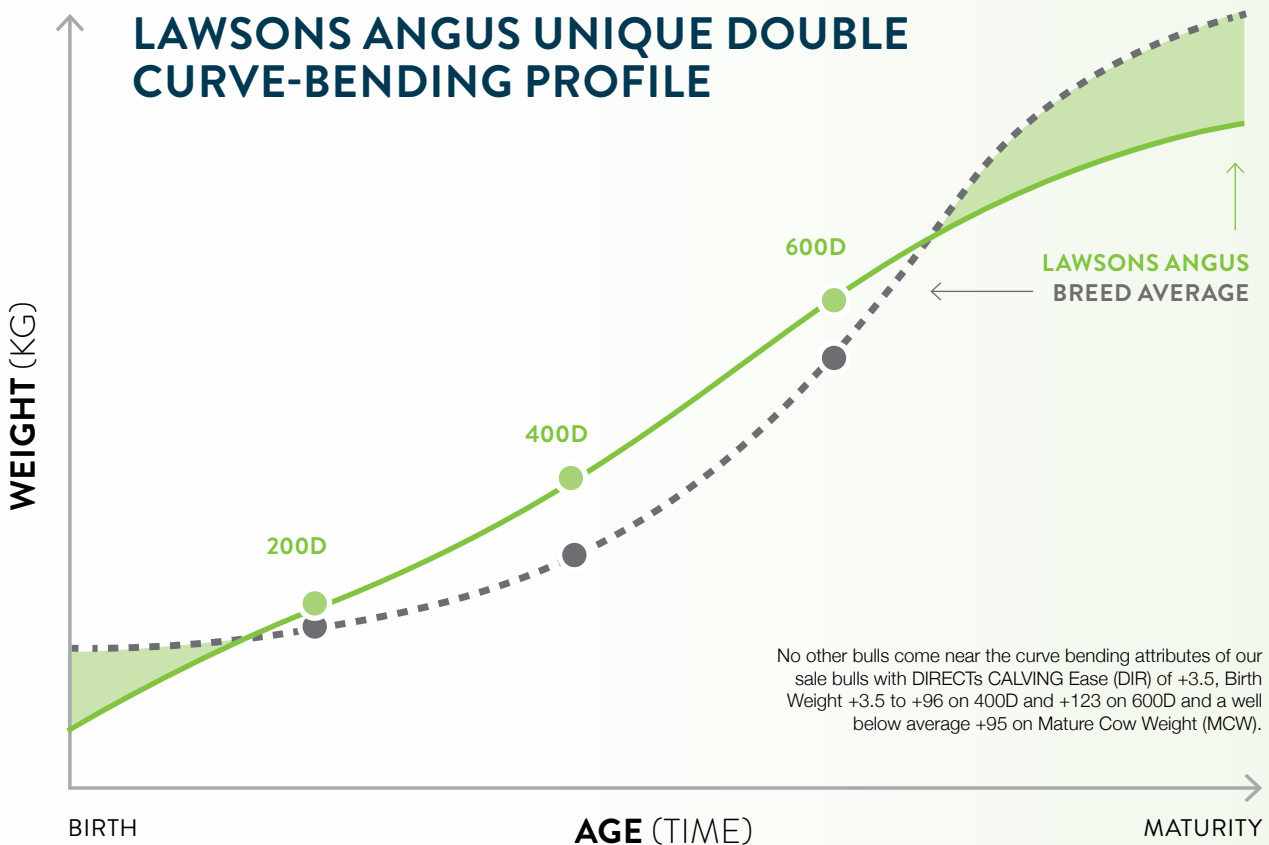
Veracious was the Lot 1 and high-selling bull from well respected Hinkle's Prime Cut Angus. Veracious a good outcross sire by Mill Brae Identified 4031 out of a GAR Sunrise cow who has an impressive story in her own right. Veracious offers sought-after outcross genes for big-time carcass improvement – no other Angus bull touches his trifecta of Carcass Weight (CW), Marbling and Eye Muscle Area (EMA). and REA.

## BULLS THAT SELL

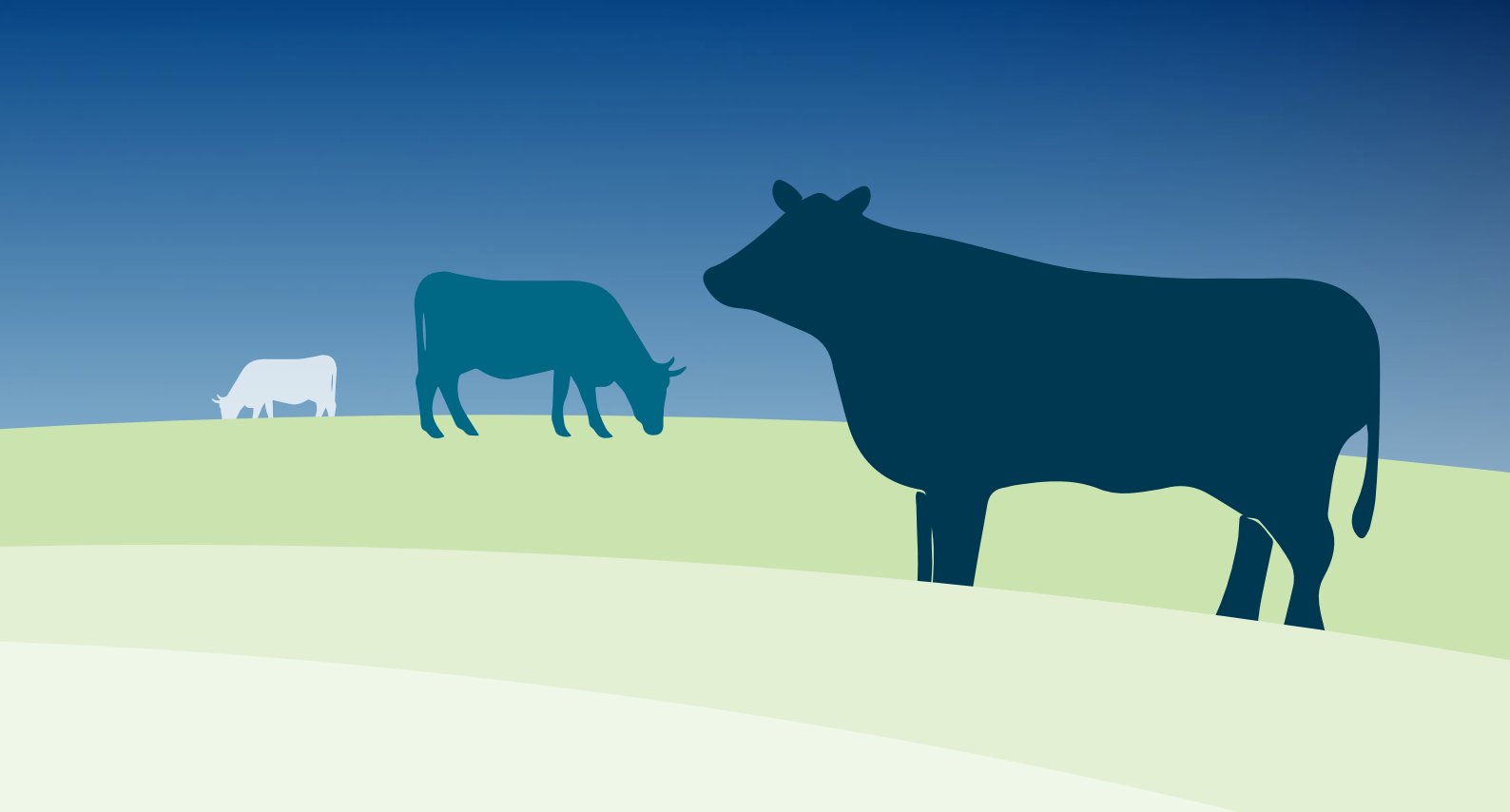
CODE	SIRE	# PROGENY
<b>Q33</b>	MOONGENILLA QUINELLA Q33	7
<b>Q0044</b>	LAWSONS MIRACULOUS Q44	3
<b>HT</b>	GAR HOME TOWN	5
<b>R4010</b>	LAWSONS ROCKY R4010	13
<b>ENH</b>	SYDGEN ENHANCE	8
<b>RL</b>	GAR RELIANT	1
<b>VR</b>	HPCA VERACIOUS	3
<b>TOTAL</b>		<b>40</b>

# NO ONE BENDS IT LIKE A **LAWSONS** **ANGUS BULL**

IN EVERY MATING AT LAWSONS ANGUS THERE IS A FOCUS ON BIRTH WEIGHT (CALVING EASE), GROWTH AND COW SIZE (MCW). OUR BULLS HAVE A MASSIVE GENETIC ADVANTAGE IN THEIR ABILITY TO BEND THE GROWTH CURVE AT BOTH ENDS. NO ONE BENDS THAT CURVE LIKE A LAWSONS ANGUS BULL!







## A LOWER COST, MORE EFFICIENT HERD

Retaining a high proportion of your heifers is a key element to making genetic progress. In order to do this you need to be confident firstly that each year you breed a better 'model' and also that you can confidently calve down a large group of heifers without the stress and economic loss of calving problems (dystocia).

Birth weight is moderately correlated with growth, therefore if we single trait selected for growth we would expect birth weights to increase over time significantly increasing the risk of calving problems associated with higher birth weights. Calving ease is the number one animal welfare trait and as many of our bulls are used over heifers our first priority is always to ensure we provide reliable, predictable information that basically eliminates dystocia.

Around 90% of our bulls are in the optimal zone for calving ease. By weighing calves and submitting data to the global database we find what is referred to as "outliers", which are animals that defy the correlation (i.e. are moderate Birth Weight and still above average or high growth).

## BALANCING GROWTH AND COW SIZE

The Angus breed has become fixated on growth, this has created what we refer to as "cow size creep". As we increase growth we generally see an increase in mature cow size and associated with this is later maturing, later puberty heifers. The challenge for us is then to find the "outliers" that defy the norm and give us the trifecta of calving ease, high growth and moderate mature size/maturity pattern. These animals that defy both antagonisms at either end of the lifetime growth curve are what we call "double curve-benders". The progressive, performance-minded Angus breeders started routinely weighing cows and submitting these weights to Breedplan in the mid-2000's.

We use the information on these key traits from both Australia TACE and the US Angus population. We also continue to contribute to this data by weighing and measuring animals in large contemporary groups in order help identify these true outliers in the breed which excel in our multi-trait criteria.

On-farm productivity and lowering emissions intensity should be our priority for future farming practices. It is possible not to go broke while trying to reduce your carbon footprint! We need to consider the key drivers of both farming profitably and methane emissions.

**The most important and best way to reduce your carbon footprint (as defined by emissions intensity) is to keep your cows moderate and ensure fertility remains your priority.**

Lawsons Angus are one of the only large scale Australian seedstock herds that is below average on Mature Cow Weight (MCW). The reason we place so much emphasis on MCW and on keeping our cows moderate is we believe that MCW is the biggest driver of feed costs, fertility, drought tolerance, post-partum anoestrus period (PPAI) and an animals carbon footprint.

**The Angus breed are the dominant breed for two main reasons, maternal efficiency and eating quality. We need to remain focused on what we do well as a breed and keep marching forward.**

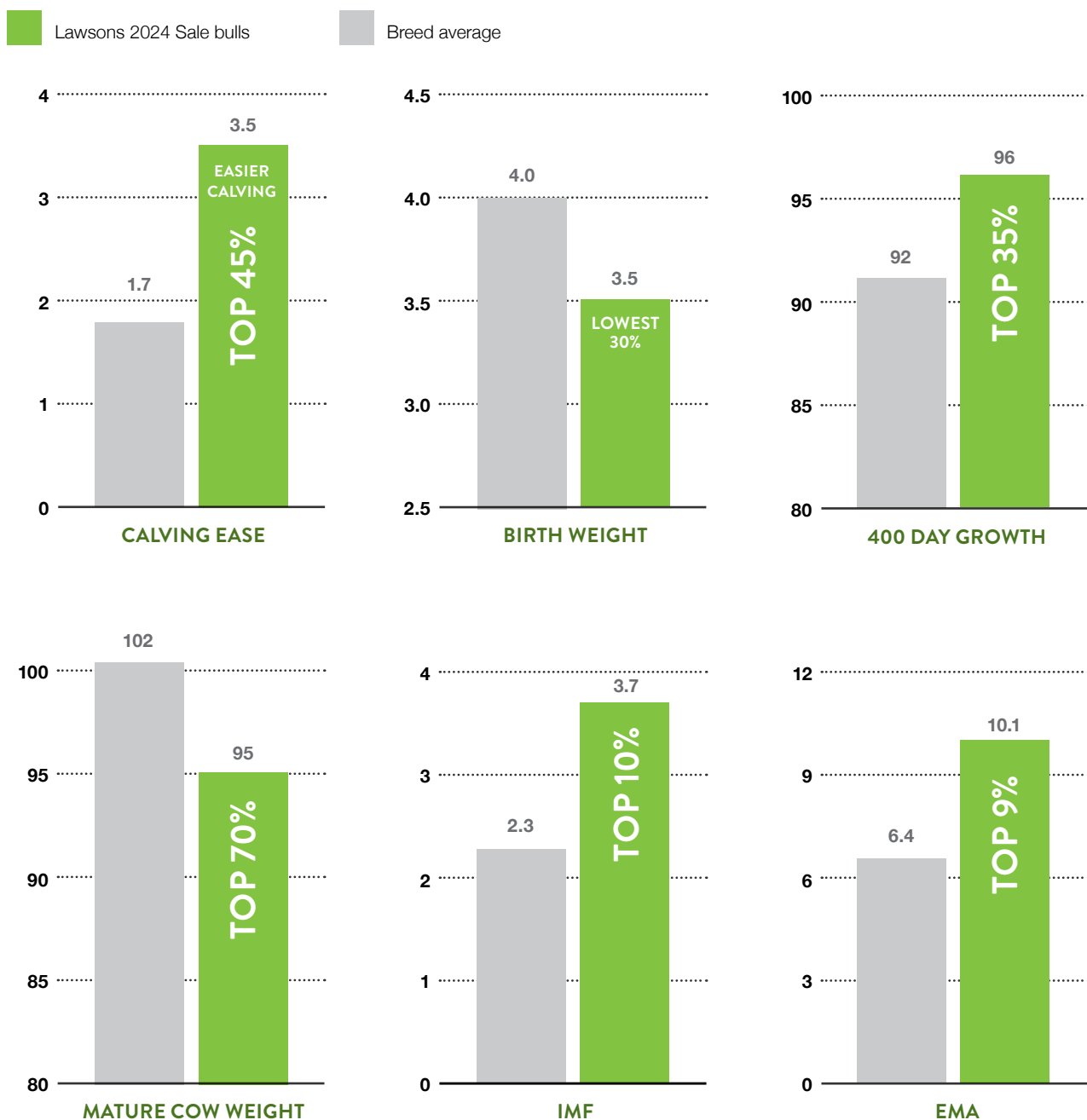


# HOW DO **LAWSONS ANGUS SALE BULLS** COMPARE TO THE ANGUS BREED AVERAGE?

THESE SALE BULLS EXCEL ACROSS ALL KEY ECONOMIC TRAITS. THEY ARE UNIQUE IN THEIR BALANCE OF CALVING EASE, HIGH GROWTH, MODERATE COW SIZE AND UNMATCHED MUSCLE AND HIGH MARBLING POTENTIAL.



# HOW DO LAWSONS ANGUS SALE BULLS COMPARE TO THE ANGUS BREED AVERAGE?



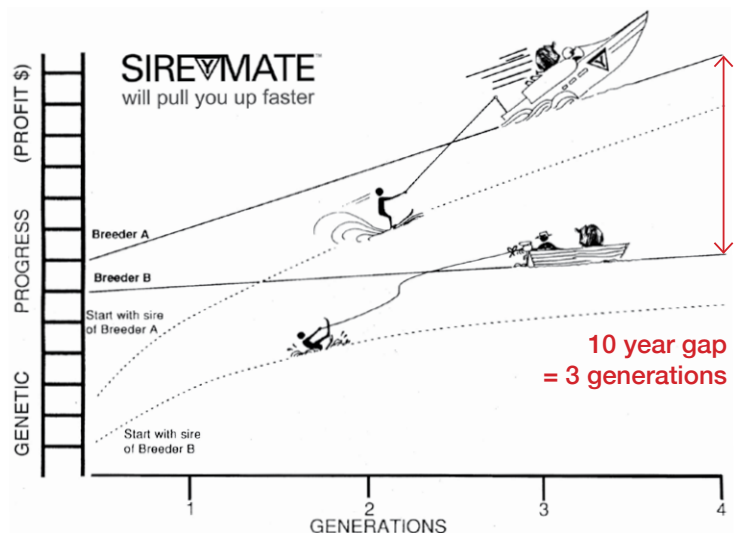
# SIREMATE™ OPTIONS IN PRACTICE

SIRE GROUP A New Design Line	SIRE GROUP B Precision Line	SIRE GROUP C Focus Line	SIRE GROUP D Ambassador Line	SIRE GROUP E Objective Line
GAR Ingenuity B/R New Design 036 Ythanbrae Henry VIII Bon View New Design 1407 GAR Prime Design Ythanbrae New Design 036 U84 Ythanbrae True Blue N33 VDAR New Trend 315 Bon View New Design 208 Perry Power Design 715 GAR Integrity GAR Predestined Lawsons GAR Faidinkum Z197 Rito 2V1 of 2536 1407 TC Total 410 Lawsons Dinky-Di Z191 GAR New Design 5050 Lawsons King Island Beef Z1292 Lawsons Romeo A754 Thomas Grade Up Rito 4L6 of 2536 208 Lawsons Novak E313 Rennylea C511 GAR Progress GAR Momentum GAR Method GAR Transcendent Momentous M518 Lawsons Miraculous Q44 GAR Quantum	GAR Precision 1680 GAR Paramount 8908 GAR Pinnacle 7708 GAR Everest 9409 CA Future Direction GAR Yield Grade Ythanbrae GAR Precision U28 'Calculator' Ythanbrae GAR Precision V527 Lawsons Buckshot X410 Lawsons Tank X1235 Ardrossan Direction X3 GAR US Premium Beef GAR Retail Product Lawsons High Grade Z440 Ardrossan Admiral A2 GAR Right Direction Lawsons Swagman A179 Lawsons Tank B1155 Lawsons Ironstone B1370 Alloura Get Cracking G10	GAR Sure Fire Lawsons NZ09104 GAR Pheonix GAR Reliant GAR Dual Threat Moongenilla Quinella Q33	Tuwharetoa Regent D145 Topbos Ambassador F4 Storth Oaks D21 Paringa Judd J5	SS Objective T510 0T26 GAR Selective GAR Ultimate GAR Efficiency Rito Revolution SS Traveler 6807 T510 GAR Solution Lawsons Invincible C402 HPCA Intensity 7102 GAR Index
Column A daughters sire group can me mated to all other sire groups	Column B daughters sire group can me mated to all other sire groups	Column C daughters sire group can me mated to all other sire groups	Column D daughters sire group can me mated to all other sire groups	Column E daughters sire group can me mated to all other sire groups

## DEVELOP YOUR OWN SIMPLE 10 YEAR PLAN

Using Lawsons Angus genetics will provide a highly predictable path to keeping you a decade ahead of the average Angus breeder.

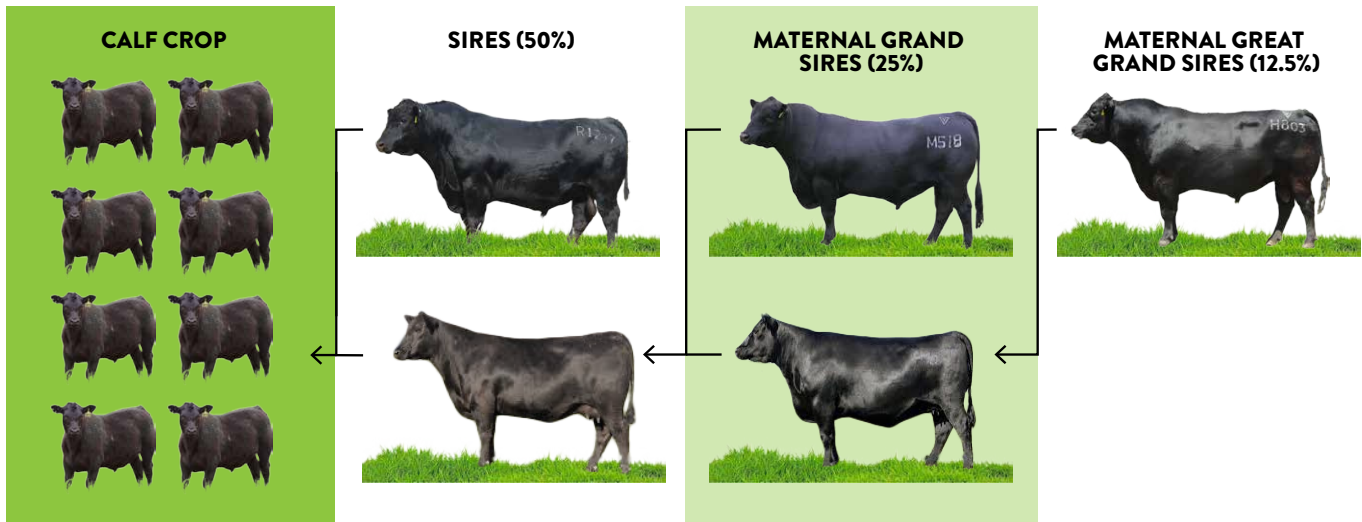
**Lawsons Angus breeding program is built on multiplying the best bulls available in the world. Sire-Mate helps breeders develop a simple, but still flexible mating plan that minimises inbreeding and maximises genetic gain.**





SIRE GROUP F Bartel Line	SIRE GROUP G Prophet Line	SIRE GROUP H Ashland Line	SIRE GROUP I Other Sires
Ayrvale Bartel E7 Ayrvale Bartel E8 Dunoon Evident E614 Lawsons Incredible H803 Lawsons Hugo H653 Lawsons Harvard H205	GAR Prophet GAR Prophecy GAR Relevance	GAR Ashland GAR Home Town SC Abundance 42F	RockN D Ambush 1531 B/R Ambush 28 Lawsons Payload X951 GAR Grid Maker GAR Payload 3674 GAR Evas Convergence 3403 GAR Evas Consistence 3803 GT Sentry Bon View Spectrum 1176 N Bar Prime Time D806 BT Ultravox 297E BCC Bushwacker 41-93 Connealy Lead On Gardens High Mark Tehama Schwarzenegger N600 Ironwood New Level Ythanbrae Pono V346 Wilson Downs Equator V191 Te Mania Africa Lawsons Harry H234 Rennylea Edmund E11 Sydgen Trust 6228 Leachman Resolution GAR-EGL Protege B/R New Day 454 Broken Bow 002 GAR Anticipation GAR Sunrise GAR Genuine HPCA Veracious
Column F daughters sire group can me mated to all other sire groups	Column G daughters sire group can me mated to all other sire groups	Column H daughters sire group can me mated to all other sire groups	Column I daughters sire group can me mated to all other sire groups

**!** 87% OF GENETIC COMPOSITION OF CALF CROP IS DETERMINED BY THE SIRES USED OVER THE LAST 3 GENERATIONS.



# SALE CONDITIONS

## BUYER REBATES FOR OUTSIDE AGENTS

All lots will be sold subject to the usual conditions governing auction sales.

Rebate of 2% is available to outside agents who attend the sale or introduce their client prior to Sale day, and settle on behalf of clients within 7 days. Please email introductions to lawsons@lawsonsangus.com.au and/or the selling agent. If agents are nominated to settle on behalf of clients on Sale day and do not attend 1% rebate will be applied.

## DELIVERY OF SALE BULLS

Lawsons Angus will do our best to assist in the efficient and safe delivery of your bulls. Buyers, please ensure bulls are insured at the fall of the hammer as our insurance does not cover injury of bulls in transit. Please make sure you provide full delivery instructions in writing, including full contact details and maps prior to leaving the Sale. We are offering free Delivery of the Sale Bulls to regional centres in WA. In most cases we will deliver free to the farm address provided. We are also offering free delivery to Yea, Victoria for Eastern States buyers.

## REGISTRATION STATUS AND TRANSFER OF BULLS

Most bulls on offer are Registered Herd Book animals with the Angus Society of Australia (ASA). Registration status of bulls is shown in the catalogue. 'H' indicates the animal is registered in the ASA Herd Book, 'A' indicates bulls are registered with ASA Performance Register (APR). All bulls will be transferred to purchaser at no cost on request.

## 3 YEAR BULL GUARANTEE

All bulls have undergone rigorous and independent assessments for structural soundness and fertility, including a semen test and physical evaluation of the bulls reproductive tract. On top of this we offer the strongest guarantee of any seedstock herd in Australia.

All breeding cattle sold by Lawsons Angus are fertile and structurally sound to the best of our knowledge.

If a bull becomes infertile or breaks down due to reasons other than injury or misadventure, at any time in the next 36 months, we will:

1. provide you with a satisfactory replacement if available
- OR
2. issue you with a credit equal to purchase price minus salvage value, that may be used to purchase any animal in future Lawsons Angus sales.

The Lawsons Angus 3 year bull guarantee is not an insurance policy. Normal care needs to be taken as we cannot replace an animal that is injured or dies for any reason. We recommend you insure animals against injury.

An insurance service will be available on Sale day. This guarantee is in addition to normal terms and conditions governing auction sales, and as such the discretion and final decision as to issuing a credit will be with the vendor. Any credit will be limited to bull purchase price less salvage value and not include any costs, damages or loss of income incurred as a result of claims under this guarantee.

## ANIMAL HEALTH STATUS OF SALE BULLS

2024 WA Sale bulls have been semen tested by Jessica, Shilling, Bovitech Vet, Albany including a crush side and morphology test.

Bulls exposed to reproductive diseases such as Leptospirosis and Vibriosis can have their reproductive performance impaired and spread disease between the females they are servicing. All bulls offered in this Sale have been vaccinated with Ultravac 7 in 1, Vibrovax and Bovilis MH & IBR.

All bulls have been ear notched and tested for pesti virus and have been vaccinated with Pestiguard.

## RETENTION OF SEMEN AND CLONING INTERESTS

This year we have selected several bulls as being of particular interest and merit. These bulls are referred to herein as "nominated bulls" and are identified in the catalogue by a shaded box containing the words "Retaining Semen Marketing Rights and 50% Revenue Sharing Interest". Animals in this sale that are nominated to retain a semen interest in are sold with the following conditions;

- Each animal sold is the physical property of the purchaser. The purchaser is entitled to collect semen for use in their own herd only at any time. The purchaser is entitled to 100% of the salvage value of the bull.
- Lawsons Angus retains the right to access the nominated bulls at a future date for the purpose of semen production with the semen to be used within the Lawsons Angus program. Semen will be collected at the expense of Lawsons Angus and at a negotiated time and place convenient to the new owner and Lawsons Angus.
- Nominated bulls are sold with Lawsons Angus retaining exclusive semen marketing control, and a percentage of all semen royalties is nominated on the individual lot.
- Lawsons Angus may offer any purchaser, being a syndicate, semen company or other, the controlling interest in semen marketing of nominated bulls provided the prospective purchaser nominates their intentions to Lawsons Angus prior to sale, and at that time negotiate ongoing marketing/royalty terms acceptable to Lawsons Angus.

- If a bull is re-sold by a purchaser, Lawsons Angus retained interests persist with the new owner.
- Lawsons Angus retains exclusive cloning rights on all animals sold.
- No animal may be cloned without written consent from Lawsons Angus.

**RETAINING SEMEN INTERESTS IN SALE BULLS ENABLES LAWSONS ANGUS TO OFFER ACCESS TO OUR BEST BULLS AND ENABLES THE BULL OWNER TO JOINTLY SHARE IN ANY FUTURE SUCCESS IN MARKETING SEMEN.**

**RETAINING SEMEN**

Retaining a semen interest provides Lawsons Angus with the option to collect semen for our own use, but also to control the potential marketing of semen to the best effect through our network of contacts. Very few bulls ever sell a lot of semen, and in most cases it is later in life after progeny have proven the merit of the bull.

As we put a great deal of resources and intellect into developing each bull, and in some cases into sampling young bulls through AAA and cooperator programs, it is reasonable to participate in their future success in the form of semen

sales and use in our own program so we can ensure we continue our program's genetic progress. With these points understood by our customers, we can offer for sale every bull we produce, and hold nothing back. It is important to note most seedstock herds retain their best bulls as stud sires, however the system we operate gives our clients direct access to our best bulls.

**INSURANCE DISCLAIMER**

Insurance risk of stud animals sold at auction transfers to the purchaser at the fall of the hammer, including animals remaining on the vendor's property.

Purchasers therefore are advised to insure their animals at the completion of the sale. Stud Animals are not covered by commercial livestock insurance.

**CALVING EASE** ✓

We have included a red tick for bulls that are recommended for use over yearling heifers next to the Calving Ease heading in EBV section. Calving ease bull specifications are primarily set at  $\geq 1.0$  for Direct Calving Ease and  $\leq 4.2$  Birth Weight. Individual herds may successfully use bulls outside of this recommended range depending on their herd and production system but these are our recommended "safe" heifer specifications. We also recommend you talk to us about helping develop a pre-calving heifer management plan that can be used in conjunction with these EBV specifications to achieve optimal calving and rebreeding for two year old heifers.



# 2024 ALBANY YEARLING SALE BULLS

## GROUP BREEDPLAN EBVs

Lot #	Tag No	Comments	Pen	Sire	Dam	MGS	Birth Date	Mob	50k	ASA Status	AM Status	NH Status	CA Status	DD Status
1	U1513		1	Q33	L0096	H0803	25/4/23	UWABS2		HBR	AM1%	NH11%	CAFU	DD11%
2	U1521		1	Q33	Q1602	MM	27/4/23	UWABS2		HBR	AMFU	NHFU	CAFU	DD25%
3	U1525		1	Q33	Q1627	PROP	29/4/23	UWABS2		HBR	AMFU	NHFU	CAFU	DD5%
4	U1539		1	Q33	S1599	RL	25/4/23	UWABS2		HBR	AMFU	NHFU	CAFU	DDFU
5	U1620		1	Q33	P0191	MM	9/4/23	UWABS2		HBR	AM1%	NHFU	CAFU	DD1%
6	U1626		1	Q33	P0186	G10	23/3/23	UWABS2		HBR	AMFU	NHFU	CAFU	DDFU
7	U1636		1	Q33	P0244	J5	12/3/23	UWABS2	Y	HBR	AM7%	NHFU	CAFU	DD2%
8	U1639		2	Q0044	P0275	SUN	24/2/23	UWABS2		HBR	AM12%	NHFU	CAFU	DD14%
9	U1640		2	Q0044	P0276	L0098	17/2/23	UWABS2		HBR	AMFU	NHFU	CAFU	DD5%
10	U1663		2	Q0044	R1608	MON	21/3/23	UWABS2		HBR	AMFU	NHFU	CAFU	DD5%
11	U1511		3	HT	L0052	ING	7/5/23	UWABS2		HBR	AMFU	NHFU	CAFU	DD78%
12	U1569		3	HT	S1625	RL	21/5/23	UWABS2		HBR	AMFU	NHFU	CAFU	DD12%
13	U1619		3	HT	P0152	SUN	9/3/23	UWABS2	Y	HBR	AMFU	NHFU	CAFU	DDFU
14	U1645		3	HT	Q1767	H0803	9/3/23	UWABS2	Y	HBR	AMFU	NHFU	CAFU	DDFU
15	U1667		3	HT	S1503	IDX	12/3/23	UWABS2		HBR	AMFU	NHFU	CAFU	DD3%
16	U1542		4	R4010	S1630	EMP	25/4/23	UWABS2		HBR	AMFU	NHFU	CAFU	DD2%
17	U1546		4	R4010	S1636	EMP	18/4/23	UWABS2		HBR	AMFU	NHFU	CAFU	DD25%
18	U1549		4	R4010	S1642	EMP	25/4/23	UWABS2		HBR	AMFU	NHFU	CAFU	DDFU
19	U1551		4	R4010	S1644	EMP	16/4/23	UWABS2		HBR	AMFU	NHFU	CAFU	DDFU
20	U1552		4	R4010	S1645	EMP	21/4/23	UWABS2		HBR	AMFU	NH5%	CAFU	DD5%
21	U1562		4	R4010	R1596	MON	20/5/23	UWABS2		HBR	AMFU	NHFU	CAFU	DD3%
22	U1601		4	R4010	J1429	E614	7/4/23	UWABS2		HBR	AM25%	NHFU	CAFU	DD25%
23	U1628		4	R4010	P0206	L0483	20/3/23	UWABS2		HBR	AM8%	NH5%	CAFU	DD5%
24	U1632		4	R4010	P0230	L0483	19/3/23	UWABS2		HBR	AMFU	NH1%	CAFU	DD1%
25	U1650		4	R4010	R1510	ASH	17/3/23	UWABS2		HBR	AMFU	NHFU	CAFU	DD19%
26	U1660		4	R4010	R1548	MON	17/3/23	UWABS2		HBR	AMFU	NHFU	CAFU	DD6%
27	U1656		4	R4010	R1534	ASH	19/3/23	UWABS2		HBR	AMFU	NHFU	CAFU	DDFU
28	U1664		4	R4010	R1610	MON	13/4/23	UWABS2		HBR	AM6%	NHFU	CAFU	DDD7%
29	U1610		5	ENH	P0112	PROP	13/3/23	UWABS2		HBR	AM5%	NH5%	CAFU	DDFU
30	U1613		5	ENH	P0127	PROP	24/3/23	UWABS2		HBR	AMFU	NHFU	CAFU	DDFU
31	U1621		5	ENH	P0153	G10	14/3/23	UWABS2		HBR	AM4%	NHFU	CAFU	DDFU
32	U1625		5	ENH	P0177	PROP	21/3/23	UWABS2		HBR	AMFU	NHFU	CAFU	DD5%
33	U1627		5	ENH	P0201	G10	17/3/23	UWABS2		HBR	AMFU	NHFU	CAFU	DD11%
34	U1642		5	ENH	Q1759	M0518	19/3/23	UWABS2		HBR	AMFU	NHFU	CAFU	DD25%
35	U1646		5	ENH	Q1769	M0518	12/3/23	UWABS2		HBR	AMFU	NHFU	CAFU	DD25%
36	U1673		5	ENH	S1514	RL	23/3/23	UWABS2		HBR	AMFU	NHFU	CAFU	DD13%
37	U1512		6	RL	L0060	E7	26/4/23	UWABS2		HBR	AMFU	NHFU	CAFU	DDFU
38	U1617		6	VR	P0142	MM	22/3/23	UWABS2		HBR	AMFU	NHFU	CAFU	DDFU
39	U1624		6	VR	P0170	G10	21/3/23	UWABS2	Y	APR	AMFU	NHFU	CAFU	DD3%
40	U1654		6	VR	R1526	MON	21/3/23	UWABS2	Y	APR	AMFU	NHFU	CAFU	DD7%

Lawsons Angus 2024 WA Helmsman Sale Bull Average

Angus Breed Average



	CALVING EASE				GROWTH & MATERNAL					FERTILITY		CARCASE					\$INDEX VALUE				
CE TICK	DIR	DTRS	GL	BWT	200	400	600	MCW	MILK	SS	DC	CWT	RIB	RUMP	EMA	RBY	IMF	\$GN	\$A	\$D	\$GS
✓	1.6	7.5	-4.2	4.2	55	100	127	74	24	2.4	-3.6	81	-2.0	-1.8	10.5	0.5	4.4	352	257	205	243
✓	0.2	6.0	-3.4	4.3	53	101	127	85	21	1.8	-1.7	79	-1.7	-1.4	12.3	0.7	4.2	325	232	184	217
✓	-0.5	6.3	-1.6	3.4	56	103	127	80	24	1.6	-2.6	79	-1.9	-1.8	8.5	0.1	4.7	337	237	188	220
	0.1	5.0	-3.4	4.8	59	112	145	100	23	2.8	-3.2	90	-1.9	-1.7	10.1	0.5	3.9	339	250	201	237
✓	3.2	7.7	-5.2	3.5	55	105	134	92	25	1.9	-2.3	84	-1.6	-1.0	10.9	0.4	4.1	337	243	192	228
✓	2.3	6.3	-1.3	3.9	52	101	129	97	21	1.8	-4.2	83	-1.3	-1.3	11.2	0.7	4.4	336	249	202	236
✓	6.1	8.2	-6.7	2.4	50	98	123	76	23	2.3	-4.8	83	0.8	1.9	8.8	-0.1	4.3	354	260	211	248
✓	1.4	-1.9	-1.8	4.1	48	88	111	103	13	1.9	-4.7	54	-1.1	-0.7	13.3	1.4	2.3	276	211	177	195
✓	5.1	1.6	-7.0	3.5	48	88	112	98	15	2.7	-4.7	53	-0.8	-0.6	14.0	1.5	2.5	297	229	191	214
✓	3.9	-0.3	-3.1	3.2	46	87	107	91	15	3.4	-5.3	51	-0.6	-0.4	15.8	1.6	2.6	302	233	198	219
	-3.7	-4.7	2.5	5.2	57	101	126	108	14	1.3	-5.4	75	-2.8	-4.7	9.5	1.1	3.7	300	226	189	208
✓	0.2	-1.9	-1.4	3.7	55	97	117	84	16	1.2	-4.4	70	-2.5	-3.7	13.1	1.1	4.3	339	248	205	230
✓	6.8	4.2	-7.0	1.7	54	96	113	76	16	0.9	-6.2	69	-1.8	-2.5	10.9	0.7	3.9	362	271	231	253
✓	6.1	4.8	-6.4	1.9	49	88	104	64	17	1.2	-6.5	65	-1.5	-2.0	11.3	0.8	4.1	353	267	226	251
✓	4.5	1.6	-7.4	3.6	54	95	118	92	14	0.6	-5.5	67	-0.7	-2.0	10.3	0.7	3.8	335	251	209	234
✓	3.8	4.2	-3.1	4.5	55	98	131	111	20	2.4	-4.6	76	-0.1	-1.0	8.6	0.6	3.4	310	234	187	220
✓	6.4	7.1	-6.7	2.4	50	88	111	87	20	2.2	-5.3	62	1.6	1.3	8.2	0.2	3.5	319	237	193	221
✓	3.7	4.7	-3.1	3.7	51	91	118	102	19	2.1	-4.9	66	0.7	0.1	8.2	0.6	3.3	300	226	184	210
✓	6.8	7.1	-7.7	2.7	53	93	120	92	19	2.3	-5.1	69	1.7	1.3	8.0	0.0	3.6	327	243	196	228
✓	5.2	5.7	-5.5	3.1	51	89	115	89	20	2.1	-4.5	64	0.5	-0.4	9.8	0.5	3.8	319	236	188	220
✓	4.7	3.8	-1.9	3.5	51	92	121	103	20	3.0	-5.4	67	-0.5	-1.1	10.5	0.6	4.0	313	236	190	224
✓	0.8		-2.0	3.9	49	86	112	98	17	2.2	-5.3	62	-0.4	0.1	9.5	1.0	2.8	283	212	173	198
✓	5.6	2.3	-3.1	2.6	52	95	121	92	23	2.7	-5.0	76	0.5	1.5	10.2	0.4	3.4	330	245	198	230
✓	7.1	5.1	-2.9	1.8	47	86	114	87	24	2.5	-5.0	69	0.7	1.7	9.9	0.5	3.4	313	234	185	220
✓	4.0	4.4	-4.9	4.2	59	103	135	121	18	1.8	-4.4	76	-0.4	-0.9	11.4	0.7	3.6	334	248	199	232
✓	5.9	5.9	-4.5	4.1	52	92	121	100	19	2.7	-6.0	67	-0.2	-0.8	11.7	0.7	4.0	335	254	205	242
✓	2.9	3.6	-3.6	3.6	59	102	130	103	21	1.7	-4.0	76	0.2	0.6	10.6	0.2	3.9	348	250	198	234
✓	5.5		-2.5	3.1	51	91	118	94	20	2.7	-5.9	66	-0.2	-0.2	10.4	0.6	3.5	319	241	197	229
✓	5.3	4.9	-2.3	2.5	58	100	130	96	22	2.2	-4.8	71	-1.3	-0.5	6.4	0.0	3.6	332	245	197	229
✓	2.9	2.8	-0.3	3.0	56	97	126	94	20	1.9	-4.2	68	-1.7	-1.2	5.7	-0.2	4.1	312	226	178	209
✓	6.1	5.8	-3.9	2.3	52	89	114	84	16	1.4	-4.9	60	-1.0	-0.7	9.4	0.2	4.2	331	243	194	227
✓	3.9	2.5	-2.6	3.7	59	99	131	102	18	1.9	-4.4	73	-1.2	-0.6	5.3	-0.3	3.8	315	230	180	213
✓	5.7	4.5	-3.0	3.5	59	103	134	114	20	2.2	-5.5	77	-1.3	-0.9	9.6	0.5	3.7	346	259	210	244
✓	2.4	3.0	-3.5	4.3	57	99	131	112	19	2.7	-3.6	65	-2.4	-1.6	8.9	0.3	3.5	298	218	171	202
✓	5.2	4.7	-6.9	2.7	54	96	124	94	21	2.7	-3.8	62	-1.7	-0.8	8.1	-0.1	3.9	310	225	178	209
	-2.2	-1.2	-3.4	4.8	61	105	136	102	20	2.7	-3.9	75	-2.2	-1.7	8.2	0.1	3.7	312	226	179	210
✓	1.1	1.0	-2.4	4.2	54	94	125	92	21	1.9	-5.3	73	-1.6	-2.0	8.8	0.9	3.3	315	239	192	224
✓	3.7	3.2	-0.9	2.1	57	99	124	96	19	0.3	-2.9	73	-1.0	-1.2	11.3	0.3	4.2	339	238	188	219
✓	3.0	1.8	-2.7	4.6	60	101	127	106	17	0.1	-4.9	74	-1.4	-2.0	13.7	0.7	4.3	364	264	213	247
✓	4.5	3.9	-1.9	3.9	58	99	126	101	16	1.5	-6.1	72	-1.4	-2.0	12.6	0.6	4.0	358	268	219	253
	3.2	2.1	-5.0	3.2	53	95	117	92	21	2.1	-4.5	68	-0.8	-1.2	10.4	1.1	3.5	337	245	200	232
	2.1	2.5	-4.7	4.1	49	89	116	100	17	2.1	-4.6	66	0.0	-0.4	6.1	0.5	2.1	254	193	159	177

# YEARLING BULLS

## ▽ 1 LAWSONS QUINELLA U1513 AI

Birth Date: 25/4/23 AM: AM1% NH: NH11% CA: CAFU DD: DD11%  
 Society ID: VLY23U1513 ASA: HBR 50k: Mob: UWABS2 JBAS J-Bas 6  
 GAR FAIL SAFE  
 Sire: MOONGENILLA QUINELLA Q33 MOOGENILLA N9  
 CONNEALY IN SURE 8524  
 GAR PROGRESS 830  
 EF COMPLEMENT 8088  
 EAGLEHAWK JEDDA 248  
 GAR MOMENTUM  
 Dam: LAWSONS INCREDIBLE L96 LAWSONS PROGRESS G377  
 AYRVALE BARTEL E7  
 LAWSONS DINKY DI E447  
 GAR PROGRESS  
 LAWSONS IRONSTONE E230

June 2023 Trans Tasman Angus Cattle Evaluation

		Calving Ease ✓			Growth and Maternal					
		DIR	DTRS	GL	BWT	200	400	600	MCW	MILK
EBVs		1.6	7.5	-4.2	4.2	55	100	127	74	24
Acc		60	49	83	73	71	69	69	68	61
		Fertility				Carcase				
		SS	DC	CWT	RIB	RUMP	EMA	RBV	IMF	
EBVs		2.4	-3.6	81	-2.0	-1.8	10.5	0.5	4.4	
Acc		66	39	60	62	62	61	57	64	
		\$GN	352	\$A	257	\$D	205	\$GS	243	

U1513 is the equal #2 IMF bull in the Sale and is the #6 ranked Heavy Grain Index (\$GN) bull in the Sale, top 2% of the breed, top 10% for Domestic Index (\$D) and IMF.



## ▽ 2 LAWSONS QUINELLA U1521 AI

Birth Date: 27/4/23 AM: AMFU NH: NHFU CA: CAFU DD: DD25%  
 Society ID: VLY23U1521 ASA: HBR 50k: Mob: UWABS2 JBAS J-Bas 6  
 GAR FAIL SAFE  
 Sire: MOONGENILLA QUINELLA Q33 MOOGENILLA N9  
 CONNEALY IN SURE 8524  
 GAR PROGRESS 830  
 EF COMPLEMENT 8088  
 EAGLEHAWK JEDDA 248  
 GAR MOMENTUM  
 Dam: LAWSONS MOMENTUM Q1602 LAWSONS INGENUITY K192  
 GAR PROGRESS  
 GAR BIG EYE 1770  
 GAR INGENUITY  
 LAWSONS STOROTH OAKS H12

June 2023 Trans Tasman Angus Cattle Evaluation

		Calving Ease ✓			Growth and Maternal					
		DIR	DTRS	GL	BWT	200	400	600	MCW	MILK
EBVs		0.2	6.0	-3.4	4.3	53	101	127	85	21
Acc		61	50	84	73	71	69	69	68	60
		Fertility				Carcase				
		SS	DC	CWT	RIB	RUMP	EMA	RBV	IMF	
EBVs		1.8	-1.7	79	-1.7	-1.4	12.3	0.7	4.2	
Acc		67	40	61	63	63	62	57	64	
		\$GN	325	\$A	232	\$D	184	\$GS	217	

U1521 ranks in the top 10% of the breed for Heavy Grain Index (\$GN). U1569 is one of the highest EMA bulls in the Sale, top 2% of the breed. U1521 is one of the highest EMA bulls in the Sale, top 5% of the breed.



## ▽ 3 LAWSONS QUINELLA U1525 AI

Birth Date: 29/4/23 AM: AMFU NH: NHFU CA: CAFU DD: DD5%  
 Society ID: VLY23U1525 ASA: HBR 50k: Mob: UWABS2 JBAS J-Bas 6  
 GAR FAIL SAFE  
 Sire: MOONGENILLA QUINELLA Q33 MOOGENILLA N9  
 CONNEALY IN SURE 8524  
 GAR PROGRESS 830  
 EF COMPLEMENT 8088  
 EAGLEHAWK JEDDA 248  
 GAR PROPHET  
 Dam: LAWSONS PROPHET Q1627 LAWSONS NOVAK L29  
 C R A BEXTOR 872 5205 608  
 GAR OBJECTIVE 1885  
 LAWSONS NOVAK E313  
 LAWSONS PROGRESS G238

June 2023 Trans Tasman Angus Cattle Evaluation

		Calving Ease ✓			Growth and Maternal					
		DIR	DTRS	GL	BWT	200	400	600	MCW	MILK
EBVs		-0.5	6.3	-1.6	3.4	56	103	127	80	24
Acc		61	52	83	73	71	69	70	68	60
		Fertility				Carcase				
		SS	DC	CWT	RIB	RUMP	EMA	RBV	IMF	
EBVs		1.6	-2.6	79	-1.9	-1.8	8.5	0.1	4.7	
Acc		67	42	61	63	63	62	58	65	
		\$GN	337	\$A	237	\$D	188	\$GS	220	

U1525 is the highest IMF bull in the Sale, top 6% of the breed and ranks in the top 10% for Heavy Grain Index (\$GN).



**4 LAWSONS QUINELLA U1539 AI**

Birth Date: 25/4/23 AM: AMFU NH: NHFU CA: CAFU DD: DDFU  
 Society ID: VLY23U1539 ASA: HBR 50k: Mob: UWABS2 JBAS J-Bas 6  
 GAR FAIL SAFE CONNEALY IN SURE 8524  
 Sire: MOONGENILLA QUINELLA Q33 GAR PROGRESS 830  
 MOOGENILLA N9 EF COMPLEMENT 8088  
 EAGLEHAWK JEDDA Z48  
 GAR RELIANT  
 Dam: LAWSONS RELIANT S1599 GAR DESTINATION N244  
 LAWSONS MOMENTOUS Q1624 LAWSONS MOMENTOUS M518  
 LAWSONS INCREDIBLE L18

June 2023 Trans Tasman Angus Cattle Evaluation									
Calving Ease					Growth and Maternal				
	DIR	DTRS	GL	BWT	200	400	600	MCW	MILK
EBVs	0.1	5.0	-3.4	4.8	59	112	145	100	23
Acc	59	49	83	69	71	69	69	66	59
Fertility				Carcase					
	SS	DC	CWT	RIB	RUMP	EMA	RBV	IMF	
EBVs	2.8	-3.2	90	-1.9	-1.7	10.1	0.5	3.9	
Acc	66	38	60	62	62	61	56	64	
	\$GN	339	\$A	250	\$D	201	\$GS	237	



Massive growth here in this Quinella son and still a very moderate maturity pattern. Out of a two year old Reliant daughter so great outcross for most, U1539 is the highest 400D and 600D Growth bull in the Sale, top 6% of the breed and ranks in the top 10% of the breed for Heavy Grain Index (\$GN).

**5 LAWSONS QUINELLA U1620 AI**

Birth Date: 9/4/23 AM: AM1% NH: NHFU CA: CAFU DD: DD1%  
 Society ID: VLY23U1620 ASA: HBR 50k: Mob: UWABS2 JBAS J-Bas 6  
 GAR FAIL SAFE CONNEALY IN SURE 8524  
 Sire: MOONGENILLA QUINELLA Q33 GAR PROGRESS 830  
 MOOGENILLA N9 EF COMPLEMENT 8088  
 EAGLEHAWK JEDDA Z48  
 GAR MOMENTUM  
 Dam: LAWSONS MOMENTUM P191 GAR PROGRESS  
 LAWSONS INCREDIBLE L30 GAR BIG EYE 1770  
 LAWSONS INCREDIBLE H803  
 LAWSONS SOLUTION D203

June 2023 Trans Tasman Angus Cattle Evaluation									
Calving Ease ✓					Growth and Maternal				
	DIR	DTRS	GL	BWT	200	400	600	MCW	MILK
EBVs	3.2	7.7	-5.2	3.5	55	105	134	92	25
Acc	61	50	84	73	71	69	69	68	60
Fertility				Carcase					
	SS	DC	CWT	RIB	RUMP	EMA	RBV	IMF	
EBVs	1.9	-2.3	84	-1.6	-1.0	10.9	0.4	4.1	
Acc	66	39	60	62	62	61	57	64	
	\$GN	337	\$A	243	\$D	192	\$GS	228	



Massive double curve-bender, very high growth and still calving ease and moderate maturity pattern. U1620 ranks in the top 10% of the breed for Heavy Grain Index (\$GN) and EMA.

**6 LAWSONS QUINELLA U1626 AI**

Birth Date: 23/3/23 AM: AMFU NH: NHFU CA: CAFU DD: DDFU  
 Society ID: VLY23U1626 ASA: HBR 50k: Mob: UWABS2 JBAS J-Bas 6  
 GAR FAIL SAFE CONNEALY IN SURE 8524  
 Sire: MOONGENILLA QUINELLA Q33 GAR PROGRESS 830  
 MOOGENILLA N9 EF COMPLEMENT 8088  
 EAGLEHAWK JEDDA Z48  
 ALLOURA GET CRACKING G10 TE MANIA BERKLEY B1  
 Dam: LAWSONS GET CRACKING P186 ALLOURA JEDDA Z15  
 LAWSONS REGENT K205 TUWHARETOA REGENT D145  
 LAWSONS NEW DESIGN 5050 F451

June 2023 Trans Tasman Angus Cattle Evaluation									
Calving Ease ✓					Growth and Maternal				
	DIR	DTRS	GL	BWT	200	400	600	MCW	MILK
EBVs	2.3	6.3	-1.3	3.9	52	101	129	97	21
Acc	60	49	83	73	70	68	68	67	60
Fertility				Carcase					
	SS	DC	CWT	RIB	RUMP	EMA	RBV	IMF	
EBVs	1.8	-4.2	83	-1.3	-1.3	11.2	0.7	4.4	
Acc	65	39	60	62	62	61	56	64	
	\$GN	336	\$A	249	\$D	202	\$GS	236	



U1626 is the equal #2 IMF bull in the Sale, ranks in the top 10% of the breed for Heavy Grain Index (\$GN), IMF and EMA.

**7 LAWSONS QUINELLA U1636 AI**

Birth Date: 12/3/23 AM: AM7% NH: NHFU CA: CAFU DD: DD2%  
 Society ID: VLY23U1636 ASA: HBR 50k: Y Mob: UWABS2 JBAS J-Bas 6  
 GAR FAIL SAFE CONNEALY IN SURE 8524  
 Sire: MOONGENILLA QUINELLA Q33 GAR PROGRESS 830  
 MOOGENILLA N9 EF COMPLEMENT 8088  
 EAGLEHAWK JEDDA Z48  
 PARINGA JUDD J5  
 Dam: LAWSONS JUDD P244 STRATHWEN BERKLEY WILPENA F30  
 LAWSONS BARTEL E7 L27 AYRVALE BARTEL E7  
 LAWSONS PREDESTINED E642

June 2023 Trans Tasman Angus Cattle Evaluation

Calving Ease		Growth and Maternal								
		DIR	DTRS	GL	BWT	200	400	600	MCW	MILK
EBVs	<b>6.1</b>	<b>8.2</b>	<b>-6.7</b>	<b>2.4</b>	<b>50</b>	<b>98</b>	<b>123</b>	<b>76</b>	<b>23</b>	
Acc	60	50	83	73	70	69	68	67	60	

Fertility		Carcase							
		SS	DC	CWT	RIB	RUMP	EMA	RBV	IMF
EBVs	<b>2.3</b>	<b>-4.8</b>	<b>83</b>	<b>0.8</b>	<b>1.9</b>	<b>8.8</b>	<b>-0.1</b>	<b>4.3</b>	
Acc	66	40	60	62	62	61	56	64	

	<b>\$GN</b>	<b>354</b>	<b>\$A</b>	<b>260</b>	<b>\$D</b>	<b>211</b>	<b>\$GS</b>	<b>248</b>
--	-------------	------------	------------	------------	------------	------------	-------------	------------



U1636 is the #4 ranked Heavy Grain Index (\$GN) bull in the Sale, top 2% of the breed and the #5 ranked for Domestic Index (\$D), top 6% of the breed plus top 10% for IMF.

**8 LAWSONS MIRACULOUS U1639 AI**

Birth Date: 24/2/23 AM: AM12% NH: NHFU CA: CAFU DD: DD14%  
 Society ID: VLY23U1639 ASA: HBR 50k: Mob: UWABS2 JBAS J-Bas 6  
 LAWSONS MOMENTOUS M518 GAR MOMENTUM  
 Sire: LAWSONS MIRACULOUS Q44 LAWSONS AFRICA H229  
 LAWSONS ANTICIPATION K914 GAR ANTICIPATION 7261  
 EAGLEHAWK JEDDA Z48  
 GAR SUNRISE MCC DAYBREAK  
 Dam: LAWSONS SUNRISE P275 GAR OBJECTIVE R227  
 LAWSONS EVIDENT J1429 DUNOON EVIDENT E614  
 LAWSONS EQUATOR E1162

June 2023 Trans Tasman Angus Cattle Evaluation

Calving Ease		Growth and Maternal								
		DIR	DTRS	GL	BWT	200	400	600	MCW	MILK
EBVs	<b>1.4</b>	<b>-1.9</b>	<b>-1.8</b>	<b>4.1</b>	<b>48</b>	<b>88</b>	<b>111</b>	<b>103</b>	<b>13</b>	
Acc	56	47	83	72	69	67	67	66	58	

Fertility		Carcase							
		SS	DC	CWT	RIB	RUMP	EMA	RBV	IMF
EBVs	<b>1.9</b>	<b>-4.7</b>	<b>54</b>	<b>-1.1</b>	<b>-0.7</b>	<b>13.3</b>	<b>1.4</b>	<b>2.3</b>	
Acc	63	37	59	60	60	59	54	62	

	<b>\$GN</b>	<b>276</b>	<b>\$A</b>	<b>211</b>	<b>\$D</b>	<b>177</b>	<b>\$GS</b>	<b>195</b>
--	-------------	------------	------------	------------	------------	------------	-------------	------------



These Miraculous sons excel in muscle and feed efficiency and breed very efficient, moderate daughters. U1639 is one of the highest EMA bulls in the Sale, top 3% of the breed.

**9 LAWSONS MIRACULOUS U1640 AI**

Birth Date: 17/2/23 AM: AMFU NH: NHFU CA: CAFU DD: DD5%  
 Society ID: VLY23U1640 ASA: HBR 50k: Mob: UWABS2 JBAS J-Bas 6  
 LAWSONS MOMENTOUS M518 GAR MOMENTUM  
 Sire: LAWSONS MIRACULOUS Q44 LAWSONS AFRICA H229  
 LAWSONS ANTICIPATION K914 GAR ANTICIPATION 7261  
 EAGLEHAWK JEDDA Z48  
 LAWSONS BARTEL E7 L98 AYRVALE BARTEL E7  
 Dam: LAWSONS BARTEL E7 L98 P276 LAWSONS DINKY DI E447  
 LAWSONS EVIDENT J1432 DUNOON EVIDENT E614  
 LAWSONS PONO V346 E1181

June 2023 Trans Tasman Angus Cattle Evaluation

Calving Ease		Growth and Maternal								
		DIR	DTRS	GL	BWT	200	400	600	MCW	MILK
EBVs	<b>5.1</b>	<b>1.6</b>	<b>-7.0</b>	<b>3.5</b>	<b>48</b>	<b>88</b>	<b>112</b>	<b>98</b>	<b>15</b>	
Acc	54	46	82	71	66	64	65	64	55	

Fertility		Carcase							
		SS	DC	CWT	RIB	RUMP	EMA	RBV	IMF
EBVs	<b>2.7</b>	<b>-4.7</b>	<b>53</b>	<b>-0.8</b>	<b>-0.6</b>	<b>14.0</b>	<b>1.5</b>	<b>2.5</b>	
Acc	61	36	56	58	58	56	52	60	

	<b>\$GN</b>	<b>297</b>	<b>\$A</b>	<b>229</b>	<b>\$D</b>	<b>191</b>	<b>\$GS</b>	<b>214</b>
--	-------------	------------	------------	------------	------------	------------	-------------	------------



U1640 is the #2 EMA bull in the Sale, top 2% of the breed.

**10 LAWSONS MIRACULOUS U1663 AI**

Birth Date: 21/3/23 AM: AMFU NH: NHFU CA: CAFU DD: DD5%  
 Society ID: VLY23U1663 ASA: HBR 50k: Mob: UWABS2 JBAS J-Bas 6  
 Sire: LAWSONS MIRACULOUS Q44  
 LAWSONS MOMENTOUS M518  
 LAWSONS ANTICIPATION K914  
 Dam: LAWSONS MONTALTO R1608  
 LAWSONS EVIDENT J1432  
 GAR MOMENTUM  
 LAWSONS AFFRICA H229  
 GAR ANTICIPATION 7261  
 EAGLEHAWK JEDDA Z48  
 TE MANIA BERKLEY B1  
 TE MANIA MITTAGONG H390  
 DUNOON EVIDENT E614  
 LAWSONS PONO V346 E1181

June 2023 Trans Tasman Angus Cattle Evaluation

Calving Ease		Growth and Maternal								
DIR DTRS GL BWT		200	400	600	MCW	MILK				
EBVs	<b>3.9</b>	<b>-0.3</b>	<b>-3.1</b>	<b>3.2</b>	<b>46</b>	<b>87</b>	<b>107</b>	<b>91</b>	<b>15</b>	
Acc	56	47	82	70	68	66	66	65	57	
Fertility				Carcase						
SS DC CWT RIB RUMP				EMA	RBY	IMF				
EBVs	<b>3.4</b>	<b>-5.3</b>	<b>51</b>	<b>-0.6</b>	<b>-0.4</b>	<b>15.8</b>	<b>1.6</b>	<b>2.6</b>		
Acc	63	37	58	60	60	58	53	62		
	<b>\$GN</b>	<b>302</b>	<b>\$A</b>	<b>233</b>	<b>\$D</b>	<b>198</b>	<b>\$GS</b>	<b>219</b>		

U1663 is the highest EMA bull in the Sale at +15.8, top 1% of the breed.



**11 LAWSONS HOME TOWN U1511 AI**

Birth Date: 7/5/23 AM: AMFU NH: NHFU CA: CAFU DD: DD78%  
 Society ID: VLY23U1511 ASA: HBR 50k: Mob: UWABS2 JBAS J-Bas 6  
 Sire: G A R HOME TOWN  
 GAR ASHLAND  
 CHAIR ROCK SURE FIRE 6095  
 Dam: LAWSONS INGENUITY L52  
 LAWSONS PAYLOAD X951 E820  
 GAR EARLY BIRD  
 CHAIR ROCK AMBUSH 1018  
 GAR SURE FIRE  
 EAGLEHAWK JEDDA Z48  
 GAR NEW DESIGN 5050  
 GAR OBJECTIVE 1067  
 LAWSONS PAYLOAD X951  
 LAWSONS GAR NEW DESIGN 1407 A861

June 2023 Trans Tasman Angus Cattle Evaluation

Calving Ease		Growth and Maternal								
DIR DTRS GL BWT		200	400	600	MCW	MILK				
EBVs	<b>-3.7</b>	<b>-4.7</b>	<b>2.5</b>	<b>5.2</b>	<b>57</b>	<b>101</b>	<b>126</b>	<b>108</b>	<b>14</b>	
Acc	63	55	84	70	72	70	70	69	64	
Fertility				Carcase						
SS DC CWT RIB RUMP				EMA	RBY	IMF				
EBVs	<b>1.3</b>	<b>-5.4</b>	<b>75</b>	<b>-2.8</b>	<b>-4.7</b>	<b>9.5</b>	<b>1.1</b>	<b>3.7</b>		
Acc	66	41	63	64	64	63	59	66		
	<b>\$GN</b>	<b>300</b>	<b>\$A</b>	<b>226</b>	<b>\$D</b>	<b>189</b>	<b>\$GS</b>	<b>208</b>		

Home Town daughters are exceptional!



**12 LAWSONS HOME TOWN U1569 AI**

Birth Date: 21/5/23 AM: AMFU NH: NHFU CA: CAFU DD: DD12%  
 Society ID: VLY23U1569 ASA: HBR 50k: Mob: UWABS2 JBAS J-Bas 6  
 Sire: G A R HOME TOWN  
 GAR ASHLAND  
 CHAIR ROCK SURE FIRE 6095  
 Dam: LAWSONS RELIANT S1625  
 LAWSONS MOMENTUM Q1602  
 GAR EARLY BIRD  
 CHAIR ROCK AMBUSH 1018  
 GAR SURE FIRE  
 EAGLEHAWK JEDDA Z48  
 GAR SURE FIRE  
 GAR DESTINATION N244  
 GAR MOMENTUM  
 LAWSONS INGENUITY K192

June 2023 Trans Tasman Angus Cattle Evaluation

Calving Ease		Growth and Maternal								
DIR DTRS GL BWT		200	400	600	MCW	MILK				
EBVs	<b>0.2</b>	<b>-1.9</b>	<b>-1.4</b>	<b>3.7</b>	<b>55</b>	<b>97</b>	<b>117</b>	<b>84</b>	<b>16</b>	
Acc	64	56	84	70	72	70	71	69	63	
Fertility				Carcase						
SS DC CWT RIB RUMP				EMA	RBY	IMF				
EBVs	<b>1.2</b>	<b>-4.4</b>	<b>70</b>	<b>-2.5</b>	<b>-3.7</b>	<b>13.1</b>	<b>1.1</b>	<b>4.3</b>		
Acc	68	41	64	65	64	64	60	67		
	<b>\$GN</b>	<b>339</b>	<b>\$A</b>	<b>248</b>	<b>\$D</b>	<b>205</b>	<b>\$GS</b>	<b>230</b>		

Well balanced Home Town son out of a two year old Reliant daughter. U1569 ranks in the top 10% of the breed for Heavy Grain Index (\$GN), Domestic Index (\$D) and IMF. U1569 is one of the highest EMA bulls in the Sale, top 3% of the breed.



**13 LAWSONS HOME TOWN U1619 AI**

Birth Date: 9/3/23 AM: AMFU NH: NHFU CA: CAFU DD: DDFU  
 Society ID: VLY23U1619 ASA: HBR 50k: Y Mob: UWABS2 JBAS J-Bas 6  
 Sire: GAR ASHLAND GAR EARLY BIRD  
 GAR HOME TOWN CHAIR ROCK AMBUSH 1018  
 CHAIR ROCK SURE FIRE 6095 GAR SURE FIRE  
 EAGLEHAWK JEDDA Z48  
 Dam: GAR SUNRISE MCC DAYBREAK  
 LAWSONS SUNRISE P152 GAR OBJECTIVE R227  
 LAWSONS BARTEL E7 AYRVALE BARTEL E7  
 LAWSONS INVINCIBLE G697

June 2023 Trans Tasman Angus Cattle Evaluation

Calving Ease		Growth and Maternal								
		DIR	DTRS	GL	BWT	200	400	600	MCW	MILK
EBVs	<b>6.8</b>	<b>4.2</b>	<b>-7.0</b>	<b>1.7</b>	<b>54</b>	<b>96</b>	<b>113</b>	<b>76</b>	<b>16</b>	
Acc	63	55	84	74	71	69	70	69	64	
Fertility		Carcass								
		SS	DC	CWT	RIB	RUMP	EMA	RBV	IMF	
EBVs	<b>0.9</b>	<b>-6.2</b>	<b>69</b>	<b>-1.8</b>	<b>-2.5</b>	<b>10.9</b>	<b>0.7</b>	<b>3.9</b>		
Acc	67	40	63	64	64	63	59	66		
	<b>\$GN</b>	<b>362</b>	<b>\$A</b>	<b>271</b>	<b>\$D</b>	<b>231</b>	<b>\$GS</b>	<b>253</b>		



U1619 is the highest Domestic Index (\$D) and the #2 ranked Heavy Grain Index bull in the Sale, top 2% of the breed for \$D and \$GN, top 10% for EMA.

**14 LAWSONS HOME TOWN U1645 AI**

Birth Date: 9/3/23 AM: AMFU NH: NHFU CA: CAFU DD: DDFU  
 Society ID: VLY23U1645 ASA: HBR 50k: Y Mob: UWABS2 JBAS J-Bas 6  
 Sire: GAR ASHLAND GAR EARLY BIRD  
 GAR HOME TOWN CHAIR ROCK AMBUSH 1018  
 CHAIR ROCK SURE FIRE 6095 GAR SURE FIRE  
 EAGLEHAWK JEDDA Z48  
 Dam: LAWSONS INCREDIBLE H803 AYRVALE BARTEL E7  
 LAWSONS INCREDIBLE Q1767 LAWSONS DINKY DJ E447  
 LAWSONS TANK X1235  
 LAWSONS PREMIUM BEEF B779

June 2023 Trans Tasman Angus Cattle Evaluation

Calving Ease		Growth and Maternal								
		DIR	DTRS	GL	BWT	200	400	600	MCW	MILK
EBVs	<b>6.1</b>	<b>4.8</b>	<b>-6.4</b>	<b>1.9</b>	<b>49</b>	<b>88</b>	<b>104</b>	<b>64</b>	<b>17</b>	
Acc	63	55	83	74	71	69	70	69	63	
Fertility		Carcass								
		SS	DC	CWT	RIB	RUMP	EMA	RBV	IMF	
EBVs	<b>1.2</b>	<b>-6.5</b>	<b>65</b>	<b>-1.5</b>	<b>-2.0</b>	<b>11.3</b>	<b>0.8</b>	<b>4.1</b>		
Acc	66	40	62	63	63	63	59	65		
	<b>\$GN</b>	<b>353</b>	<b>\$A</b>	<b>267</b>	<b>\$D</b>	<b>226</b>	<b>\$GS</b>	<b>251</b>		



U1645 is the #2 ranked bull in the Sale for Domestic Index (\$D), top 3% of the breed and the #5 ranked for Heavy Grain Index, top 2%, top 10% for EMA.

**15 LAWSONS HOME TOWN U1667 AI**

Birth Date: 12/3/23 AM: AMFU NH: NHFU CA: CAFU DD: DD3%  
 Society ID: VLY23U1667 ASA: HBR 50k: Mob: UWABS2 JBAS J-Bas 6  
 Sire: GAR ASHLAND GAR EARLY BIRD  
 GAR HOME TOWN CHAIR ROCK AMBUSH 1018  
 CHAIR ROCK SURE FIRE 6095 GAR SURE FIRE  
 EAGLEHAWK JEDDA Z48  
 Dam: VAR INDEX GAR INGENUITY  
 LAWSONS INDEX S1503 SANDPOINT BLACKBIRD 8809  
 LAWSONS PROPHET P177 GAR PROPHET  
 LAWSONS REGENT K207

June 2023 Trans Tasman Angus Cattle Evaluation

Calving Ease		Growth and Maternal								
		DIR	DTRS	GL	BWT	200	400	600	MCW	MILK
EBVs	<b>4.5</b>	<b>1.6</b>	<b>-7.4</b>	<b>3.6</b>	<b>54</b>	<b>95</b>	<b>118</b>	<b>92</b>	<b>14</b>	
Acc	63	55	83	72	71	69	69	69	63	
Fertility		Carcass								
		SS	DC	CWT	RIB	RUMP	EMA	RBV	IMF	
EBVs	<b>0.6</b>	<b>-5.5</b>	<b>67</b>	<b>-0.7</b>	<b>-2.0</b>	<b>10.3</b>	<b>0.7</b>	<b>3.8</b>		
Acc	67	41	63	64	63	63	58	66		
	<b>\$GN</b>	<b>335</b>	<b>\$A</b>	<b>251</b>	<b>\$D</b>	<b>209</b>	<b>\$GS</b>	<b>234</b>		



Home Town out of a two year old Index daughter. U1667 ranks in the top 10% of the breed for Heavy Grain Index (\$GN) and Domestic Index (\$D).

**16 LAWSONS ROCKY U1542 AI**

Birth Date: 25/4/23 AM: AMFU NH: NHFU CA: CAFU DD: DD2%  
 Society ID: VLY23U1542 ASA: HBR 50k: Mob: UWABS2 JBAS J-Bas 6  
 Sire: LAWSONS ROCKY R4010  
 GAR MOMENTUM  
 LAWSONS JUDD P4005  
 TE MANIA EMPEROR E343  
 Dam: LAWSONS EMPEROR S1630  
 LAWSONS INCREDIBLE L121  
 GAR PROGRESS  
 GAR BIG EYE 1770  
 PARINGA JUDD J5  
 EAGLEHAWK JEDDA Z48  
 TEMANIA BERKLEY B1  
 TE MANIA LOWAN Z74  
 LAWSONS INCREDIBLE H803  
 LAWSONS HENRY VIII F127

June 2023 Trans Tasman Angus Cattle Evaluation									
Calving Ease ✓					Growth and Maternal				
	DIR	DTRS	GL	BWT	200	400	600	MCW	MILK
EBVs	3.8	4.2	-3.1	4.5	55	98	131	111	20
Acc	60	52	82	68	70	68	68	66	59
Fertility					Carcase				
	SS	DC	CWT	RIB	RUMP	EMA	RBV	IMF	
EBVs	2.4	-4.6	76	-0.1	-1.0	8.6	0.6	3.4	
Acc	66	42	60	62	62	61	56	64	
	\$GN	310	\$A	234	\$D	187	\$GS	220	

Lots 16-20 are all Rocky sons out of two year old Emperor heifers.



**17 LAWSONS ROCKY U1546 AI**

Birth Date: 18/4/23 AM: AMFU NH: NHFU CA: CAFU DD: DD25%  
 Society ID: VLY23U1546 ASA: HBR 50k: Mob: UWABS2 JBAS J-Bas 6  
 Sire: LAWSONS ROCKY R4010  
 GAR MOMENTUM  
 LAWSONS JUDD P4005  
 TE MANIA EMPEROR E343  
 Dam: LAWSONS EMPEROR S1636  
 LAWSONS BARTEL E7 L124  
 GAR PROGRESS  
 GAR BIG EYE 1770  
 PARINGA JUDD J5  
 EAGLEHAWK JEDDA Z48  
 TEMANIA BERKLEY B1  
 TE MANIA LOWAN Z74  
 AYRVALE BARTEL E7  
 LAWSONS DINKY DI E447

June 2023 Trans Tasman Angus Cattle Evaluation									
Calving Ease ✓					Growth and Maternal				
	DIR	DTRS	GL	BWT	200	400	600	MCW	MILK
EBVs	6.4	7.1	-6.7	2.4	50	88	111	87	20
Acc	60	52	82	68	70	68	68	66	59
Fertility					Carcase				
	SS	DC	CWT	RIB	RUMP	EMA	RBV	IMF	
EBVs	2.2	-5.3	62	1.6	1.3	8.2	0.2	3.5	
Acc	66	43	60	62	62	61	57	64	
	\$GN	319	\$A	237	\$D	193	\$GS	221	

Lots 16-20 are all Rocky sons out of two year old Emperor heifers.



**18 LAWSONS ROCKY U1549 AI**

Birth Date: 25/4/23 AM: AMFU NH: NHFU CA: CAFU DD: DDFU  
 Society ID: VLY23U1549 ASA: HBR 50k: Mob: UWABS2 JBAS J-Bas 6  
 Sire: LAWSONS ROCKY R4010  
 GAR MOMENTUM  
 LAWSONS JUDD P4005  
 TE MANIA EMPEROR E343  
 Dam: LAWSONS EMPEROR S1642  
 LAWSONS BARTEL E7 L69  
 GAR PROGRESS  
 GAR BIG EYE 1770  
 PARINGA JUDD J5  
 EAGLEHAWK JEDDA Z48  
 TEMANIA BERKLEY B1  
 TE MANIA LOWAN Z74  
 AYRVALE BARTEL E7  
 LAWSONS TANK D1063

June 2023 Trans Tasman Angus Cattle Evaluation									
Calving Ease ✓					Growth and Maternal				
	DIR	DTRS	GL	BWT	200	400	600	MCW	MILK
EBVs	3.7	4.7	-3.1	3.7	51	91	118	102	19
Acc	60	52	82	68	70	68	67	66	59
Fertility					Carcase				
	SS	DC	CWT	RIB	RUMP	EMA	RBV	IMF	
EBVs	2.1	-4.9	66	0.7	0.1	8.2	0.6	3.3	
Acc	65	42	60	62	62	60	56	64	
	\$GN	300	\$A	226	\$D	184	\$GS	210	

Lots 16-20 are all Rocky sons out of two year old Emperor heifers.



**19 LAWSONS ROCKY U1551 AI**

Birth Date: 16/4/23 AM: AMFU NH: NHFU CA: CAFU DD: DDFU  
 Society ID: VLY23U1551 ASA: HBR 50k: Mob: UWABS2 JBAS J-Bas 6  
 Sire: GAR MOMENTUM GAR PROGRESS  
 LAWSONS ROCKY R4010 GAR BIG EYE 1770  
 LAWSONS JUDD P4005 PARINGA JUDD J5  
 EAGLEHAWK JEDDA Z48  
 Dam: TE MANIA EMPEROR E343 TEMANIA BERKLEY B1  
 LAWSONS EMPEROR S1644 TE MANIA LOWAN Z74  
 LAWSONS INCREDIBLE L105 LAWSONS INCREDIBLE H803  
 LAWSONS INVINCIBLE F285

June 2023 Trans Tasman Angus Cattle Evaluation									
Calving Ease				Growth and Maternal					
	DIR	DTRS	GL	BWT	200	400	600	MCW	MILK
EBVs	6.8	7.1	-7.7	2.7	53	93	120	92	19
Acc	60	52	82	68	70	68	68	66	59
Fertility				Carcase					
	SS	DC	CWT	RIB	RUMP	EMA	RBV	IMF	
EBVs	2.3	-5.1	69	1.7	1.3	8.0	0.0	3.6	
Acc	66	42	60	62	62	61	56	64	
	<b>\$GN</b>	327	<b>\$A</b>	243	<b>\$D</b>	196	<b>\$GS</b>	228	

Neat curve-bending Rocky son out of a two year Emperor heifer. U1551 ranks in the top 10% of the breed for Heavy Grain Index (\$GN).



**20 LAWSONS ROCKY U1552 AI**

Birth Date: 21/4/23 AM: AMFU NH: NH5% CA: CAFU DD: DD5%  
 Society ID: VLY23U1552 ASA: HBR 50k: Mob: UWABS2 JBAS J-Bas 6  
 Sire: GAR MOMENTUM GAR PROGRESS  
 LAWSONS ROCKY R4010 GAR BIG EYE 1770  
 LAWSONS JUDD P4005 PARINGA JUDD J5  
 EAGLEHAWK JEDDA Z48  
 Dam: TE MANIA EMPEROR E343 TEMANIA BERKLEY B1  
 LAWSONS EMPEROR S1645 TE MANIA LOWAN Z74  
 LAWSONS INCREDIBLE L96 LAWSONS INCREDIBLE H803  
 LAWSONS PROGRESS G377

June 2023 Trans Tasman Angus Cattle Evaluation									
Calving Ease				Growth and Maternal					
	DIR	DTRS	GL	BWT	200	400	600	MCW	MILK
EBVs	5.2	5.7	-5.5	3.1	51	89	115	89	20
Acc	60	51	82	68	70	68	68	66	59
Fertility				Carcase					
	SS	DC	CWT	RIB	RUMP	EMA	RBV	IMF	
EBVs	2.1	-4.5	64	0.5	-0.4	9.8	0.5	3.8	
Acc	65	42	60	62	62	60	56	64	
	<b>\$GN</b>	319	<b>\$A</b>	236	<b>\$D</b>	188	<b>\$GS</b>	220	

Rocky son out of a two year-old Emperor heifer.



**21 LAWSONS ROCKY U1562 AI**

Birth Date: 20/5/23 AM: AMFU NH: NHFU CA: CAFU DD: DD3%  
 Society ID: VLY23U1562 ASA: HBR 50k: Mob: UWABS2 JBAS J-Bas 6  
 Sire: GAR MOMENTUM GAR PROGRESS  
 LAWSONS ROCKY R4010 GAR BIG EYE 1770  
 LAWSONS JUDD P4005 PARINGA JUDD J5  
 EAGLEHAWK JEDDA Z48  
 Dam: TE MANIA MONTALTO M1314 TEMANIA BERKLEY B1  
 LAWSONS MONTALTO R1596 TE MANIA MITTAGONG H390  
 LAWSONS NOVAK K246 LAWSONS NOVAK E313  
 LAWSONS SELECTIVE F8391

June 2023 Trans Tasman Angus Cattle Evaluation									
Calving Ease				Growth and Maternal					
	DIR	DTRS	GL	BWT	200	400	600	MCW	MILK
EBVs	4.7	3.8	-1.9	3.5	51	92	121	103	20
Acc	59	49	83	72	70	68	68	67	59
Fertility				Carcase					
	SS	DC	CWT	RIB	RUMP	EMA	RBV	IMF	
EBVs	3.0	-5.4	67	-0.5	-1.1	10.5	0.6	4.0	
Acc	66	39	60	61	61	60	55	63	
	<b>\$GN</b>	313	<b>\$A</b>	236	<b>\$D</b>	190	<b>\$GS</b>	224	

Well balanced Rocky son with elite carcass potential.





**22 LAWSONS ROCKY U1601 AI**

Birth Date: 7/4/23 AM: AM25% NH: NHFU CA: CAFU DD: DD25%  
 Society ID: VLY23U1601 ASA: HBR 50k: Mob: UWABS2 JBAS J-Bas 6  
 Sire: GAR MOMENTUM GAR PROGRESS  
 LAWSONS ROCKY R4010 GAR BIG EYE 1770  
 LAWSONS JUDD P4005 PARINGA JUDD J5  
 EAGLEHAWK JEDDA Z48  
 Dam: DUNOON EVIDENT E614 TE MANIA BARTEL B219  
 LAWSONS EVIDENT J1429 DUNOON ELSA B681  
 LAWSONS EQUATOR E1162 WILSONS DOWN EQUATOR V191  
 LAWSONS SCHWARZENEGGER C833

June 2023 Trans Tasman Angus Cattle Evaluation

Calving Ease ✓		Growth and Maternal									
		DIR	DTRS	GL	BWT	200	400	600	MCW	MILK	
EBVs	<b>0.8</b>		<b>-2.0</b>	<b>3.9</b>	<b>49</b>	<b>86</b>	<b>112</b>	<b>98</b>	<b>17</b>		
Acc	63		84	47	57	67	65	55	50		
Fertility				Carcase							
				SS	DC	CWT	RIB	RUMP	EMA	RBV	IMF
EBVs	<b>2.2</b>	<b>-5.3</b>	<b>62</b>	<b>-0.4</b>	<b>0.1</b>	<b>9.5</b>	<b>1.0</b>	<b>2.8</b>			
Acc	50	34	64	55	42	71	23	36			
	<b>\$GN</b>	<b>283</b>	<b>\$A</b>	<b>212</b>	<b>\$D</b>	<b>173</b>	<b>\$GS</b>	<b>198</b>			

Please note mid-parent EBVs are printed. Registration is pending for U1601.



**23 LAWSONS ROCKY U1628 AI**

Birth Date: 20/3/23 AM: AM8% NH: NH5% CA: CAFU DD: DD5%  
 Society ID: VLY23U1628 ASA: HBR 50k: Mob: UWABS2 JBAS J-Bas 6  
 Sire: GAR MOMENTUM GAR PROGRESS  
 LAWSONS ROCKY R4010 GAR BIG EYE 1770  
 LAWSONS JUDD P4005 PARINGA JUDD J5  
 EAGLEHAWK JEDDA Z48  
 Dam: LAWSONS LINKEDIN L483 PARINGA JUDD J5  
 LAWSONS LINKEDIN P206 LAWSONS BARTEL E7 H221  
 LAWSONS EVIDENT J756 DUNOON EVIDENT E614  
 LAWSONS RIGHT DIRECTION D673

June 2023 Trans Tasman Angus Cattle Evaluation

Calving Ease ✓		Growth and Maternal									
		DIR	DTRS	GL	BWT	200	400	600	MCW	MILK	
EBVs	<b>5.6</b>	<b>2.3</b>	<b>-3.1</b>	<b>2.6</b>	<b>52</b>	<b>95</b>	<b>121</b>	<b>92</b>	<b>23</b>		
Acc	59	49	83	73	71	69	68	67	60		
Fertility				Carcase							
				SS	DC	CWT	RIB	RUMP	EMA	RBV	IMF
EBVs	<b>2.7</b>	<b>-5.0</b>	<b>76</b>	<b>0.5</b>	<b>1.5</b>	<b>10.2</b>	<b>0.4</b>	<b>3.4</b>			
Acc	66	39	60	61	62	61	56	64			
	<b>\$GN</b>	<b>330</b>	<b>\$A</b>	<b>245</b>	<b>\$D</b>	<b>198</b>	<b>\$GS</b>	<b>230</b>			

U1628 ranks in the top 10% of the breed for Heavy Grain Index (\$GN).



**24 LAWSONS ROCKY U1632 AI**

Birth Date: 19/3/23 AM: AMFU NH: NH1% CA: CAFU DD: DD1%  
 Society ID: VLY23U1632 ASA: HBR 50k: Mob: UWABS2 JBAS J-Bas 6  
 Sire: GAR MOMENTUM GAR PROGRESS  
 LAWSONS ROCKY R4010 GAR BIG EYE 1770  
 LAWSONS JUDD P4005 PARINGA JUDD J5  
 EAGLEHAWK JEDDA Z48  
 Dam: LAWSONS LINKEDIN L483 PARINGA JUDD J5  
 LAWSONS LINKEDIN P230 LAWSONS BARTEL E7 H221  
 LAWSONS BARTEL E7 L863 AYRVALE BARTEL E7  
 LAWSONS RIGHT DIRECTION D303

June 2023 Trans Tasman Angus Cattle Evaluation

Calving Ease ✓		Growth and Maternal									
		DIR	DTRS	GL	BWT	200	400	600	MCW	MILK	
EBVs	<b>7.1</b>	<b>5.1</b>	<b>-2.9</b>	<b>1.8</b>	<b>47</b>	<b>86</b>	<b>114</b>	<b>87</b>	<b>24</b>		
Acc	60	50	84	74	71	68	68	67	60		
Fertility				Carcase							
				SS	DC	CWT	RIB	RUMP	EMA	RBV	IMF
EBVs	<b>2.5</b>	<b>-5.0</b>	<b>69</b>	<b>0.7</b>	<b>1.7</b>	<b>9.9</b>	<b>0.5</b>	<b>3.4</b>			
Acc	66	40	61	62	62	61	56	64			
	<b>\$GN</b>	<b>313</b>	<b>\$A</b>	<b>234</b>	<b>\$D</b>	<b>185</b>	<b>\$GS</b>	<b>220</b>			

Rocky has been used widely across Australia in both seedstock and commercial herds with great success.



**25 LAWSONS ROCKY U1650 AI**

Birth Date: 17/3/23 AM: AMFU NH: NHFU CA: CAFU DD: DD19%  
 Society ID: VLY23U1650 ASA: HBR 50k: Mob: UWABS2 JBAS J-Bas 6  
 Sire: LAWSONS ROCKY R4010 GAR MOMENTUM GAR PROGRESS GAR BIG EYE 1770 PARINGA JUDD J5 EAGLEHAWK JEDDA Z48  
 LAWSONS JUDD P4005  
 Dam: LAWSONS ASHLAND R1510 GAR ASHLAND GAR EARLY BIRD CHAIR ROCK AMBUSH 1018 ALLOURA GET CRACKING G10 LAWSONS INGENUITY L52  
 LAWSONS GET CRACKING P240

June 2023 Trans Tasman Angus Cattle Evaluation

Calving Ease		Growth and Maternal							
DIR	DTRS	GL	BWT	200	400	600	MCW	MILK	
4.0	4.4	-4.9	4.2	59	103	135	121	18	
60	50	83	72	70	68	68	67	59	
Fertility			Carcase						
SS	DC	CWT	RIB	RUMP	EMA	RBV	IMF		
1.8	-4.4	76	-0.4	-0.9	11.4	0.7	3.6		
65	39	59	61	61	60	56	63		
\$GN		334	\$A	248	\$D	199	\$GS	232	



High growth Rocky son with breed leading carcase merit. U1650 ranks in the top 10% of the breed for Heavy Grain Index (\$GN) and EMA.

**26 LAWSONS ROCKY U1660 AI**

Birth Date: 17/3/23 AM: AMFU NH: NHFU CA: CAFU DD: DD6%  
 Society ID: VLY23U1660 ASA: HBR 50k: Mob: UWABS2 JBAS J-Bas 6  
 Sire: LAWSONS ROCKY R4010 GAR MOMENTUM GAR PROGRESS GAR BIG EYE 1770 PARINGA JUDD J5 EAGLEHAWK JEDDA Z48  
 LAWSONS JUDD P4005  
 Dam: LAWSONS MONTALTO R1548 TE MANIA MONTALTO M1314 TE MANIA BERKLEY B1 TE MANIA MITTAGONG H390 ALLOURA GET CRACKING G10 LAWSONS BARTEL E7 M1755  
 LAWSONS GET CRACKING P105

June 2023 Trans Tasman Angus Cattle Evaluation

Calving Ease		Growth and Maternal							
DIR	DTRS	GL	BWT	200	400	600	MCW	MILK	
5.9	5.9	-4.5	4.1	52	92	121	100	19	
59	49	83	72	70	68	67	66	58	
Fertility			Carcase						
SS	DC	CWT	RIB	RUMP	EMA	RBV	IMF		
2.7	-6.0	67	-0.2	-0.8	11.7	0.7	4.0		
65	39	59	61	61	60	55	63		
\$GN		335	\$A	254	\$D	205	\$GS	242	



U1660 ranks in the top 10% of the breed for Heavy Grain Index (\$GN) and EMA.

**27 LAWSONS ROCKY U1656 AI**

Birth Date: 19/3/23 AM: AMFU NH: NHFU CA: CAFU DD: DDFU  
 Society ID: VLY23U1656 ASA: HBR 50k: Mob: UWABS2 JBAS J-Bas 6  
 Sire: LAWSONS ROCKY R4010 GAR MOMENTUM GAR PROGRESS GAR BIG EYE 1770 PARINGA JUDD J5 EAGLEHAWK JEDDA Z48  
 LAWSONS JUDD P4005  
 Dam: LAWSONS ASHLAND R1534 GAR ASHLAND GAR EARLY BIRD CHAIR ROCK AMBUSH 1018 GAR SUNRISE LAWSONS MOMENTUM M1718  
 LAWSONS SUNRISE P131

June 2023 Trans Tasman Angus Cattle Evaluation

Calving Ease		Growth and Maternal							
DIR	DTRS	GL	BWT	200	400	600	MCW	MILK	
2.9	3.6	-3.6	3.6	59	102	130	103	21	
61	51	84	73	71	69	68	68	60	
Fertility			Carcase						
SS	DC	CWT	RIB	RUMP	EMA	RBV	IMF		
1.7	-4.0	76	0.2	0.6	10.6	0.2	3.9		
66	39	60	62	62	61	56	64		
\$GN		348	\$A	250	\$D	198	\$GS	234	



U1656 ranks in the top 10% of the breed for Heavy Grain Index (\$GN).

**28 LAWSONS ROCKY U1664 AI**

Birth Date: 13/4/23 AM: AM6% NH: NHFU CA: CAFU DD: DDD7%  
 Society ID: VLY23U1664 ASA: HBR 50k: Mob: UWABS2 JBAS J-Bas 6  
 Sire: GAR MOMENTUM  
**LAWSONS ROCKY R4010**  
 LAWSONS JUDD P4005  
 Dam: TE MANIA MONTALTO M1314  
**LAWSONS MONTALTO R1610**  
 LAWSONS SUNRISE P275

June 2023 Trans Tasman Angus Cattle Evaluation									
Calving Ease ✓					Growth and Maternal				
	DIR	DTRS	GL	BWT	200	400	600	MCW	MILK
EBVs	<b>5.5</b>	<b>-2.5</b>	<b>3.1</b>	<b>51</b>	<b>91</b>	<b>118</b>	<b>94</b>	<b>20</b>	
Acc	21	79	79	51	52	52	61	25	
Fertility				Carcase					
	SS	DC	CWT	RIB	RUMP	EMA	RBV	IMF	
EBVs	<b>2.7</b>	<b>-5.9</b>	<b>66</b>	<b>-0.2</b>	<b>-0.2</b>	<b>10.4</b>	<b>0.6</b>	<b>3.5</b>	
Acc	32	22	52	50	46	11	46	21	
	<b>\$GN</b>	<b>319</b>	<b>\$A</b>	<b>241</b>	<b>\$D</b>	<b>197</b>	<b>\$GS</b>	<b>229</b>	

Please note mid-parent EBVs are printed. Sire verification in pending so please check with us at Sale time for results.



**29 LAWSONS ENHANCE U1610 AI**

Birth Date: 13/3/23 AM: AM5% NH: NH5% CA: CAFU DD: DDFU  
 Society ID: VLY23U1610 ASA: HBR 50k: Mob: UWABS2 JBAS J-Bas 6  
 Sire: SYDGEN EXCEED 3223  
**SYDGEN ENHANCE**  
 SYDGEN RITA 2618  
 Dam: GAR PROPHET  
**LAWSONS PROPHET P112**  
 LAWSONS BARTEL E7 M1679

June 2023 Trans Tasman Angus Cattle Evaluation									
Calving Ease ✓					Growth and Maternal				
	DIR	DTRS	GL	BWT	200	400	600	MCW	MILK
EBVs	<b>5.3</b>	<b>4.9</b>	<b>-2.3</b>	<b>2.5</b>	<b>58</b>	<b>100</b>	<b>130</b>	<b>96</b>	<b>22</b>
Acc	66	60	71	70	71	69	69	69	65
Fertility				Carcase					
	SS	DC	CWT	RIB	RUMP	EMA	RBV	IMF	
EBVs	<b>2.2</b>	<b>-4.8</b>	<b>71</b>	<b>-1.3</b>	<b>-0.5</b>	<b>6.4</b>	<b>0.0</b>	<b>3.6</b>	
Acc	66	47	64	65	64	63	61	66	
	<b>\$GN</b>	<b>332</b>	<b>\$A</b>	<b>245</b>	<b>\$D</b>	<b>197</b>	<b>\$GS</b>	<b>229</b>	

U1610 ranks in the top 10% of the breed for Heavy Grain Index (\$GN).



**30 LAWSONS ENHANCE U1613 AI**

Birth Date: 24/3/23 AM: AMFU NH: NHFU CA: CAFU DD: DDFU  
 Society ID: VLY23U1613 ASA: HBR 50k: Mob: UWABS2 JBAS J-Bas 6  
 Sire: SYDGEN EXCEED 3223  
**SYDGEN ENHANCE**  
 SYDGEN RITA 2618  
 Dam: GAR PROPHET  
**LAWSONS PROPHET P127**  
 LAWSONS NOVAK J217 M1632

June 2023 Trans Tasman Angus Cattle Evaluation									
Calving Ease ✓					Growth and Maternal				
	DIR	DTRS	GL	BWT	200	400	600	MCW	MILK
EBVs	<b>2.9</b>	<b>2.8</b>	<b>-0.3</b>	<b>3.0</b>	<b>56</b>	<b>97</b>	<b>126</b>	<b>94</b>	<b>20</b>
Acc	65	59	83	73	70	68	69	70	65
Fertility				Carcase					
	SS	DC	CWT	RIB	RUMP	EMA	RBV	IMF	
EBVs	<b>1.9</b>	<b>-4.2</b>	<b>68</b>	<b>-1.7</b>	<b>-1.2</b>	<b>5.7</b>	<b>-0.2</b>	<b>4.1</b>	
Acc	66	46	63	64	64	63	60	66	
	<b>\$GN</b>	<b>312</b>	<b>\$A</b>	<b>226</b>	<b>\$D</b>	<b>178</b>	<b>\$GS</b>	<b>209</b>	

Enhance was one of the most widely used sires in the US for a number of years and was also widely used in Australia and New Zealand.



**31 LAWSONS ENHANCE U1621 AI**

Birth Date: 14/3/23 AM: AM4% NH: NHFU CA: CAFU DD: DDFU  
 Society ID: VLY23U1621 ASA: HBR 50k: Mob: UWABS2 JBAS J-Bas 6  
 Sire: SYDGEN ENHANCE SYDGEN EXCEED 3223 SYDGEN GOOGOL SYDGEN FOREVER LADY 1225 SYDGEN LIBERTY GA 8627 EAGLEHAWK JEDDA Z48  
 SYDGEN RITA 2618  
 Dam: ALLOURA GET CRACKING G10 TE MANIA BERKLEY B1 ALLOURA JEDDA Z15 LAWSONS GET CRACKING P153 GAR PROPHET LAWSONS NOVAK J1443 LAWSONS PROPHET M0966

June 2023 Trans Tasman Angus Cattle Evaluation									
Calving Ease ✓				Growth and Maternal					
	DIR	DTRS	GL	BWT	200	400	600	MCW	MILK
EBVs	6.1	5.8	-3.9	2.3	52	89	114	84	16
Acc	65	59	83	73	70	68	69	70	65
Fertility			Carcase						
	SS	DC	CWT	RIB	RUMP	EMA	RBV	IMF	
EBVs	1.4	-4.9	60	-1.0	-0.7	9.4	0.2	4.2	
Acc	66	45	63	64	64	63	59	65	
	<b>\$GN</b>	<b>331</b>	<b>\$A</b>	<b>243</b>	<b>\$D</b>	<b>194</b>	<b>\$GS</b>	<b>227</b>	

U1621 ranks in the top 10% of the breed for Heavy Grain Index (\$GN).



**32 LAWSONS ENHANCE U1625 AI**

Birth Date: 21/3/23 AM: AMFU NH: NHFU CA: CAFU DD: DD5%  
 Society ID: VLY23U1625 ASA: HBR 50k: Mob: UWABS2 JBAS J-Bas 6  
 Sire: SYDGEN ENHANCE SYDGEN EXCEED 3223 SYDGEN GOOGOL SYDGEN FOREVER LADY 1225 SYDGEN LIBERTY GA 8627 EAGLEHAWK JEDDA Z48  
 SYDGEN RITA 2618  
 Dam: GAR PROPHET C R A BEXTOR 872 5205 608 LAWSONS PROPHET P177 GAR OBJECTIVE 1885 LAWSONS REGENT K207 TUWHARETOA REGENT D145 LAWSONS DINKY DI E1143

June 2023 Trans Tasman Angus Cattle Evaluation									
Calving Ease ✓				Growth and Maternal					
	DIR	DTRS	GL	BWT	200	400	600	MCW	MILK
EBVs	3.9	2.5	-2.6	3.7	59	99	131	102	18
Acc	66	60	83	73	71	69	69	70	66
Fertility			Carcase						
	SS	DC	CWT	RIB	RUMP	EMA	RBV	IMF	
EBVs	1.9	-4.4	73	-1.2	-0.6	5.3	-0.3	3.8	
Acc	66	47	64	65	64	63	61	66	
	<b>\$GN</b>	<b>315</b>	<b>\$A</b>	<b>230</b>	<b>\$D</b>	<b>180</b>	<b>\$GS</b>	<b>213</b>	

Good outcross option here with this well balanced Enhance son.



**33 LAWSONS ENHANCE U1627 AI**

Birth Date: 17/3/23 AM: AMFU NH: NHFU CA: CAFU DD: DD11%  
 Society ID: VLY23U1627 ASA: HBR 50k: Mob: UWABS2 JBAS J-Bas 6  
 Sire: SYDGEN ENHANCE SYDGEN EXCEED 3223 SYDGEN GOOGOL SYDGEN FOREVER LADY 1225 SYDGEN LIBERTY GA 8627 EAGLEHAWK JEDDA Z48  
 SYDGEN RITA 2618  
 Dam: ALLOURA GET CRACKING G10 TE MANIA BERKLEY B1 ALLOURA JEDDA Z15 LAWSONS GET CRACKING P201 AYRVALE BARTEL E7 LAWSONS BARTEL E7 L137 LAWSONS HENRY VIII F127

June 2023 Trans Tasman Angus Cattle Evaluation									
Calving Ease ✓				Growth and Maternal					
	DIR	DTRS	GL	BWT	200	400	600	MCW	MILK
EBVs	5.7	4.5	-3.0	3.5	59	103	134	114	20
Acc	65	59	83	73	71	69	69	70	65
Fertility			Carcase						
	SS	DC	CWT	RIB	RUMP	EMA	RBV	IMF	
EBVs	2.2	-5.5	77	-1.3	-0.9	9.6	0.5	3.7	
Acc	66	45	63	64	64	63	60	65	
	<b>\$GN</b>	<b>346</b>	<b>\$A</b>	<b>259</b>	<b>\$D</b>	<b>210</b>	<b>\$GS</b>	<b>244</b>	

High growth Enhance son, U1627 ranks in the top 10% of the breed for Heavy Grain Index (\$GN) and Domestic Index (\$D).



**34 LAWSONS ENHANCE U1642 AI**

Birth Date: 19/3/23 AM: AMFU NH: NHFU CA: CAFU DD: DD25%  
 Society ID: VLY23U1642 ASA: HBR 50k: Mob: UWABS2 JBAS J-Bas 6  
 Sire: SYDGEN ENHANCE SYDGEN EXCEED 3223 SYDGEN GOOGOL SYDGEN FOREVER LADY 1225 SYDGEN LIBERTY GA 8627 EAGLEHAWK JEDDA Z48  
 Dam: LAWSONS MOMENTOUS Q1759 LAWSONS DINKY DI E447 GAR MOMENTUM LAWSONS AFRICA H229 LAWSONS DINKY-DI Z191 LAWSONS PREMIUM BEEF B774

June 2023 Trans Tasman Angus Cattle Evaluation									
Calving Ease ✓					Growth and Maternal				
	DIR	DTRS	GL	BWT	200	400	600	MCW	MILK
EBVs	2.4	3.0	-3.5	4.3	57	99	131	112	19
Acc	67	61	83	73	72	70	71	71	67
Fertility			Carcase						
	SS	DC	CWT	RIB	RUMP	EMA	RBY	IMF	
EBVs	2.7	-3.6	65	-2.4	-1.6	8.9	0.3	3.5	
Acc	68	46	65	65	65	64	61	67	
	\$GN	298	\$A	218	\$D	171	\$GS	202	



Lots 34 and 35 are both Enhance x Momentous sons.

**35 LAWSONS ENHANCE U1646 AI**

Birth Date: 12/3/23 AM: AMFU NH: NHFU CA: CAFU DD: DD25%  
 Society ID: VLY23U1646 ASA: HBR 50k: Mob: UWABS2 JBAS J-Bas 6  
 Sire: SYDGEN ENHANCE SYDGEN EXCEED 3223 SYDGEN GOOGOL SYDGEN FOREVER LADY 1225 SYDGEN LIBERTY GA 8627 EAGLEHAWK JEDDA Z48  
 Dam: LAWSONS MOMENTOUS M518 LAWSONS DINKY DI E447 GAR MOMENTUM LAWSONS AFRICA H229 LAWSONS DINKY-DI Z191 LAWSONS PREMIUM BEEF B774

June 2023 Trans Tasman Angus Cattle Evaluation									
Calving Ease ✓					Growth and Maternal				
	DIR	DTRS	GL	BWT	200	400	600	MCW	MILK
EBVs	5.2	4.7	-6.9	2.7	54	96	124	94	21
Acc	67	61	83	73	72	70	71	71	67
Fertility			Carcase						
	SS	DC	CWT	RIB	RUMP	EMA	RBY	IMF	
EBVs	2.7	-3.8	62	-1.7	-0.8	8.1	-0.1	3.9	
Acc	68	46	65	66	65	64	61	67	
	\$GN	310	\$A	225	\$D	178	\$GS	209	



Lots 34 and 35 are both Enhance x Momentous sons.

**36 LAWSONS ENHANCE U1673 AI**

Birth Date: 23/3/23 AM: AMFU NH: NHFU CA: CAFU DD: DD13%  
 Society ID: VLY23U1673 ASA: HBR 50k: Mob: UWABS2 JBAS J-Bas 6  
 Sire: SYDGEN ENHANCE SYDGEN EXCEED 3223 SYDGEN GOOGOL SYDGEN FOREVER LADY 1225 SYDGEN LIBERTY GA 8627 EAGLEHAWK JEDDA Z48  
 Dam: LAWSONS RELIANT S1514 LAWSONS MOMENTOUS Q1769 GAR RELIANT GAR SURE FIRE GAR DESTINATION N244 LAWSONS MOMENTOUS M518 LAWSONS DINKY DI E447

June 2023 Trans Tasman Angus Cattle Evaluation									
Calving Ease					Growth and Maternal				
	DIR	DTRS	GL	BWT	200	400	600	MCW	MILK
EBVs	-2.2	-1.2	-3.4	4.8	61	105	136	102	20
Acc	65	58	83	72	71	69	69	70	65
Fertility			Carcase						
	SS	DC	CWT	RIB	RUMP	EMA	RBY	IMF	
EBVs	2.7	-3.9	75	-2.2	-1.7	8.2	0.1	3.7	
Acc	67	44	63	64	64	63	60	66	
	\$GN	312	\$A	226	\$D	179	\$GS	210	



Powerful high growth Enhance son out of a first calving Reliant daughter, great outcross opportunity and both Enhance and Reliant rank in the top 1% for Net Feed Intake (NFI).

**37 LAWSONS RELIANT U1512 AI**

Birth Date: 26/4/23 AM: AMFU NH: NHFU CA: CAFU DD: DDFU  
 Society ID: VLY23U1512 ASA: HBR 50k: Mob: UWABS2 JBAS J-Bas 6  
 GAR SURE FIRE  
 Sire: **GAR RELIANT** CONNEALY IN SURE 8524  
 GAR DESTINATION N244 CHAIR ROCK 5050 GAR 8086  
 B/R DESTINATION 727-928  
 EAGLEHAWK JEDDA Z48  
 AYRVALE BARTEL E7  
 Dam: **LAWSONS BARTEL E7 L60** TE MANIA BARTEL B219  
 LAWSONS TANK E542 LAWSONS NEW DESIGN 1407 Z1486

June 2023 Trans Tasman Angus Cattle Evaluation

Calving Ease		Growth and Maternal								
		DIR	DTRS	GL	BWT	200	400	600	MCW	MILK
EBVs	<b>1.1</b>	<b>1.0</b>	<b>-2.4</b>	<b>4.2</b>	<b>54</b>	<b>94</b>	<b>125</b>	<b>92</b>	<b>21</b>	
Acc	62	55	84	73	72	70	70	69	64	
Fertility		Carcass								
		SS	DC	CWT	RIB	RUMP	EMA	RBV	IMF	
EBVs	<b>1.9</b>	<b>-5.3</b>	<b>73</b>	<b>-1.6</b>	<b>-2.0</b>	<b>8.8</b>	<b>0.9</b>	<b>3.3</b>		
Acc	68	45	64	65	65	64	60	68		
	<b>\$GN</b>	<b>315</b>	<b>\$A</b>	<b>239</b>	<b>\$D</b>	<b>192</b>	<b>\$GS</b>	<b>224</b>		



Reliant is top 1% of the breed for feed efficiency (Net Feed Intake).

**38 LAWSONS VERACIOUS U1617 AI**

Birth Date: 22/3/23 AM: AMFU NH: NHFU CA: CAFU DD: DDFU  
 Society ID: VLY23U1617 ASA: HBR 50k: Mob: UWABS2 JBAS J-Bas 6  
 MILL BRAE IDENTIFIED 4031  
 Sire: **HPCA VERACIOUS** KROUPALS B&B IDENTITY  
 HPCA SUNRISE A246 MILL BRAE PRO BLACKCAP 1092  
 GAR SUNRISE  
 EAGLEHAWK JEDDA Z48  
 GAR MOMENTUM  
 Dam: **LAWSONS MOMENTUM P142** GAR PROGRESS  
 Lawson's Deer Valley All In M1600 GAR BIG EYE 1770  
 DEER VALLEY ALL IN 2138  
 LAWSONS INVINCIBLE G704

June 2023 Trans Tasman Angus Cattle Evaluation

Calving Ease		Growth and Maternal								
		DIR	DTRS	GL	BWT	200	400	600	MCW	MILK
EBVs	<b>3.7</b>	<b>3.2</b>	<b>-0.9</b>	<b>2.1</b>	<b>57</b>	<b>99</b>	<b>124</b>	<b>96</b>	<b>19</b>	
Acc	57	47	83	73	70	68	68	67	59	
Fertility		Carcass								
		SS	DC	CWT	RIB	RUMP	EMA	RBV	IMF	
EBVs	<b>0.3</b>	<b>-2.9</b>	<b>73</b>	<b>-1.0</b>	<b>-1.2</b>	<b>11.3</b>	<b>0.3</b>	<b>4.2</b>		
Acc	65	38	60	62	61	61	56	64		
	<b>\$GN</b>	<b>339</b>	<b>\$A</b>	<b>238</b>	<b>\$D</b>	<b>188</b>	<b>\$GS</b>	<b>219</b>		



U1617 ranks in the top 10% of the breed for Heavy Grain Index (\$GN) and EMA.

**39 LAWSONS VERACIOUS U1624 AI**

Birth Date: 21/3/23 AM: AMFU NH: NHFU CA: CAFU DD: DD3%  
 Society ID: VLY23U1624 ASA: APR 50k: Y Mob: UWABS2 JBAS J-Bas 6  
 MILL BRAE IDENTIFIED 4031  
 Sire: **HPCA VERACIOUS** KROUPALS B&B IDENTITY  
 HPCA SUNRISE A246 MILL BRAE PRO BLACKCAP 1092  
 GAR SUNRISE  
 EAGLEHAWK JEDDA Z48  
 ALLOURA GET CRACKING G10  
 Dam: **LAWSONS GET CRACKING P170** TE MANIA BERKLEY B1  
 LAWSONS MOMENTUM M1733 GAR MOMENTUM  
 LAWSONS NEXT STEP K230

June 2023 Trans Tasman Angus Cattle Evaluation

Calving Ease		Growth and Maternal								
		DIR	DTRS	GL	BWT	200	400	600	MCW	MILK
EBVs	<b>3.0</b>	<b>1.8</b>	<b>-2.7</b>	<b>4.6</b>	<b>60</b>	<b>101</b>	<b>127</b>	<b>106</b>	<b>17</b>	
Acc	56	46	83	73	70	68	68	66	59	
Fertility		Carcass								
		SS	DC	CWT	RIB	RUMP	EMA	RBV	IMF	
EBVs	<b>0.1</b>	<b>-4.9</b>	<b>74</b>	<b>-1.4</b>	<b>-2.0</b>	<b>13.7</b>	<b>0.7</b>	<b>4.3</b>		
Acc	65	37	60	62	61	60	55	63		
	<b>\$GN</b>	<b>364</b>	<b>\$A</b>	<b>264</b>	<b>\$D</b>	<b>213</b>	<b>\$GS</b>	<b>247</b>		



U1624 is the highest Heavy Grain Index (\$GN) bull in the Sale, top 2% of the breed and the #4 ranked for Domestic Index (\$D), top 6% of the breed. This well balanced Veracious son is also the #3 EMA bull in the Sale, top 2% of the breed plus top 10% for IMF.

**▽ 40      LAWSONS VERACIOUS U1654      AI**

Birth Date: 21/3/23      AM: AMFU      NH: NHFU      CA: CAFU      DD: DD7%

Society ID: VLY23U1654      ASA: APR      50k: Y      Mob: UWABS2      JBAS J-Bas 6

Sire: **HPCA VERACIOUS**  
 HPCA SUNRISE A246

Dam: **LAWSONS MONTALTO R1526**  
 LAWSONS GET CRACKING P174

KOUPALS B&B IDENTITY  
 MILL BRAE PRO BLACKCAP 1092  
 GAR SUNRISE  
 EAGLEHAWK JEDDA Z48

TE MANIA BERKLEY B1  
 TE MANIA MITTAGONG H390  
 ALLOURA GET CRACKING G10  
 LAWSONS INCREDIBLE M1751

June 2023 Trans Tasman Angus Cattle Evaluation

		Calving Ease ✓				Growth and Maternal				
		DIR	DTRS	GL	BWT	200	400	600	MCW	MILK
EBVs		<b>4.5</b>	<b>3.9</b>	<b>-1.9</b>	<b>3.9</b>	<b>58</b>	<b>99</b>	<b>126</b>	<b>101</b>	<b>16</b>
Acc		55	45	83	72	69	67	67	66	58
		Fertility				Carcase				
		SS	DC	CWT	RIB	RUMP	EMA	RBV	IMF	
EBVs		<b>1.5</b>	<b>-6.1</b>	<b>72</b>	<b>-1.4</b>	<b>-2.0</b>	<b>12.6</b>	<b>0.6</b>	<b>4.0</b>	
Acc		64	36	59	61	60	60	55	63	
		<b>\$GN</b>	<b>358</b>	<b>\$A</b>	<b>268</b>	<b>\$D</b>	<b>219</b>	<b>\$GS</b>	<b>253</b>	



U1654 is the #3 ranked Heavy Grain Index (\$GN) and Domestic Index (\$D) bull in the Sale, top 2% and top 4% of the breed. U1654 is one of the highest EMA bulls in the Sale, top 4% of the breed.





**Harry Lawson**

0407 101 145

lawsons@lawsonsangus.com.au

**LAWSONSANGUS.COM.AU**