

2023 LAWSONS ANGUS  
VIC AND NSW COMBINED

# SPRING SALE

1PM FRIDAY 22<sup>ND</sup> SEPTEMBER

SALE COMPLEX CLAREMONT, YEA VICTORIA  
AND BOX RANGE, BOOROWA, NSW



LOW  
CARBON  
BEEF

95  
YEARLING  
BULLS

14  
ELITE  
FEMALES



SCIENCE NOT FICTION

LAWSONS  
angus

“THESE SPRING SALE BULLS  
EXCELL ACROSS ALL KEY  
ECONOMIC TRAITS.”

*Harry Lawson*

— HARRY LAWSON





# 2023 SPRING SALE

**65 ANGUS BULLS IN VIC**  
**30 ANGUS BULLS IN NSW**  
**14 ELITE FEMALES**

**95**  
YEARLING  
BULLS

**14**  
ELITE  
FEMALES

**1PM FRIDAY 22<sup>ND</sup> SEPTEMBER**

AT CLAREMONT, 233 COONANS RD  
YEA, VICTORIA AND BOX RANGE,  
BOOROWA, NSW

## SELLING AGENTS



Scott Lord 0407 325 713



## AUCTION INTERFACED WITH



Market Operations (02) 9262 4222  
mktops@auctionsplus.com.au

## LAWSONS ANGUS



### VIC

Harry Lawson 0407 101 145  
lawsons@lawsonsangus.com.au

Michelle Muller 0439 185 819  
muller.m@lawsonsangus.com.au

### NSW

Vince Rheinberger 0428 462 315  
shbeefco@bigpond.com

# WELCOME TO OUR 2023 VICTORIAN AND NSW SPRING SALE



**95 ELITE YEARLING BULLS & 14 REGISTERED/APR FEMALES SELL, AT 1PM FRIDAY 22ND SEPTEMBER 2023, HELD AT “CLAREMONT”, YEA, VICTORIA AND “BOX RANGE”, BOOROWA, NSW.**

THIS YEAR’S BULLS ARE SIRED BY THE WORLD’S LEADING PERFORMANCE ANGUS SIRES.

**The first 65 Lots will be sold through the ring at “Claremont”, Yea and interfaced with AuctionsPlus followed by the 30 NSW bulls and 14 Registered/APR females that Brian Leslie and DLS will auction from Yea.**

The NSW bulls and females are physically located on the at Box Range, Boorowa, NSW owned by Vince and Debbie Rheinberger. These NSW Lots are bred under a long-term co-operator program which are run under the same disciplined genetic and selection systems that we apply across our nucleus and co-operator herds.



Lawsons Rocky R4010 was bred by Vince and Debbie Rheinberger and sold for a national record for a yearling bull at that time selling for \$132,000 to Knowla Angus, Gimandyke Angus, Dunoon Angus, Kelly Angus with semen marketed through Breeder Genetics. Rocky is amongst the best balanced elite carcass bulls in the Angus breed.



The Spring Vic bulls are hitting their straps now after a wet winter and will scrub up well in September!

Videos of the NSW bulls will be available prior to the sale on AuctionsPlus and photos of the NSW bulls are included in this catalogue and on-line on AuctionsPlus and Angus Australia. For those people who cannot make it Sale Day and would like some video or photos of specific Lots please contact either myself or Michelle Muller.

Please note that the NSW bulls have been 50k genomically tested. The ultrasound scan data, 400D weights and scrotal circumference data on both the NSW and Victorian groups has not been analysed at the time we printed this catalogue but will be available sale day. Please check the Angus Australia web site and/or AuctionsPlus prior to the sale for updated EBVs.

## SALE WEIGHT IS NOT AN INDICATION OF GENETIC POTENTIAL!

These Vic spring bulls have been on a tough grazing regime all winter with daily shifts and a 35 day rotation. Our program does involve running large contemporary groups under high stocking pressure, so while we focus our comments mainly on objective data (EBVs) as this is what's important in your selection decisions, it gives us the opportunity to view bulls and large numbers of different sire-lines across multiple contemporary groups on a daily basis. This also gives us a strong feel and

understanding for important traits like temperament, structure and conformation. As an example, we culled two bulls out of the spring sale group on temperament after observations in daily shifts and putting the bulls under pressure in the yards. In addition all bulls need to pass a structural soundness and semen test before the sale day.

## NO ONE BENDS IT LIKE A LAWSONS ANGUS BULL

### YEARLING BULLS ARE A FANTASTIC OPTION FOR MOST BREEDERS ACROSS AUSTRALIA.

Access to the latest genetics earlier, more calves over a bulls lifetime, greater bull longevity, and more cost-effective genetic gain are just a few benefits of using yearling bulls. Through Lawsons Angus unique "double curve-bender" program bulls provide genetic gain across all key economic traits, so these yearling bulls are way beyond what was once termed a "heifer-bull" that was single focused on calving ease. No other bulls come near the curve bending attributes of these sale bulls with DIRECT CALVING Ease (DIR) of +3.3, Birth Weight +3.3 to +97 on 400D and +120 on 600D and a well below average +90 on Mature Cow Weight (MCW).

**Take a look at the graph on the following pages to see the potential.**

# BULLS THAT SELL

CODE	SIRE	VIC PROGENY	NSW PROGENY	TOTAL PROGENY
HT	GAR HOME TOWN	34	10	44
AB	SC ABUNDANCE 42F	6	4	10
ASH	GAR ASHLAND	6		6
Q33	MOONGENILLA QUINELLA Q33	5	13	18
M0518	LAWSONS MOMENTOUS M518	3	2	5
R4010	LAWSONS ROCKY R4010	3		3
TR	GAR TRANSCENDENT	2		2
Q0044	LAWSONS MIRACULOUS Q44		1	1
ENH	SYDGEN ENHANCE	3		3
RL	GAR RELIANT	3		3
DT	GAR DUAL THREAT		1	1
<b>TOTAL</b>		<b>65</b>	<b>31</b>	<b>96</b>

## WE DON'T USE MANY SIRES, JUST BREED LOTS OF BULLS AND HEIFERS BY A FEW GOOD ONES!

These Sale bulls are the highest ranked bulls to be sold this spring for both Heavy Grain Index (\$GN), averaging in the top 5% of the breed across Australia and New Zealand for \$GN and the top 6% for Angus Breeding Index (\$A) with outstanding carcase traits; top 10% for marbling (IMF) and Eye Muscle Area (EMA).

Calving ease is also one of the single most important traits for any beef producer from both an animal welfare and economic perspective. We do our utmost best to provide our clients with the most accurate and up to date advice on calving ease suitability of our bulls. Anything that has a calving ease tick ✓ we are extremely confident is suitable for heifers and in this catalogue there are 78/87 (90%) rock-solid calving ease bulls.

Our spring sale is the first offering of Moogenilla Quinella Q33, an outstanding GAR fail safe son. We used Q33 heavily over the past two breeding seasons and we felt his growth curve and carcase attributes were hard to match, top 1-2% on all major Indexes and a good outcross pedigree for us without compromising on our key breeding objectives. Q33's progeny are extremely thick, stout and you will see lots more over the next couple of years.



Moogenilla Quinella Q33 is a good match to our maternal herd, rapid early growth without blowing out cow size, excellent carcase traits and top 1-2% across all major Indexes. Progeny are wide-topped, deep-flanked and impressive conformation and an ideal outcross for most of our clients. Lots to come over the next two years!

This sale also includes another outstanding group of GAR Home Town sons as this super sire continues to make big waves across the global Angus population.



Home Town's his elite proven genetic predictions for calving ease, growth, stature, feed efficiency end product excellence and maternal function are in the most unique combination ever seen in an Angus sire.

Other main sire groups include GAR Ashland, GAR Transcendent, Lawsons Rocky R4010, Lawsons Momentous M518, GAR Reliant, Lawsons Miraculous Q44, Sydgen Enhance and GAR Dual Threat.



**SALE BULLS RANK AT THE TOP END OF THE ANGUS BREED ON MANY LEVELS INCLUDING:**

	\$GN	\$A	\$D	\$GS	DIR	BWT	600	MCW	EMA	IMF
<b>Spring Sale Average</b>	<b>336</b>	<b>248</b>	<b>203</b>	<b>232</b>	<b>3.3</b>	<b>3.3</b>	<b>120</b>	<b>90</b>	<b>10.9</b>	<b>4.1</b>
Percentile Ranking	5%	6%	8%	8%	45%	35%	40%	65%	10%	10%
Angus Breed Average	<b>259</b>	<b>197</b>	<b>163</b>	<b>181</b>	<b>2.2</b>	<b>4</b>	<b>117</b>	<b>100</b>	<b>6.3</b>	<b>2.2</b>

Lots 96-109 are 14 HBR/APR registered females selling PTIC to elite sires GAR Home Town, Lawsons Rocky R4010 and Moogenilla Quinella Q33 and are due to calve March/April 2024. No follow up bulls were used on these females last spring and they are genuine elite females sold PTIC to AI with no follow up cover bulls.

Once again we will offer free freight between NSW and Victoria sale centres. Please note our spring sale does not include free delivery but we do try and deliver some bulls and will assist buyers to get them to you as cost effectively as we can. Please feel free to discuss with us prior to the sale if you have any queries.

Many thanks to our dedicated team of staff in Victoria and NSW that do a lot of hard yards over the year in caring for our animals keeping and our production system on track.

Thanks to our clients who keep us challenged and focused and continue to support our business.

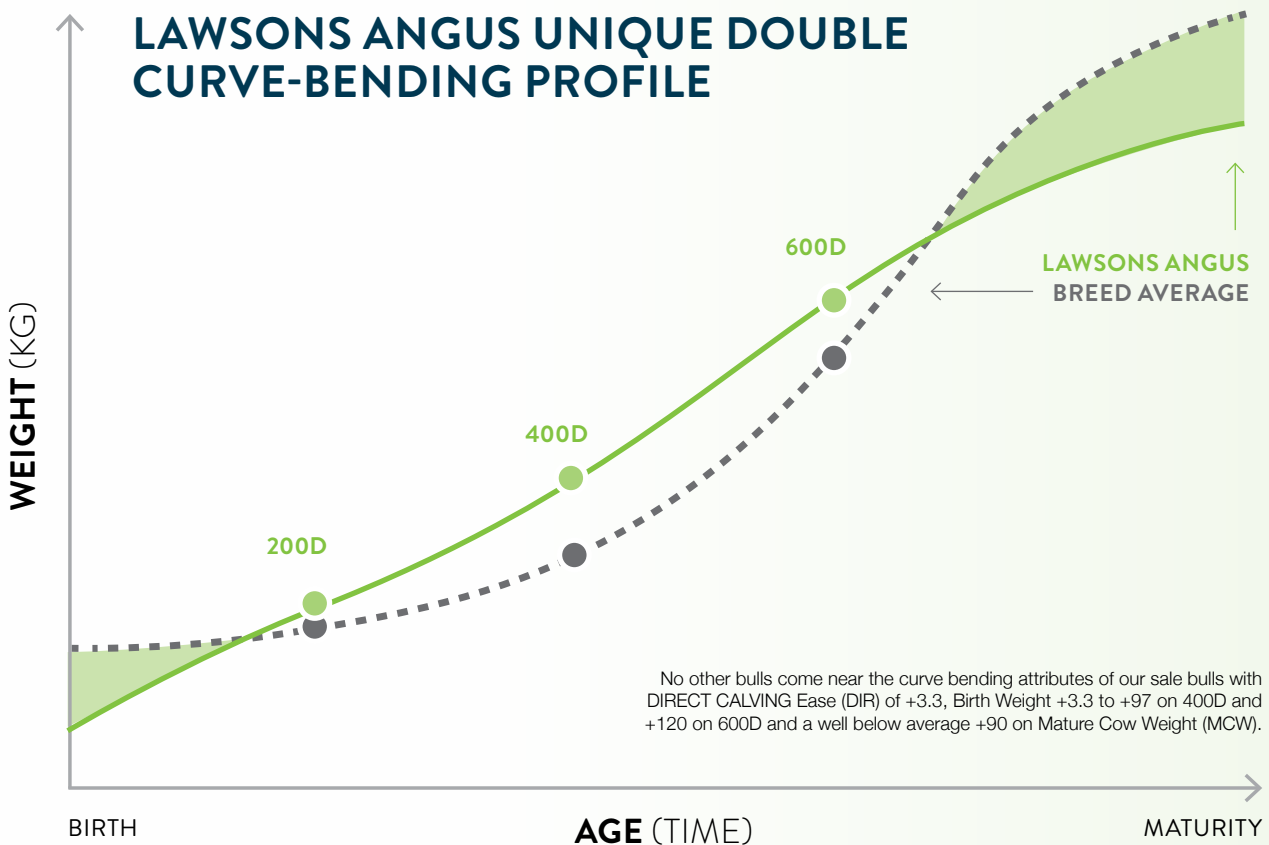
**We look forward to seeing you all on sale day or before for those people that would like to inspect bulls in Vic or NSW prior to the Sale.**

Regards,

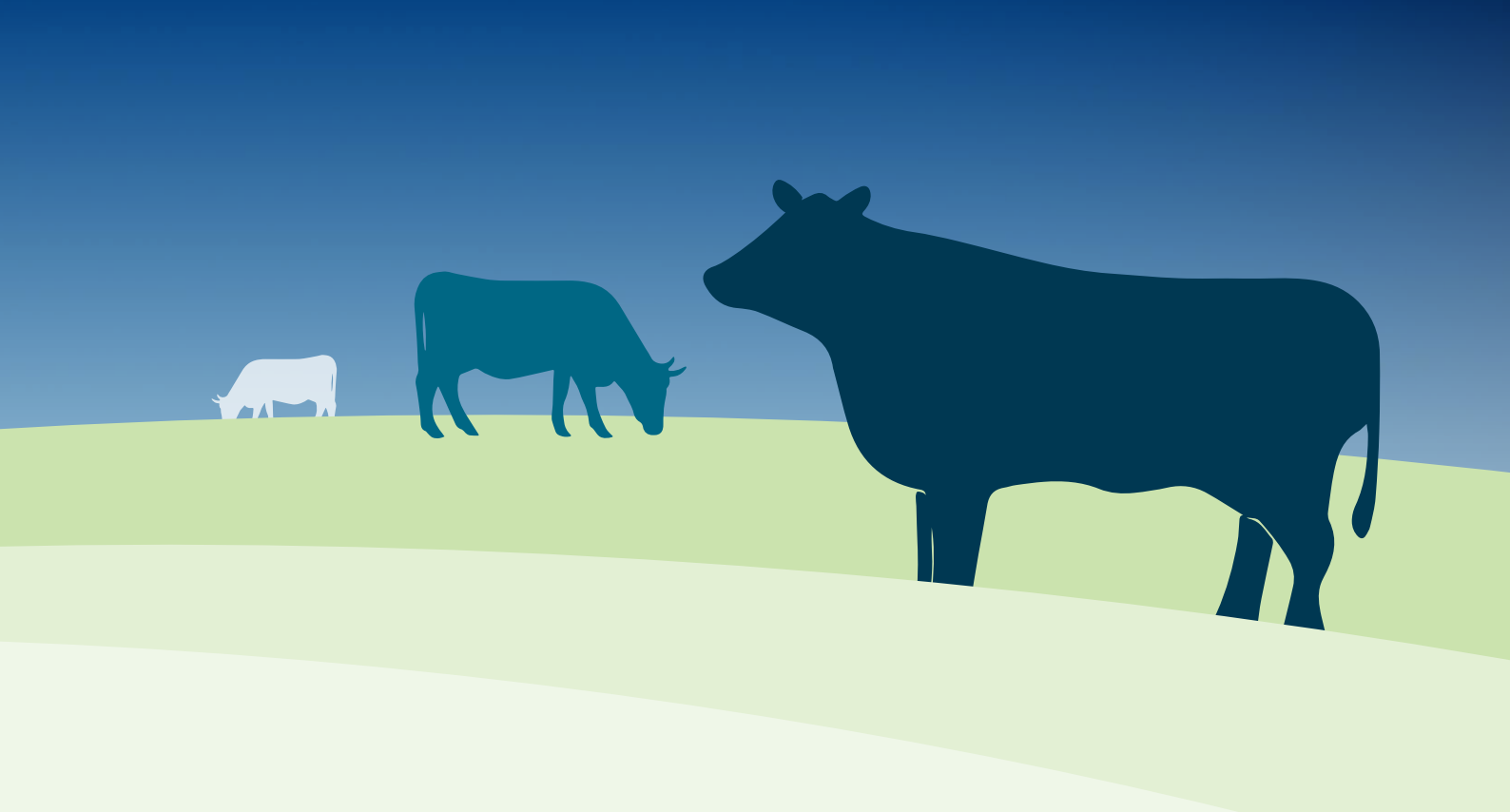
Harry Lawson

# NO ONE BENDS IT LIKE A **LAWSONS** **ANGUS BULL**

IN EVERY MATING AT LAWSONS ANGUS THERE IS A FOCUS ON BIRTH WEIGHT (CALVING EASE), GROWTH AND COW SIZE (MCW). OUR BULLS HAVE A MASSIVE GENETIC ADVANTAGE IN THEIR ABILITY TO BEND THE GROWTH CURVE AT BOTH ENDS. NO ONE BENDS THAT CURVE LIKE A LAWSONS ANGUS BULL!







## A LOWER COST, MORE EFFICIENT HERD

Retaining a high proportion of your heifers is a key element to making genetic progress. In order to do this you need to be confident firstly that each year you breed a better 'model' and also that you can confidently calve down a large group of heifers without the stress and economic loss of calving problems (dystocia).

Birth weight is moderately correlated with growth, therefore if we single trait selected for growth we would expect birth weights to increase over time significantly increasing the risk of calving problems associated with higher birth weights. Calving ease is the number one animal welfare trait and as many of our bulls are used over heifers our first priority is always to ensure we provide reliable, predictable information that basically eliminates dystocia.

Around 90% of our bulls are in the optimal zone for calving ease. By weighing calves and submitting data to the global database we find what is referred to as "outliers", which are animals that defy the correlation (i.e. are moderate Birth Weight and still above average or high growth).

## BALANCING GROWTH AND COW SIZE

The Angus breed has become fixated on growth, this has created what we refer to as "cow size creep". As we increase growth we generally see an increase in mature cow size and associated with this is later maturing, later puberty heifers. The challenge for us is then to find the "outliers" that defy the norm and give us the trifecta of calving ease, high growth and moderate mature size/maturity pattern. These animals that defy both antagonisms at either end of the lifetime growth curve are what we call "double curve-benders". The progressive, performance-minded Angus breeders started routinely weighing cows and submitting these weights to Breedplan in the mid-2000's.

We use the information on these key traits from both Australia TACE and the US Angus population. We also continue to contribute to this data by weighing and measuring animals in large contemporary groups in order help identify these true outliers in the breed which excel in our multi-trait criteria.

On-farm productivity and lowering emissions intensity should be our priority for future farming practices. It is possible not to go broke while trying to reduce your carbon footprint! We need to consider the key drivers of both farming profitably and methane emissions.

**The most important and best way to reduce your carbon footprint (as defined by emissions intensity) is to keep your cows moderate and ensure fertility remains your priority.**

Lawsons Angus are one of the only large scale Australian seedstock herds that is below average on Mature Cow Weight (MCW). The reason we place so much emphasis on MCW and on keeping our cows moderate is we believe that MCW is the biggest driver of feed costs, fertility, drought tolerance, post-partum anoestrus period (PPAI) and an animals carbon footprint.

**The Angus breed are the dominant breed for two main reasons, maternal efficiency and eating quality. We need to remain focused on what we do well as a breed and keep marching forward.**

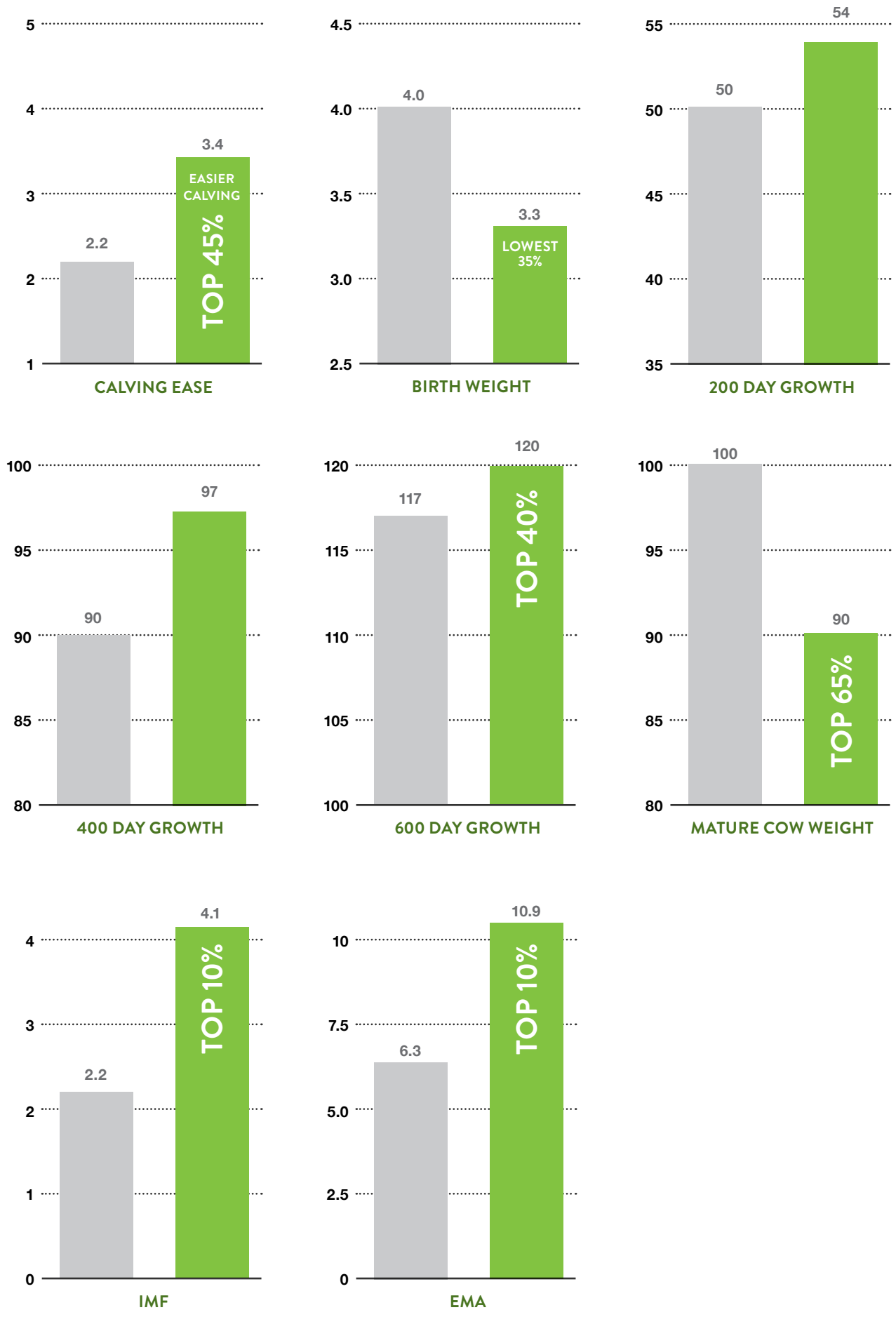


# HOW DO LAWSONS ANGUS SPRING BULLS COMPARE WITH THE ANGUS BREED AVERAGE?



■ Lawson's 2023 Sale bulls
 ■ Breed average

Lawsons 2023 Spring Sale bulls      Breed average



# REFERENCE SIREs

Breedplan EBVs sourced from Angus  
Australia, August 2023

1 GAR HOME TOWN																		SIRE GAR ASHLAND				MGS GAR SURE FIRE									
Birth Date:	6/9/18			ASA ID:	USA19266718			ASA Status:	HBR			AM Status:	AMF			NH Status:	NHF			CA Status:	CAF			DD Status:	DDF			<b>\$INDEX VALUE</b>			
	Calving Ease			Growth and Maternal						Fertility						Carcase						\$GN	\$D	\$A	\$GS						
	DIR	DTRS	GL	BWT	200	400	600	MCW	MILK	SS	DC	CWT	RIB	RUMP	EMA	RBY	IMF														
EBVs	6.8	4.5	-6.8	2.3	59	102	119	81	15	1.4	-4.8	72	-2.8	-5.0	14.7	1.1	5.1														
Acc	81	60	99	99	98	98	97	90	84	97	51	88	87	85	90	82	89	394	286	240	270										

2 SC ABUNDANCE 42F																		SIRE GAR ASHLAND				MGS GAR PROPHET									
Birth Date:	9/9/18			ASA ID:	USA19388669			ASA Status:	HBR			AM Status:	AMF			NH Status:	NHF			CA Status:	CAF			DD Status:	DDF			<b>\$INDEX VALUE</b>			
	Calving Ease			Growth and Maternal						Fertility						Carcase						\$GN	\$D	\$A	\$GS						
	DIR	DTRS	GL	BWT	200	400	600	MCW	MILK	SS	DC	CWT	RIB	RUMP	EMA	RBY	IMF														
EBVs	4.6	3.7	-7.8	3.4	64	108	133	102	21	0.9	-3.5	73	-0.9	-1.4	13.2	0.6	3.5														
Acc	72	57	97	96	93	92	86	82	78	78	43	82	74	71	77	68	78	371	265	215	246										

3 GAR ASHLAND																		SIRE GAR EARLY BIRD				MGS B/R AMBUSH 28									
Birth Date:	31/1/15			ASA ID:	USA18217198			ASA Status:	HBR			AM Status:	AMF			NH Status:	NHF			CA Status:	CAF			DD Status:	DDF			<b>\$INDEX VALUE</b>			
	Calving Ease			Growth and Maternal						Fertility						Carcase						\$GN	\$D	\$A	\$GS						
	DIR	DTRS	GL	BWT	200	400	600	MCW	MILK	SS	DC	CWT	RIB	RUMP	EMA	RBY	IMF														
EBVs	1.1	1.0	-6.5	3.4	68	117	148	124	18	1.4	-3.0	81	-3.0	-3.2	13.1	1.2	3.1														
Acc	94	80	99	99	99	99	99	97	96	98	55	94	92	91	92	87	92	358	260	213	242										

4 MOONGENILLA QUINELLA Q33																		SIRE GAR FAIL SAFE				MGS EF COMPLEMENT 8088									
Birth Date:	8/7/19			ASA ID:	BWFQ33			ASA Status:	HBR			AM Status:	AMF			NH Status:	NHF			CA Status:	CAF			DD Status:	DDF			<b>\$INDEX VALUE</b>			
	Calving Ease			Growth and Maternal						Fertility						Carcase						\$GN	\$D	\$A	\$GS						
	DIR	DTRS	GL	BWT	200	400	600	MCW	MILK	SS	DC	CWT	RIB	RUMP	EMA	RBY	IMF														
EBVs	0.6	9.5	-6.0	4.1	59	116	144	84	25	2.7	-3.9	94	-1.0	-0.5	11.6	0.1	4.4														
Acc	77	58	98	98	97	95	86	81	71	91	47	77	75	75	74	70	75	380	276	226	266										

5 LAWSONS MOMENTOUS M518																		SIRE GAR MOMENTUM				MGS TE MANIA AFRICA A217									
Birth Date:	30/6/16			ASA ID:	VLYM518			ASA Status:	HBR			AM Status:	AMF			NH Status:	NHF			CA Status:	CAF			DD Status:	DDF			<b>\$INDEX VALUE</b>			
	Calving Ease			Growth and Maternal						Fertility						Carcase						\$GN	\$D	\$A	\$GS						
	DIR	DTRS	GL	BWT	200	400	600	MCW	MILK	SS	DC	CWT	RIB	RUMP	EMA	RBY	IMF														
EBVs	-3.3	-4.3	-5.9	4.1	51	94	113	85	23	2.6	-3.0	50	-0.9	-0.7	13.6	0.6	5.8														
Acc	96	83	99	99	99	99	99	98	97	99	72	96	94	94	94	91	94	331	226	177	212										

6 LAWSONS ROCKY R4010																		SIRE GAR MOMENTUM				MGS PARINGA JUDD J5									
Birth Date:	23/8/20			ASA ID:	VLYR4010			ASA Status:	HBR			AM Status:	AMF			NH Status:	NHF			CA Status:	CAF			DD Status:	DDF			<b>\$INDEX VALUE</b>			
	Calving Ease			Growth and Maternal						Fertility						Carcase						\$GN	\$D	\$A	\$GS						
	DIR	DTRS	GL	BWT	200	400	600	MCW	MILK	SS	DC	CWT	RIB	RUMP	EMA	RBY	IMF														
EBVs	4.6	2.9	-5.7	2.7	55	97	125	96	24	2.7	-4.2	68	1.2	0.5	12.1	-0.1	5.5														
Acc	73	59	98	98	96	88	84	80	70	80	49	76	69	69	66	63	70	357	250	192	239										

7 GAR TRANSCENDENT																		SIRE GAR MOMENTUM				MGS GAR PROPHET									
Birth Date:	9/8/19			ASA ID:	USA19570738			ASA Status:	HBR			AM Status:	AMF			NH Status:	NHF			CA Status:	CAF			DD Status:	DDF			<b>\$INDEX VALUE</b>			
	Calving Ease			Growth and Maternal						Fertility						Carcase						\$GN	\$D	\$A	\$GS						
	DIR	DTRS	GL	BWT	200	400	600	MCW	MILK	SS	DC	CWT	RIB	RUMP	EMA	RBY	IMF														
EBVs	0.7	2.8	-5.9	3.8	58	102	129	109	16	-0.5	-4.0	70	-1.1	-3.0	10.7	-0.2	6.6														
Acc	70	57	96	95	91	88	85	83	81	80	50	83	77	73	80	73	83	356	245	189	230										

8 LAWSONS MIRACULOUS Q44																		SIRE LAWSONS MOMENTOUS M518				MGS GAR ANTICIPATION 7261											
Birth Date:		6/3/19			ASA ID:		VLYQ44			ASA Status:		HBR		AM Status:		NHF		NH Status:		CAF		CA Status:		AMF		DD Status:		DDF		\$INDEX VALUE			
Calving Ease				Growth and Maternal						Fertility				Carcase																			
DIR DTRS GL BWT				200 400 600		MCW MILK SS DC		CWT RIB RUMP		EMA RBY IMF																							
EBVs	3.8	-0.7	-7.8	3.3	49	91	111	99	11	2.6	-4.1	49	1.0	0.5	21.5	2.0	2.5	\$GN	\$D	\$A	\$GS	329	248	208	234								
Acc	72	57	97	95	91	91	88	82	71	87	49	77	77	77	76	72	77																

9 SYDGEN ENHANCE																		SIRE SYDGEN EXCEED 3223				MGS SYDGEN LIBERTY GA 8627											
Birth Date:		27/1/15			ASA ID:		USA18170041			ASA Status:		HBR		AM Status:		AMF		NH Status:		NHF		CA Status:		CAF		DD Status:		DDF		\$INDEX VALUE			
Calving Ease				Growth and Maternal						Fertility				Carcase																			
DIR DTRS GL BWT				200 400 600		MCW MILK SS DC		CWT RIB RUMP		EMA RBY IMF																							
EBVs	5.6	-1.2	-3.7	3.2	59	108	142	106	18	2.9	-3.0	75	-2.2	-1.7	7.7	0.0	3.2	\$GN	\$D	\$A	\$GS	306	224	177	209								
Acc	95	83	99	99	99	99	99	98	97	98	62	94	93	92	92	89	92																

10 GAR RELIANT																		SIRE GAR SURE FIRE				MGS B/R DESTINATION 727-928											
Birth Date:		19/8/16			ASA ID:		USA18669357			ASA Status:		HBR		AM Status:		AMF		NH Status:		NHF		CA Status:		CAF		DD Status:		DDF		\$INDEX VALUE			
Calving Ease				Growth and Maternal						Fertility				Carcase																			
DIR DTRS GL BWT				200 400 600		MCW MILK SS DC		CWT RIB RUMP		EMA RBY IMF																							
EBVs	0.4	-1.9	-3.7	4.5	60	109	136	105	21	2.0	-4.4	85	-3.2	-4.8	8.7	0.9	3.2	\$GN	\$D	\$A	\$GS	314	236	198	218								
Acc	77	60	98	98	96	96	95	88	80	94	56	85	84	82	86	79	86																

11 GAR DUAL THREAT																		SIRE GA SURE FIRE				MGS MCC DAYBREAK											
Birth Date:		3/9/17			ASA ID:		USA19123898			ASA Status:		HBR		AM Status:		AMF		NH Status:		NHF		CA Status:		CAF		DD Status:		DDF		\$INDEX VALUE			
Calving Ease				Growth and Maternal						Fertility				Carcase																			
DIR DTRS GL BWT				200 400 600		MCW MILK SS DC		CWT RIB RUMP		EMA RBY IMF																							
EBVs	9.8	3.9	-4.5	1.8	56	109	128	91	21	2.4	-7.2	80	0.5	0.4	15.0	1.2	2.9	\$GN	\$D	\$A	\$GS	395	302	264	289								
Acc	72	55	96	95	92	86	84	82	78	79	48	81	75	72	78	71	81																

2023 SPRING SALE BULL AVERAGE																				
DIR	DTRS	GL	BWT	200	400	600	MCW	MILK	SS	DC	CWT	RIB	RUMP	EMA	RBY	IMF	\$GN	\$A	\$D	\$GS
2.2	2.6	-4.8	4.0	50	90	117	100	17	2.1	-4.7	66	0.0	-0.3	6.3	0.5	2.2	259	197	163	181

# REFERENCE SIRES



**GAR HOMETOWN**

Home Town is your next step in the pursuit for multi-trait excellence! Home Town sold for a record US\$475,000 in the GAR 2020 Spring Sale and is marketed through Select Sires and World Wide Sires. Home Town progeny are truly unique for calving ease, early growth, stature, maternal function and elite end-product value.



**SC ABUNDANCE 42F**

Abundance is an Ashland son that combines exceptional calving ease, high growth and moderate maturity pattern backed up by his curve-bending EBVs and massive muscle and marbling combination. Abundance is a rock-solid calving ease bull that will shine through at weaning and every part of the supply chain - a combination of key traits for beef producers that very few sires can match!



**GAR ASHLAND**

GAR Ashland is a good outcross and one of the high use sires across the US and Australia. Visually attractive and unmatched in his combination of calving ease, growth, marbling and muscle. No other sire we have used has this much muscle in such a stout, moderate frame. Ashland is also the sire of GAR Home Town, GAR Kansas and SC Abundance 42F.



**MOONGENILLA QUINELLA Q33**

Moogenilla Quinella Q33 is a good match to our maternal herd, rapid early growth without blowing out cow size, excellent carcass traits and top 1-2% across all major Indexes. Progeny are wide-topped, deep-flanked and impressive conformation and an ideal outcross.



**LAWSONS MOMENTOUS M518**

Still hard to beat and has had a major impact on the Angus breed in Australia. Momentous is amongst the highest proven carcass sires in the Angus breed a +5.8 IMF, top 1% plus his EMA is +13.6, top 2% of the breed! No other sire in the Angus breed matches Momentous for muscle and marbling. Momentous bull calves have been breaking records across Australia, we have over 1,355 of his 4,376 registered calves in our program giving you the power numbers to select from with superior genetics at an affordable price. It was pleasing to see his spread between 600D and Mature Cow Weight (MCW) widen with his MCW now +85 and well below breed average of +100. Apart from Momentous unmatched multi-trait excellence his calves are wide-topped, thick set with exceptional docility and structure. We now have 4-year-old Momentous cows in the herd doing a superb job and many sons in this sale are out of Momentous daughters.



**LAWSONS ROCKY R4010**

Lawsons Rocky R4010 was sold for a national record for a yearling bull at that time selling for \$132,000 to Knowla Angus, Gimandyke Angus, Dunoon Angus, Kelly Angus with semen marketed through Breeder Genetics. Rocky is amongst the best balanced elite carcass bulls in the Angus breed - exceptional growth curve and unmatched marbling and muscle combination makes Rocky one of the most sought after bulls today in the Angus breed.



**GAR TRANSCENDENT**

Like no other bull in history, Transcendent takes carcass quality to a whole new level with his +6.6 IMF and >10 EMA. Breeding GAR Transcendent to a breed-average marbling female lands the calf in the top 6% of the breed. Equally importantly he does it in a well-balanced way with multi-trait excellence - calving ease, rapid early growth & moderate mature size are critical in today's farming environment. Transcendent's sire and MGS (Momentum and Prophet) have over 400 actual carcass records between them. There's a reason why bulls like this one rise to the top.



**SYDGEN ENHANCE**

Sydgen Enhance is most widely used Angus bulls in the US and Australia over the past five years. Enhance offers a well balanced outcross option, superb growth curve and soundness from a well recognised maternal herd in the US. Enhance is also top 1% of the breed for Net Feed Intake and will play an important role as we move the bell curve for NFI over the next stage in our breeding program. We have recently purchased the Australian semen rights on New Zealand bred Enhance son, Kakahu S132.



**GAR DUAL THREAT**

GAR Dual Threat's combination of pedigree, performance and phenotype along with his massive EMA makes him very appealing on many fronts. Phenomenal calving ease and double curve-bending attributes help provide that extra horsepower without blowing out cow size. Used widely with great success at Gardiner Angus Ranch.



**LAWSONS MIRACULOUS Q44**

A game changing sire in terms of calving ease, muscle and feed efficiency! Lawsons Miraculous Q44 is the highest HBR sire in the Angus breed for Eye Muscle Area (EMA) at +21.5 and his progeny are visually wide-topped, stout with impressive performance and feed efficiency. Miraculous was one of the highest feed efficiency tested bulls in Cohort #4, being above average for every metric including Net Feed Intake (NFI) and his progeny have backed up with impressive feed efficiency data. Q44 was the top selling bull in our spring 2020 Sale, purchased by TRT Pastoral in King Island. Semen is marketed through Genetics Australia.



**GAR RELIANT**

Reliant blows you away with his impressive phenotype, powerful design and gentle disposition. Stacked with maternal strength and feed efficiency with Sure Fire, B/R Destination 727-928 and goes back to one of our all time favourites and big time "influencers" GAR Predestined.

# SIREMATE™

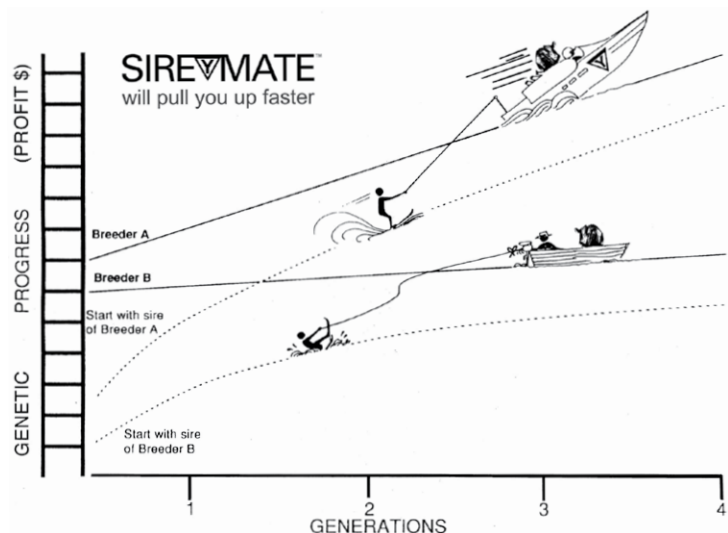
# OPTIONS IN PRACTICE

SIRE GROUP A New Design Line	SIRE GROUP B Precision Line	SIRE GROUP C Focus Line	SIRE GROUP D Ambassador Line	SIRE GROUP E Objective Line
GAR Ingenuity B/R New Design 036 Ythanbrae Henry VIII Bon View New Design 1407 GAR Prime Design Ythanbrae New Design 036 U84 Ythanbrae True Blue N33 VDAR New Trend 315 Bon View New Design 208 Perry Power Design 715 GAR Integrity GAR Casper GAR Authority GAR Predestined Lawsons GAR Fairdinkum Z197 Rito 2V1 of 2536 1407 TC Total 410 Lawsons Dinky-Di Z191 GAR New Design 5050 Lawsons King Island Beef Z1292 Lawsons Romeo A754 Thomas Grade Up Rito 4L6 of 2536 208 Lawsons Novak E313 Rennylea C511 GAR Progress GAR Momentum GAR Method Momentous M518 Lawsons Miraculous Q44 Lawsons Rocky R4010 Gar Transcendent	GAR Precision 1680 GAR Paramount 8908 GAR Pinnacle 7708 GAR Everest 9409 CA Future Direction GAR Yield Grade Ythanbrae GAR Precision U28 'Calculator' Ythanbrae GAR Precision V527 Lawsons Buckshot X410 Lawsons Tank X1235 Ardrossan Direction X3 GAR US Premium Beef GAR Retail Product Lawsons High Grade Z440 Ardrossan Admiral A2 GAR Right Direction Lawsons Swagman A179 Lawsons Tank B1155 Lawsons Ironstone B1370 Alloura Get Cracking G10	GAR Sure Fire Lawsons NZ09104 GAR Pheonix Moongenilla Quinella Q33 Gar Reliant Gar Dual Threat	Tuwharetoa Regent D145 Topbos Ambassador F4 Storth Oaks D21 Paringa Judd J5	SS Objective T510 0T26 GAR Selective GAR Ultimate GAR Efficiency Rito Revolution SS Traveler 6807 T510 GAR Solution Lawsons Invincible C402 HPCA Intensity 7102 GAR Index
Column A daughters sire group can me mated to all other sire groups	Column B daughters sire group can me mated to all other sire groups	Column C daughters sire group can me mated to all other sire groups	Column D daughters sire group can me mated to all other sire groups	Column E daughters sire group can me mated to all other sire groups

## DEVELOP YOUR OWN SIMPLE 10 YEAR PLAN

Using Lawsons Angus genetics will provide a highly predictable path to keeping you a decade ahead of the average Angus breeder.

**Lawsons Angus breeding program is built on multiplying the best bulls available in the world. Sire-Mate helps breeders develop a simple, but still flexible mating plan that minimises inbreeding and maximises genetic gain.**

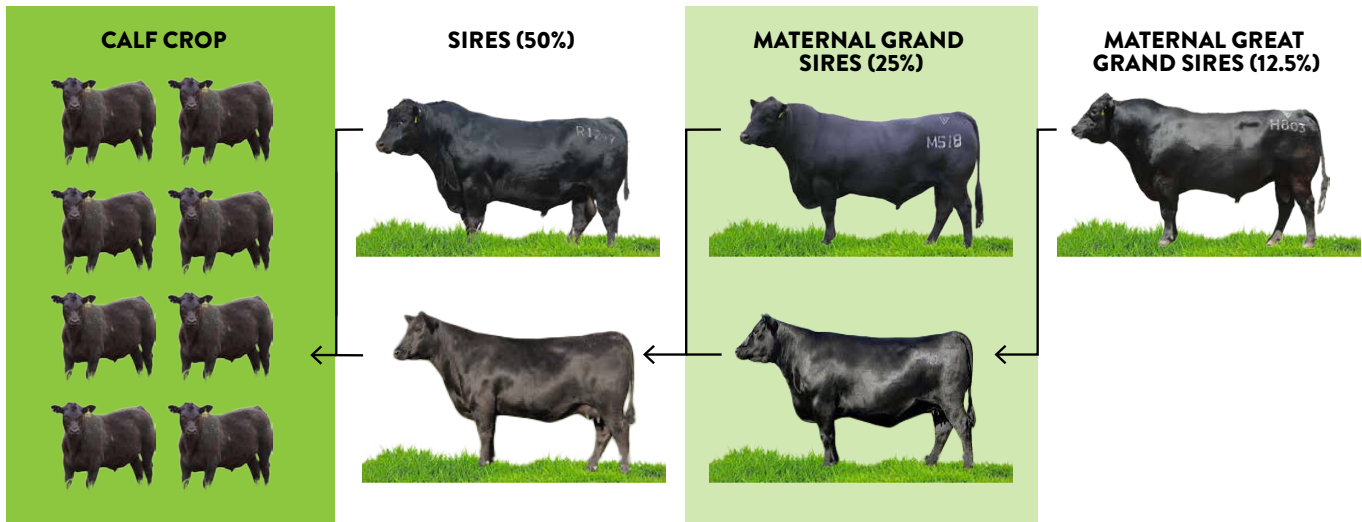






SIRE GROUP F Bartel Line	SIRE GROUP G Prophet Line	SIRE GROUP H Ashland Line	SIRE GROUP I Other Sires
Ayrvale Bartel E7 Ayrvale Bartel E8 Dunoon Evident E614 Lawsons Incredible H803 Lawsons Hugo H653 Lawsons Harvard H205	GAR Prophet GAR Prophecy GAR Relevance	GAR Ashland GAR Home Town SC ABUNDANCE 42F	RockN D Ambush 1531 B/R Ambush 28 Lawsons Payload X951 GAR Grid Maker GAR Payload 3674 GAR Evas Convergence 3403 GAR Evas Consistence 3803 GT Sentry Bon View Spectrum 1176 N Bar Prime Time D806 BT Ultravox 297E BCC Bushwacker 41-93 Connealy Lead On Gardens High Mark Tehama Schwarzenegger N600 Ironwood New Level Ythanbrae Pono V346 Wilson Downs Equator V191 Te Mania Africa Lawsons Harry H234 Rennylea Edmund E11 Sydgen Trust 6228 Leachman Resolution GAR-EGL Protege B/R New Day 454 Broken Bow 002 GAR Anticipation GAR Sunrise Sydgen Enhance
Column F daughters sire group can me mated to all other sire groups	Column G daughters sire group can me mated to all other sire groups	Column H daughters sire group can me mated to all other sire groups	Column I daughters sire group can me mated to all other sire groups

**!** 87% OF GENETIC COMPOSITION OF CALF CROP IS DETERMINED BY THE SIRES USED OVER THE LAST 3 GENERATIONS.



# 2023 SPRING SALE BULLS

## GROUP BREEDPLAN EBVs

														CALVING EASE				
Lot #	Tag No	Pen	Sire	Dam	MGS	Birth Date	Mob	50K	ASA Status	AM Status	NH Status	CA Status	DD Status	CE TICK	DIR	DTRS	GL	BWT
<b>VIC</b>																		
1	T5185	1	HT	R5082	J5	3/8/22	TLARB		HBR	AMFU	NHFU	CAFU	DD3%	✓	6.5	2.7	-4.6	3.0
2	T5147	1	HT	L1097	H0803	12/8/22	TLARB		HBR	AMFU	NHFU	CAFU	DD1%	✓	6.9	3.7	-7.9	3.0
3	T5101	1	ASH	Q5215	PROP	5/9/22	TLARB		HBR	AMFU	NHFU	CAFU	DDFU	✓	1.8	3.0	-2.6	3.6
4	T5080	1	HT	Q5056	MON	9/8/22	TLARB		HBR	AMFU	NHFU	CAFU	DDFU	✓	5.7	3.7	-6.3	4.2
5	T5128	1	HT	P5083	J5	8/8/22	TLARB		APR	AMFU	NH8%	CAFU	DD1%	✓	5.0	2.1	-5.4	4.2
6	T5022	1	Q33	P5179	J5	29/8/22	TLARB		HBR	AMFU	NHFU	CAFU	DDFU	✓	4.0	6.7	-2.6	3.3
7	T5159	1	HT	N1114	PROP	16/8/22	TLARB		HBR	AM4%	NHFU	CAFU	DDFU	✓	8.6	7.1	-5.6	1.1
8	T5195	1	AB	R5206	M0518	4/8/22	TLARB		HBR	AMFU	NHFU	CAFU	DDFU	✓	0.7	0.1	-4.5	4.5
9	T5011	1	HT	P5173	G10	7/8/22	TLARB		HBR	AMFU	NHFU	CAFU	DD3%	✓	4.0	3.7	-5.9	4.7
10	T5050	1	HT	P5136	MM	8/8/22	TLARB		HBR	AMFU	NHFU	CAFU	DD3%	✓	5.0	1.2	-5.5	2.5
11	T5049	2	HT	Q5220	M0518	8/8/22	TLARB		APR	AMFU	NH8%	CAFU	DD1%	✓	3.9	2.8	-6.8	3.6
12	T5036	2	HT	Q5186	M0518	10/8/22	TLARB		HBR	AMFU	NHFU	CAFU	DDFU	✓	2.6	-1.1	-6.7	4.3
13	T5114	2	ASH	Q5068	M0518	2/8/22	TLARB		APR	AMFU	NHFU	CAFU	DDFU	✓	2.9	1.3	-8.7	3.8
14	T5239	2	HT	R5208	M0518	6/8/22	TLARB		APR	AMFU	NHFU	CAFU	DDFU	✓	3.1	2.3	-3.2	2.8
15	T5158	2	R4010	N1150	SF	15/8/22	TLARB		HBR	AMFU	NHFU	CAFU	DDFU	✓	6.5	3.4	-4.5	2.2
16	T5173	2	HT	N1129	J5	22/8/22	TLARB		APR	AMFU	NHFU	CAFU	DD17%	✓	4.1	1.2	-2.4	3.4
17	T5077	2	HT	Q5021	M0518	8/8/22	TLARB		HBR	AMFU	NHFU	CAFU	DDFU	✓	3.1	2.4	-7.0	3.3
18	T5180	2	M0518	R5116	ASH	6/8/22	TLARB		HBR	AMFU	NHFU	CAFU	DD2%		-4.4	-1.7	-4.0	5.5
19	T5042	2	HT	P5227	L0483	15/8/22	TLARB		APR	AM4%	NH2%	CAFU	DD3%	✓	1.9	-1.6	-1.4	4.4
20	T5155	2	RL	L1094	J5	18/8/22	TLARB		HBR	AMFU	NHFU	CAFU	DD4%	✓	6.1	1.2	-3.5	1.9
21	T5086	3	HT	Q5066	MON	8/8/22	TLARB		HBR	AMFU	NHFU	CAFU	DDFU	✓	8.0	5.1	-6.6	2.6
22	T5201	3	HT	R5207	MON	22/8/22	TLARB		HBR	AMFU	NHFU	CAFU	DDFU	✓	4.6	3.6	-5.6	4.3
23	T5200	3	HT	R5196	IDX	20/8/22	TLARB		HBR	AMFU	NHFU	CAFU	DDFU	✓	6.1	5.4	-5.6	3.2
24	T5216	3	AB	R5108	M0518	2/8/22	TLARB		APR	AM1%	NHFU	CAFU	DD1%	✓	2.4	1.0	-5.2	3.8
25	T5136	3	HT	L1007	INT	9/8/22	TLARB		HBR	AMFU	NHFU	CAFU	DDFU	✓	8.8	6.4	-9.3	0.7
26	T5075	3	HT	P5087	KOD	8/8/22	TLARB		HBR	AMFU	NHFU	CAFU	DD5%	✓	3.7	3.8	-4.5	3.6
27	T5236	3	HT	R5128	GEN	9/8/22	TLARB		HBR	AM3%	NHFU	CAFU	DDFU	✓	4.3	2.3	-2.7	2.9
28	T5089	3	AB	Q5154	M0518	11/8/22	TLARB		HBR	AM25%	NHFU	CAFU	DD3%	✓	0.2	1.6	-4.1	4.5
29	T5141	3	ASH	L0984	H0803	11/9/22	TLARB		HBR	AMFU	NHFU	CAFU	DDFU	✓	3.7	3.2	-2.8	2.9
30	T5139	3	ENH	L1000	H0205	9/9/22	TLARB		HBR	AM7%	NHFU	CAFU	DDFU	✓	5.7	3.8	-3.4	3.5
31	T5146	4	HT	N1155	J5	24/8/22	TLARB		HBR	AMFU	NHFU	CAFU	DDFU	✓	5.4	2.9	-2.0	2.6
32	T5231	4	HT	R5017	M0518	1/8/22	TLARB		HBR	AMFU	NHFU	CAFU	DDFU	✓	5.1	1.8	-5.0	2.0
33	T5133	4	HT	Q5181	MON	11/8/22	TLARB		HBR	AMFU	NHFU	CAFU	DDFU	✓	4.5	3.5	-4.9	3.5
34	T5005	4	HT	Q5091	MON	11/8/22	TLARB		APR	AMFU	NHFU	CAFU	DD4%	✓	5.8	3.5	-5.0	3.0
35	T5234	4	TR	R5045	ASH	25/8/22	TLARB		HBR	AMFU	NHFU	CAFU	DDFU	✓	-0.1	2.0	-4.9	3.5
<b>Lawsons Angus Spring Sale Bull Average</b>															<b>3.3</b>	<b>2.8</b>	<b>-4.7</b>	<b>3.3</b>
<b>Angus Breed Average</b>															<b>2.2</b>	<b>2.6</b>	<b>-4.8</b>	<b>4.0</b>

GROWTH & MATERNAL					FERTILITY		CARCASE						\$INDEX VALUE				STRUCTURAL ASSESSMENT					
200	400	600	MCW	MILK	SS	DC	CWT	RIB	RUMP	EMA	RBY	IMF	\$GN	\$A	\$D	\$GS	FC	RC	FA	RA	RS	RH
61	107	131	99	21	2.1	-5.0	86	-2.1	-3.0	12.3	0.8	4.4	378	277	229	261	6	4	5	6	5	5
59	97	120	88	16	1.4	-5.0	75	-2.6	-4.2	13.4	1.1	4.3	369	272	224	255	6	4	5	6	6	5
65	109	136	99	22	1.4	-4.5	79	-2.2	-2.4	9.7	0.6	3.8	370	269	220	251	6	5	4	5	5	5
59	104	130	99	18	2.8	-6.1	76	-2.3	-3.8	12.9	1.1	4.0	367	278	234	266	6	5	5	6	6	5
60	103	131	101	17	1.9	-5.7	81	-1.6	-2.6	11.6	0.9	4.0	366	275	226	260	6	4	6	5	5	5
54	103	131	83	25	2.7	-5.5	88	-0.3	0.3	10.7	0.4	3.9	364	272	223	261	6	5	5	6	6	6
52	90	108	68	19	1.1	-5.4	63	-1.4	-2.4	9.7	0.5	4.8	362	265	218	248	6	6	4	5	5	5
63	106	132	104	21	2.0	-4.0	73	-1.5	-1.8	12.8	0.8	4.0	360	259	210	242	6	6	4	5	5	5
59	101	125	106	14	1.2	-5.8	75	-1.6	-3.9	13.8	1.2	4.0	359	270	227	254	6	4	5	6	5	5
55	95	114	86	16	0.6	-3.3	67	-1.7	-3.5	13.1	0.8	4.7	344	245	199	226	7	5	6	6	5	5
57	98	120	89	17	1.8	-4.6	66	-2.0	-3.1	12.3	1.0	4.6	359	264	218	248	6	5	5	6	5	6
59	103	126	98	18	1.5	-4.4	71	-1.7	-3.3	12.5	0.7	4.9	359	258	210	242	6	5	5	6	5	5
64	111	139	112	20	2.3	-3.8	75	-2.1	-2.4	11.7	0.8	3.8	358	260	213	244	6	5	5	6	5	5
55	97	116	84	17	1.7	-4.2	66	-2.0	-3.1	12.5	0.9	4.8	355	257	212	240	6	4	5	4	5	5
54	93	117	87	22	2.8	-5.1	69	-0.1	-0.6	11.0	0.4	4.6	352	255	205	241	6	6	5	5	6	5
55	98	120	96	15	1.6	-5.4	74	-1.3	-2.5	13.5	1.0	4.2	352	262	218	247	6	5	5	6	6	5
57	99	120	91	17	1.5	-4.3	68	-2.0	-3.4	11.9	0.8	4.5	349	253	209	236	5	5	5	4	5	5
58	101	127	109	17	1.9	-3.6	63	-2.0	-2.1	13.7	1.2	4.3	326	235	189	219	6	5	5	6	5	5
56	99	127	106	17	2.3	-4.9	78	-1.8	-2.5	11.9	0.9	3.8	322	240	195	225	6	5	4	5	5	6
45	85	108	81	21	1.4	-5.4	70	-0.6	-1.1	6.5	0.5	3.0	280	213	176	196	6	5	5	5	5	5
57	102	123	87	19	2.7	-6.3	74	-1.2	-2.3	12.7	0.6	4.4	378	282	237	269	6	5	4	5	6	6
62	108	134	106	18	2.6	-6.0	79	-2.1	-3.7	12.5	0.9	4.1	373	279	234	266	6	5	5	5	4	6
57	99	121	92	16	1.6	-5.0	71	-1.3	-2.9	13.4	1.1	3.8	360	269	225	252	6	5	5	6	5	5
58	100	125	94	21	1.8	-3.9	67	-0.5	-0.5	11.4	0.5	4.0	346	249	200	232	5	4	5	6	4	5
50	90	108	73	21	0.9	-5.3	63	-0.5	-1.7	10.4	0.6	4.2	346	255	212	237	7	5	5	5	5	5
56	98	118	94	16	2.4	-5.2	71	-1.8	-3.3	10.1	0.7	4.5	339	251	212	235	6	5	5	5	5	5
55	97	119	95	17	1.8	-5.0	71	-2.3	-3.6	10.7	1.0	3.9	332	248	207	230	6	6	5	6	6	5
55	95	120	97	19	1.7	-3.5	62	-0.7	-0.5	12.4	0.8	3.6	318	231	185	213	6	5	6	6	5	5
54	93	119	96	21	1.6	-4.1	66	-2.6	-2.2	9.9	1.0	3.4	315	233	189	215	6	4	5	4	5	5
52	92	123	97	18	2.2	-4.5	69	-1.9	-1.4	7.3	0.4	3.3	293	222	177	207	6	5	5	6	6	5
53	95	115	77	19	1.5	-6.0	72	-0.5	-1.0	11.8	0.5	4.8	372	274	226	260	6	6	5	6	5	5
53	95	115	83	20	2.1	-4.5	67	-1.5	-2.2	12.1	0.6	4.9	350	252	206	237	6	5	5	6	5	6
56	98	119	91	17	2.6	-5.8	67	-1.8	-3.3	12.3	0.8	4.2	348	261	220	246	6	5	5	7	5	6
52	95	115	90	16	2.3	-5.8	66	-1.8	-3.5	12.7	1.0	4.0	336	254	216	240	7	6	5	6	5	5
59	103	130	111	17	0.4	-3.2	70	-1.8	-3.0	10.7	0.3	5.2	334	234	183	216	7	5	5	6	5	5
<b>54</b>	<b>97</b>	<b>120</b>	<b>90</b>	<b>19</b>	<b>1.8</b>	<b>-4.7</b>	<b>70</b>	<b>-1.3</b>	<b>-1.9</b>	<b>10.9</b>	<b>0.7</b>	<b>4.1</b>	<b>336</b>	<b>248</b>	<b>203</b>	<b>232</b>						
<b>50</b>	<b>90</b>	<b>117</b>	<b>100</b>	<b>17</b>	<b>2.1</b>	<b>-4.7</b>	<b>66</b>	<b>0.0</b>	<b>-0.3</b>	<b>6.3</b>	<b>0.5</b>	<b>2.2</b>	<b>259</b>	<b>197</b>	<b>163</b>	<b>181</b>						

# 2023 SPRING SALE BULLS

## GROUP BREEDPLAN EBVs

Lot #	Tag No	Pen	Sire	Dam	MGS	Birth Date	Mob	50K	ASA Status	AM Status	NH Status	CA Status	DD Status	CALVING EASE				
														CE TICK	DIR	DTRS	GL	BWT
36	T5122	4	Q33	Q5118	M0518	30/8/22	TLARB		HBR	AMFU	NHFU	CAFU	DD2%	✓	0.5	6.5	-5.9	2.9
37	T5138	4	R4010	L1033	SF	17/8/22	TLARB		HBR	AM1%	NHFU	CAFU	DD50%	✓	5.1	2.6	-3.4	1.7
38	T5134	4	ASH	Q5012	M0518	9/9/22	TLARB		HBR	AMFU	NHFU	CAFU	DD2%	✓	-2.3	-2.4	-2.0	4.4
39	T5143	4	HT	N1219	H0382	12/8/22	TLARB		HBR	AMFU	NHFU	CAFU	DD1%	✓	7.5	5.2	-8.3	2.3
40	T5135	4	RL	N1186	J5	12/8/22	TLARB		APR	AM2%	NH2%	CA2%	DD2%	✓	6.1	1.8	-5.9	2.3
41	T5217	5	HT	R5111	M0518	3/8/22	TLARB		HBR	AMFU	NHFU	CAFU	DDFU	✓	5.5	2.8	-4.5	1.6
42	T5108	5	HT	Q5191	M0518	11/8/22	TLARB		HBR	AM4%	NHFU	CAFU	DD37%	✓	4.3	1.0	-5.5	2.8
43	T5190	5	TR	R5042	ASH	27/8/22	TLARB		HBR	AMFU	NHFU	CAFU	DDFU	✓	-0.6	2.0	-3.6	4.4
44	T5020	5	HT	Q5166	M0518	13/8/22	TLARB		HBR	AMFU	NHFU	CAFU	DDFU	✓	0.1	0.7	-3.6	4.5
45	T5233	5	AB	R5216	M0518	4/8/22	TLARB		HBR	AMFU	NHFU	CAFU	DD3%	✓	0.9	0.0	-4.7	3.9
46	T5145	5	HT	N1104	KOD	15/8/22	TLARB		APR	AMFU	NHFU	CAFU	DD3%	✓	7.8	6.2	-4.8	1.6
47	T5026	5	AB	Q5105	G10	7/8/22	TLARB		HBR	AMFU	NHFU	CAFU	DD8%	✓	7.9	5.1	-6.2	2.1
48	T5144	5	Q33	L1074	J5	7/9/22	TLARB		APR	AMFU	NHFU	CAFU	DD2%	✓	4.8	6.9	-5.4	2.7
49	T5110	5	AB	Q5222	M0518	8/8/22	TLARB		HBR	AM25%	NHFU	CAFU	DD2%	✓	3.3	2.3	-6.6	2.6
50	T5150	5	HT	N1173	H0382	17/8/22	TLARB		HBR	AMFU	NHFU	CAFU	DDFU	✓	4.5	3.9	-6.2	3.0
51	T5202	6	HT	R5199	MON	22/8/22	TLARB		HBR	AMFU	NHFU	CAFU	DDFU	✓	6.6	4.8	-6.6	2.8
52	T5099	6	R4010	Q5128	G10	10/8/22	TLARB		HBR	AMFU	NHFU	CAFU	DDFU	✓	5.0	5.0	-3.2	3.4
53	T5222	6	M0518	R5187	ASH	31/7/22	TLARB		HBR	AMFU	NHFU	CAFU	DDFU	✓	3.8	1.5	-6.5	2.1
54	T5096	6	ASH	Q5157	M0518	5/9/22	TLARB		HBR	AM5%	NHFU	CAFU	DDFU	✓	-2.6	-3.5	-3.7	4.2
55	T5208	6	M0518	R5088	ASH	7/8/22	TLARB		HBR	AMFU	NHFU	CAFU	DDFU	✓	-1.5	-1.1	-2.9	4.2
56	T5153	6	HT	N1118	H0382	15/8/22	TLARB		HBR	AMFU	NH1%	CAFU	DD12%	✓	5.0	3.3	-5.1	3.1
57	T5085	6	ENH	P5064	KOD	29/8/22	TLARB		HBR	AMFU	NHFU	CAFU	DD4%	✓	4.8	0.9	-0.5	2.4
58	T5109	6	RL	P5213	J5	12/8/22	TLARB		HBR	AMFU	NHFU	CAFU	DDFU	✓	-0.5	-3.2	-1.8	4.6
59	T5058	6	HT	P5156	H0382	5/8/22	TLARB		HBR	AMFU	NH2%	CAFU	DD2%	✓	2.5	0.9	-6.1	4.5
60	T5151	6	ENH	N1203	H0382	6/9/22	TLARB		APR	AM1%	NH1%	CAFU	DDFU	✓	6.1	2.3	-4.7	1.8
61	T5061	7	HT	Q5004	M0518	22/8/22	TLARB		APR	AMFU	NHFU	CAFU	DDFU	✓	-1.0	0.0	-0.3	4.4
62	T5017	7	HT	Q5095	M0518	5/8/22	TLARB		HBR	AMFU	NHFU	CAFU	DDFU	✓	5.0	4.5	-8.8	3.1
63	T5090	7	Q33	Q5003	M0518	30/8/22	TLARB		HBR	AMFU	NHFU	CAFU	DDFU	✓	0.4	5.3	-6.8	3.9
64	T5038	7	ASH	Q5027	M0518	30/8/22	TLARB		HBR	AMFU	NHFU	CAFU	DD25%	✓	-0.3	-0.6	-6.5	4.0
65	T5057	7	Q33	Q5156	M0518	29/8/22	TLARB		HBR	AMC	NHFU	CAFU	DDF	✓	-0.6	5.2	-6.2	4.1
<b>Lawsons Angus Spring Sale Bull Average</b>														<b>3.3</b>	<b>2.8</b>	<b>-4.7</b>	<b>3.3</b>	
<b>Angus Breed Average</b>														<b>2.2</b>	<b>2.6</b>	<b>-4.8</b>	<b>4.0</b>	

GROWTH & MATERNAL					FERTILITY		CARCASE						\$INDEX VALUE				STRUCTURAL ASSESSMENT					
200	400	600	MCW	MILK	SS	DC	CWT	RIB	RUMP	EMA	RBY	IMF	\$GN	\$A	\$D	\$GS	FC	RC	FA	RA	RS	RH
53	101	125	87	23	2.6	-3.8	73	-1.3	-1.2	10.1	0.2	4.5	328	237	192	223	6	5	6	5	6	5
48	81	100	70	19	3.1	-5.5	55	1.4	1.7	8.9	0.1	4.4	327	238	191	223	6	6	5	6	5	5
59	104	131	107	19	2.2	-3.8	70	-2.2	-2.2	11.3	1.0	3.9	325	236	192	220	6	5	5	6	5	5
51	90	109	83	13	0.6	-4.7	62	-1.7	-3.7	10.8	1.1	3.6	324	243	205	224	6	5	5	6	6	5
44	87	110	81	19	1.5	-4.6	70	-0.4	-0.9	7.4	0.5	3.2	278	211	174	194	6	5	5	6	5	6
51	90	108	79	16	1.6	-4.4	58	-1.4	-2.7	13.9	0.9	5.4	357	257	209	242	6	5	5	6	6	5
53	94	114	84	18	1.6	-4.3	65	-2.1	-3.2	12.5	0.9	5.2	352	254	207	239	6	5	5	6	5	5
61	105	134	111	18	0.4	-4.2	73	-1.7	-2.7	9.9	0.3	5.0	347	247	195	230	6	5	4	5	4	5
57	98	121	92	17	1.8	-4.6	68	-2.3	-3.2	12.2	1.0	4.5	344	252	207	236	6	4	5	6	6	5
58	101	124	96	19	2.0	-4.0	66	-1.0	-1.0	11.8	0.7	3.8	340	246	201	229	6	5	5	6	5	5
52	93	112	89	14	2.1	-4.8	63	-0.9	-2.5	11.8	0.9	4.2	338	251	210	235	6	5	5	6	5	5
50	89	112	86	21	0.4	-4.8	61	-0.3	-1.1	11.4	0.7	4.2	337	247	199	230	6	5	6	5	6	5
47	94	119	74	21	1.7	-5.0	77	-0.2	0.3	10.0	0.4	3.6	328	248	204	235	6	4	5	6	5	6
51	89	109	82	19	1.1	-3.9	56	-0.1	-0.4	11.6	0.6	4.0	326	235	189	216	6	6	5	6	5	6
54	92	114	90	13	0.7	-4.4	66	-1.8	-3.8	9.4	0.8	4.0	319	237	195	217	6	5	4	5	6	5
53	94	115	87	17	2.1	-5.6	65	-1.7	-3.4	11.5	0.8	4.1	339	254	213	239	5	4	4	5	4	6
51	90	115	101	20	2.0	-5.8	63	0.6	-0.4	11.1	0.4	5.0	338	248	198	234	6	6	6	6	6	5
50	92	112	86	20	1.6	-3.4	55	-1.1	-1.4	11.7	0.8	4.4	324	233	188	215	6	4	5	5	4	6
58	100	127	106	19	1.6	-3.6	69	-1.7	-1.8	12.3	0.9	4.2	324	231	183	214	4	4	5	6	5	5
55	97	123	103	18	1.9	-3.5	60	-2.1	-2.2	12.7	1.0	4.6	323	232	184	216	6	5	5	6	6	5
53	93	114	91	12	0.9	-4.6	65	-2.3	-4.2	11.1	1.2	3.5	318	240	202	221	6	5	6	6	5	5
50	91	117	90	16	3.3	-4.2	61	-0.4	0.0	8.7	0.1	3.8	297	218	174	204	6	4	5	6	6	5
54	98	126	105	19	1.8	-5.1	80	-1.5	-2.1	8.3	0.6	3.3	289	218	178	201	6	4	4	5	4	5
52	91	115	99	12	0.9	-4.6	66	-2.3	-4.0	9.6	1.2	3.1	288	220	184	202	6	6	5	6	6	5
48	90	117	91	17	1.5	-3.6	63	-1.4	-1.7	5.5	0.3	3.0	267	200	161	182	6	5	6	6	5	6
55	96	116	91	14	1.8	-4.6	63	-2.2	-3.3	14.2	1.4	4.4	341	252	209	235	6	4	5	5	6	5
54	94	114	86	17	1.6	-4.7	63	-1.6	-2.7	12.5	1.0	4.5	354	260	215	244	6	6	4	5	4	5
53	102	127	86	24	2.1	-3.7	75	-0.9	-0.6	11.5	0.3	4.4	338	244	196	230	6	6	4	5	4	5
57	98	123	98	17	2.1	-4.0	62	-1.3	-1.1	11.3	0.9	3.6	325	238	193	220	6	4	6	6	5	5
49	95	120	85	20	1.6	-3.8	70	-0.5	-0.2	10.7	0.4	4.3	315	230	184	216	6	6	6	6	6	5
<b>54</b>	<b>97</b>	<b>120</b>	<b>90</b>	<b>19</b>	<b>1.8</b>	<b>-4.7</b>	<b>70</b>	<b>-1.3</b>	<b>-1.9</b>	<b>10.9</b>	<b>0.7</b>	<b>4.1</b>	<b>336</b>	<b>248</b>	<b>203</b>	<b>232</b>						
<b>50</b>	<b>90</b>	<b>117</b>	<b>100</b>	<b>17</b>	<b>2.1</b>	<b>-4.7</b>	<b>66</b>	<b>0.0</b>	<b>-0.3</b>	<b>6.3</b>	<b>0.5</b>	<b>2.2</b>	<b>259</b>	<b>197</b>	<b>163</b>	<b>181</b>						

# 2023 SPRING SALE BULLS

## GROUP BREEDPLAN EBVs

Lot #	Tag No	Pen	Sire	Dam	MGS	Birth Date	Mob	50K	ASA Status	AM Status	NH Status	CA Status	DD Status	CALVING EASE				
														CE TICK	DIR	DTRS	GL	BWT
<b>NSW</b>																		
66	T4006	1	HT	R4035	M0518	5/7/22	TVRB	Y	HBR	AMFU	NHFU	CAFU	DDFU	✓	8.4	5.5	-7.4	0.0
67	T4013	1	HT	R4037	M0518	6/7/22	TVRB	Y	HBR	AMFU	NHFU	CAFU	DD4%	✓	8.1	7.1	-6.9	2.0
68	T4051	1	HT	R4005	M0518	28/7/22	TVRB	Y	HBR	AMFU	NHFU	CAFU	DDFU	✓	8.3	5.5	-5.6	0.9
69	T4056	1	HT	L4031	H0803	31/7/22	TVRB	Y	HBR	AM2%	NHFU	CAFU	DDFU	✓	8.5	7.7	-5.9	1.1
70	T4062	2	HT	L4052	H0803	3/8/22	TVRB	Y	HBR	AMFU	NHFU	CAFU	DDFU	✓	6.8	5.0	-2.6	0.6
71	T4067	2	HT	Q4047	J5	5/8/22	TVRB	Y	HBR	AMFU	NHFU	CAFU	DDFU	✓	7.2	2.5	-4.0	3.2
72	T4068	2	HT	P4039	PROP	7/8/22	TVRB	Y	APR	AMFU	NHFU	CAFU	DD2%	✓	0.6	1.1	-0.2	4.3
73	T4075	2	HT	Q4035	J5	26/8/22	TVRB	Y	APR	AM1%	NHFU	CAFU	DD1%		0.8	-1.8	-3.9	5.4
74	T4076	2	HT	Q4027	M0518	26/8/22	TVRB	Y	HBR	AMFU	NHFU	CAFU	DD1%	✓	3.2	3.4	-4.4	3.7
75	T4015	3	Q33	P4003	L0483	7/7/22	TVRB	Y	HBR	AM4%	NHFU	CAFU	DD3%	✓	6.4	5.7	-7.4	3.2
76	T4016	3	Q33	P4024	PROP	8/7/22	TVRB	Y	HBR	AM4%	NHFU	CAFU	DD3%	✓	3.6	7.8	-5.4	3.5
77	T4019	3	Q33	M4003	E7	10/7/22	TVRB	Y	HBR	AM2%	NHFU	CAFU	DDFU	✓	6.0	9.7	-5.6	2.4
78	T4020	3	Q33	Q4040	E7	10/7/22	TVRB	Y	HBR	AMFU	NHFU	CAFU	DD2%	✓	2.6	8.7	-3.4	3.2
79	T4023	3	Q33	P4023	KOD	10/7/22	TVRB	Y	HBR	AMFU	NHFU	CAFU	DD1%	✓	6.5	7.5	-6.2	2.3
80	T4031	3	Q33	M4054	SUN	11/7/22	TVRB	Y	HBR	AMFU	NHFU	CAFU	DD7%		-10.0	-0.7	-2.6	7.3
81	T4038	4	Q33	P4033	KOD	12/7/22	TVRB	Y	HBR	AMFU	NHFU	CAFU	DD8%	✓	7.8	9.5	-1.9	1.2
82	T4042	4	Q33	M4059	SUN	15/7/22	TVRB	Y	HBR	AMFU	NH2%	CAFU	DDFU	✓	-2.8	4.0	-1.1	3.3
83	T4044	4	Q33	Q4044	E7	16/7/22	TVRB	Y	APR	AMFU	NHFU	CAFU	DD5%	✓	6.3	8.7	-3.3	2.0
84	T4045	4	Q33	M4019	SUN	18/7/22	TVRB	Y	HBR	AMFU	NHFU	CAFU	DD2%	✓	2.9	3.0	-3.0	3.6
85	T4053	4	Q33	Q4003	M0518	29/7/22	TVRB	Y	HBR	AMFU	NHFU	CAFU	DD2%	✓	3.6	7.5	-7.2	1.6
86	T4061	4	Q33	R4019	ASH	2/8/22	TVRB	Y	HBR	AMFU	NHFU	CAFU	DDFU		-0.5	1.9	-4.0	5.1
87	T4072	4	Q33	P4067	PROP	21/8/22	TVRB	Y	HBR	AMFU	NHFU	CAFU	DDF	✓	2.5	7.6	-3.1	3.6
88	T4012	5	AB	P4001	J5	6/7/22	TVRB	Y	HBR	AMFU	NHFU	CAFU	DDC	✓	7.3	-0.6	-8.1	2.6
89	T4025	5	AB	Q4008	MM	10/7/22	TVRB	Y	HBR	AMFU	NHFU	CAFU	DD2%	✓	1.7	1.8	-6.5	3.5
90	T4048	5	AB	Q4036	MM	23/7/22	TVRB	Y	HBR	AMFU	NHFU	CAFU	DD7%		-3.1	-3.4	1.4	5.3
91	T4057	5	AB	R4008	M0518	1/8/22	TVRB	Y	HBR	AMFU	NHFU	CAFU	DDFU		-3.9	-3.3	-4.6	5.8
92	T4018	6	Q0044	N4035	E7	9/7/22	TVRB	Y	HBR	AMFU	NH4%	CAFU	DD4%		-4.4	-3.3	-3.3	4.9
93	T4022	6	M0518	L4009	H0803	10/7/22	TVRB	Y	APR	AM6%	NHFU	CAFU	DDC		-3.7	-4.7	-4.0	6.0
94	T4060	6	M0518	P4058	RAD	2/8/22	TVRB	Y	HBR	AMFU	NHFU	CAFU	DDF		-5.6	-6.8	-3.5	4.6
95	T4027	6	DT	J4036	G1730	11/7/22	TVRB	Y	HBR	AMFU	NHFU	CAFU	DDF	✓	4.0	3.0	-5.8	4.3
<b>Lawsons Angus Spring Sale Bull Average</b>															<b>3.3</b>	<b>2.8</b>	<b>-4.7</b>	<b>3.3</b>
<b>Angus Breed Average</b>															<b>2.2</b>	<b>2.6</b>	<b>-4.8</b>	<b>4.0</b>

GROWTH & MATERNAL					FERTILITY		CARCASE						\$INDEX VALUE				STRUCTURAL ASSESSMENT					
200	400	600	MCW	MILK	SS	DC	CWT	RIB	RUMP	EMA	RBY	IMF	\$GN	\$A	\$D	\$GS	FC	RC	FA	RA	RS	RH
49	91	109	81	20	1.7	-5.8	72	-0.9	-1.4	7.8	0.3	4.8	338	249	207	232	7	7	7	7	5	5
46	82	92	50	18	2.8	-5.4	53	-0.6	-1.1	13.2	1.1	4.3	355	265	226	249	6	5	5	5	5	5
42	72	88	49	19	2.0	-5.0	43	0.2	-1.2	9.5	-0.1	6.9	342	240	185	227	7	6	6	7	5	5
45	76	91	56	19	-0.1	-5.7	66	-2.6	-4.1	9.3	1.2	4.1	325	245	205	224	6	6	7	6	5	6
48	79	102	66	25	-0.7	-3.9	66	-0.6	-2.1	12.7	0.7	4.7	341	242	184	222	6	6	6	6	5	5
57	98	125	99	21	1.0	-5.6	80	-3.5	-5.1	9.9	1.1	3.9	340	256	211	238	6	6	6	6	5	5
63	103	122	78	15	0.5	-6.4	81	-0.1	0.0	9.0	0.6	2.6	376	281	241	260	6	5	5	6	4	6
65	109	139	103	18	2.9	-5.0	79	-0.7	-1.1	16.5	1.3	3.5	389	288	234	275	7	6	7	7	5	6
55	95	114	83	17	-0.1	-4.5	68	-3.3	-5.0	13.5	0.9	6.3	379	269	218	253	6	5	6	6	5	5
50	98	123	69	28	2.0	-5.0	76	1.1	2.8	6.0	-1.0	4.5	344	247	197	235	6	5	6	6	5	6
56	103	131	83	21	3.5	-5.1	72	-1.9	-2.1	8.3	-0.2	5.4	356	261	211	252	7	6	6	6	5	5
55	101	131	99	22	1.6	-4.7	78	-2.3	-2.6	6.8	0.3	4.6	339	252	203	237	6	6	5	5	5	5
46	93	111	68	22	3.2	-6.0	68	0.8	2.1	8.8	0.7	2.1	314	245	214	231	7	7	6	6	5	6
58	108	133	91	24	2.4	-5.6	88	-0.7	-1.7	13.9	0.8	3.7	384	287	240	274	7	6	7	6	5	5
55	102	127	101	20	0.7	-5.7	78	-2.1	-1.5	5.4	0.3	2.8	264	198	168	179	6	7	6	7	5	5
53	110	136	77	29	3.6	-5.7	92	2.0	2.9	3.5	-1.1	4.2	358	263	218	253	7	6	7	6	5	5
48	89	116	87	22	0.6	-5.9	77	-1.9	-2.0	6.3	0.3	2.4	258	197	162	180	7	6	6	6	6	5
38	81	94	20	32	3.3	-6.4	58	0.5	1.5	13.9	0.8	4.2	370	280	235	270	7	6	7	7	5	5
53	100	123	79	22	1.4	-4.6	77	-3.0	-3.3	10.1	0.7	4.8	349	257	212	242	7	6	6	6	4	5
55	107	130	86	21	3.1	-4.7	76	0.3	1.5	9.3	0.2	3.4	352	262	221	249	6	5	5	5	5	6
57	107	136	103	23	1.9	-2.7	79	-2.2	-1.0	11.2	0.6	3.7	322	233	186	217	6	5	6	6	4	6
57	111	136	88	27	2.6	-5.2	81	-0.9	-0.7	10.5	0.1	4.2	368	271	226	259	6	6	6	6	5	5
51	86	109	83	19	0.3	-3.8	62	-1.5	-1.9	8.7	0.9	2.7	295	218	176	195	7	6	6	6	4	5
62	108	139	102	21	0.2	-3.0	81	-0.1	-0.2	7.6	-0.3	3.8	339	239	186	220	6	6	6	6	5	5
54	96	118	86	23	0.0	-1.7	70	-2.3	-2.7	14.9	2.1	0.8	280	206	172	182	6	6	6	6	5	5
68	116	152	137	20	2.0	-3.9	80	-4.6	-6.2	10.9	1.2	4.1	326	239	191	222	6	5	6	6	5	5
60	105	139	137	14	3.6	-4.7	66	-0.8	-0.4	5.6	0.4	1.7	246	187	154	172	6	5	6	6	5	5
66	112	147	123	23	4.6	-5.0	83	-3.5	-4.3	7.6	0.6	5.7	345	249	197	239	7	6	7	6	5	6
50	87	114	83	20	2.2	-3.9	59	0.9	1.4	7.9	-1.1	6.8	300	198	139	186	6	5	6	6	5	5
54	98	121	88	16	1.9	-5.7	78	-1.5	-1.6	19.2	2.8	0.2	342	275	242	259	6	5	5	5	5	5
<b>54</b>	<b>97</b>	<b>120</b>	<b>90</b>	<b>19</b>	<b>1.8</b>	<b>-4.7</b>	<b>70</b>	<b>-1.3</b>	<b>-1.9</b>	<b>10.9</b>	<b>0.7</b>	<b>4.1</b>	<b>336</b>	<b>248</b>	<b>203</b>	<b>232</b>						
<b>50</b>	<b>90</b>	<b>117</b>	<b>100</b>	<b>17</b>	<b>2.1</b>	<b>-4.7</b>	<b>66</b>	<b>0.0</b>	<b>-0.3</b>	<b>6.3</b>	<b>0.5</b>	<b>2.2</b>	<b>259</b>	<b>197</b>	<b>163</b>	<b>181</b>						



Rotational grazing bulls at Claremont, Yea over winter involves daily (and sometimes twice daily) shifts. It looks glamorous in these photos, but it's intensive with high stocking rates as bulls run at 2.5/hectare (1 bull per acre) and compete for grass on a daily basis. This allows us to grow more grass and achieve high pasture utilisation rates. The intensive grazing system requires a high attention to detail as we balance feed demand and supply (and often mud!) which directly influences animal performance and behaviour on a daily basis. Bulls are managed in their weaning contemporary groups so we can accurately measure how animals rank for growth, carcase and feed efficiency data. The large sire groups and linkage between groups provides a very accurate system for data analysis by Breedplan (now branded TransTasman Angus Cattle Evaluation). This provides an accurate platform for breeders to compare animals between management groups, different calf crops and between different seedstock herds. TACE now includes many of the progressive New Zealand studs so we can compare directly with our NZ compatriots. Now we also have the added benefits of genomic (DNA) based predictions which are included in the same single-step model. The accuracy of Breedplan is still underpinned by doing the hard yards, including collecting birth weights. This combined effort is what helps the Angus breed keep at the forefront of genetic progress on a global basis.

**▽ 1 LAWSONS HOME TOWN T5185 AI**

**Birth Date:** 3/8/22 **AM:** AMFU **NH:** NHFU **CA:** CAFU **DD:** DD3%  
**Society ID:** VLY22T5185 **ASA:** HBR **Mob:** TLARB **Pen:** 1  
**Sire:** GAR ASHLAND GAR EARLY BIRD  
 GAR HOME TOWN CHAIR ROCK AMBUSH 1018  
 CHAIR ROCK SURE FIRE 6095 GAR SURE FIRE  
 CHAIR ROCK PROGRESS 3005  
**Dam:** PARINGA JUDD J5 TUWHARETOA REGENT D145  
 LAWSONS JUDD R5082 STRATHWEN BERKLEY WILPENA F30  
 LAWSONS NZ09104 K1057 LAWSONS ANGUS NZ 09104  
 LAWSONS EVIDENT H404

August 2021 Trans Tasman Angus Cattle Evaluation														
	Calving Ease ✓				Growth and Maternal									
	DIR	DTRS	GL	BWT	200	400	600	MCW	MILK					
EBVs	6.5	2.7	-4.6	3.0	61	107	131	99	21					
Acc	57	45	84	74	69	65	65	62	57					
	Fertility				Carcase									
	SS	DC	CWT	RIB	RUMP	EMA	RBV	IMF						
EBVs	2.1	-5.0	86	-2.1	-3.0	12.3	0.8	4.4						
Acc	62	36	58	59	58	58	54	60						
Structural Assessment										\$GN	\$A	\$D	\$GS	
FC	RC	FA	RA	RS	RH									
	6	4	5	6	5	5	378	277	229	261				

Retaining semen marketing rights and 50% revenue sharing interest.

Elite sire potential here, T5185 is a performance dynamo, epitomising what we strive to achieve in our multi-trait, disciplined approach to breeding balanced animals that thrive in most production systems across Australia and lead the Angus breed globally in terms of end-product value. T5185 is the heaviest bull in the Vic sale group, which is even more remarkable given he is out of a two year old Judd daughter. Phenomenal double curve-bending attributes and elite carcase genetics to boot! Very few calving ease bulls in the entire Angus breed can match the multi-trait combination of T5185. In fact only 10 HBR bulls in the Angus breed are >2.2 DIR, <4.0 BW. Equal #4 ranked Heavy Grain (\$GN) bull in the sale, top 1% of the breed and top 5% for EMA, top 6% for IMF.

**▽ 2 LAWSONS HOME TOWN T5147 AI**

**Birth Date:** 12/8/22 **AM:** AMFU **NH:** NHFU **CA:** CAFU **DD:** DD1%  
**Society ID:** VLY22T5147 **ASA:** HBR **Mob:** TLARB **Pen:** 1  
**Sire:** GAR ASHLAND GAR EARLY BIRD  
 GAR HOME TOWN CHAIR ROCK AMBUSH 1018  
 CHAIR ROCK SURE FIRE 6095 GAR SURE FIRE  
 CHAIR ROCK PROGRESS 3005  
**Dam:** LAWSONS INCREDIBLE H803 AYRWALE BARTEL E7  
 LAWSONS INCREDIBLE L1097 LAWSONS DINKY DI E447  
 LAWSONS INVINCIBLE G1850 LAWSONS INVINCIBLE C402  
 LAWSONS SCHWARZENEGGER C188

August 2021 Trans Tasman Angus Cattle Evaluation														
	Calving Ease ✓				Growth and Maternal									
	DIR	DTRS	GL	BWT	200	400	600	MCW	MILK					
EBVs	6.9	3.7	-7.9	3.0	59	97	120	88	16					
Acc	58	46	84	75	71	67	67	63	60					
	Fertility				Carcase									
	SS	DC	CWT	RIB	RUMP	EMA	RBV	IMF						
EBVs	1.4	-5.0	75	-2.6	-4.2	13.4	1.1	4.3						
Acc	63	36	59	60	59	59	56	60						
Structural Assessment										\$GN	\$A	\$D	\$GS	
FC	RC	FA	RA	RS	RH									
	6	4	5	6	6	5	369	272	224	255				

T5147 ranks in the top 1% of the breed for Heavy Grain (\$GN) in the sale, top 5% for EMA and top 10% for IMF.









**▽ 21 LAWSONS HOME TOWN T5086 AI**

Birth Date: 8/8/22 AM: AMFU NH: NHFU CA: CAFU DD: DDFU

Society ID: VLY22T5086 ASA: HBR Mob: TLARB Pen: 3

Sire: GAR ASHLAND GAR EARLY BIRD  
 G A R HOME TOWN CHAIR ROCK AMBUSH 1018  
 CHAIR ROCK SURE FIRE 6095 CHAIR SURE FIRE  
 CHAIR ROCK PROGRESS 3005

Dam: TE MANIA MONTALTO M1314 TE MANIA BERKLEY B1  
 LAWSONS MONTALTO Q5066 TE MANIA MITTAGONG H390  
 LAWSONS JUDD N1155 LAWSONS PROPHET L946

August 2021 Trans Tasman Angus Cattle Evaluation											
EBVs	Calving Ease ✓			Growth and Maternal							
	DIR	DTRS	GL	BWT	200	400	600	MCW	MILK		
8.0	5.1	-6.6	2.6	57	102	123	87	19			
Acc	56	43	84	74	69	65	65	61	56		
EBVs	Fertility				Carcase						
	SS	DC	CWT	RIB	RUMP	EMA	RBV	IMF			
2.7	-6.3	74	-1.2	-2.3	12.7	0.6	4.4				
Acc	62	35	57	58	57	54	59				
Structural Assessment								\$GN	\$A	\$D	\$GS
6	5	4	5	6	6	378	282	237	269		

Retaining semen marketing rights and 50% revenue sharing interest.

Equal #4 ranked Heavy Grain (\$GN) bull in the sale, top 1% of the breed and top 5% for EMA, top 6% for IMF.

**▽ 22 LAWSONS HOME TOWN T5201 AI**

Birth Date: 22/8/22 AM: AMFU NH: NHFU CA: CAFU DD: DDFU

Society ID: VLY22T5201 ASA: HBR Mob: TLARB Pen: 3

Sire: GAR ASHLAND GAR EARLY BIRD  
 G A R HOME TOWN CHAIR ROCK AMBUSH 1018  
 CHAIR ROCK SURE FIRE 6095 CHAIR SURE FIRE  
 CHAIR ROCK PROGRESS 3005

Dam: TE MANIA MONTALTO M1314 TE MANIA BERKLEY B1  
 LAWSONS MONTALTO R5207 TE MANIA MITTAGONG H390  
 LAWSONS INTENSITY L967 HPCA INTENSITY 7102  
 LAWSONS BARTEL E7 H46

August 2021 Trans Tasman Angus Cattle Evaluation											
EBVs	Calving Ease ✓			Growth and Maternal							
	DIR	DTRS	GL	BWT	200	400	600	MCW	MILK		
4.6	3.6	-5.6	4.3	62	108	134	106	18			
Acc	55	43	83	73	67	64	64	61	56		
EBVs	Fertility				Carcase						
	SS	DC	CWT	RIB	RUMP	EMA	RBV	IMF			
2.6	-6.0	79	-2.1	-3.7	12.5	0.9	4.1				
Acc	62	35	57	58	57	58	54	59			
Structural Assessment								\$GN	\$A	\$D	\$GS
6	5	5	5	4	6	373	279	234	266		

#7 ranked Heavy Grain (\$GN) bull in the sale, top 1% of the breed, top 105 for IMF, top 5% for EMA and #10 ranked 600D Growth bull in the sale.

**▽ 23 LAWSONS HOME TOWN T5200 AI**

Birth Date: 20/8/22 AM: AMFU NH: NHFU CA: CAFU DD: DDFU

Society ID: VLY22T5200 ASA: HBR Mob: TLARB Pen: 3

Sire: GAR ASHLAND GAR EARLY BIRD  
 G A R HOME TOWN CHAIR ROCK AMBUSH 1018  
 CHAIR ROCK SURE FIRE 6095 CHAIR SURE FIRE  
 CHAIR ROCK PROGRESS 3005

Dam: VAR INDEX GAR INGENUITY  
 LAWSONS INDEX R5196 SANDPOINT BLACKBIRD 8809  
 LAWSONS KODAK N518 RENNYLEA KODAK K522  
 LAWSONS BARTEL E7 H825

August 2021 Trans Tasman Angus Cattle Evaluation											
EBVs	Calving Ease ✓			Growth and Maternal							
	DIR	DTRS	GL	BWT	200	400	600	MCW	MILK		
6.1	5.4	-5.6	3.2	57	99	121	92	16			
Acc	55	42	84	74	69	65	65	62	56		
EBVs	Fertility				Carcase						
	SS	DC	CWT	RIB	RUMP	EMA	RBV	IMF			
1.6	-5.0	71	-1.3	-2.9	13.4	1.1	3.8				
Acc	62	35	58	59	58	54	60				
Structural Assessment								\$GN	\$A	\$D	\$GS
6	5	5	6	5	5	360	269	225	252		

Home Town out of a two year-old VAR Index daughter, T5200 ranks in the top 2% of the breed for Heavy Grain (\$GN) in the sale and top 5% for EMA.

**▽ 24 LAWSONS ABUNDANCE T5216 AI**

Birth Date: 2/8/22 AM: AM1% NH: NHFU CA: CAFU DD: DD1%

Society ID: VLY22T5216 ASA: APR Mob: TLARB Pen: 3

Sire: GAR ASHLAND GAR EARLY BIRD  
 SC ABUNDANCE 42F CHAIR ROCK AMBUSH 1018  
 CHAIR ROCK PROPHET 6054 GAR PROPHET  
 CHAIR ROCK 6050 GAR 1131

Dam: LAWSONS MOMENTOUS M518 GAR MOMENTUM  
 LAWSONS MOMENTOUS R5108 LAWSONS AFRICA H229  
 LAWSONS SURE FIRE L330 GAR SURE FIRE  
 LAWSONS DINKY-DI G1143

August 2021 Trans Tasman Angus Cattle Evaluation											
EBVs	Calving Ease ✓			Growth and Maternal							
	DIR	DTRS	GL	BWT	200	400	600	MCW	MILK		
2.4	1.0	-5.2	3.8	58	100	125	94	21			
Acc	53	43	83	73	68	64	62	60	55		
EBVs	Fertility				Carcase						
	SS	DC	CWT	RIB	RUMP	EMA	RBV	IMF			
1.8	-3.9	67	-0.5	-0.5	11.4	0.5	4.0				
Acc	56	34	56	55	54	54	50	57			
Structural Assessment								\$GN	\$A	\$D	\$GS
5	4	5	6	4	5	346	249	200	232		

Highly credentialed Abundance son out of a two year-old Momentous heifer. Perfect growth curve and elite carcass attributes that few bulls can match in the Angus breed! Top 5% of the breed for Heavy Grain (\$GN), top 10% for EMA and IMF.

**▽ 25 LAWSONS HOME TOWN T5136 AI**

Birth Date: 9/8/22 AM: AMFU NH: NHFU CA: CAFU DD: DDFU

Society ID: VLY22T5136 ASA: HBR Mob: TLARB Pen: 3

Sire: GAR ASHLAND GAR EARLY BIRD  
 G A R HOME TOWN CHAIR ROCK AMBUSH 1018  
 CHAIR ROCK SURE FIRE 6095 CHAIR SURE FIRE  
 CHAIR ROCK PROGRESS 3005

Dam: HPCA INTENSITY 7102 GAR INGENUITY  
 LAWSONS INTENSITY L1007 GAR PREDESTINED 287L  
 LAWSONS BARTEL E7 J619 AYRVALE BARTEL E7  
 LAWSONS PONO V346 D682

August 2021 Trans Tasman Angus Cattle Evaluation											
EBVs	Calving Ease ✓			Growth and Maternal							
	DIR	DTRS	GL	BWT	200	400	600	MCW	MILK		
8.8	6.4	-9.3	0.7	50	90	108	73	21			
Acc	57	45	84	75	71	68	67	64	60		
EBVs	Fertility				Carcase						
	SS	DC	CWT	RIB	RUMP	EMA	RBV	IMF			
0.9	-5.3	63	-0.5	-1.7	10.4	0.6	4.2				
Acc	64	39	60	61	60	60	57	61			
Structural Assessment								\$GN	\$A	\$D	\$GS
7	5	5	5	5	5	346	255	212	237		

Top 5% of the breed for Heavy Grain (\$GN) and top 10% for IMF.

**▽ 26 LAWSONS HOME TOWN T5075 AI**

Birth Date: 8/8/22 AM: AMFU NH: NHFU CA: CAFU DD: DD5%

Society ID: VLY22T5075 ASA: HBR Mob: TLARB Pen: 3

Sire: GAR ASHLAND GAR EARLY BIRD  
 G A R HOME TOWN CHAIR ROCK AMBUSH 1018  
 CHAIR ROCK SURE FIRE 6095 CHAIR SURE FIRE  
 CHAIR ROCK PROGRESS 3005

Dam: RENNYLEA KODAK K522 RENNYLEA EDMUND E11  
 LAWSONS KODAK P5087 RENNYLEA EISA ERICA F810  
 LAWSONS EVIDENT H404 DUNOON EVIDENT E614  
 LAWSONS AMBUSH E1038

August 2021 Trans Tasman Angus Cattle Evaluation											
EBVs	Calving Ease ✓			Growth and Maternal							
	DIR	DTRS	GL	BWT	200	400	600	MCW	MILK		
3.7	3.8	-4.5	3.6	56	98	118	94	16			
Acc	57	44	84	74	70	66	66	62	58		
EBVs	Fertility				Carcase						
	SS	DC	CWT	RIB	RUMP	EMA	RBV	IMF			
2.4	-5.2	71	-1.8	-3.3	10.1	0.7	4.5				
Acc	63	36	58	59	58	58	55	60			
Structural Assessment								\$GN	\$A	\$D	\$GS
6	5	5	5	5	5	339	251	212	235		

Top 5% of the breed for Heavy Grain (\$GN) and IMF.

**27 LAWSONS HOME TOWN T5236 AI**

Birth Date: 9/8/22 AM: AM3% NH: NHFU CA: CAFU DD: DDFU  
 Society ID: VLY22T5236 ASA: HBR Mob: TLARB Pen: 3  
 Sire: GAR ASHLAND GAR EARLY BIRD  
 GAR HOME TOWN CHAIR ROCK AMBUSH 1018  
 CHAIR ROCK SURE FIRE 6095 CHAIR ROCK PROGRESS 3005  
 Dam: GAR GENUINE K C F BENNETT ABSOLUTE  
 LAWSONS GENUINE R5128 GAR DAYBREAK 342  
 LAWSONS INCREDIBLE H803  
 LAWSONS INCREDIBLE L616 LAWSONS STORTH OAKS H734

August 2021 Trans Tasman Angus Cattle Evaluation										
EBVs	Calving Ease ✓			Growth and Maternal						
	DIR	DTRS	GL	BWT	200	400	600	MCW	MILK	
EBVs	4.3	2.3	-2.7	2.9	55	97	119	95	17	
Acc	55	41	84	74	70	66	66	62	56	
EBVs	Fertility			Carcase				IMF		
	SS	DC	CWT	RIB	RUMP	EMA	RBV			
EBVs	1.8	-5.0	71	-2.3	-3.6	10.7	1.0	3.9		
Acc	62	34	58	59	57	58	54	60		
Structural Assessment						\$GN	\$A	\$D	\$GS	
	FC	RC	FA	RA	RS	RH	332	248	207	230
	6	6	5	6	6	5				

Home Town son out of a two year-old Genuine daughter. Top 10% of the breed for Heavy Grain (\$GN) and EMA.

**28 LAWSONS ABUNDANCE T5089 AI**

Birth Date: 11/8/22 AM: AM25% NH: NHFU CA: CAFU DD: DD3%  
 Society ID: VLY22T5089 ASA: HBR Mob: TLARB Pen: 3  
 Sire: GAR ASHLAND GAR EARLY BIRD  
 SC ABUNDANCE 42F CHAIR ROCK AMBUSH 1018  
 CHAIR ROCK PROPHET 6054 CHAIR ROCK 5050 GAR 1131  
 Dam: LAWSONS MOMENTOUS M518 GAR MOMENTUM  
 LAWSONS MOMENTOUS Q5154 LAWSONS AFRICA H229  
 LAWSONS STORTH OAKS H27 STORTH OAKS D21  
 LAWSONS GRADE UP E378

August 2021 Trans Tasman Angus Cattle Evaluation										
EBVs	Calving Ease ✓			Growth and Maternal						
	DIR	DTRS	GL	BWT	200	400	600	MCW	MILK	
EBVs	0.2	1.6	-4.1	4.5	55	95	120	97	19	
Acc	54	43	83	73	68	64	62	60	55	
EBVs	Fertility			Carcase				IMF		
	SS	DC	CWT	RIB	RUMP	EMA	RBV			
EBVs	1.7	-3.5	62	-0.7	-0.5	12.4	0.8	3.6		
Acc	56	33	56	55	54	54	50	57		
Structural Assessment						\$GN	\$A	\$D	\$GS	
	FC	RC	FA	RA	RS	RH	318	231	185	213
	6	5	6	6	5	5				

Top 5% of the breed for EMA.

**29 LAWSONS ASHLAND T5141 AI**

Birth Date: 11/9/22 AM: AMFU NH: NHFU CA: CAFU DD: DDFU  
 Society ID: VLY22T5141 ASA: HBR Mob: TLARB Pen: 3  
 Sire: GAR ASHLAND GAR EARLY BIRD  
 GAR ASHLAND GAR PROGRESS 830  
 CHAIR ROCK AMBUSH 1018 B/R AMBUSH 28  
 GAR YIELD GRADE N366  
 Dam: LAWSONS INCREDIBLE H803 AYRVALE BARTEL E7  
 LAWSONS INCREDIBLE L984 LAWSONS DINKY DI E447  
 LAWSONS STORTH OAKS J660 STORTH OAKS D21  
 LAWSONS OBJECTIVE D1036

August 2021 Trans Tasman Angus Cattle Evaluation										
EBVs	Calving Ease ✓			Growth and Maternal						
	DIR	DTRS	GL	BWT	200	400	600	MCW	MILK	
EBVs	3.7	3.2	-2.8	2.9	54	93	119	96	21	
Acc	60	51	84	75	70	67	67	65	63	
EBVs	Fertility			Carcase				IMF		
	SS	DC	CWT	RIB	RUMP	EMA	RBV			
EBVs	1.6	-4.1	66	-2.6	-2.2	9.9	1.0	3.4		
Acc	64	38	61	61	61	60	57	61		
Structural Assessment						\$GN	\$A	\$D	\$GS	
	FC	RC	FA	RA	RS	RH	315	233	189	215
	6	4	5	4	5	5				

Well balanced Ashland x Incredible, neat growth curve and high-end carcass potential in a calving ease package.

**30 LAWSONS ENHANCE T5139 AI**

Birth Date: 9/9/22 AM: AM7% NH: NHFU CA: CAFU DD: DDFU  
 Society ID: VLY22T5139 ASA: HBR Mob: TLARB Pen: 3  
 Sire: SYDGEN ENHANCE SYDGEN EXCEED 3223  
 SYDGEN ENHANCE SYDGEN FOREVER LADY 1225  
 SYDGEN RITA 2618 SYDGEN LIBERTY GA 8627  
 FOX RUN RITA 9308  
 Dam: LAWSONS HARVARD H205 AYRVALE BARTEL E7  
 LAWSONS HARVARD L1000 LAWSONS INVINCIBLE F251  
 LAWSONS STORTH OAKS J661 STORTH OAKS D21  
 LAWSONS SOLUTION D94

August 2021 Trans Tasman Angus Cattle Evaluation										
EBVs	Calving Ease ✓			Growth and Maternal						
	DIR	DTRS	GL	BWT	200	400	600	MCW	MILK	
EBVs	5.7	3.8	-3.4	3.5	52	92	123	97	18	
Acc	60	51	84	74	70	67	66	65	62	
EBVs	Fertility			Carcase				IMF		
	SS	DC	CWT	RIB	RUMP	EMA	RBV			
EBVs	2.2	-4.5	69	-1.9	-1.4	7.3	0.4	3.3		
Acc	63	38	60	61	60	59	57	60		
Structural Assessment						\$GN	\$A	\$D	\$GS	
	FC	RC	FA	RA	RS	RH	293	222	177	207
	6	5	5	6	6	5				

Neatly balanced Enhance son. Lots 30, 57 and 60 are the first Sydgen Enhance sons to sell by Lawsons Angus. Enhance has been one of the most widely used bulls in the US and Australia, with 3,287 registered progeny in Australia. Progeny are well balanced, sound and Enhance is one of the highest Net Feed Intake sires in the Angus breed, currently -0.66 NFI, top 1% of the breed.







**▽ 43 LAWSONS TRANSCENDENT T5190 AI**

Birth Date: 27/8/22 AM: AMFU NH: NHFU CA: CAFU DD: DDFU

Society ID: VLY22T5190 ASA: HBR Mob: TLARB Pen: 5

Sire: GAR MOMENTUM GAR PROGRESS GAR BIG EYE 1770 GAR PROPHET GAR DAYBREAK 2842

Dam: LAWSONS ASHLAND R5042 GAR ASHLAND GAR EARLY BIRD CHAIR ROCK AMBUSH 1018 GAR PROPHET LAWSONS PROPHET P5159 GAR PROPHET LAWSONS BARTEL E7 H1074

August 2021 Trans Tasman Angus Cattle Evaluation										
Calving Ease ✓				Growth and Maternal						
	DIR	DTRS	GL	BWT	200	400	600	MCW	MILK	
EBVs	-0.6	2.0	-3.6	4.4	61	105	134	111	18	
Acc	53	43	84	74	68	63	63	60	56	
Fertility				Carcase						
	SS	DC	CWT	RIB	RUMP	EMA	RBV	IMF		
EBVs	0.4	-4.2	73	-1.7	-2.7	9.9	0.3	5.0		
Acc	58	35	57	56	55	56	52	59		
Structural Assessment										
	FC	RC	FA	RA	RS	RH	\$GN	\$A	\$D	\$GS
	6	5	4	5	4	5	347	247	195	230

T5190 ranks in the top 5% of the breed for Heavy Grain (\$GN) and IMF, equal #7 ranked IMF bull in the sale. Lots 35 and 43 are both Transcendent sons out of two year-old Ashland daughters. GAR Transcendent is one of the breeds most elite, well balanced carcase sires at +6.6 IMF and +10.7 EMA. Transcendent is one of very few >6.5 IMF bulls that is well balanced from a multi-trait and phenotype perspective.



Ed Lawson and Brenden Ferarri at Cobwell Station after rescuing some cattle from rising flood waters in July 2023

**▽ 44 LAWSONS HOME TOWN T5020 AI**

Birth Date: 13/8/22 AM: AMFU NH: NHFU CA: CAFU DD: DDFU

Society ID: VLY22T5020 ASA: HBR Mob: TLARB Pen: 5

Sire: GAR ASHLAND GAR EARLY BIRD CHAIR ROCK AMBUSH 1018 GAR SURE FIRE CHAIR ROCK PROGRESS 3005

Dam: LAWSONS MOMENTOUS Q5166 GAR ASHLAND GAR EARLY BIRD CHAIR ROCK AMBUSH 1018 GAR PROPHET LAWSONS BARTEL E7 J993 LAWSONS EQUATOR E773

August 2021 Trans Tasman Angus Cattle Evaluation										
Calving Ease ✓				Growth and Maternal						
	DIR	DTRS	GL	BWT	200	400	600	MCW	MILK	
EBVs	0.1	0.7	-3.6	4.5	57	98	121	92	17	
Acc	56	44	84	74	69	66	65	62	57	
Fertility				Carcase						
	SS	DC	CWT	RIB	RUMP	EMA	RBV	IMF		
EBVs	1.8	-4.6	68	-2.3	-3.2	12.2	1.0	4.5		
Acc	62	37	58	59	59	59	55	61		
Structural Assessment										
	FC	RC	FA	RA	RS	RH	\$GN	\$A	\$D	\$GS
	6	4	5	6	6	5	344	252	207	236

Top 5% of the breed for Heavy Grain (\$GN), IMF and Eye Muscle Area (EMA).



Anna and Dwayne Ferrari did a fantastic job on the calving beat this year at Cobwell Station. Great job to our team, it's a tough job at times and also very rewarding when you get to the other end!

**▽ 45 LAWSONS ABUNDANCE T5233 AI**

Birth Date: 4/8/22 AM: AMFU NH: NHFU CA: CAFU DD: DD3%

Society ID: VLY22T5233 ASA: HBR Mob: TLARB Pen: 5

Sire: SC ABUNDANCE 42F GAR ASHLAND GAR EARLY BIRD CHAIR ROCK AMBUSH 1018 GAR PROPHET CHAIR ROCK 5050 GAR 1131

Dam: LAWSONS MOMENTOUS R5216 LAWSONS MOMENTOUS M518 LAWSONS SURE FIRE L931 GAR MOMENTUM LAWSONS AFRICA H229 GAR SURE FIRE LAWSONS KI EVIDENT H6062

August 2021 Trans Tasman Angus Cattle Evaluation										
Calving Ease ✓				Growth and Maternal						
	DIR	DTRS	GL	BWT	200	400	600	MCW	MILK	
EBVs	0.9	0.0	-4.7	3.9	58	101	124	96	19	
Acc	54	43	83	73	68	64	62	59	54	
Fertility				Carcase						
	SS	DC	CWT	RIB	RUMP	EMA	RBV	IMF		
EBVs	2.0	-4.0	66	-1.0	-1.0	11.8	0.7	3.8		
Acc	56	33	56	55	54	54	50	57		
Structural Assessment										
	FC	RC	FA	RA	RS	RH	\$GN	\$A	\$D	\$GS
	6	5	5	6	5	5	340	246	201	229

Elite calving ease, high growth and carcase superiority here with this Abundance son out of a two year-old Momentous heifer. T5233 ranks in the top 5% of the breed for Heavy Grain (\$GN) and EMA.

**▽ 46 LAWSONS HOME TOWN T5145 AI**

Birth Date: 15/8/22 AM: AMFU NH: NHFU CA: CAFU DD: DD3%

Society ID: VLY22T5145 ASA: APR Mob: TLARB Pen: 5

Sire: GAR ASHLAND GAR EARLY BIRD CHAIR ROCK AMBUSH 1018 GAR SURE FIRE CHAIR ROCK PROGRESS 3005

Dam: LAWSONS KODAK N1104 RENNYLEA KODAK K522 RENNYLEA EDMUND E11 RENNYLEA EISA ERICA F810 GAR ANTICIPATION 7261 LAWSONS EVIDENT J826

August 2021 Trans Tasman Angus Cattle Evaluation										
Calving Ease ✓				Growth and Maternal						
	DIR	DTRS	GL	BWT	200	400	600	MCW	MILK	
EBVs	7.8	6.2	-4.8	1.6	52	93	112	89	14	
Acc	56	43	84	74	69	65	65	62	57	
Fertility				Carcase						
	SS	DC	CWT	RIB	RUMP	EMA	RBV	IMF		
EBVs	2.1	-4.8	63	-0.9	-2.5	11.8	0.9	4.2		
Acc	62	35	58	59	58	58	55	60		
Structural Assessment										
	FC	RC	FA	RA	RS	RH	\$GN	\$A	\$D	\$GS
	6	5	5	6	5	5	338	251	210	235

Top 5% of the breed for Heavy Grain (\$GN) and EMA.



**47 LAWSONS ABUNDANCE T5026 AI**

Birth Date: 7/8/22 AM: AMFU NH: NHFU CA: CAFU DD: DD8%

Society ID: VLY22T5026 ASA: HBR Mob: TLARB Pen: 5  
 Sire: SC ABUNDANCE 42F GAR ASHLAND GAR EARLY BIRD CHAIR ROCK AMBUSH 1018 CHAIR ROCK PROPHET 6054  
 Dam: LAWSONS GET CRACKING Q5105 ALLOURA GET CRACKING G10 TE MANIA BERKLEY B1 ALLOURA JEDDA Z15 LAWSONS AMBASSADOR J620 LAWSONS OBJECTIVE D135

August 2021 Trans Tasman Angus Cattle Evaluation											
EBVs	Calving Ease				Growth and Maternal						
	DIR	DTRS	GL	BWT	200	400	600	MCW	MILK		
Acc	7.9	5.1	-6.2	2.1	50	89	112	86	21		
	54	43	83	73	68	64	62	59	54		
EBVs	Fertility				Carcase						
	SS	DC	CWT	RIB	RUMP	EMA	RBV	IMF			
Acc	0.4	-4.8	61	-0.3	-1.1	11.4	0.7	4.2			
	55	33	56	55	53	54	50	56			
Structural Assessment						\$GN	\$A	\$D	\$GS		
	FC	RC	FA	RA	RS	RH					
	6	5	6	5	6	5	337	247	199	230	

Top 5% of the breed for Heavy Grain (\$GN), top 10% for EMA and IMF.

**48 LAWSONS QUINELLA T5144 AI**

Birth Date: 7/9/22 AM: AMFU NH: NHFU CA: CAFU DD: DD2%

Society ID: VLY22T5144 ASA: APR Mob: TLARB Pen: 5  
 Sire: MOONGENILLA QUINELLA Q33 GAR FAIL SAFE CONNEALY IN SURE 8524 MOONGENILLA N9 GAR PROGRESS 830 EF COMPLEMENT 8088 MOONGENILLA L4  
 Dam: LAWSONS JUDD L1074 PARINGA JUDD J5 TUWHARETOA REGENT D145 LAWSONS BANDO D8261 STRATHEWEN BERKLEY WILPENA F30 L T 598 BANDO 9074 LAWSONS FAIR DINKUM B161

August 2021 Trans Tasman Angus Cattle Evaluation											
EBVs	Calving Ease				Growth and Maternal						
	DIR	DTRS	GL	BWT	200	400	600	MCW	MILK		
Acc	4.8	6.9	-5.4	2.7	47	94	119	74	21		
	55	43	84	74	70	66	63	60	54		
EBVs	Fertility				Carcase						
	SS	DC	CWT	RIB	RUMP	EMA	RBV	IMF			
Acc	1.7	-5.0	77	-0.2	0.3	10.0	0.4	3.6			
	60	35	55	56	56	54	52	56			
Structural Assessment						\$GN	\$A	\$D	\$GS		
	FC	RC	FA	RA	RS	RH					
	6	4	5	6	5	6	328	248	204	235	

Top 10% of the breed for Heavy Grain (\$GN).

**49 LAWSONS ABUNDANCE T5110 AI**

Birth Date: 8/8/22 AM: AM25% NH: NHFU CA: CAFU DD: DD2%

Society ID: VLY22T5110 ASA: HBR Mob: TLARB Pen: 5  
 Sire: SC ABUNDANCE 42F GAR ASHLAND GAR EARLY BIRD CHAIR ROCK AMBUSH 1018 CHAIR ROCK PROPHET 6054  
 Dam: LAWSONS MOMENTOUS M518 GAR MOMENTUM LAWSONS AFRICA H229 LAWSONS TANK B1155 LAWSONS OBJECTIVE D363

August 2021 Trans Tasman Angus Cattle Evaluation											
EBVs	Calving Ease				Growth and Maternal						
	DIR	DTRS	GL	BWT	200	400	600	MCW	MILK		
Acc	3.3	2.3	-6.6	2.6	51	89	109	82	19		
	54	43	84	74	68	64	62	60	55		
EBVs	Fertility				Carcase						
	SS	DC	CWT	RIB	RUMP	EMA	RBV	IMF			
Acc	1.1	-3.9	56	-0.1	-0.4	11.6	0.6	4.0			
	56	34	56	55	54	54	50	57			
Structural Assessment						\$GN	\$A	\$D	\$GS		
	FC	RC	FA	RA	RS	RH					
	6	6	5	6	5	6	326	235	189	216	

Top 10% of the breed for Heavy Grain (\$GN), IMF and EMA.

**50 LAWSONS HOME TOWN T5150 AI**

Birth Date: 17/8/22 AM: AMFU NH: NHFU CA: CAFU DD: DDFU

Society ID: VLY22T5150 ASA: HBR Mob: TLARB Pen: 5  
 Sire: G A R HOME TOWN GAR ASHLAND GAR EARLY BIRD CHAIR ROCK AMBUSH 1018 GAR SURE FIRE CHAIR ROCK SURE FIRE 6095  
 Dam: LAWSONS PROSPERITY H382 RENNYLEA EDMUND E11 LAWSONS OBJECTIVE E1025 LAWSONS NOVAK E313 LAWSONS PREDESTINED B395 G956

August 2021 Trans Tasman Angus Cattle Evaluation											
EBVs	Calving Ease				Growth and Maternal						
	DIR	DTRS	GL	BWT	200	400	600	MCW	MILK		
Acc	4.5	3.9	-6.2	3.0	54	92	114	90	13		
	56	43	84	75	70	66	66	62	58		
EBVs	Fertility				Carcase						
	SS	DC	CWT	RIB	RUMP	EMA	RBV	IMF			
Acc	0.7	-4.4	66	-1.8	-3.8	9.4	0.8	4.0			
	62	35	58	58	58	58	54	60			
Structural Assessment						\$GN	\$A	\$D	\$GS		
	FC	RC	FA	RA	RS	RH					
	6	5	4	5	6	5	319	237	195	217	

Top 10% of the breed for Heavy Grain (\$GN) and IMF. #10 ranked 600D Growth bull in the sale.

**51 LAWSONS HOME TOWN T5202 AI**

Birth Date: 22/8/22 AM: AMFU NH: NHFU CA: CAFU DD: DDFU

Society ID: VLY22T5202 ASA: HBR Mob: TLARB Pen: 6  
 Sire: G A R HOME TOWN GAR ASHLAND GAR EARLY BIRD CHAIR ROCK AMBUSH 1018 CHAIR ROCK SURE FIRE 6095  
 Dam: LAWSONS MONTALTO R5199 TE MANIA MONTALTO M1314 TE MANIA BERKLEY B1 TE MANIA MITTAGONG H390 LAWSONS PROSPERITY H382 LAWSONS NOVAK K861

August 2021 Trans Tasman Angus Cattle Evaluation											
EBVs	Calving Ease				Growth and Maternal						
	DIR	DTRS	GL	BWT	200	400	600	MCW	MILK		
Acc	6.6	4.8	-6.6	2.8	53	94	115	87	17		
	55	42	83	73	69	65	65	61	56		
EBVs	Fertility				Carcase						
	SS	DC	CWT	RIB	RUMP	EMA	RBV	IMF			
Acc	2.1	-5.6	65	-1.7	-3.4	11.5	0.8	4.1			
	61	34	57	58	57	57	53	59			
Structural Assessment						\$GN	\$A	\$D	\$GS		
	FC	RC	FA	RA	RS	RH					
	5	4	4	5	4	6	339	254	213	239	

Top 5% of the breed for Heavy Grain (\$GN) and top 10% for EMA and IMF.

**52 LAWSONS ROCKY T5099 AI**

Birth Date: 10/8/22 AM: AMFU NH: NHFU CA: CAFU DD: DDFU

Society ID: VLY22T5099 ASA: HBR Mob: TLARB Pen: 6  
 Sire: LAWSONS ROCKY R4010 GAR MOMENTUM GAR PROGRESS GAR BIG EYE 1770 LAWSONS JUDD P4005 PARINGA JUDD J5 LAWSONS PROPHET M4047  
 Dam: LAWSONS GET CRACKING Q5128 ALLOURA GET CRACKING G10 TE MANIA BERKLEY B1 ALLOURA JEDDA Z15 AYRVALE BARTEL E7 LAWSONS TOTAL D934

August 2021 Trans Tasman Angus Cattle Evaluation											
EBVs	Calving Ease				Growth and Maternal						
	DIR	DTRS	GL	BWT	200	400	600	MCW	MILK		
Acc	5.0	5.0	-3.2	3.4	51	90	115	101	20		
	54	43	84	74	69	63	62	59	53		
EBVs	Fertility				Carcase						
	SS	DC	CWT	RIB	RUMP	EMA	RBV	IMF			
Acc	2.0	-5.8	63	0.6	-0.4	11.1	0.4	5.0			
	57	36	55	54	54	52	49	55			
Structural Assessment						\$GN	\$A	\$D	\$GS		
	FC	RC	FA	RA	RS	RH					
	6	6	6	6	6	5	338	248	198	234	

Top 5% of the breed for Heavy Grain (\$GN) and IMF, top 10% for EMA. Equal #7 IMF bull in the sale.



Rotational grazing bulls at Claremont, Yea.

53		LAWSONS MOMENTOUS T5222				AI					
Birth Date:		31/7/22	AM:	AMFU	NH:	NHFU	CA:	CAFU	DD:	DDFU	
Society ID:		VLY22T5222	ASA:	HBR	Mob:	TLARB	Pen:	6			
Sire:		LAWSONS MOMENTOUS M518	GAR MOMENTUM			GAR PROGRESS					
Dam:		LAWSONS ASHLAND R5187	GAR ASHLAND			GAR EARLY BIRD					
		LAWSONS AFRICA H229	LAWSONS PROSPERITY N1219			CHAIR ROCK AMBUSH 1018					
			LAWSONS ROCKND AMBUSH E1103			LAWSONS ANTICIPATION K917					
August 2021 Trans Tasman Angus Cattle Evaluation											
		Calving Ease ✓			Growth and Maternal						
		DIR	DTRS	GL	BWT	200	400	600	MCW	MILK	
EBVs		3.8	1.5	-6.5	2.1	50	92	112	86	20	
Acc		61	52	84	74	69	66	65	64	61	
		Fertility			Carcase						
		SS	DC	CWT	RIB	RUMP	EMA	RBV	IMF		
EBVs		1.6	-3.4	55	-1.1	-1.4	11.7	0.8	4.4		
Acc		63	42	61	61	61	60	57	62		
		Structural Assessment						\$GN	\$A	\$D	\$GS
		FC	RC	FA	RA	RS	RH				
		6	4	5	5	4	6	324	233	188	215

Top 10% of the breed for Heavy Grain (\$GN) and EMA, top 6% for IMF.

54		LAWSONS ASHLAND T5096				AI					
Birth Date:		5/9/22	AM:	AM5%	NH:	NHFU	CA:	CAFU	DD:	DDFU	
Society ID:		VLY22T5096	ASA:	HBR	Mob:	TLARB	Pen:	6			
Sire:		GAR ASHLAND	GAR EARLY BIRD			GAR DAYLIGHT					
Dam:		LAWSONS MOMENTOUS Q5157	LAWSONS MOMENTOUS M518			GAR PROGRESS 830					
		LAWSONS AFRICA H229	LAWSONS PROSPERITY H382			B/R AMBUSH 28					
			LAWSONS ANTICIPATION K917			GAR YIELD GRADE N366					
			LAWSONS REGENT J445			GAR MOMENTUM					
						LAWSONS AFRICA H229					
						TUWHARETOA REGENT D145					
						LAWSONS INVINCIBLE F470					
August 2021 Trans Tasman Angus Cattle Evaluation											
		Calving Ease ✓			Growth and Maternal						
		DIR	DTRS	GL	BWT	200	400	600	MCW	MILK	
EBVs		-2.6	-3.5	-3.7	4.2	58	100	127	106	19	
Acc		61	52	84	74	70	66	66	65	62	
		Fertility			Carcase						
		SS	DC	CWT	RIB	RUMP	EMA	RBV	IMF		
EBVs		1.6	-3.6	69	-1.7	-1.8	12.3	0.9	4.2		
Acc		63	39	61	61	60	59	57	61		
		Structural Assessment						\$GN	\$A	\$D	\$GS
		FC	RC	FA	RA	RS	RH				
		4	4	5	6	5	5	324	231	183	214

Top 10% of the breed for Heavy Grain (\$GN) and IMF, top 5% for EMA.

## 55 LAWSONS MOMENTOUS T5208 AI

Birth Date: 7/8/22 AM: AMFU NH: NHFU CA: CAFU DD: DDFU

Society ID: VLY22T5208 ASA: HBR Mob: TLARB Pen: 6

Sire: GAR MOMENTUM  
 LAWSONS MOMENTOUS M518  
 LAWSONS AFRICA H229

GAR PROGRESS  
 GAR BIG EYE 1770  
 TE MANIA AFRICA A217  
 LAWSONS ROCKND AMBUSH E1103

Dam: GAR ASHLAND  
 LAWSONS ASHLAND R5088  
 LAWSONS ANTICIPATION L697

GAR EARLY BIRD  
 CHAIR ROCK AMBUSH 1018  
 GAR ANTICIPATION 7261  
 LAWSONS BARTEL E7 J315

August 2021 Trans Tasman Angus Cattle Evaluation										
Calving Ease			Growth and Maternal							
	DIR	DTRS	GL	BWT	200	400	600	MCW	MILK	
EBVs	-1.5	-1.1	-2.9	4.2	55	97	123	103	18	
Acc	61	52	84	74	69	66	66	65	62	
Fertility			Carcase							
	SS	DC	CWT	RIB	RUMP	EMA	RBY	IMF		
EBVs	1.9	-3.5	60	-2.1	-2.2	12.7	1.0	4.6		
Acc	63	43	61	62	62	60	58	63		
Structural Assessment							\$GN	\$A	\$D	\$GS
FC	RC	FA	RA	RS	RH		323	232	184	216
6	5	5	6	6	5					

Top 10% of the breed for Heavy Grain (\$GN) and top 5% for EMA and IMF.

## 56 LAWSONS HOME TOWN T5153 AI

Birth Date: 15/8/22 AM: AMFU NH: NH1% CA: CAFU DD: DD12%

Society ID: VLY22T5153 ASA: HBR Mob: TLARB Pen: 6

Sire: GAR ASHLAND  
 LAWSONS HOME TOWN  
 CHAIR ROCK SURE FIRE 6095

GAR EARLY BIRD  
 CHAIR ROCK AMBUSH 1018  
 GAR SURE FIRE  
 CHAIR ROCK PROGRESS 3005

Dam: LAWSONS PROSPERITY H382  
 LAWSONS PROSPERITY N1118  
 LAWSONS ANTICIPATION L628

RENNYLEA EDMUND E11  
 LAWSONS OBJECTIVE E1025  
 GAR ANTICIPATION 7261  
 LAWSONS EVIDENT H290

August 2021 Trans Tasman Angus Cattle Evaluation										
Calving Ease			Growth and Maternal							
	DIR	DTRS	GL	BWT	200	400	600	MCW	MILK	
EBVs	5.0	3.3	-5.1	3.1	53	93	114	91	12	
Acc	56	43	84	74	70	66	66	62	58	
Fertility			Carcase							
	SS	DC	CWT	RIB	RUMP	EMA	RBY	IMF		
EBVs	0.9	-4.6	65	-2.3	-4.2	11.1	1.2	3.5		
Acc	62	34	58	59	58	58	54	59		
Structural Assessment							\$GN	\$A	\$D	\$GS
FC	RC	FA	RA	RS	RH		318	240	202	221
6	5	6	6	5	5					

Top 10% of the breed for EMA.

## 57 LAWSONS ENHANCE T5085 AI

Birth Date: 29/8/22 AM: AMFU NH: NHFU CA: CAFU DD: DD4%

Society ID: VLY22T5085 ASA: HBR Mob: TLARB Pen: 6

Sire: SYDGEN EXCEED 3223  
 SYDGEN ENHANCE  
 SYDGEN RITA 2618

SYDGEN GOOGOL  
 SYDGEN FOREVER LADY 1225  
 SYDGEN LIBERTY GA 8627  
 FOX RUN RITA 9308

Dam: RENNYLEA KODAK K522  
 LAWSONS KODAK P5064  
 LAWSONS EVIDENT H251

RENNYLEA EDMUND E11  
 RENNYLEA EISA ERICA F810  
 DUNOON EVIDENT E614  
 LAWSONS INVINCIBLE F289

August 2021 Trans Tasman Angus Cattle Evaluation										
Calving Ease			Growth and Maternal							
	DIR	DTRS	GL	BWT	200	400	600	MCW	MILK	
EBVs	4.8	0.9	-0.5	2.4	50	91	117	90	16	
Acc	61	52	83	74	69	66	65	64	61	
Fertility			Carcase							
	SS	DC	CWT	RIB	RUMP	EMA	RBY	IMF		
EBVs	3.3	-4.2	61	-0.4	0.0	8.7	0.1	3.8		
Acc	63	39	60	60	60	59	56	60		
Structural Assessment							\$GN	\$A	\$D	\$GS
FC	RC	FA	RA	RS	RH		297	218	174	204
6	4	5	6	6	5					

Enhance is the most widely used Angus bulls in the US and Australia over the past five years. Lots 30, 57 and 60 are the first Sydgen Enhance sons to sell by Lawsons Angus.

## 58 LAWSONS RELIANT T5109 AI

Birth Date: 12/8/22 AM: AMFU NH: NHFU CA: CAFU DD: DDFU

Society ID: VLY22T5109 ASA: HBR Mob: TLARB Pen: 6

Sire: GAR RELIANT  
 GAR DESTINATION N244

GAR SURE FIRE  
 CONNEALY IN SURE 8524  
 CHAIR ROCK 5050 GAR 8086  
 B/R DESTINATION 727-928  
 GAR PREDESTINED 3279

Dam: PARINGA JUDD J5  
 LAWSONS JUDD P5213  
 LAWSONS NOVAK H113

TUWHARETOA REGENT D145  
 STRATHWEHEN BERKLEY WILPENA F30  
 LAWSONS NOVAK E313  
 LAWSONS GAR SOLUTION D1171

August 2021 Trans Tasman Angus Cattle Evaluation										
Calving Ease			Growth and Maternal							
	DIR	DTRS	GL	BWT	200	400	600	MCW	MILK	
EBVs	-0.5	-3.2	-1.8	4.6	54	98	126	105	19	
Acc	55	44	84	74	69	65	65	61	55	
Fertility			Carcase							
	SS	DC	CWT	RIB	RUMP	EMA	RBY	IMF		
EBVs	1.8	-5.1	80	-1.5	-2.1	8.3	0.6	3.3		
Acc	61	38	57	58	58	57	54	60		
Structural Assessment							\$GN	\$A	\$D	\$GS
FC	RC	FA	RA	RS	RH		289	218	178	201
6	4	4	5	4	5					

Lots 20, 40 and 58 are all well balanced GAR Reliant sons, great outcross option for most. Reliant's progeny are some of the best disposition that we have worked with and his top 1% Net Feed Intake (NFI) is an important step for us and clients as we make genetic progress for this important economic trait.

## 59 LAWSONS HOME TOWN T5058 AI

Birth Date: 5/8/22 AM: AMFU NH: NH2% CA: CAFU DD: DD2%

Society ID: VLY22T5058 ASA: HBR Mob: TLARB Pen: 6

Sire: GAR ASHLAND  
 LAWSONS HOME TOWN  
 CHAIR ROCK SURE FIRE 6095

GAR EARLY BIRD  
 CHAIR ROCK AMBUSH 1018  
 GAR SURE FIRE  
 CHAIR ROCK PROGRESS 3005

Dam: LAWSONS PROSPERITY H382  
 LAWSONS PROSPERITY P5156  
 LAWSONS EVIDENT H707

RENNYLEA EDMUND E11  
 LAWSONS OBJECTIVE E1025  
 DUNOON EVIDENT E614  
 LAWSONS SWAGMAN D367

August 2021 Trans Tasman Angus Cattle Evaluation										
Calving Ease			Growth and Maternal							
	DIR	DTRS	GL	BWT	200	400	600	MCW	MILK	
EBVs	2.5	0.9	-6.1	4.5	52	91	115	99	12	
Acc	55	42	84	74	69	65	65	62	57	
Fertility			Carcase							
	SS	DC	CWT	RIB	RUMP	EMA	RBY	IMF		
EBVs	0.9	-4.6	66	-2.3	-4.0	9.6	1.2	3.1		
Acc	62	35	58	58	57	58	54	59		
Structural Assessment							\$GN	\$A	\$D	\$GS
FC	RC	FA	RA	RS	RH		288	220	184	202
6	6	5	6	6	5					

## 60 LAWSONS ENHANCE T5151 AI

Birth Date: 6/9/22 AM: AM1% NH: NH1% CA: CAFU DD: DDFU

Society ID: VLY22T5151 ASA: APR Mob: TLARB Pen: 6

Sire: SYDGEN EXCEED 3223  
 SYDGEN ENHANCE  
 SYDGEN RITA 2618

SYDGEN GOOGOL  
 SYDGEN FOREVER LADY 1225  
 SYDGEN LIBERTY GA 8627  
 FOX RUN RITA 9308

Dam: LAWSONS PROSPERITY H382  
 LAWSONS PROSPERITY N1203  
 LAWSONS NOVAK K487

RENNYLEA EDMUND E11  
 LAWSONS OBJECTIVE E1025  
 LAWSONS NOVAK E313  
 LAWSONS SOLUTION D2

August 2021 Trans Tasman Angus Cattle Evaluation										
Calving Ease			Growth and Maternal							
	DIR	DTRS	GL	BWT	200	400	600	MCW	MILK	
EBVs	6.1	2.3	-4.7	1.8	48	90	117	91	17	
Acc	61	52	84	74	69	65	66	64	61	
Fertility			Carcase							
	SS	DC	CWT	RIB	RUMP	EMA	RBY	IMF		
EBVs	1.5	-3.6	63	-1.4	-1.7	5.5	0.3	3.0		
Acc	62	39	60	59	59	58	56	60		
Structural Assessment							\$GN	\$A	\$D	\$GS
FC	RC	FA	RA	RS	RH		267	200	161	182
6	5	6	6	5	6					

Enhance offers a well balanced outcross option, superb growth curve and soundness from a well recognised maternal herd in the US. Enhance is also top 1% of the breed for Net Feed Intake and will play an important role as we move the bell curve for NFI over the next stage in our breeding program.

# VIC YEARLING BULLS

## 61 LAWSONS HOME TOWN T5061 AI

Birth Date: 22/8/22 AM: AMFU NH: NHFU CA: CAFU DD: DDFU  
 Society ID: VLY22T5061 ASA: APR Mob: TLARB Pen: 7  
 Sire: GAR ASHLAND GAR EARLY BIRD  
 G A R HOME TOWN CHAIR ROCK AMBUSH 1018  
 CHAIR ROCK SURE FIRE 6095 GAR SURE FIRE  
 CHAIR ROCK PROGRESS 3005  
 Dam: LAWSONS MOMENTOUS M518 GAR MOMENTUM  
 LAWSONS MOMENTOUS Q5004 LAWSONS AFRICA H229  
 LAWSONS ANTICIPATION L991 GAR ANTICIPATION 7261  
 LAWSONS BARTEL E7 J803

August 2021 Trans Tasman Angus Cattle Evaluation											
EBVs	Calving Ease			Growth and Maternal							
	DIR	DTRS	GL	BWT	200	400	600	MCW	MILK		
EBVs	-1.0	0.0	-0.3	4.4	55	96	116	91	14		
Acc	56	44	84	74	70	66	66	63	58		
EBVs	Fertility			Carcase				IMF			
	SS	DC	CWT	RIB	RUMP	EMA	RBV				
EBVs	1.8	-4.6	63	-2.2	-3.3	14.2	1.4	4.4			
Acc	63	36	59	60	59	59	55	61			
Structural Assessment											
		FC	RC	FA	RA	RS	RH	\$GN	\$A	\$D	\$GS
		6	4	5	5	6	5	341	252	209	235

Top 5% of the breed for Heavy Grain (\$GN). #5 ranked EMA bull in the sale, top 2% of the breed, top 6% for IMF.

## 62 LAWSONS HOME TOWN T5017 AI

Birth Date: 5/8/22 AM: AMFU NH: NHFU CA: CAFU DD: DDFU  
 Society ID: VLY22T5017 ASA: HBR Mob: TLARB Pen: 7  
 Sire: GAR ASHLAND GAR EARLY BIRD  
 G A R HOME TOWN CHAIR ROCK AMBUSH 1018  
 CHAIR ROCK SURE FIRE 6095 GAR SURE FIRE  
 CHAIR ROCK PROGRESS 3005  
 Dam: LAWSONS MOMENTOUS M518 GAR MOMENTUM  
 LAWSONS MOMENTOUS Q5095 LAWSONS AFRICA H229  
 LAWSONS BARTEL E7 J849 AYRVALE BARTEL E7  
 LAWSONS SCHWEARNEGGER C1848

August 2021 Trans Tasman Angus Cattle Evaluation											
EBVs	Calving Ease			Growth and Maternal							
	DIR	DTRS	GL	BWT	200	400	600	MCW	MILK		
EBVs	5.0	4.5	-8.8	3.1	54	94	114	86	17		
Acc	56	44	84	74	70	66	66	62	57		
EBVs	Fertility			Carcase				IMF			
	SS	DC	CWT	RIB	RUMP	EMA	RBV				
EBVs	1.6	-4.7	63	-1.6	-2.7	12.5	1.0	4.5			
Acc	62	37	58	59	58	59	55	61			
Structural Assessment											
		FC	RC	FA	RA	RS	RH	\$GN	\$A	\$D	\$GS
		6	6	4	5	4	5	354	260	215	244

Top 5% of the breed for Heavy Grain (\$GN), IMF and Eye Muscle Area (EMA).

## 63 LAWSONS QUINELLA T5090 AI

Birth Date: 30/8/22 AM: AMFU NH: NHFU CA: CAFU DD: DDFU  
 Society ID: VLY22T5090 ASA: HBR Mob: TLARB Pen: 7  
 Sire: GAR FAIL SAFE CONNEALY IN SURE 8524  
 MOONGENILLA QUINELLA Q33 GAR PROGRESS 830  
 MOONGENILLA N9 EF COMPLEMENT 8088  
 MOONGENILLA L4  
 Dam: LAWSONS MOMENTOUS M518 GAR MOMENTUM  
 LAWSONS MOMENTOUS Q5003 LAWSONS AFRICA H229  
 LAWSONS ANTICIPATION L1055 GAR ANTICIPATION 7261  
 LAWSONS EQUATOR E751

August 2021 Trans Tasman Angus Cattle Evaluation											
EBVs	Calving Ease			Growth and Maternal							
	DIR	DTRS	GL	BWT	200	400	600	MCW	MILK		
EBVs	0.4	5.3	-6.8	3.9	53	102	127	86	24		
Acc	55	43	84	74	69	65	62	59	53		
EBVs	Fertility			Carcase				IMF			
	SS	DC	CWT	RIB	RUMP	EMA	RBV				
EBVs	2.1	-3.7	75	-0.9	-0.6	11.5	0.3	4.4			
Acc	60	34	55	55	55	53	50	55			
Structural Assessment											
		FC	RC	FA	RA	RS	RH	\$GN	\$A	\$D	\$GS
		6	6	4	5	4	5	338	244	196	230

Top 5% of the breed for Heavy Grain (\$GN), top 6% for IMF and top 10% for EMA.

## 64 LAWSONS ASHLAND T5038 AI

Birth Date: 30/8/22 AM: AMFU NH: NHFU CA: CAFU DD: DD25%  
 Society ID: VLY22T5038 ASA: HBR Mob: TLARB Pen: 7  
 Sire: GAR EARLY BIRD GAR DAYLIGHT  
 GAR ASHLAND GAR PROGRESS 830  
 CHAIR ROCK AMBUSH 1018 B/R AMBUSH 28  
 GAR YIELD GRADE N366  
 Dam: LAWSONS MOMENTOUS M518 GAR MOMENTUM  
 LAWSONS MOMENTOUS Q5027 LAWSONS AFRICA H229  
 LAWSONS SURE FIRE L1033 GAR SURE FIRE  
 LAWSONS EVIDENT J663

August 2021 Trans Tasman Angus Cattle Evaluation											
EBVs	Calving Ease			Growth and Maternal							
	DIR	DTRS	GL	BWT	200	400	600	MCW	MILK		
EBVs	-0.3	-0.6	-6.5	4.0	57	98	123	98	17		
Acc	62	53	83	74	70	66	66	65	61		
EBVs	Fertility			Carcase				IMF			
	SS	DC	CWT	RIB	RUMP	EMA	RBV				
EBVs	2.1	-4.0	62	-1.3	-1.1	11.3	0.9	3.6			
Acc	63	38	60	61	60	60	57	61			
Structural Assessment											
		FC	RC	FA	RA	RS	RH	\$GN	\$A	\$D	\$GS
		6	4	6	6	5	5	325	238	193	220

Top 10% of the breed for Heavy Grain (\$GN) and EMA.

## 65 LAWSONS QUINELLA T5057 AI

Birth Date: 29/8/22 AM: AMC NH: NHFU CA: CAFU DD: DDF  
 Society ID: VLY22T5057 ASA: HBR Mob: TLARB Pen: 7  
 Sire: GAR FAIL SAFE CONNEALY IN SURE 8524  
 MOONGENILLA QUINELLA Q33 GAR PROGRESS 830  
 MOONGENILLA N9 EF COMPLEMENT 8088  
 MOONGENILLA L4  
 Dam: LAWSONS MOMENTOUS M518 GAR MOMENTUM  
 LAWSONS MOMENTOUS Q5156 LAWSONS AFRICA H229  
 LAWSONS TANK G1172 LAWSONS ROCKY W129 A679

August 2021 Trans Tasman Angus Cattle Evaluation											
EBVs	Calving Ease			Growth and Maternal							
	DIR	DTRS	GL	BWT	200	400	600	MCW	MILK		
EBVs	-0.6	5.2	-6.2	4.1	49	95	120	85	20		
Acc	54	43	68	73	69	65	62	59	53		
EBVs	Fertility			Carcase				IMF			
	SS	DC	CWT	RIB	RUMP	EMA	RBV				
EBVs	1.6	-3.8	70	-0.5	-0.2	10.7	0.4	4.3			
Acc	60	35	55	55	55	53	51	56			
Structural Assessment											
		FC	RC	FA	RA	RS	RH	\$GN	\$A	\$D	\$GS
		6	6	6	6	6	5	315	230	184	216

Top 10% of the breed for EMA and IMF. Please not AMC recessive status, more suitable for crossbreeding.



The Yea team, Jamie Hilder, Michelle Muller, Charlotte Lawson and Mick Dunn (missing in photo out working!).



Another great result for Charlotte at the 2023 NRHA Oceania Affiliate Championship Show, winning reserve champion for her grade.



Charlotte and the gang at Claremont.



And so it goes, battling rising flood waters at Cobwell Station.



Ed hard at work at Cobwell Station while he was home from Lincoln Uni, NZ in July.



# NSW BULLS

**▽ 66 LAWSONS HOME TOWN T4006 AI**

**Birth Date:** 5/7/22 **AM:** AMFU **NH:** NHFU **CA:** CAFU **DD:** DDFU  
**Society ID:** VLY22T4006 **ASA:** HBR **Mob:** TVRB **Pen:** 1  
**Sire:** GAR ASHLAND GAR EARLY BIRD  
 GAR HOME TOWN CHAIR ROCK AMBUSH 1018  
 CHAIR ROCK SURE FIRE 6095 GAR SURE FIRE  
 CHAIR ROCK PROGRESS 3005  
**Dam:** LAWSONS MOMENTOUS M518 GAR MOMENTUM  
 LAWSONS MOMENTOUS R4035 LAWSONS AFRICA H229  
 LAWSONS JUDD P4047 LAWSONS NOVAK K4012

August 2021 Trans Tasman Angus Cattle Evaluation										
Calving Ease ✓				Growth and Maternal						
	DIR	DTRS	GL	BWT	200	400	600	MCW	MILK	
EBVs	8.4	5.5	-7.4	0.0	49	91	109	81	20	
Acc	61	49	72	72	74	72	72	70	64	
Fertility			Carcase							
	SS	DC	CWT	RIB	RUMP	EMA	RBV	IMF		
EBVs	1.7	-5.8	72	-0.9	-1.4	7.8	0.3	4.8		
Acc	70	39	64	65	65	64	59	68		
Structural Assessment						\$GN	\$A	\$D	\$GS	
	FC	RC	FA	RA	RS	RH				
	7	7	7	7	5	5	338	249	207	232

T4006 ranks in the top 5% of the breed for Heavy Grain (\$GN) and IMF. Lots 66, 67 and 69 are all Home Town sons out of two year old Momentous daughters in NSW sale group. We believe in multiplying large numbers of bulls by elite sires and stacking generations of elite sires is the best way to achieve a consistent bull drop and cow herd that drives our clients genetic gain.



**▽ 67 LAWSONS HOME TOWN T4013 AI**

**Birth Date:** 6/7/22 **AM:** AMFU **NH:** NHFU **CA:** CAFU **DD:** DD4%  
**Society ID:** VLY22T4013 **ASA:** HBR **Mob:** TVRB **Pen:** 1  
**Sire:** GAR ASHLAND GAR EARLY BIRD  
 GAR HOME TOWN CHAIR ROCK AMBUSH 1018  
 CHAIR ROCK SURE FIRE 6095 GAR SURE FIRE  
 CHAIR ROCK PROGRESS 3005  
**Dam:** LAWSONS MOMENTOUS M518 GAR MOMENTUM  
 LAWSONS MOMENTOUS R4037 LAWSONS AFRICA H229  
 LAWSONS ANTICIPATION K4030 GAR ANTICIPATION 7261  
 LAWSONS SCHWARZENEGGER C8572

August 2021 Trans Tasman Angus Cattle Evaluation										
Calving Ease ✓				Growth and Maternal						
	DIR	DTRS	GL	BWT	200	400	600	MCW	MILK	
EBVs	8.1	7.1	-6.9	2.0	46	82	92	50	18	
Acc	60	47	72	72	74	72	72	69	64	
Fertility			Carcase							
	SS	DC	CWT	RIB	RUMP	EMA	RBV	IMF		
EBVs	2.8	-5.4	53	-0.6	-1.1	13.2	1.1	4.3		
Acc	70	38	64	65	64	64	59	68		
Structural Assessment						\$GN	\$A	\$D	\$GS	
	FC	RC	FA	RA	RS	RH				
	6	5	5	5	5	5	355	265	226	249

T4013 ranks in the top 5% of the breed for Heavy Grain (\$GN) and Eye Muscle Area (EMA), top 10% for IMF. Lots 66, 67 and 69 are all Home Town sons out of two year old Momentous daughters in NSW sale group. Moderate growth and MCW, still managed to put on 3.4kg/day over August so no slouch in terms of converting grass into beef and massive carcass potential.



**▽ 68 LAWSONS HOME TOWN T4051 AI**

**Birth Date:** 28/7/22 **AM:** AMFU **NH:** NHFU **CA:** CAFU **DD:** DDFU  
**Society ID:** VLY22T4051 **ASA:** HBR **Mob:** TVRB **Pen:** 1  
**Sire:** GAR ASHLAND GAR EARLY BIRD  
 GAR HOME TOWN CHAIR ROCK AMBUSH 1018  
 CHAIR ROCK SURE FIRE 6095 GAR SURE FIRE  
 CHAIR ROCK PROGRESS 3005  
**Dam:** LAWSONS MOMENTOUS M518 GAR MOMENTUM  
 LAWSONS MOMENTOUS R4005 LAWSONS AFRICA H229  
 LAWSONS PROPHET M4047 GAR PROPHET  
 LAWSONS BARTEL E7 J4026

August 2021 Trans Tasman Angus Cattle Evaluation										
Calving Ease ✓				Growth and Maternal						
	DIR	DTRS	GL	BWT	200	400	600	MCW	MILK	
EBVs	8.3	5.5	-5.6	0.9	42	72	88	49	19	
Acc	60	48	72	72	74	72	73	70	64	
Fertility			Carcase							
	SS	DC	CWT	RIB	RUMP	EMA	RBV	IMF		
EBVs	2.0	-5.0	43	0.2	-1.2	9.5	-0.1	6.9		
Acc	70	39	64	65	65	65	59	68		
Structural Assessment						\$GN	\$A	\$D	\$GS	
	FC	RC	FA	RA	RS	RH				
	7	6	6	7	5	5	342	240	185	227

T4051 represents the leading edge of marbling potential in the Angus breed at +6.9 IMF, top 1% of the breed. This Home Town out of a two year old Momentous daughter is the highest marbling bull in the sale. Top 5% of the breed for Heavy Grain (\$GN).



**▽ 69      LAWSONS HOME TOWN T4056      AI**

**Birth Date:** 31/7/22    **AM:** AM2%    **NH:** NHFU    **CA:** CAFU    **DD:** DDFU  
**Society ID:** VLY22T4056    **ASA:** HBR    **Mob:** TVRB    **Pen:** 1  
**Sire:** GAR ASHLAND    GAR EARLY BIRD  
**G A R HOME TOWN**    CHAIR ROCK AMBUSH 1018  
 CHAIR ROCK SURE FIRE 6095    GAR SURE FIRE  
 CHAIR ROCK PROGRESS 3005  
**Dam:** LAWSONS INCREDIBLE H803    AYRVALE BARTEL E7  
**LAWSONS INCREDIBLE L4031**    LAWSONS DINKY DI E447  
 LAWSONS SCHWARZENEGGER C8472    TEHAMA SCHWARZENEGGER N600  
 LAWSONS PARAMOUNT X408

August 2021 Trans Tasman Angus Cattle Evaluation										
Calving Ease ✓				Growth and Maternal						
	DIR	DTRS	GL	BWT	200	400	600	MCW	MILK	
EBVs	8.5	7.7	-5.9	1.1	45	76	91	56	19	
Acc	61	48	72	74	74	73	73	70	64	
Fertility				Carcase						
	SS	DC	CWT	RIB	RUMP	EMA	RBV	IMF		
EBVs	-0.1	-5.7	66	-2.6	-4.1	9.3	1.2	4.1		
Acc	71	38	64	65	64	64	59	67		
Structural Assessment						\$GN	\$A	\$D	\$GS	
	FC	RC	FA	RA	RS	RH				
	6	6	7	6	5	6	325	245	205	224

Top 10% of the breed for Heavy Grain (\$GN) and IMF. #10 ranked 600D Growth bull in the sale.



**▽ 70      LAWSONS HOME TOWN T4062      AI**

**Birth Date:** 3/8/22    **AM:** AMFU    **NH:** NHFU    **CA:** CAFU    **DD:** DDFU  
**Society ID:** VLY22T4062    **ASA:** HBR    **Mob:** TVRB    **Pen:** 2  
**Sire:** GAR ASHLAND    GAR EARLY BIRD  
**G A R HOME TOWN**    CHAIR ROCK AMBUSH 1018  
 CHAIR ROCK SURE FIRE 6095    GAR SURE FIRE  
 CHAIR ROCK PROGRESS 3005  
**Dam:** LAWSONS INCREDIBLE H803    AYRVALE BARTEL E7  
**LAWSONS INCREDIBLE L4052**    LAWSONS DINKY DI E447  
 LAWSONS NOVAK J4034    LAWSONS NOVAK E313  
 LAWSONS TANK C8532

August 2021 Trans Tasman Angus Cattle Evaluation										
Calving Ease ✓				Growth and Maternal						
	DIR	DTRS	GL	BWT	200	400	600	MCW	MILK	
EBVs	6.8	5.0	-2.6	0.6	48	79	102	66	25	
Acc	61	48	74	74	74	73	73	70	64	
Fertility				Carcase						
	SS	DC	CWT	RIB	RUMP	EMA	RBV	IMF		
EBVs	-0.7	-3.9	66	-0.6	-2.1	12.7	0.7	4.7		
Acc	69	39	64	65	65	64	60	67		
Structural Assessment						\$GN	\$A	\$D	\$GS	
	FC	RC	FA	RA	RS	RH				
	6	6	6	6	5	5	341	242	184	222

Top 5% of the breed for Heavy Grain (\$GN), IMF and Eye Muscle Area (EMA).



**▽ 71      LAWSONS HOME TOWN T4067      AI**

**Birth Date:** 5/8/22    **AM:** AMFU    **NH:** NHFU    **CA:** CAFU    **DD:** DDFU  
**Society ID:** VLY22T4067    **ASA:** HBR    **Mob:** TVRB    **Pen:** 2  
**Sire:** GAR ASHLAND    GAR EARLY BIRD  
**G A R HOME TOWN**    CHAIR ROCK AMBUSH 1018  
 CHAIR ROCK SURE FIRE 6095    GAR SURE FIRE  
 CHAIR ROCK PROGRESS 3005  
**Dam:** PARINGA JUDD J5    TUWHARETOA REGENT D145  
**LAWSONS JUDD Q4047**    STRATHEWEN BERKLEY WILPENA F30  
 LAWSONS INCREDIBLE H803  
 LAWSONS TANK C8532

August 2021 Trans Tasman Angus Cattle Evaluation										
Calving Ease ✓				Growth and Maternal						
	DIR	DTRS	GL	BWT	200	400	600	MCW	MILK	
EBVs	7.2	2.5	-4.0	3.2	57	98	125	99	21	
Acc	61	48	72	74	74	72	72	69	63	
Fertility				Carcase						
	SS	DC	CWT	RIB	RUMP	EMA	RBV	IMF		
EBVs	1.0	-5.6	80	-3.5	-5.1	9.9	1.1	3.9		
Acc	69	39	64	65	64	64	59	67		
Structural Assessment						\$GN	\$A	\$D	\$GS	
	FC	RC	FA	RA	RS	RH				
	6	6	6	6	5	5	340	256	211	238

Top 5% of the breed for Heavy Grain (\$GN).





**72 LAWSONS HOME TOWN T4068 AI**

Birth Date: 7/8/22 AM: AMFU NH: NHFU CA: CAFU DD: DD2%  
 Society ID: VLY22T4068 ASA: APR Mob: TVRB Pen: 2  
 Sire: GAR ASHLAND GAR EARLY BIRD  
 GAR HOME TOWN CHAIR ROCK AMBUSH 1018  
 CHAIR ROCK SURE FIRE 6095 CHAIR ROCK SURE FIRE  
 CHAIR ROCK PROGRESS 3005  
 Dam: GAR PROPHET C R A BEXTOR 872 5205 608  
 LAWSONS PROPHEP GAR OBJECTIVE 1885  
 LAWSONS BARTEL E7 K4038 AYRVALE BARTEL E7  
 LAWSONS TANK D8144

August 2021 Trans Tasman Angus Cattle Evaluation										
Calving Ease				Growth and Maternal						
	DIR	DTRS	GL	BWT	200	400	600	MCW	MILK	
EBVs	0.6	1.1	-0.2	4.3	63	103	122	78	15	
Acc	60	48	72	74	74	72	72	70	63	
Fertility			Carcase							
	SS	DC	CWT	RIB	RUMP	EMA	RBV	IMF		
EBVs	0.5	-6.4	81	-0.1	0.0	9.0	0.6	2.6		
Acc	70	41	64	65	65	65	60	68		
Structural Assessment						\$GN	\$A	\$D	\$GS	
	FC	RC	FA	RA	RS	RH				
	6	5	5	6	4	6	376	281	241	260

#6 ranked Heavy Grain (\$GN) bull in the sale, top 1% of the breed.



**73 LAWSONS HOME TOWN T4075 AI**

Birth Date: 26/8/22 AM: AM1% NH: NHFU CA: CAFU DD: DD1%  
 Society ID: VLY22T4075 ASA: APR Mob: TVRB Pen: 2  
 Sire: GAR ASHLAND GAR EARLY BIRD  
 GAR HOME TOWN CHAIR ROCK AMBUSH 1018  
 CHAIR ROCK SURE FIRE 6095 CHAIR ROCK SURE FIRE  
 CHAIR ROCK PROGRESS 3005  
 Dam: PARINGA JUDD J5 TUWHARETOA REGENT D145  
 LAWSONS JUDD Q4035 STRATHWEN BERKLEY WILPENA F30  
 LAWSONS INCREDIBLE L4040 LAWSONS INCREDIBLE H803  
 LAWSONS NOVAK J4038

August 2021 Trans Tasman Angus Cattle Evaluation										
Calving Ease				Growth and Maternal						
	DIR	DTRS	GL	BWT	200	400	600	MCW	MILK	
EBVs	0.8	-1.8	-3.9	5.4	65	109	139	103	18	
Acc	60	48	72	73	74	71	72	69	63	
Fertility			Carcase							
	SS	DC	CWT	RIB	RUMP	EMA	RBV	IMF		
EBVs	2.9	-5.0	79	-0.7	-1.1	16.5	1.3	3.5		
Acc	69	38	63	64	64	64	59	67		
Structural Assessment						\$GN	\$A	\$D	\$GS	
	FC	RC	FA	RA	RS	RH				
	7	6	7	7	5	6	389	288	234	275



It's worth noting the outstanding growth and moderate MCW on T4075, along with his massive carcass attributes and good looks! Home Town x Judd is an excellent combination for breeders pursuing optimal ranges across all key economic traits that excel both on-farm and across all sectors in the supply chain. Highest Heavy Grain (\$GN) bull in the sale, top 1% of the breed. #2 EMA bull in the sale, top 1% of the breed and equal #3 600D Growth bull in the sale. As pointed out by Vince Rheinberger, T4075 is the equal youngest NSW bull in the sale and still just under 500kg in August and put on 3kgs per day over that August period. Dam Lawson's Judd Q4035 sells as Lot 99 in this sale. Q4035 sells PTIC to GAR Home Town AI'd 7/7/23 and due to calve 15 April 2024.

**74 LAWSONS HOME TOWN T4076 AI**

Birth Date: 26/8/22 AM: AMFU NH: NHFU CA: CAFU DD: DD1%  
 Society ID: VLY22T4076 ASA: HBR Mob: TVRB Pen: 2  
 Sire: GAR ASHLAND GAR EARLY BIRD  
 GAR HOME TOWN CHAIR ROCK AMBUSH 1018  
 CHAIR ROCK SURE FIRE 6095 CHAIR ROCK SURE FIRE  
 CHAIR ROCK PROGRESS 3005  
 Dam: LAWSONS MOMENTOUS M518 GAR MOMENTUM  
 LAWSONS MOMENTOUS Q4027 LAWSONS AFRICA H229  
 LAWSONS SUNRISE M4019 GAR SUNRISE  
 LAWSONS AMBASSADOR J4015

August 2021 Trans Tasman Angus Cattle Evaluation										
Calving Ease				Growth and Maternal						
	DIR	DTRS	GL	BWT	200	400	600	MCW	MILK	
EBVs	3.2	3.4	-4.4	3.7	55	95	114	83	17	
Acc	62	49	73	74	75	73	73	70	64	
Fertility			Carcase							
	SS	DC	CWT	RIB	RUMP	EMA	RBV	IMF		
EBVs	-0.1	-4.5	68	-3.3	-5.0	13.5	0.9	6.3		
Acc	71	39	65	66	65	65	60	68		
Structural Assessment						\$GN	\$A	\$D	\$GS	
	FC	RC	FA	RA	RS	RH				
	6	5	6	6	5	5	379	269	218	253

Retaining semen marketing rights and 50% revenue sharing interest.

#3 ranked Heavy Grain (\$GN) and IMF bull in the sale, top 1% of the breed for both \$GN and IMF and top 5% for EMA.



**▽ 75 LAWSONS QUINELLA T4015 AI**

**Birth Date:** 7/7/22 **AM:** AM4% **NH:** NHFU **CA:** CAFU **DD:** DD3%  
**Society ID:** VLY22T4015 **ASA:** HBR **Mob:** TVRB **Pen:** 3  
 GAR FAIL SAFE CONNEALY IN SURE 8524  
**Sire:** MOONGENILLA QUINELLA Q33 GAR PROGRESS 830  
 MOOGENILLA N9 EF COMPLEMENT 8088  
 MOOGENILLA L4  
 LAWSONS LINKEDIN L483 PARINGA JUDD J5  
**Dam:** LAWSONS LINKEDIN P4003 LAWSONS BARTEL E7 H221  
 LAWSONS PREDESTINED C8328 LAWSONS PARAMOUNT X402

August 2021 Trans Tasman Angus Cattle Evaluation										
Calving Ease				Growth and Maternal						
	DIR	DTRS	GL	BWT	200	400	600	MCW	MILK	
EBVs	6.4	5.7	-7.4	3.2	50	98	123	69	28	
Acc	58	46	73	74	75	72	71	69	62	
Fertility				Carcase						
	SS	DC	CWT	RIB	RUMP	EMA	RBV	IMF		
EBVs	2.0	-5.0	76	1.1	2.8	6.0	-1.0	4.5		
Acc	69	38	62	63	63	61	57	66		
Structural Assessment						\$GN	\$A	\$D	\$GS	
	FC	RC	FA	RA	RS	RH				
	6	5	6	6	5	6	344	247	197	235

The first of the Moogenilla Quinella Q33 sons to sell in NSW with 18 Q33 sons to sell in NSW group of sale bulls. We have used Q33 extensively in our herd because of his unique balance of key performance traits, maternal efficiency and elite carcass traits, as well as helping maintain genetic diversity in our herd. T4015 ranks in the top 5% of the breed for Heavy Grain (\$GN) and IMF.



**▽ 76 LAWSONS QUINELLA T4016 AI**

**Birth Date:** 8/7/22 **AM:** AM4% **NH:** NHFU **CA:** CAFU **DD:** DD3%  
**Society ID:** VLY22T4016 **ASA:** HBR **Mob:** TVRB **Pen:** 3  
 GAR FAIL SAFE CONNEALY IN SURE 8524  
**Sire:** MOONGENILLA QUINELLA Q33 GAR PROGRESS 830  
 MOOGENILLA N9 EF COMPLEMENT 8088  
 MOOGENILLA L4  
 GAR PROPHET C R A BEXTOR 872 5205 608  
**Dam:** LAWSONS PROPHET P4024 GAR OBJECTIVE 1885  
 LAWSONS KING ISLAND BEEF D8014 LAWSONS KING ISLAND BEEF Z1292  
 LAWSONS PARAMOUNT X147B

August 2021 Trans Tasman Angus Cattle Evaluation										
Calving Ease				Growth and Maternal						
	DIR	DTRS	GL	BWT	200	400	600	MCW	MILK	
EBVs	3.6	7.8	-5.4	3.5	56	103	131	83	21	
Acc	58	47	72	74	74	72	70	68	60	
Fertility				Carcase						
	SS	DC	CWT	RIB	RUMP	EMA	RBV	IMF		
EBVs	3.5	-5.1	72	-1.9	-2.1	8.3	-0.2	5.4		
Acc	68	39	61	62	62	60	57	64		
Structural Assessment						\$GN	\$A	\$D	\$GS	
	FC	RC	FA	RA	RS	RH				
	7	6	6	6	5	5	356	261	211	252

Top 5% of the breed for Heavy Grain (\$GN) and IMF; the equal #5 IMF bull in the sale.



**▽ 77 LAWSONS QUINELLA T4019 AI**

**Birth Date:** 10/7/22 **AM:** AM2% **NH:** NHFU **CA:** CAFU **DD:** DDFU  
**Society ID:** VLY22T4019 **ASA:** HBR **Mob:** TVRB **Pen:** 3  
 GAR FAIL SAFE CONNEALY IN SURE 8524  
**Sire:** MOONGENILLA QUINELLA Q33 GAR PROGRESS 830  
 MOOGENILLA N9 EF COMPLEMENT 8088  
 MOOGENILLA L4  
 AYRVALE BARTEL E7 TE MANIA BARTEL B219  
**Dam:** LAWSONS BARTEL E7 M4003 EAGLEHAWK JEDDA B32  
 LAWSONS NOVAK K4035 LAWSONS NOVAK E313  
 LAWSONS BOOM TIME C8067

August 2021 Trans Tasman Angus Cattle Evaluation										
Calving Ease				Growth and Maternal						
	DIR	DTRS	GL	BWT	200	400	600	MCW	MILK	
EBVs	6.0	9.7	-5.6	2.4	55	101	131	99	22	
Acc	58	47	72	74	74	72	71	68	61	
Fertility				Carcase						
	SS	DC	CWT	RIB	RUMP	EMA	RBV	IMF		
EBVs	1.6	-4.7	78	-2.3	-2.6	6.8	0.3	4.6		
Acc	69	40	62	63	63	62	57	66		
Structural Assessment						\$GN	\$A	\$D	\$GS	
	FC	RC	FA	RA	RS	RH				
	6	6	5	5	5	5	339	252	203	237

T4019 ranks in the top 5% of the breed for Heavy Grain (\$GN) and IMF. Expect his EMA to increase as ultrasound data is included in the next run of EBVs prior to sale, he had the largest EMA at 106 sq cm and weighed 588kg averaging 3.3 kg/d over August.



**78 LAWSONS QUINELLA T4020 AI**

**Birth Date:** 10/7/22 **AM:** AMFU **NH:** NHFU **CA:** CAFU **DD:** DD2%  
**Society ID:** VLY22T4020 **ASA:** HBR **Mob:** TVRB **Pen:** 3  
**Sire:** MOONGENILLA QUINELLA Q33  
 GAR FAIL SAFE CONNEALY IN SURE 8524  
 MOOGENILLA N9 GAR PROGRESS 830  
 EF COMPLEMENT 8088  
 MOOGENILLA L4  
**Dam:** LAWSONS BARTEL Q4040  
 AYRVALE BARTEL E7 TE MANIA BARTEL B219  
 EAGLEHAWK JEDDA B32  
 LAWSONS NOVAK E313  
 LAWSONS PONO V346 B27

August 2021 Trans Tasman Angus Cattle Evaluation										
Calving Ease				Growth and Maternal						
	DIR	DTRS	GL	BWT	200	400	600	MCW	MILK	
EBVs	2.6	8.7	-3.4	3.2	46	93	111	68	22	
Acc	59	49	72	74	74	72	71	68	61	
Fertility			Carcase							
	SS	DC	CWT	RIB	RUMP	EMA	RBV	IMF		
EBVs	3.2	-6.0	68	0.8	2.1	8.8	0.7	2.1		
Acc	69	40	62	63	63	61	57	65		
Structural Assessment						\$GN	\$A	\$D	\$GS	
	FC	RC	FA	RA	RS	RH				
	7	7	6	6	5	6	314	245	214	231

Retaining semen marketing rights and 50% revenue sharing interest.

Massive spread between 600D and MCW in this Q33 son.



**79 LAWSONS QUINELLA T4023 AI**

**Birth Date:** 10/7/22 **AM:** AMFU **NH:** NHFU **CA:** CAFU **DD:** DD1%  
**Society ID:** VLY22T4023 **ASA:** HBR **Mob:** TVRB **Pen:** 3  
**Sire:** MOONGENILLA QUINELLA Q33  
 GAR FAIL SAFE CONNEALY IN SURE 8524  
 MOOGENILLA N9 GAR PROGRESS 830  
 EF COMPLEMENT 8088  
 MOOGENILLA L4  
**Dam:** LAWSONS KODAK P4023  
 RENNYLEA KODAK K522 RENNYLEA EDMUND E11  
 RENNYLEA EISA ERICA F810  
 GAR ANTICIPATION 7261  
 LAWSONS HENRY VIII D8318

August 2021 Trans Tasman Angus Cattle Evaluation										
Calving Ease				Growth and Maternal						
	DIR	DTRS	GL	BWT	200	400	600	MCW	MILK	
EBVs	6.5	7.5	-6.2	2.3	58	108	133	91	24	
Acc	58	46	72	74	74	72	70	67	60	
Fertility			Carcase							
	SS	DC	CWT	RIB	RUMP	EMA	RBV	IMF		
EBVs	2.4	-5.6	88	-0.7	-1.7	13.9	0.8	3.7		
Acc	68	36	61	62	62	60	56	64		
Structural Assessment						\$GN	\$A	\$D	\$GS	
	FC	RC	FA	RA	RS	RH				
	7	6	7	6	5	5	384	287	240	274

Retaining semen marketing rights and 50% revenue sharing interest.

One of Vince's picks in a tough field as bulls are so even. T4023 is the #2 ranked Heavy Grain (\$GN) bull in the sale, top 1% of the breed. Equal #6 ranked EMA bull in the sale, top 3% of the breed.



**80 LAWSONS QUINELLA T4031 AI**

**Birth Date:** 11/7/22 **AM:** AMFU **NH:** NHFU **CA:** CAFU **DD:** DD7%  
**Society ID:** VLY22T4031 **ASA:** HBR **Mob:** TVRB **Pen:** 3  
**Sire:** MOONGENILLA QUINELLA Q33  
 GAR FAIL SAFE CONNEALY IN SURE 8524  
 MOOGENILLA N9 GAR PROGRESS 830  
 EF COMPLEMENT 8088  
 MOOGENILLA L4  
**Dam:** LAWSONS SUNRISE M4054  
 GAR SUNRISE MCC DAYBREAK  
 GAR OBJECTIVE R227  
 DUNOON EVIDENT E614  
 LAWSONS SWAGMAN D8197

August 2021 Trans Tasman Angus Cattle Evaluation										
Calving Ease				Growth and Maternal						
	DIR	DTRS	GL	BWT	200	400	600	MCW	MILK	
EBVs	-10.0	-0.7	-2.6	7.3	55	102	127	101	20	
Acc	58	45	72	74	74	71	70	67	60	
Fertility			Carcase							
	SS	DC	CWT	RIB	RUMP	EMA	RBV	IMF		
EBVs	0.7	-5.7	78	-2.1	-1.5	5.4	0.3	2.8		
Acc	68	36	61	62	62	60	55	64		
Structural Assessment						\$GN	\$A	\$D	\$GS	
	FC	RC	FA	RA	RS	RH				
	6	7	6	7	5	5	264	198	168	179



**81 LAWSONS QUINELLA T4038 AI**

**Birth Date:** 12/7/22 **AM:** AMFU **NH:** NHFU **CA:** CAFU **DD:** DD8%  
**Society ID:** VLY22T4038 **ASA:** HBR **Mob:** TVRB **Pen:** 4  
 GAR FAIL SAFE CONNEALY IN SURE 8524  
**Sire:** MOONGENILLA QUINELLA Q33 GAR PROGRESS 830  
 MOOGENILLA N9 EF COMPLEMENT 8088  
 MOOGENILLA L4  
 RENNYLEA KODAK K522 RENNYLEA EDMUND E11  
**Dam:** LAWSONS KODAK P4033 RENNYLEA EISA ERICA F810  
 LAWSONS SUNRISE M4039 GAR SUNRISE  
 LAWSONS HENRY D1054 J4007



August 2021 Trans Tasman Angus Cattle Evaluation										
Calving Ease				Growth and Maternal						
	DIR	DTRS	GL	BWT	200	400	600	MCW	MILK	
EBVs	7.8	9.5	-1.9	1.2	53	110	136	77	29	
Acc	58	45	72	74	74	72	70	68	60	
Fertility				Carcass						
	SS	DC	CWT	RIB	RUMP	EMA	RBV	IMF		
EBVs	3.6	-5.7	92	2.0	2.9	3.5	-1.1	4.2		
Acc	68	36	61	62	62	60	56	64		
Structural Assessment							\$GN	\$A	\$D	\$GS
	FC	RC	FA	RA	RS	RH				
	7	6	7	6	5	5	358	263	218	253

Described by Vince Rheinberger as "Outstanding, weighed 576 kgs in August and second highest ADG at 3 kgs/day in August period, top 3% across all major Indexes (\$GN, \$A, \$FA, \$GS) and top 10% for IMF. Great muscle expression and lots of thickness." T4038 is also the #8 ranked 600D Growth bull in the sale.

**82 LAWSONS QUINELLA T4042 AI**

**Birth Date:** 15/7/22 **AM:** AMFU **NH:** NH2% **CA:** CAFU **DD:** DDFU  
**Society ID:** VLY22T4042 **ASA:** HBR **Mob:** TVRB **Pen:** 4  
 GAR FAIL SAFE CONNEALY IN SURE 8524  
**Sire:** MOONGENILLA QUINELLA Q33 GAR PROGRESS 830  
 MOOGENILLA N9 EF COMPLEMENT 8088  
 MOOGENILLA L4  
 GAR SUNRISE MCC DAYBREAK  
**Dam:** LAWSONS SUNRISE M4059 GAR OBJECTIVE R227  
 LAWSONS EQUATOR D8214 WILSONS DOWN EQUATOR V191  
 LAWSONS ROCKN D AMBUSH X786



August 2021 Trans Tasman Angus Cattle Evaluation										
Calving Ease				Growth and Maternal						
	DIR	DTRS	GL	BWT	200	400	600	MCW	MILK	
EBVs	-2.8	4.0	-1.1	3.3	48	89	116	87	22	
Acc	58	46	72	74	74	71	70	67	60	
Fertility				Carcass						
	SS	DC	CWT	RIB	RUMP	EMA	RBV	IMF		
EBVs	0.6	-5.9	77	-1.9	-2.0	6.3	0.3	2.4		
Acc	69	36	61	62	62	60	56	64		
Structural Assessment							\$GN	\$A	\$D	\$GS
	FC	RC	FA	RA	RS	RH				
	7	6	6	6	6	5	258	197	162	180

**83 LAWSONS QUINELLA T4044 AI**

**Birth Date:** 16/7/22 **AM:** AMFU **NH:** NHFU **CA:** CAFU **DD:** DD5%  
**Society ID:** VLY22T4044 **ASA:** APR **Mob:** TVRB **Pen:** 4  
 GAR FAIL SAFE CONNEALY IN SURE 8524  
**Sire:** MOONGENILLA QUINELLA Q33 GAR PROGRESS 830  
 MOOGENILLA N9 EF COMPLEMENT 8088  
 MOOGENILLA L4  
 AYRVALE BARTEL E7 TE MANIA BARTEL B219  
**Dam:** LAWSONS BARTEL Q4044 EAGLEHAWK JEDDA B32  
 LAWSONS AMBASSADOR J4021 TOPBOS AMBASSADOR F4  
 LAWSONS EQUATOR D8263



August 2021 Trans Tasman Angus Cattle Evaluation										
Calving Ease				Growth and Maternal						
	DIR	DTRS	GL	BWT	200	400	600	MCW	MILK	
EBVs	6.3	8.7	-3.3	2.0	38	81	94	20	32	
Acc	59	47	71	73	73	71	69	67	59	
Fertility				Carcass						
	SS	DC	CWT	RIB	RUMP	EMA	RBV	IMF		
EBVs	3.3	-6.4	58	0.5	1.5	13.9	0.8	4.2		
Acc	68	39	60	61	61	60	55	64		
Structural Assessment							\$GN	\$A	\$D	\$GS
	FC	RC	FA	RA	RS	RH				
	7	6	7	7	5	5	370	280	235	270

Equal #9 ranked Heavy Grain (\$GN) bull in the sale, top 1% of the breed. Equal #6 ranked EMA bull in the sale, top 3% of the breed plus top 10% for EMA.

**84 LAWSONS QUINELLA T4045 AI**

Birth Date: 18/7/22 AM: AMFU NH: NHFU CA: CAFU DD: DD2%  
 Society ID: VLY22T4045 ASA: HBR Mob: TVRB Pen: 4  
 Sire: MOONGENILLA QUINELLA Q33 GAR FAIL SAFE CONNEALY IN SURE 8524 GAR PROGRESS 830 EF COMPLEMENT 8088 MOOGENILLA N9 MOOGENILLA L4  
 Dam: LAWSONS SUNRISE M4019 GAR SUNRISE MCC DAYBREAK GAR OBJECTIVE R227 TOPBOS AMBASSADOR F4 LAWSONS EQUATOR EB350 LAWSONS AMBASSADOR J4015

August 2021 Trans Tasman Angus Cattle Evaluation										
Calving Ease					Growth and Maternal					
	DIR	DTRS	GL	BWT	200	400	600	MCW	MILK	
EBVs	2.9	3.0	-3.0	3.6	53	100	123	79	22	
Acc	58	46	72	74	74	72	70	68	60	
Fertility			Carcase							
	SS	DC	CWT	RIB	RUMP	EMA	REY	IMF		
EBVs	1.4	-4.6	77	-3.0	-3.3	10.1	0.7	4.8		
Acc	68	35	61	62	62	60	56	64		
Structural Assessment						\$GN	\$A	\$D	\$GS	
	FC	RC	FA	RA	RS	RH				
	7	6	6	6	4	5	349	257	212	242

Top 5% of the breed for Heavy Grain (\$GN) and IMF.



**85 LAWSONS QUINELLA T4053 AI**

Birth Date: 29/7/22 AM: AMFU NH: NHFU CA: CAFU DD: DD2%  
 Society ID: VLY22T4053 ASA: HBR Mob: TVRB Pen: 4  
 Sire: MOONGENILLA QUINELLA Q33 GAR FAIL SAFE CONNEALY IN SURE 8524 GAR PROGRESS 830 EF COMPLEMENT 8088 MOOGENILLA N9 MOOGENILLA L4  
 Dam: LAWSONS MOMENTOUS M518 LAWSONS MOMENTOUS Q4003 GAR MOMENTUM LAWSONS AFRICA H229 GAR PROPHET LAWSONS PONO V346 B27 LAWSONS PROPHET N4030

August 2021 Trans Tasman Angus Cattle Evaluation										
Calving Ease					Growth and Maternal					
	DIR	DTRS	GL	BWT	200	400	600	MCW	MILK	
EBVs	3.6	7.5	-7.2	1.6	55	107	130	86	21	
Acc	57	45	71	73	73	71	70	67	59	
Fertility			Carcase							
	SS	DC	CWT	RIB	RUMP	EMA	REY	IMF		
EBVs	3.1	-4.7	76	0.3	1.5	9.3	0.2	3.4		
Acc	68	37	61	61	61	60	55	64		
Structural Assessment						\$GN	\$A	\$D	\$GS	
	FC	RC	FA	RA	RS	RH				
	6	5	5	5	5	6	352	262	221	249

Top 5% of the breed for Heavy Grain (\$GN).



**86 LAWSONS QUINELLA T4061 AI**

Birth Date: 2/8/22 AM: AMFU NH: NHFU CA: CAFU DD: DDFU  
 Society ID: VLY22T4061 ASA: HBR Mob: TVRB Pen: 4  
 Sire: MOONGENILLA QUINELLA Q33 GAR FAIL SAFE CONNEALY IN SURE 8524 GAR PROGRESS 830 EF COMPLEMENT 8088 MOOGENILLA N9 MOOGENILLA L4  
 Dam: LAWSONS ASHLAND R4019 GAR ASHLAND GAR EARLY BIRD CHAIR ROCK AMBUSH 1018 TOPBOS AMBASSADOR F4 LAWSONS EQUATOR EB350 LAWSONS AMBASSADOR J4015

August 2021 Trans Tasman Angus Cattle Evaluation										
Calving Ease					Growth and Maternal					
	DIR	DTRS	GL	BWT	200	400	600	MCW	MILK	
EBVs	-0.5	1.9	-4.0	5.1	57	107	136	103	23	
Acc	59	47	73	73	74	72	71	68	61	
Fertility			Carcase							
	SS	DC	CWT	RIB	RUMP	EMA	REY	IMF		
EBVs	1.9	-2.7	79	-2.2	-1.0	11.2	0.6	3.7		
Acc	69	36	62	62	62	61	56	65		
Structural Assessment						\$GN	\$A	\$D	\$GS	
	FC	RC	FA	RA	RS	RH				
	6	5	6	6	4	6	322	233	186	217

Don't miss checking this fella out, lots of horsepower, moderate maturity pattern and elite carcass values. T4061 ranks in the top 10% of the breed for Heavy Grain (\$GN) and EMA, #9 ranked 600D Growth bull in the sale.



**▽ 87 LAWSONS QUINELLA T4072 AI**

**Birth Date:** 21/8/22 **AM:** AMFU **NH:** NHFU **CA:** CAFU **DD:** DDF  
**Society ID:** VLY22T4072 **ASA:** HBR **Mob:** TVRB **Pen:** 4  
 GAR FAIL SAFE CONNEALY IN SURE 8524  
**Sire:** MOONGENILLA QUINELLA Q33 GAR PROGRESS 830  
 MOOGENILLA N9 EF COMPLEMENT 8088  
 MOOGENILLA L4  
 GAR PROPHET C R A BEXTOR 872 5205 608  
**Dam:** LAWSONS PROPHET P4067 GAR OBJECTIVE 1885  
 LAWSONS SELECTIVE D8248 GAR SELECTIVE  
 LAWSONS ROCKN D AMBUSH X17

August 2021 Trans Tasman Angus Cattle Evaluation										
Calving Ease				Growth and Maternal						
	DIR	DTRS	GL	BWT	200	400	600	MCW	MILK	
EBVs	2.5	7.6	-3.1	3.6	57	111	136	88	27	
Acc	59	47	72	73	74	72	70	68	61	
Fertility				Carcase						
	SS	DC	CWT	RIB	RUMP	EMA	RBV	IMF		
EBVs	2.6	-5.2	81	-0.9	-0.7	10.5	0.1	4.2		
Acc	69	39	61	62	62	61	57	65		
Structural Assessment							\$GN	\$A	\$D	\$GS
	FC	RC	FA	RA	RS	RH				
	6	6	6	6	5	5	368	271	226	259

Retaining semen marketing rights and 50% revenue sharing interest.

T4072 ranks in the top 1% of the breed for Heavy Grain (\$GN) in the sale, top 10% for EMA and the #7 ranked 600D Growth bull in the sale.



**▽ 88 LAWSONS ABUNDANCE T4012 AI**

**Birth Date:** 6/7/22 **AM:** AMFU **NH:** NHFU **CA:** CAFU **DD:** DDC  
**Society ID:** VLY22T4012 **ASA:** HBR **Mob:** TVRB **Pen:** 5  
 GAR ASHLAND GAR EARLY BIRD  
**Sire:** SC ABUNDANCE 42F CHAIR ROCK AMBUSH 1018  
 CHAIR ROCK PROPHET 6054 GAR PROPHET  
 CHAIR ROCK 5050 GAR 1131  
 PARINGA JUDD J5 TUWHARETOA REGENT D145  
**Dam:** LAWSONS JUDD P4001 STRATHWEN BERKLEY WILPEN A F30  
 LAWSONS HENRY VIII J4025 YTHANBRAE HENRY VIII  
 LAWSONS SELECTIVE D8248

August 2021 Trans Tasman Angus Cattle Evaluation										
Calving Ease				Growth and Maternal						
	DIR	DTRS	GL	BWT	200	400	600	MCW	MILK	
EBVs	7.3	-0.6	-8.1	2.6	51	86	109	83	19	
Acc	57	48	72	73	73	71	70	68	62	
Fertility				Carcase						
	SS	DC	CWT	RIB	RUMP	EMA	RBV	IMF		
EBVs	0.3	-3.8	62	-1.5	-1.9	8.7	0.9	2.7		
Acc	66	37	63	62	62	61	56	66		
Structural Assessment							\$GN	\$A	\$D	\$GS
	FC	RC	FA	RA	RS	RH				
	7	6	6	6	4	5	295	218	176	195

Please note DDC carrier status.



**▽ 89 LAWSONS ABUNDANCE T4025 AI**

**Birth Date:** 10/7/22 **AM:** AMFU **NH:** NHFU **CA:** CAFU **DD:** DD2%  
**Society ID:** VLY22T4025 **ASA:** HBR **Mob:** TVRB **Pen:** 5  
 GAR ASHLAND GAR EARLY BIRD  
**Sire:** SC ABUNDANCE 42F CHAIR ROCK AMBUSH 1018  
 CHAIR ROCK PROPHET 6054 GAR PROPHET  
 CHAIR ROCK 5050 GAR 1131  
 GAR MOMENTUM GAR PROGRESS  
**Dam:** LAWSONS MOMENTUM Q4008 GAR BIG EYE 1770  
 LAWSONS PROPHET N4066 GAR PROPHET  
 LAWSONS SURE FIRE L4011

August 2021 Trans Tasman Angus Cattle Evaluation										
Calving Ease				Growth and Maternal						
	DIR	DTRS	GL	BWT	200	400	600	MCW	MILK	
EBVs	1.7	1.8	-6.5	3.5	62	108	139	102	21	
Acc	58	48	72	73	74	72	71	69	63	
Fertility				Carcase						
	SS	DC	CWT	RIB	RUMP	EMA	RBV	IMF		
EBVs	0.2	-3.0	81	-0.1	-0.2	7.6	-0.3	3.8		
Acc	67	37	63	63	62	62	57	66		
Structural Assessment							\$GN	\$A	\$D	\$GS
	FC	RC	FA	RA	RS	RH				
	6	6	6	6	5	5	339	239	186	220

T4025 is what we term as a "double curve-bender" with his exceptional calving ease, high growth and then very moderate MCW. Hard to find bulls like T4025 when you search the entire Angus population! T4025 ranks in the op 5% of the breed for Heavy Grain (\$GN) and equal #3 600D Growth bull in the sale.



**▽ 90 LAWSONS ABUNDANCE T4048 AI**

**Birth Date:** 23/7/22 **AM:** AMFU **NH:** NHFU **CA:** CAFU **DD:** DD7%  
**Society ID:** VLY22T4048 **ASA:** HBR **Mob:** TVRB **Pen:** 5  
**Sire:** SC ABUNDANCE 42F  
 GAR ASHLAND GAR EARLY BIRD  
 CHAIR ROCK PROPHET 6054 CHAIR ROCK AMBUSH 1018  
 CHAIR ROCK PROPHET 6054 CHAIR ROCK 5050 GAR 1131  
**Dam:** LAWSONS MOMENTUM Q4036  
 GAR MOMENTUM GAR PROGRESS  
 LAWSONS SUNRISE N4049 GAR BIG EYE 1770  
 LAWSONS SUNRISE GAR SUNRISE  
 LAWSONS EVIDENT J4028

August 2021 Trans Tasman Angus Cattle Evaluation										
Calving Ease					Growth and Maternal					
	DIR	DTRS	GL	BWT	200	400	600	MCW	MILK	
EBVs	-3.1	-3.4	1.4	5.3	54	96	118	86	23	
Acc	57	47	72	74	73	71	70	69	63	
Fertility			Carcase							
	SS	DC	CWT	RIB	RUMP	EMA	REY	IMF		
EBVs	0.0	-1.7	70	-2.3	-2.7	14.9	2.1	0.8		
Acc	66	37	63	62	62	62	56	66		
Structural Assessment						\$GN	\$A	\$D	\$GS	
	FC	RC	FA	RA	RS	RH				
	6	6	6	6	5	5	280	206	172	182

Loads of muscle in this Abundance son; the #3 EMA bull in the sale at +14.9, top 1% of the breed.



**▽ 91 LAWSONS ABUNDANCE T4057 AI**

**Birth Date:** 1/8/22 **AM:** AMFU **NH:** NHFU **CA:** CAFU **DD:** DDFU  
**Society ID:** VLY22T4057 **ASA:** HBR **Mob:** TVRB **Pen:** 5  
**Sire:** SC ABUNDANCE 42F  
 GAR ASHLAND GAR EARLY BIRD  
 CHAIR ROCK PROPHET 6054 CHAIR ROCK AMBUSH 1018  
 CHAIR ROCK PROPHET 6054 CHAIR ROCK 5050 GAR 1131  
**Dam:** LAWSONS MOMENTOUS R4008  
 LAWSONS MOMENTOUS M518 GAR MOMENTUM  
 LAWSONS INCREDIBLE H4008 LAWSONS AFRICA H229  
 LAWSONS INCREDIBLE H803 LAWSONS INCREDIBLE H803  
 LAWSONS INCREDIBLE L4043 LAWSONS TANK C8532

August 2021 Trans Tasman Angus Cattle Evaluation										
Calving Ease					Growth and Maternal					
	DIR	DTRS	GL	BWT	200	400	600	MCW	MILK	
EBVs	-3.9	-3.3	-4.6	5.8	68	116	152	137	20	
Acc	59	48	72	72	73	71	70	68	62	
Fertility			Carcase							
	SS	DC	CWT	RIB	RUMP	EMA	REY	IMF		
EBVs	2.0	-3.9	80	-4.6	-6.2	10.9	1.2	4.1		
Acc	66	36	62	62	61	61	55	65		
Structural Assessment						\$GN	\$A	\$D	\$GS	
	FC	RC	FA	RA	RS	RH				
	6	5	6	6	5	5	326	239	191	222

Explosive growth in this Abundance son out of a two year old Momentous daughter, top 10% of the breed for Heavy Grain (\$GN), IMF and EMA plus the highest 600D Growth bull in the sale at +152! Dam sells in this sale. Lawsons Momentous R4008 sells PTIC to Moogenilla Quinella Q33 due to calve 25th March 2024.



**▽ 92 LAWSONS MIRACULOUS T4018 AI**

**Birth Date:** 9/7/22 **AM:** AMFU **NH:** NH4% **CA:** CAFU **DD:** DD4%  
**Society ID:** VLY22T4018 **ASA:** HBR **Mob:** TVRB **Pen:** 6  
**Sire:** LAWSONS MIRACULOUS Q44  
 LAWSONS MOMENTOUS M518 GAR MOMENTUM  
 LAWSONS ANTICIPATION K914 LAWSONS AFRICA H229  
 LAWSONS ANTICIPATION K914 GAR ANTICIPATION 7261  
 LAWSONS ANTICIPATION K914 LAWSONS TANK B1155 G625  
**Dam:** LAWSONS BARTEL N4035  
 AYRVALE BARTEL E7 TE MANIA BARTEL B219  
 LAWSONS NOVAK K4029 EAGLEHAWK JEDDA B32  
 LAWSONS NOVAK E313  
 LAWSONS PAYLOAD X951 E8333

August 2021 Trans Tasman Angus Cattle Evaluation										
Calving Ease					Growth and Maternal					
	DIR	DTRS	GL	BWT	200	400	600	MCW	MILK	
EBVs	-4.4	-3.3	-3.3	4.9	60	105	139	137	14	
Acc	57	48	72	73	73	71	71	68	61	
Fertility			Carcase							
	SS	DC	CWT	RIB	RUMP	EMA	REY	IMF		
EBVs	3.6	-4.7	66	-0.8	-0.4	5.6	0.4	1.7		
Acc	68	40	62	63	63	61	57	65		
Structural Assessment						\$GN	\$A	\$D	\$GS	
	FC	RC	FA	RA	RS	RH				
	6	5	6	6	5	5	246	187	154	172

Equal #3 600D Growth bull in the sale and the only son of Lawsons Miraculous Q44 in the sale. Miraculous is the highest registered sire for Eye Muscle area (EMA) in the entire Angus breed at 21.6 EMA, top 1% of the breed.



**▽ 93 LAWSONS MOMENTOUS 4022 AI**

**Birth Date:** 10/7/22 **AM:** AM6% **NH:** NHFU **CA:** CAFU **DD:** DDC  
**Society ID:** VLY22T4022 **ASA:** APR **Mob:** TVRB **Pen:** 6  
**Sire:** LAWSONS MOMENTOUS M518  
 GAR MOMENTUM GAR PROGRESS  
 LAWSONS AFRICA H229 GAR BIG EYE 1770  
 TE MANIA AFRICA A217  
 LAWSONS ROCKND AMBUSH E1103  
**Dam:** LAWSONS INCREDIBLE L4009  
 LAWSONS INCREDIBLE H803 AYRVALE BARTEL E7  
 LAWSONS GAR NEW DESIGN 1407 A853  
 LAWSONS NEW BALL GAME D8073 LAWSONS HENRY VIII X1543

August 2021 Trans Tasman Angus Cattle Evaluation											
Calving Ease				Growth and Maternal							
	DIR	DTRS	GL	BWT	200	400	600	MCW	MILK		
EBVs	-3.7	-4.7	-4.0	6.0	66	112	147	123	23		
Acc	65	56	73	74	75	73	73	72	68		
Fertility				Carcase							
	SS	DC	CWT	RIB	RUMP	EMA	RBV	IMF			
EBVs	4.6	-5.0	83	-3.5	-4.3	7.6	0.6	5.7			
Acc	72	46	67	68	68	66	63	70			
Structural Assessment								\$GN	\$A	\$D	\$GS
	FC	RC	FA	RA	RS	RH					
	7	6	7	6	5	6	345	249	197	239	



Later maturing bull, weighed just under 600kg in August and recorded a 49cm scrotal circumference at scanning. T4033 ranks in the top 5% of the breed for Heavy Grain (\$GN), the #2 ranked 600D Growth bull in the sale, top 10% of the breed. #4 ranked IMF bull in the sale, top 2% percentile ranking in the Angus breed! Please note DDC carrier status.

**▽ 94 LAWSONS MOMENTOUS T4060 AI**

**Birth Date:** 2/8/22 **AM:** AMFU **NH:** NHFU **CA:** CAFU **DD:** DDF  
**Society ID:** VLY22T4060 **ASA:** HBR **Mob:** TVRB **Pen:** 6  
**Sire:** LAWSONS MOMENTOUS M518  
 GAR MOMENTUM GAR PROGRESS  
 LAWSONS AFRICA H229 GAR BIG EYE 1770  
 TE MANIA AFRICA A217  
 LAWSONS ROCKND AMBUSH E1103  
**Dam:** LAWSONS RADIANCE P4058  
 GAR RADIANCE GAR SUNRISE  
 LAWSONS EVIDENT J4027 GAR IN SURE N1022  
 DUNOON EVIDENT E614  
 LAWSONS BOOM TIME C8163

August 2021 Trans Tasman Angus Cattle Evaluation											
Calving Ease				Growth and Maternal							
	DIR	DTRS	GL	BWT	200	400	600	MCW	MILK		
EBVs	-5.6	-6.8	-3.5	4.6	50	87	114	83	20		
Acc	63	54	72	74	74	72	72	71	66		
Fertility				Carcase							
	SS	DC	CWT	RIB	RUMP	EMA	RBV	IMF			
EBVs	2.2	-3.9	59	0.9	1.4	7.9	-1.1	6.8			
Acc	70	44	65	66	66	65	61	68			
Structural Assessment								\$GN	\$A	\$D	\$GS
	FC	RC	FA	RA	RS	RH					
	6	5	6	6	5	5	300	198	139	186	



Incredible breed-leading marbling potential in this Momentous son at +6.8 IMF, top 1% of the breed and the #2 ranked IMF bull in the sale.

**▽ 95 LAWSONS DUAL THREAT T4027 AI**

**Birth Date:** 11/7/22 **AM:** AMFU **NH:** NHFU **CA:** CAFU **DD:** DDF  
**Society ID:** VLY22T4027 **ASA:** HBR **Mob:** TVRB **Pen:** 6  
**Sire:** GAR DUAL THREAT  
 GAR SURE FIRE CONNEALY IN SURE 8524  
 GAR DAYBREAK A3010 CHAIR ROCK 5050 GAR 8086  
 MCC DAYBREAK  
 GAR 5050 NEW DESIGN A91  
**Dam:** LAWSONS GENERAL J4036  
 LAWSONS GENERAL G1730 LAWSONS TANK B1155  
 LAWSONS SCHWARZENEGGER D1720  
 YTHANBRAE HENRY VIII  
 LAWSONS YIELD GRADE Z550

August 2021 Trans Tasman Angus Cattle Evaluation											
Calving Ease ✓				Growth and Maternal							
	DIR	DTRS	GL	BWT	200	400	600	MCW	MILK		
EBVs	4.0	3.0	-5.8	4.3	54	98	121	88	16		
Acc	57	45	72	74	73	70	70	68	63		
Fertility				Carcase							
	SS	DC	CWT	RIB	RUMP	EMA	RBV	IMF			
EBVs	1.9	-5.7	78	-1.5	-1.6	19.2	2.8	0.2			
Acc	66	37	63	63	62	62	57	66			
Structural Assessment								\$GN	\$A	\$D	\$GS
	FC	RC	FA	RA	RS	RH					
	6	5	5	5	5	5	342	275	242	259	



Interesting outcross pedigree here with this Dual Threat son. T4027 is the highest EMA bull in the sale at +19.2, top 1% of the breed, backed up by his actual scan or 101 sq cm and that data will be included in TACE run prior to the sale so look for updated EBVs on-line. T4027 also ranks in the top 5% of the breed for Heavy Grain (\$GN).



**▽ 96 LAWSONS JUDD Q4035 AI**

Birth Date: 10/9/19 AM: AM3% NH: NHFU CA: CAFU DD: DD3%

Society ID: VLYQ4035 ASA: APR Mob: VRF523 Pen: 7

Sire: **PARINGA JUDD J5**  
 TUWHARETOA REGENT D145 TE MANIA AMBASSADOR A134  
 STRATHEWEN BERKLEY WILPENA F30 TE MANIA HENRY VIII Y5  
 STRATHEWEN IN FOCUS WILPENA B41

Dam: **LAWSONS INCREDIBLE L4040**  
 LAWSONS INCREDIBLE H803 AYRVALE BARTEL E7  
 LAWSONS NOVAK J4038 LAWSONS DINKY DI E447  
 LAWSONS NOVAK E313 LAWSONS SOLUTION D8313

August 2023 Trans Tasman Angus Cattle Evaluation										
Calving Ease				Growth and Maternal						
	DIR	DTRS	GL	BWT	200	400	600	MCW	MILK	
EBVs	2.4	-2.0	-2.5	5.0	55	95	126	98	20	
Acc	61	52	66	76	67	66	65	64	62	
Fertility			Carcase							
	SS	DC	CWT	RIB	RUMP	EMA	RBV	IMF		
EBVs	2.80	-6.70	80	0.7	1.3	11.1	0.7	3.0		
Acc	62	45	60	61	60	59	58	60		
Structural Assessment						\$GN	\$A	\$D	\$GS	
	FC	RC	FA	RA	RS	RH				
							335	256	208	244



Sells PTIC to GAR Home Town AI'd 7/7/23 and due to calve 15 April 2024. Dam of Lot 73 Lawsons Home Town T4075 that sells in this sale. Please note APR status.

**▽ 97 LAWSONS MOMENTUM Q4038 AI**

Birth Date: 2/9/19 AM: AMFU NH: NH2% CA: CAFU DD: DDFU

Society ID: VLYQ4038 ASA: HBR Mob: VRF523 Pen: 7

Sire: **GAR MOMENTUM**  
 GAR PROGRESS GAR PREDESTINED  
 GAR BIG EYE 1770 ALC BIG EYE D09N  
 GAR OBJECTIVE 3387

Dam: **LAWSONS SUNRISE M4059**  
 GAR SUNRISE MCC DAYBREAK  
 LAWSONS EQUATOR D8214 WILSONS DOWN EQUATOR V191  
 LAWSONS ROCKN D AMBUSH X786

August 2023 Trans Tasman Angus Cattle Evaluation										
Calving Ease				Growth and Maternal						
	DIR	DTRS	GL	BWT	200	400	600	MCW	MILK	
EBVs	0.0	0.7	-0.7	2.6	45	83	101	78	19	
Acc	62	52	64	76	68	66	66	65	62	
Fertility			Carcase							
	SS	DC	CWT	RIB	RUMP	EMA	RBV	IMF		
EBVs	1.30	-4.40	52	0.2	0.6	8.2	0.1	3.7		
Acc	63	45	61	61	61	59	58	61		
Structural Assessment						\$GN	\$A	\$D	\$GS	
	FC	RC	FA	RA	RS	RH				
							276	199	162	181



Sells PTIC to Moogenilla Quinella Q33 AI'd 16/6/23 and due to calve 25 March 2024. Q4038 is the dam of donor VLYS4008 in our current ET program.

**▽ 98 LAWSONS ASHLAND R4006 AI**

Birth Date: 22/8/20 AM: AMFU NH: NHFU CA: CAFU DD: DDC

Society ID: VLYR4006 ASA: HBR Mob: VRF523 Pen: 7

Sire: **GAR ASHLAND**  
 GAR EARLY BIRD GAR DAYLIGHT  
 CHAIR ROCK AMBUSH 1018 GAR PROGRESS 830  
 B/R AMBUSH 28

Dam: **LAWSONS JUDD P4001**  
 PARINGA JUDD J5 TUWHARETOA REGENT D145  
 LAWSONS HENRY VIII J4025 STRATHEWEN BERKLEY WILPENA F30  
 LAWSONS SELECTIVE D8248

August 2023 Trans Tasman Angus Cattle Evaluation										
Calving Ease				Growth and Maternal						
	DIR	DTRS	GL	BWT	200	400	600	MCW	MILK	
EBVs	8.6	-1.0	-7.3	2.6	57	102	135	123	19	
Acc	65	55	72	76	75	73	73	72	67	
Fertility			Carcase							
	SS	DC	CWT	RIB	RUMP	EMA	RBV	IMF		
EBVs	-0.10	-3.40	82	-0.3	0.8	10.7	0.6	3.6		
Acc	70	41	66	66	66	65	61	68		
Structural Assessment						\$GN	\$A	\$D	\$GS	
	FC	RC	FA	RA	RS	RH				
							331	239	185	220



Sells PTIC to Moogenilla Quinella Q33 AI'd 16/6/23 and due to calve 25 March 2024.

**▽ 99 LAWSONS MOMENTOUS R4008 AI**

**Birth Date:** 23/8/20 **AM:** AMFU **NH:** NHFU **CA:** CAFU **DD:** DDF  
**Society ID:** VLYR4008 **ASA:** HBR **Mob:** VRFS23 **Pen:** 7  
**Sire:** LAWSONS MOMENTOUS M518  
 GAR MOMENTUM GAR PROGRESS  
 LAWSONS AFRICA H229 GAR BIG EYE 1770  
 TE MANIA AFRICA A217  
 LAWSONS ROCKND AMBUSH E1103  
**Dam:** LAWSONS INCREDIBLE L4043  
 LAWSONS INCREDIBLE H803 AYRVALE BARTEL E7  
 LAWSONS DINKY DI E447  
 LAWSONS TANK X1235  
 LAWSONS TANK C8532 LAWSONS EXPECTATION Y1836

August 2023 Trans Tasman Angus Cattle Evaluation										
Calving Ease					Growth and Maternal					
	DIR	DTRS	GL	BWT	200	400	600	MCW	MILK	
EBVs	1.4	-2.9	-5.0	3.5	51	93	115	100	19	
Acc	65	55	72	76	75	73	73	72	68	
Fertility					Carcass					
	SS	DC	CWT	RIB	RUMP	EMA	RBV	IMF		
EBVs	2.60	-4.00	56	-3.0	-4.2	13.9	1.7	3.2		
Acc	70	46	67	67	67	66	63	69		
Structural Assessment										
	FC	RC	FA	RA	RS	RH	\$GN	\$A	\$D	\$GS
							291	219	183	202

Sells PTIC to Moogenilla Quinella Q33 AI'd 16/6/23 and due to calve 25 March 2024. Dam of Lot 91 Lawsons Abundance T4057 in this sale. Dam Lawsons Incredible L4043 has just had her 7th calf so good longevity in this maternal line.



**▽ 100 LAWSONS KODAK R4043 AI**

**Birth Date:** 20/9/20 **AM:** AMFU **NH:** NHFU **CA:** CAFU **DD:** DD4%  
**Society ID:** VLYR4043 **ASA:** HBR **Mob:** VRFS23 **Pen:** 7  
**Sire:** RENNYLEA KODAK K522  
 RENNYLEA EDMUND E11 BOOROOMOOKA UNDERTAKEN Y145  
 LAWSONS HENRY VIII Y5  
 TE MANIA BERKLEY B1  
 RENNYLEA EISA ERICA C299  
**Dam:** LAWSONS JUDD L4024  
 PARINGA JUDD J5 TUWHARETOA REGENT D145  
 STRATHEWEN BERKLEY WILPENA F30  
 YTHANBRAE PONO V346  
 LAWSONS HENRY VIII X1717  
 LAWSONS PONO V346 B27

August 2023 Trans Tasman Angus Cattle Evaluation										
Calving Ease					Growth and Maternal					
	DIR	DTRS	GL	BWT	200	400	600	MCW	MILK	
EBVs	10.0	8.5	-4.2	0.8	39	81	108	91	20	
Acc	64	54	73	76	76	74	74	73	69	
Fertility					Carcass					
	SS	DC	CWT	RIB	RUMP	EMA	RBV	IMF		
EBVs	3.10	-5.90	54	1.6	1.6	2.1	-0.8	5.2		
Acc	72	47	68	68	68	67	64	70		
Structural Assessment										
	FC	RC	FA	RA	RS	RH	\$GN	\$A	\$D	\$GS
							268	200	157	190

Sells PTIC to Lawsons Rocky R4010 AI'd 16/6/23 and due to calve 25 March 2024. Dam Lawsons Judd L4024 has just had her 7th calf.



**▽ 101 LAWSONS MOMENTOUS S4007 AI**

**Birth Date:** 6/8/21 **AM:** AM1% **NH:** NHFU **CA:** CAFU **DD:** DD1%  
**Society ID:** VLY21S4007 **ASA:** APR **Mob:** VRFS23 **Pen:** 7  
**Sire:** LAWSONS MOMENTOUS M518  
 GAR MOMENTUM GAR PROGRESS  
 LAWSONS AFRICA H229 GAR BIG EYE 1770  
 TE MANIA AFRICA A217  
 LAWSONS ROCKND AMBUSH E1103  
**Dam:** LAWSONS JUDD Q4034  
 PARINGA JUDD J5 TUWHARETOA REGENT D145  
 STRATHEWEN BERKLEY WILPENA F30  
 LAWSONS INCREDIBLE H803  
 LAWSONS NOVAK J4038  
 LAWSONS INCREDIBLE L4040

August 2023 Trans Tasman Angus Cattle Evaluation										
Calving Ease					Growth and Maternal					
	DIR	DTRS	GL	BWT	200	400	600	MCW	MILK	
EBVs	0.8	-2.5	-4.3	4.0	50	90	114	85	22	
Acc	61	52	64	73	68	65	65	64	61	
Fertility					Carcass					
	SS	DC	CWT	RIB	RUMP	EMA	RBV	IMF		
EBVs	2.60	-4.80	61	0.1	0.6	12.3	0.6	4.4		
Acc	62	44	61	62	61	60	58	62		
Structural Assessment										
	FC	RC	FA	RA	RS	RH	\$GN	\$A	\$D	\$GS
							326	237	188	223

Sells PTIC to Moogenilla Quinella Q33 AI'd 16/6/23 and due to calve 25 March 2024. Please note APR status.



**102 LAWSONS MOMENTOUS S4011 AI**

**Birth Date:** 8/8/21 **AM:** AMFU **NH:** NHFU **CA:** CAFU **DD:** DDFU  
**Society ID:** VLY21S4011 **ASA:** HBR **Mob:** VRF523 **Pen:** 7  
**Sire:** GAR MOMENTUM GAR PROGRESS  
**LAWSONS MOMENTOUS M518** GAR BIG EYE 1770  
 LAWSONS AFRICA H229 TE MANIA AFRICA A217  
 LAWSONS ROCKND AMBUSH E1103  
**Dam:** AYRVALE BARTEL E7 TE MANIA BARTEL B219  
**LAWSONS BARTEL Q4013** EAGLEHAWK JEDDA B32  
 LAWSONS JUDD N4018 PARINGA JUDD J5  
 LAWSONS NOVAK K4035

August 2023 Trans Tasman Angus Cattle Evaluation											
Calving Ease					Growth and Maternal						
	DIR	DTRS	GL	BWT	200	400	600	MCW	MILK		
EBVs	-2.8	0.0	-1.3	4.8	57	100	130	111	18		
Acc	64	56	71	73	74	72	72	71	67		
Fertility			Carcase								
	SS	DC	CWT	RIB	RUMP	EMA	REY	IMF			
EBVs	3.80	-3.80	65	-1.9	-1.7	5.2	0.4	4.0			
Acc	70	48	66	67	67	66	62	69			
Structural Assessment								\$GN	\$A	\$D	\$GS
	FC	RC	FA	RA	RS	RH					
							282	207	166	192	

Sells PTIC to GAR Home Town AI'd 7/7/23 and due to calve 15 April 2024.



**103 LAWSONS GENUINE S4024 AI**

**Birth Date:** 11/8/21 **AM:** AM4% **NH:** NHFU **CA:** CAFU **DD:** DD3%  
**Society ID:** VLY21S4024 **ASA:** HBR **Mob:** VRF523 **Pen:** 7  
**Sire:** GAR GENUINE S A V FINAL ANSWER 0035  
 GAR DAYBREAK 342 THOMAS MISS LUCY 5152  
 MCC DAYBREAK  
 GAR 5050 NEW DESIGN 1039  
**Dam:** GAR PROPHET C R A BEXTOR 872 5205 608  
**LAWSONS PROPHET P4024** GAR OBJECTIVE 1885  
 LAWSONS KING ISLAND BEEF Z1292  
 LAWSONS KING ISLAND BEEF D8014 LAWSONS PARAMOUNT X147B

August 2023 Trans Tasman Angus Cattle Evaluation											
Calving Ease					Growth and Maternal						
	DIR	DTRS	GL	BWT	200	400	600	MCW	MILK		
EBVs	6.6	4.6	-4.9	2.6	55	97	121	90	15		
Acc	58	47	72	74	73	72	71	69	63		
Fertility			Carcase								
	SS	DC	CWT	RIB	RUMP	EMA	REY	IMF			
EBVs	2.70	-5.60	66	-1.6	-2.5	9.7	0.9	3.2			
Acc	69	40	63	64	64	63	58	66			
Structural Assessment								\$GN	\$A	\$D	\$GS
	FC	RC	FA	RA	RS	RH					
							333	255	216	240	

Sells PTIC to Lawsons Rocky R4010 AI'd 7/7/23 and due to calve 15 April 2024.



**104 LAWSONS MOMENTOUS S4029 AI**

**Birth Date:** 14/8/21 **AM:** AMFU **NH:** NHFU **CA:** CAFU **DD:** DD7%  
**Society ID:** VLY21S4029 **ASA:** HBR **Mob:** VRF523 **Pen:** 7  
**Sire:** GAR MOMENTUM GAR PROGRESS  
**LAWSONS MOMENTOUS M518** GAR BIG EYE 1770  
 LAWSONS AFRICA H229 TE MANIA AFRICA A217  
 LAWSONS ROCKND AMBUSH E1103  
**Dam:** GAR SUNRISE MCC DAYBREAK  
**LAWSONS SUNRISE M4054** GAR OBJECTIVE R227  
 LAWSONS EVIDENT J4028 DUNOON EVIDENT E614  
 LAWSONS SWAGMAN D8197

August 2023 Trans Tasman Angus Cattle Evaluation											
Calving Ease					Growth and Maternal						
	DIR	DTRS	GL	BWT	200	400	600	MCW	MILK		
EBVs	-9.6	-5.6	-2.7	5.3	46	85	108	85	21		
Acc	63	54	72	74	75	73	73	72	68		
Fertility			Carcase								
	SS	DC	CWT	RIB	RUMP	EMA	REY	IMF			
EBVs	1.90	-4.20	61	1.8	2.7	10.1	0.3	3.8			
Acc	71	46	67	67	67	66	62	69			
Structural Assessment								\$GN	\$A	\$D	\$GS
	FC	RC	FA	RA	RS	RH					
							262	185	143	169	

Sells PTIC to Moogenilla Quinella Q33 AI'd 16/6/23 and due to calve 25 March 2024.



**▽ 105 LAWSONS MOMENTOUS S4040 AI**

**Birth Date:** 16/8/21 **AM:** AMFU **NH:** NHFU **CA:** CAFU **DD:** DDFU  
**Society ID:** VLY21S4040 **ASA:** HBR **Mob:** VRFS23 **Pen:** 7  
**Sire:** LAWSONS MOMENTOUS M518  
 GAR MOMENTUM  
 LAWSONS AFRICA H229  
**Dam:** LAWSONS INCREDIBLE L4052  
 LAWSONS INCREDIBLE H803  
 LAWSONS NOVAK J4034  
 GAR PROGRESS  
 GAR BIG EYE 1770  
 TE MANIA AFRICA A217  
 LAWSONS ROCKND AMBUSH E1103  
 AYRVALE BARTEL E7  
 LAWSONS DINKY DI E447  
 LAWSONS NOVAK E313  
 LAWSONS TANK C8532

August 2023 Trans Tasman Angus Cattle Evaluation										
Calving Ease				Growth and Maternal						
	DIR	DTRS	GL	BWT	200	400	600	MCW	MILK	
EBVs	-10.5	-6.2	-2.9	7.0	63	106	138	122	23	
Acc	65	56	74	75	75	73	73	72	68	
Fertility				Carcase						
	SS	DC	CWT	RIB	RUMP	EMA	RBV	IMF		
EBVs	2.20	-5.50	75	-1.2	-2.0	7.3	0.1	4.4		
Acc	70	47	67	68	68	66	63	69		
Structural Assessment						\$GN	\$A	\$D	\$GS	
	FC	RC	FA	RA	RS	RH				
							294	209	164	193

Sells PTIC to Moogenilla Quinella Q33 AI'd 16/6/23 and due to calve 25 March 2024.



Vince and Debbie Rheinberger, Box Range Boorowa.

**▽ 106 LAWSONS RELIANT S4046 AI**

**Birth Date:** 18/8/21 **AM:** AMFU **NH:** NHFU **CA:** CAFU **DD:** DD3%  
**Society ID:** VLY21S4046 **ASA:** HBR **Mob:** VRFS23 **Pen:** 7  
**Sire:** GAR RELIANT  
 GAR SURE FIRE  
 GAR DESTINATION N244  
**Dam:** LAWSONS PROPHET N4060  
 LAWSONS NOVAK K4031  
 CONNEALY IN SURE 8524  
 CHAIR ROCK 5050 GAR 8086  
 B/R DESTINATION 727-928  
 GAR PREDESTINED 3279  
 C R A BEXTOR 872 5205 608  
 GAR OBJECTIVE 1885  
 LAWSONS NOVAK E313  
 LAWSONS BOOM TIME C8163

August 2023 Trans Tasman Angus Cattle Evaluation										
Calving Ease				Growth and Maternal						
	DIR	DTRS	GL	BWT	200	400	600	MCW	MILK	
EBVs	0.8	1.1	-1.2	3.4	45	78	94	63	14	
Acc	59	48	72	74	73	72	72	69	62	
Fertility				Carcase						
	SS	DC	CWT	RIB	RUMP	EMA	RBV	IMF		
EBVs	1.50	-6.20	48	0.9	0.9	9.7	0.4	4.4		
Acc	69	42	63	65	64	64	59	67		
Structural Assessment						\$GN	\$A	\$D	\$GS	
	FC	RC	FA	RA	RS	RH				
							320	237	195	221

Sells PTIC to Lawsons Rocky R4010 AI'd 16/6/23 and due to calve 25 March 2024.



**▽ 107 LAWSONS QUANTUM S4057 AI**

**Birth Date:** 6/9/21 **AM:** AMFU **NH:** NHFU **CA:** CAFU **DD:** DDF  
**Society ID:** VLY21S4057 **ASA:** HBR **Mob:** VRFS23 **Pen:** 7  
**Sire:** GAR QUANTUM  
 GAR MOMENTUM  
 GAR IN SURE 1524  
**Dam:** LAWSONS BARTEL E7 K4002  
 LAWSONS TANK C8532  
 GAR PROGRESS  
 GAR BIG EYE 1770  
 CONNEALY IN SURE 8524  
 GAR COMPLETE 3011  
 TE MANIA BARTEL B219  
 EAGLEHAWK JEDDA B32  
 LAWSONS TANK X1235  
 LAWSONS EXPECTATION Y1836

August 2023 Trans Tasman Angus Cattle Evaluation										
Calving Ease				Growth and Maternal						
	DIR	DTRS	GL	BWT	200	400	600	MCW	MILK	
EBVs	2.2	1.9	-1.4	4.1	53	92	116	81	21	
Acc	59	49	72	74	73	72	71	69	64	
Fertility				Carcase						
	SS	DC	CWT	RIB	RUMP	EMA	RBV	IMF		
EBVs	1.30	-5.90	77	0.4	1.4	7.2	0.6	1.6		
Acc	69	41	64	64	64	63	59	67		
Structural Assessment						\$GN	\$A	\$D	\$GS	
	FC	RC	FA	RA	RS	RH				
							308	237	199	217

Sells PTIC to Lawsons Rocky R4010 AI'd 7/7/23 and due to calve 15 April 2024.



**▽ 108 LAWSONS MOMENTOUS S4058 AI**

Birth Date: 6/9/21 AM: AMFU NH: NH8% CA: CAFU DD: DD8%

Society ID: VLY21S4058 ASA: HBR Mob: VRF523 Pen: 7

Sire: GAR MOMENTUM  
**LAWSONS MOMENTOUS M518**  
 LAWSONS AFRICA H229

Dam: LAWSONS NOVAK E313  
**LAWSONS NOVAK K4029**  
 LAWSONS PAYLOAD X951 E8333

August 2023 Trans Tasman Angus Cattle Evaluation											
	Calving Ease			Growth and Maternal							
	DIR	DTRS	GL	BWT	200	400	600	MCW	MILK		
EBVs	<b>-5.0</b>	<b>-7.2</b>	<b>-0.3</b>	<b>3.0</b>	<b>43</b>	<b>73</b>	<b>90</b>	<b>72</b>	<b>20</b>		
Acc	65	56	72	75	75	73	73	72	69		
	Fertility			Carcase							
	SS	DC	CWT	RIB	RUMP	EMA	RBV	IMF			
EBVs	<b>2.20</b>	<b>-3.90</b>	<b>43</b>	<b>0.1</b>	<b>-0.2</b>	<b>1.3</b>	<b>-0.6</b>	<b>5.5</b>			
Acc	71	47	67	67	68	66	62	69			
Structural Assessment								\$GN	\$A	\$D	\$GS
	FC	RC	FA	RA	RS	RH		231	155	116	134

Sells PTIC to Moogenilla Quinella Q33 AI'd 16/6/23 and due to calve 25 March 2024.

**▽ 109 LAWSONS MOMENTOUS S4069 AI**

Birth Date: 20/9/21 AM: AMFU NH: NH4% CA: CAFU DD: DD6%

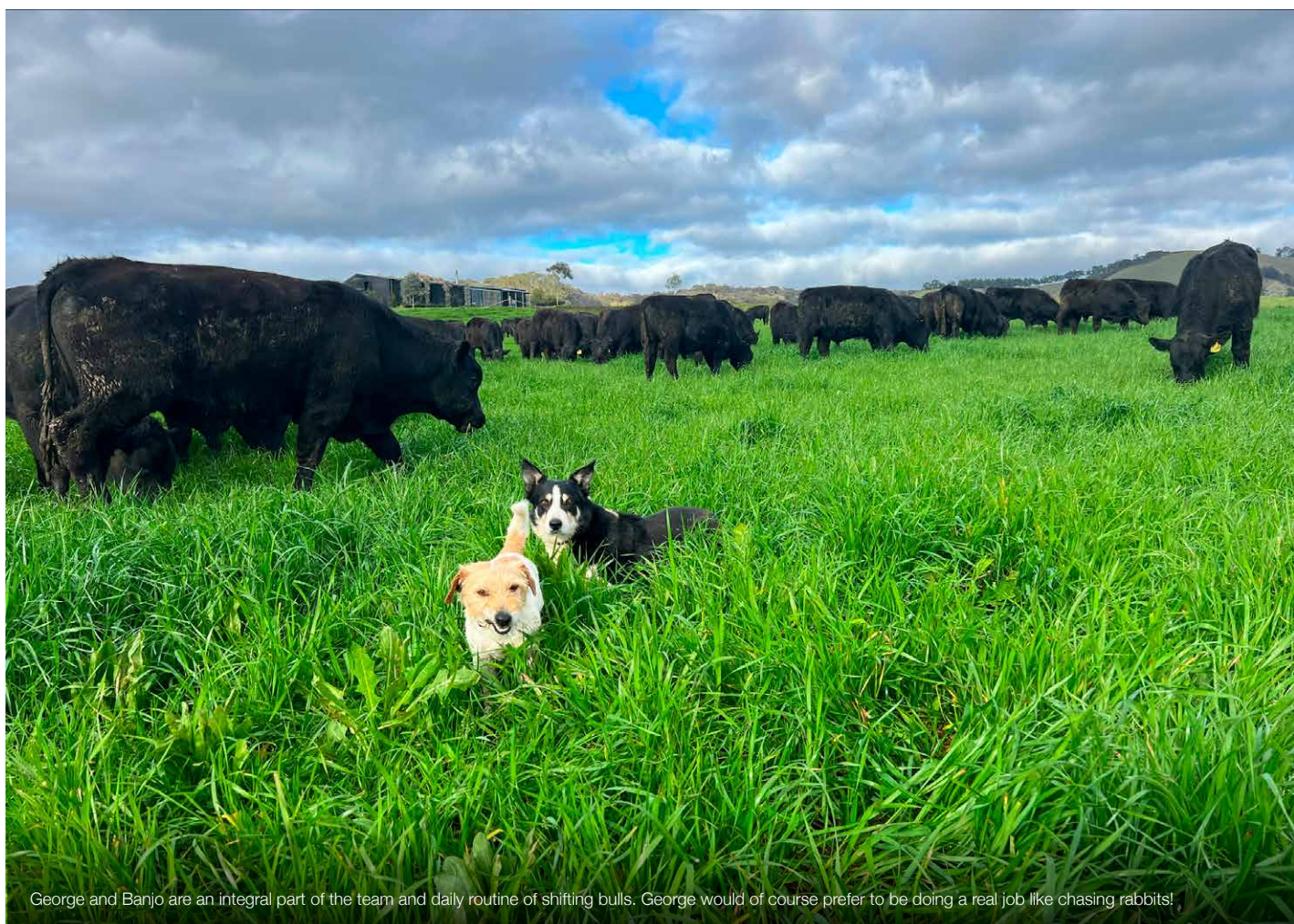
Society ID: VLY21S4069 ASA: HBR Mob: VRF523 Pen: 7

Sire: GAR MOMENTUM  
**LAWSONS MOMENTOUS M518**  
 LAWSONS AFRICA H229

Dam: PARINGA JUDD J5  
**LAWSONS JUDD P4018**  
 LAWSONS OBJECTIVE E8500

August 2023 Trans Tasman Angus Cattle Evaluation											
	Calving Ease			Growth and Maternal							
	DIR	DTRS	GL	BWT	200	400	600	MCW	MILK		
EBVs	<b>-8.7</b>	<b>-6.9</b>	<b>-1.8</b>	<b>6.2</b>	<b>55</b>	<b>99</b>	<b>137</b>	<b>135</b>	<b>19</b>		
Acc	65	56	73	74	74	73	73	72	68		
	Fertility			Carcase							
	SS	DC	CWT	RIB	RUMP	EMA	RBV	IMF			
EBVs	<b>0.90</b>	<b>-4.10</b>	<b>77</b>	<b>-1.1</b>	<b>-1.0</b>	<b>6.9</b>	<b>0.1</b>	<b>4.9</b>			
Acc	71	47	67	67	68	66	62	69			
Structural Assessment								\$GN	\$A	\$D	\$GS
	FC	RC	FA	RA	RS	RH		260	183	133	168

Sells PTIC to Moogenilla Quinella Q33 AI'd 16/6/23 and due to calve 25 March 2024.



George and Banjo are an integral part of the team and daily routine of shifting bulls. George would of course prefer to be doing a real job like chasing rabbits!

# SALE CONDITIONS

## BUYERS REBATE

All lots will be sold subject to the usual conditions governing auction sales. Rebate of 3% is available to outside agents who attend the sale or introduce their client prior to sale day, and settle on behalf of clients within 7 days. Please email introductions to lawsons@lawsonsangus.com.au. If agents are nominated to settle on behalf of clients on sale day and do not attend 1% rebate will be applied.

## DELIVERY OF SALE BULLS

Lawsons Angus and Selling Agents will do our best to assist in the efficient and safe delivery of your bulls. Buyers, please ensure bulls are insured at the fall of the hammer as our insurance does not cover injury of bulls in transit. Buyers must organise cartage of bulls at their own expense.

## REGISTRATION STATUS AND TRANSFER OF BULLS

Most bulls on offer are Registered Herd Book animals with the Angus Society of Australia (ASA). Registration status of bulls is shown in the catalogue. 'H' indicates the animal is registered in the ASA Herd Book, 'A' indicates bulls are registered with ASA Performance Register (APR). All bulls will be transferred to purchaser at no cost on request. Non-transfer commercial bulls are denoted 'NT' or 'COM' status.

## HEALTH STATUS OF BULLS

All bulls have been independently semen and morphology tested including a physical evaluation of the bulls reproductive tract.

**All bulls offered in this sale have been vaccinated with Ultravac 7 in 1, Vibriosis, Pesti Guard (BVD).**

## 3 YEAR BULL GUARANTEE

All bulls have undergone rigorous and independent assessments for fertility, including a semen test and physical evaluation of the bulls reproductive tract. On top of this we offer the strongest guarantee of any seedstock herd in Australia.

All breeding cattle sold by Lawsons Angus are fertile and structurally sound to the best of our knowledge. If a bull becomes infertile or breaks down due to reasons other than injury or misadventure, at any time in the next 36 months, we will:

1. provide you with a satisfactory replacement if available, or
2. issue you with a credit equal to purchase price minus salvage value, that may be used to purchase any animal in future Lawsons Angus sales.

The Lawsons Angus 3 year bull guarantee is not a life insurance policy. Normal care needs to be taken as we cannot replace an animal that is injured or dies for any reason. We recommend you insure animals against injury. An insurance service will be available on sale day.

This guarantee is in addition to normal terms and conditions governing auction sales, and as such the discretion and final decision as to issuing a credit will be with the vendor. Any credit will be limited to bull purchase price less salvage value and not include any costs, damages or loss of income incurred as a result of claims under this guarantee.

## OUR 3 YEAR BULL GUARANTEE IS THE GREATEST WARRANTY PROVIDED BY ANY SEEDSTOCK HERD IN AUSTRALIA.

## CALVING EASE

We have included a red tick in summary pages and individual catalogue information for bulls that we recommend are suitable to use in most situations over yearling heifers. Most of these bulls are  $\geq 1.8$  for Calving Ease Direct (DIR) and less than breed average birth weight ( $\leq 4.3$  Birth Weight EBVs). We believe this combination gives you the best risk management guide for selecting bulls to mate yearling heifers and simplifies the information so that you can focus on improving other key economic traits.

We urge breeders not to over analyse this information and narrow down selection options as is often the case. There are a few exceptions that we have made to these EBVs criteria, but we believe these bulls to also be safe calving ease candidates. Individual herds may use bulls outside this recommended range depending on their maternal herd and production system, but these are our recommended 'safe' heifer specifications and they are working well for commercial beef herds.

We also recommend you talk to us about helping to develop a pre-calving heifer **management** plan that can be used in conjunction with these EBV specifications to achieve predictable calving ease and rebreeding results for two year old heifers. Remember management of heifers is equally important as the **genetic** potential of the sires and dams to optimise calving and reproductive performance of heifers.

## DISCLAIMER

Animal details included in this catalogue, including but not limited to pedigree, DNA information, Estimated Breeding Values (EBVs) and Index values, are based on information provided by the breeder or owner of the animal. Whilst all reasonable care has been taken to ensure that the information provided in this catalogue was correct at the time of publication, neither the vendor, Angus Australia or the selling agents assume any responsibility for the accuracy or completeness of the information, nor for the outcome (including consequential loss) of any action taken based on this information. Buyers should also note other Sale Conditions listed on this page including those under "3 Year Guarantee".

# A BRIEF DESCRIPTION OF EBVS AND \$INDEX VALUES

**The following is a brief description of EBVs and \$Index values and Accuracies. For a more detailed explanation please refer to Angus Society of Australia web site ([www.angusaustralia.com.au](http://www.angusaustralia.com.au)).**

**ACCURACY (%)** ~ Provides an indication of the reliability of an EBV. As more performance information becomes available on an animal (or it's progeny, or relatives) then the accuracy of it's EBVs for particular traits will increase.

**CALVING EASE DIR (%)**  
~ Estimates of the genetic differences between animals in the ability of their calves, from 2 year old heifers, to be delivered without assistance.

**CALVING EASE DTRS (%)**  
~ Estimates of the genetic differences between animals in the ability of their 2 year old daughters to calve without assistance.

**GESTATION LENGTH (DAYS)**  
~ Estimates of the genetic differences between animals in the number of days from the date of conception to the calf birth date.

**BIRTH WT (KG)** ~ Estimates of the genetic differences between animals in calf birth weight.

**200-DAY WT (KG)** ~ Estimates of the genetic differences between animals in liveweight at 200 days of age.

**400-DAY WT (KG)** ~ Estimates of the genetic differences between animals in liveweight at 400 days of age.

**600-DAY WT (KG)** ~ Estimates of the genetic differences between animals in liveweight at 600 days of age.

**MATURE COW WEIGHT (KG)** ~ Estimates of the genetic differences between animals in cow weight at 5 years of age.

**MILK (KG)** ~ Estimates of the genetic differences between animals in milk and animals in percentage retail beef yield, in a 300kg carcase.

**INTRA-MUSCULAR FAT % (IMF%)** ~ Estimates of the genetic differences between animals in percentage intra-muscular fat (marbling) at the 12/13th rib site, in a 300 kg carcase.

**ANGUS BREEDING INDEX**  
~ Estimates the genetic differences between animals in net profitability per cow joined in a typical commercial self replacing herd using Angus bulls. This selection index is not specific to a particular production system or market end-point, but identifies animals

that will improve overall profitability in the majority of commercial grass and grain finishing beef production systems. The index is particularly suited to commercial producers who sell progeny into different markets, or to seedstock producers supplying bulls to commercial clients who produce for a range of different production systems and market end points.

**DOMESTIC INDEX** ~ Estimates the genetic differences between animals in net profitability per cow joined in a commercial self replacing herd targeting the domestic supermarket trade, with progeny finished using either grass, grass supplemented by grain or grain finishing systems.

**HEAVY GRAIN INDEX** ~ Estimates the genetic differences between animals in net profitability per cow joined in a commercial self replacing herd targeting pasture grown steers with a 200 day feedlot finishing period for the grain fed high quality, highly marbled markets.

**HEAVY GRASS INDEX** ~ Estimates the genetic differences between animals in net profitability per cow joined in a commercial self replacing herd targeting pasture finished heavy steers.





**Harry Lawson**

0407 101 145

lawsons@lawsonsangus.com.au

**LAWSONSANGUS.COM.AU**