



LOW
CARBON
BEEF

“BREEDING BULLS IS NOTORIOUSLY
DRIVEN BY FADS, NOT FACTS. AT
LAWSONS ANGUS WE BELIEVE IN
PROVEN SCIENCE.”

Harry Lawson
— HARRY LAWSON

LAWSONS ANGUS 2022
ROMA SALE

11AM FRIDAY 29TH JULY
AT THE ROMA SALEYARDS, QUEENSLAND

80

ANGUS BULLS
SELL

SCIENCE NOT FICTION

LAWSONS
angus

“MORE FERTILE COWS, RELIABLE
HIGH ACCURACY CALVING
EASE, FASTER GROWING,
MORE EFFICIENT CALVES AND
SUPERIOR CARCASE TRAITS.”

Harry Lawson

— HARRY LAWSON





2022 QLD ROMA SALE

11AM FRIDAY 29TH JULY
AT THE ROMA SALEYARDS, QUEENSLAND



SELLING AGENTS



Andrew Holt 0427 088 996
andrew.holt@nutrien.com.au

Colby Ede 0417 265 980
colby.ede@nutrien.com.au

Nutrien Roma 07 4622 1088

AUCTION INTERFACED WITH



Market Operations (02) 9262 4222
mktops@auctionsplus.com.au

LAWSONS ANGUS



Harry Lawson 0407 101 145
lawsons@lawsonsangus.com.au

WELCOME TO OUR 2022 ROMA SALE

Welcome to our 2022 Roma Sale at **11am Friday 29th July**, once again to be held Roma Sale yards complex. We have an exciting group of 87 Sale Bulls catalogued for this years' Sale with 52 two-year old bulls and 35 14-16 month old bulls. Hopefully this year we will get an opportunity to meet many of you again, we enjoy the interaction with our clients and understanding your production systems is important for us as well.

I WAS FORTUNATE TO ATTEND THE BEEF IMPROVEMENT FEDERATION (BIF) CONFERENCE IN EARLY JUNE 2022 AT LAS CRUCES, NEW MEXICO AND I VISITED SOME INTERESTING RANCHES AND FEEDLOTS ON NEW MEXICO, TEXAS AND KANSAS.

I also visited one of Vytelle's new IVF embryo labs and embryo collection centres and this technology will open up more opportunities to accelerate genetic progress globally. BIF is an opportunity to try and keep up with new animal breeding research and the big challenge for us is to sort this research into priorities and think about the potential applications and benefits to our clients. It's a big academic workout and also an opportunity to visit with many friends and colleagues.

Next year's BIF Conference is in Calgary, Alberta, Canada July 3-6th just prior to the Calgary Stampede and I would recommend this for any progressive beef producer. Please feel free to discuss with me if you are contemplating making the trip next year.

My US trip also included a few days at Gardiner Angus Ranch (GAR). We always try and go to the US with a wide lens but there is no doubt GAR are the leading Angus seedstock herd in the world and we are very fortunate to have a 30 year partnership and friendship with the Gardiner family. It is largely what keeps us and in turn your breeding herds at the forefront of multi-trait excellence with unmatched end-product value!

Gardiner's were a founding shareholder in US Premium Beef that are now one of the largest beef processors in the US. Over 2021 and start of 2022 they have processed and collected data on 4,297 GAR influenced steers and heifers and these animals averaged \$188 per head premium and 42% graded US Prime (equivalent to an AusMeat marble score 5). The superior carcasses you see on these Sale bulls have the potential to produce similar results as we have recorded in our own branded beef trials. This years' Roma Sale bulls average in the top 10% for marbling (IMF) and Eye Muscle Area (EMA) and across all of the four Australian Angus \$ Indexes.

I also recently managed to get back to New Zealand and review some of exciting grazing and plant breeding work they are doing, they keep finding new ways to innovate and find productivity gains. I still feel NZ leads the way in pasture and grazing systems and the US are world leaders in genetics. Our job is to try and learn from the best globally including the top end of producers and researchers in Australia and apply that to our own farming and genetics programs across Australia.



Ed Lawson & Jason Erasmus in New Zealand

We still remain steadfast in our belief and breeding objectives that genetics will play a big role in making sure as beef farmers we keep up with finding productivity gains in all parts of the supply chain.

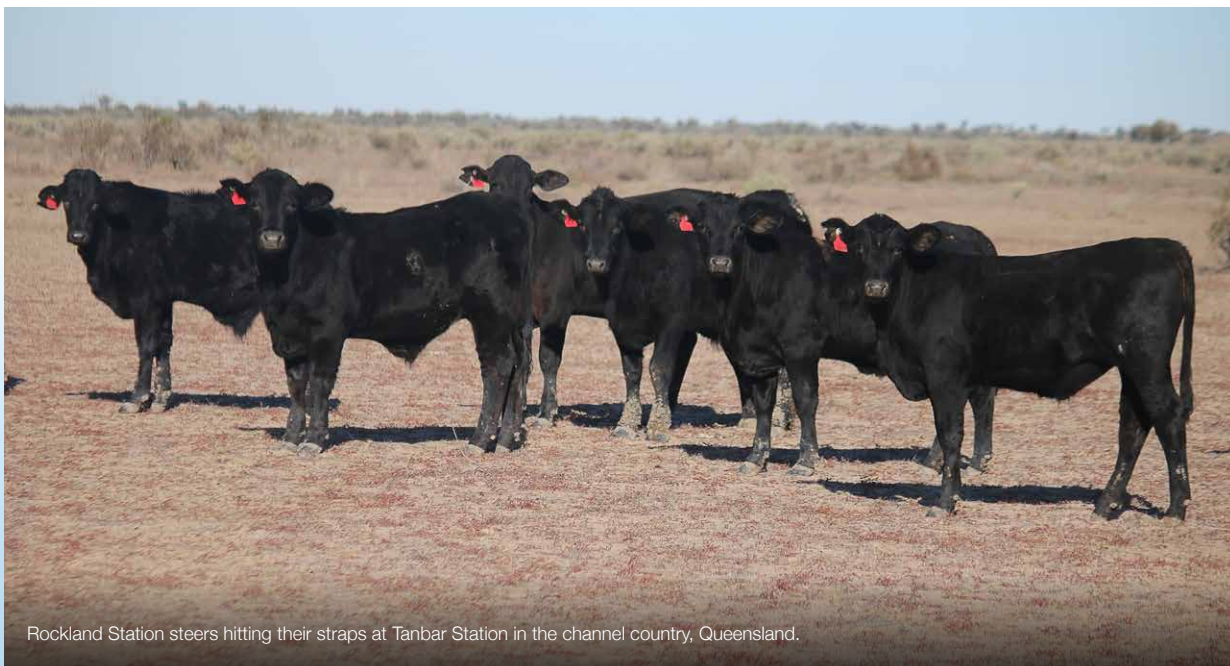
Calving ease is possibly the most important trait for any beef producer and even more so for northern breeding programs where supervision of calving is often limited or not a practical option. Dystocia is actually the number one trait for both economics and animal welfare and we do our best to provide our clients with the most accurate and up to date advice on calving ease suitability of our bulls. Anything that has a calving ease tick (red tock) we are extremely confident is suitable for heifers and in this catalogue there are 73/87 (84%) rock-solid calving ease bulls.

The Highest Heavy Grain Index (\$GN) bulls on offer in Queensland in 2022 and the only Angus stud testing for feed efficiency on-farm.

BULLS THAT SELL



CODE	SIRE	# PROGENY
ASH	GAR ASHLAND	16
GEN	GAR GENUINE	17
M518	LAWSONS MOMENTOUS M518	10
MM	GAR MOMENTUM	10
QT	GAR QUANTUM	15
IDX	VAR INDEX	7
MON	TE MANAIA MONTALTO M1314	8
RL	GAR RELIANT	2
J5	PARINGA JUDD J5	1
PROP	GAR PROPHET	1
TOTAL		87



Rockland Station steers hitting their straps at Tanbar Station in the channel country, Queensland.



Above: GAR Steers in feedlot

SALE BULLS ARE Sired BY Sires WE REGARD AS THE BEST-BALANCED PERFORMANCE Sires IN THE ANGUS BREED ON A GLOBAL BASIS.



GAR ASHLAND is this years' feature sire with 16 sons selling!

Ashland is an incredible calving ease, high growth sire, with moderate stature and loads of muscle. Ashland is the sire of the famous GAR Home Town who sold at the Gardiner Angus Ranch in 2020 for the record price of US\$475,000 and who is also being widely used in our program.



Above: Momentous (10 sons), GAR Quantum (15 sons) and Momentum (10 sons) combine well for the third sire-group mob. These three carcass giants take the Angus breed to another level!

LAWSON'S MOMENTOUS M518 is currently the #2 most widely used bull in the breed and compliments many of our other sire groups. Momentous bull calves have been breaking records across Australia, we have over 1,200 of his 3,744 registered calves so in our program giving you the power numbers to select from with superior genetics at an affordable price. It was pleasing to see his spread between 600D and Mature Cow Weight (MCW) widen with his MCW now +84 and well below breed average of +101. Apart from Momentous' unmatched multi-trait excellence his calves are wide-topped, thick set with exceptional docility and structure. We now have 4-year-old Momentous cows in the herd doing a superb job.



Above: Momentous is the only sire in the Angus breed >5 IMF, >13 EMA and >115 600D, he was the highest MSA Marble Score sire-group with his 10 steer progeny in Cohort 9 of the Angus Sire Benchmarking Program (ASBP) and our own carcass trials have seen many >7 marble score carcasses on the rail with only around 120 days on feed.

GAR Genuine (17 sons) who was one of the sires we selected on our last trip to the US and we have 320 progeny recorded by this exceptional calving ease and growth and a good outcross option for all our clients. With a >10 Direct calving Ease (top 2% of the breed) and +134 600D Growth (top 16%) puts Genuine in a rare territory and is a great outcross for clients.

VAR Index 3282 (7 sons) provides some extra muscle at +14.9 EMA, top 1% of the breed and progeny are quiet, exceptionally sound and excellent growth and calving ease.

This Sale also features a sire group from Te Mania Montalto M1314 (8 sons) who is owned by King Isle Farms. Montalto is one of those bulls that slips under the radar, he's a problem free, no holes bull with exceptional calving ease (+9.7 DIR) sire, very sound quiet disposition, moderate growth and maturity pattern with excellent carcass traits. Montalto's sire has been used widely across Australia, Montalto is more moderate for Mature Cow Weight (MCW) than his sire and has nearly 400 calves registered now so is high accuracy and recommended as a good outcross.

ALL 87 SALE BULLS RANK AT THE TOP END OF THE ANGUS BREED ON MANY LEVELS INCLUDING:

- 73/87 (84%) of bulls have a calving ease tick ✓ meaning they are ideal to mate with heifers and 103/157 (66%) are above breed average (2.2) for Calving Ease Direct (DIR)
- Top 42% for Calving Ease Direct (DIR) and lowest 30% for Birth Weight (BW)
- Top 7% of the breed for Heavy Grain Fed Index (\$GRN) and top 10% for Angus Breeding Index (\$D), Angus Breeding Index (\$A) and Heavy Grass Index (\$GRS)

\$GN	\$A	\$D	\$GS
331	242	197	229
7%	10%	10%	10%

- Top 45% for 600D Growth
- Below Breed average for Mature Cow Weight (MCW) with +95 vs breed average of +101
- Top 10% for marbling (intramuscular fat) and Eye Muscle Area (EMA)

You often hear us talk about multi-trait excellence. These boys really are in a league of their own in terms of multi-trait excellence, high performance calving ease bulls in a sensible maturity pattern. Equally important is their consistency (lower standard deviation in all bell curves) across all economic traits and their ability to achieve much higher MSA Indexes, more consistently off grass and in the feedlot at a younger age.



Above: Charlotte Lawson at Tanbar Station, Queensland

WE ARE PROUD OF THE ‘TYPE’ OF CATTLE WE BREED

We don’t shirk from the fact we like to breed easy calving, tough performance cattle that produce some of the world’s highest quality beef.

People often talk about Angus ‘type’ and when I look at these bulls I am very proud of the ‘type’ of cattle we breed, both from a genetic (DNA is the important part they pass on!) and from a visual, soundness and handling perspective. We make no apologies for running cattle in large mobs and under high stocking pressure and our cattle not being ‘pretty’ at times as we believe this selection pressure is the only way we can identify the true performance of cattle. While some hold the view that we all can access the same AI sires and comparing EBVs across herds tells the whole story it is actually the disciplined, rigorous and often tough selection decisions we make that is possibly more important than the just comparing EBVs.

ESTABLISHING OBJECTIVE BREEDING GOALS AND GETTING YOUR EYE ON THESE EBVS AND NEW \$ INDEXES SHOULD BE PIVOTAL TO ANY SELECTION CRITERIA ALONG WITH VISUAL ASSESSMENT FOR TRAITS LIKE STRUCTURE, CONFORMATION AND TEMPERAMENT.

EBVs can often be seen as abstract numbers to some, but they are the best and only meaningful guide as to what the underlying genetic potential of these bulls are which is what will drive your genetic progress. The important thing is to understand what this means in your herd, to understand where you are and where you want to be for key traits like calving ease, growth and mature cow size.

We have always said growth is important and kilograms of beef per hectare drives commercial profitability (amongst other things), but it needs to be in the right package and balanced with cow size and ability for the cow herd to withstand the tough years. Based on bull sales from the past two years, we are the only major Angus stud in Australia that are now below average on Mature Cow Weight (MCW).

Cow size is the biggest influencer on feed costs, stocking rate and the what we refer to the “bounce-back” factor in terms a cows ability to rebreed quickly and calve at a similar time each year.

We look forward to visiting more of you in the next couple of years and hopefully seeing you on Sale Day at Roma on Friday 29th July.

Regards,

Harry Lawson

SELECTION FOR FEED EFFICIENCY

OUR VICTORIAN FARM AND HEADQUARTERS INCLUDES OUR VYTELLE (FORMERLY GROWSAFE) FEED EFFICIENCY TESTING AND RESEARCH STATION.

We have now been testing bulls for over two years and have established a very good baseline data set and have the ability to rank all current sires for a range of feed efficiency traits, including Net Feed Intake (NFI).

This data is included in Vytelle's global genetic evaluation analysis so we can see where our bulls fit in the global population. We have also used linked sire to the Angus Sire Benchmark Program (ASBP).

We will continue to test cohorts and utilise this information in our breeding decisions. Long term we believe we can improve net feed efficiency (NFI) by 20%, which will be important for our cost of production but also to reduce our greenhouse gas (GHG) emissions as part of our longer term business and genetics plan.

We are the only Angus stud in Australia that have their own on-farm testing station and have made a good start at shifting the bell curve in feed efficiency. Measuring and evaluating the economic impact of genetic change when we put selection pressure on feed efficiency is an important competitive advantage for Lawson Angus now and in the future.



Above: Bulls feeding through the Vytelle system at Claremont

We are measuring significant variation and differences between sires and individual bulls and we recognise there is lots of room for genetic improvement in this independent trait. Please call us to discuss further if you are interested in finding out how we are incorporating feed efficiency into our long term breeding program.

**“IF YOU DON’T MEASURE IT,
YOU CAN’T MANAGE IT.”**





This feed efficiency technology was a significant investment for us and part of a long term strategy to put selection pressure on feed efficiency.

FOR US THIS IS THE MISSING LINK IN IDENTIFYING CATTLE THAT USE FEED (ENERGY) SMARTER.

We know our cattle are at the top of the breed for feed:gain (feed conversion efficiency) and the next step is to identify cattle that meet our tough multi-trait criteria but are also good at Net Feed Intake (NFI). Our GrowSafe system allows us to weigh animals on a daily basis as they drink, so we not only record daily feed intakes we also get weight performance in real time. This is the feedback that has been lacking in beef systems and sets our genetics apart.

We have been able to rank sires and see where they fit in the global Angus population and we are using this information in our mating decisions going forward. The good news for beef farmers is selection for feed efficiency aligns with on-farm productivity and also will help select for animals with a lower carbon footprint (lower emissions intensity).

In terms of genetics we see the ability to accurately measure what individual animals eat and their feed conversion rate as an opportunity to fine tune and rank sires for these important traits – Residual Feed Intake (RFI or NFI), Dry Matter Intake (DMI) and Feed Conversion (FC). We know our genetics (and those sourced from GAR) are amongst the most efficient in the Angus breed. Having this information allows us to make informed decisions about our breeding herd so you can improve the genetic progress and performance of your herd. We will use this data sensibly over time to ensure animals are accountable for what they eat, which is one of the most important factors in beef herds cost of production and profitability.



IGNORE THE NOISE – STAY FOCUSED ON YOUR KEY OBJECTIVES

AS I DISCUSSED WITH MARK GARDINER, GARDINER ANGUS RANCH, KANSAS, EARLIER LAST YEAR OUR PROGRAM (SAME APPLIES FOR GAR) IS BORING IN THE CONTEXT THAT IT IS HIGHLY PREDICTABLE, TRANSPARENT AND SIMPLY INVOLVES IDENTIFYING AND MULTIPLYING THE BEST BULLS WE CAN FIND IN LARGE NUMBERS.

Mark chuckled away as we agreed we are two of the most boring animal breeders on earth! Being disciplined and ruthless in our selection and culling criteria is how we, and in turn you, make consistent, predictable genetic progress, not by chasing one outcross after another. It may be boring to some, but it takes a lot of research behind the scenes, a strong global network and then a lot of hard work to implement. I often think how easy it would be to let the bulls out for a run after two big rounds of FTAI.

One of the big reasons why we don't have the big genetic spread (variation) across all traits is that we have not used follow-up natural mating bulls since 1994. We carefully consider every individual mating, taking into account not only objective data (EBVs, pedigree and inbreeding coefficients) we also use all our knowledge and observations that we make when working cows at calving and AI and on our daily rounds shifting breaks for bulls.

**WE DO OUR PLANNED MATINGS
AROUND WHAT WE THINK IS BEST
FOR OUR COMMERCIAL CLIENTS.**

I hear all the time from other studs “we value phenotype”, (an animals visual eye appeal) is heavily linked and correlated with high levels of feed and/or low stocking rates so the true underlying genetic potential is often masked, especially for important traits like fertility and ability to rebreed and bounce-back after tough years.

If you recall this time last year Angus Australia released a new version of Indexes that amongst other things put greater emphasis on Mature Cow Weight (MCW) in terms of changing the economic weightings to reflect that MCW is directly related to feed costs and 70% of the costs in a cow-calf operation relate to the production of feed and supplementary feeding. This caused some major re-ranking of sires (in a good way to my way of thinking and economic analysis).

However it caused such a backlash on Angus Australia they were forced to withdraw the new Indexes and have only just released the latest assortment of Indexes in December 2022 (they were released earlier as trial Indexes). Angus Australia have released a low feed cost version of all the major indexes.



Above: Mark and Henry Gardiner, Gardiner Angus Ranch.

See below this extract from Andrew Byrnes in press release dated 26 November 2021 **“Introducing New Angus Selection Indexes”** (full version available on ASA web site).

“Low feed cost versions of each selection index have been introduced to cater for Angus breeders who are running a production systems where pasture is not fully utilised for the majority of the year, or where the cost of supplying additional feed, via either supplementary feeding and/or increased pasture production, is low.

In these production systems, if there is an increase in the maintenance requirements of the breeding herd due to an increase in mature weight, minimal additional costs are incurred.

The low feed cost selection indexes do not consequently aim to limit an increase in mature cow weight, while improvement in other production traits is achieved, which is an objective in the other versions of these selection indexes.”

This shows that there is a strong "movement" within Australian Angus breeders to focus on growth without consideration for mature cow size. It truly shows the disconnect between the seedstock Industry and the commercial Industry. All I will say to this is we will stay focused and try to work with seedstock herds that do understand that feed costs and having a productive, efficient cow herd is the backbone of any beef enterprise and that meat quality (marbling) and yield is important in and let the market decide which direction the Angus breed goes in.

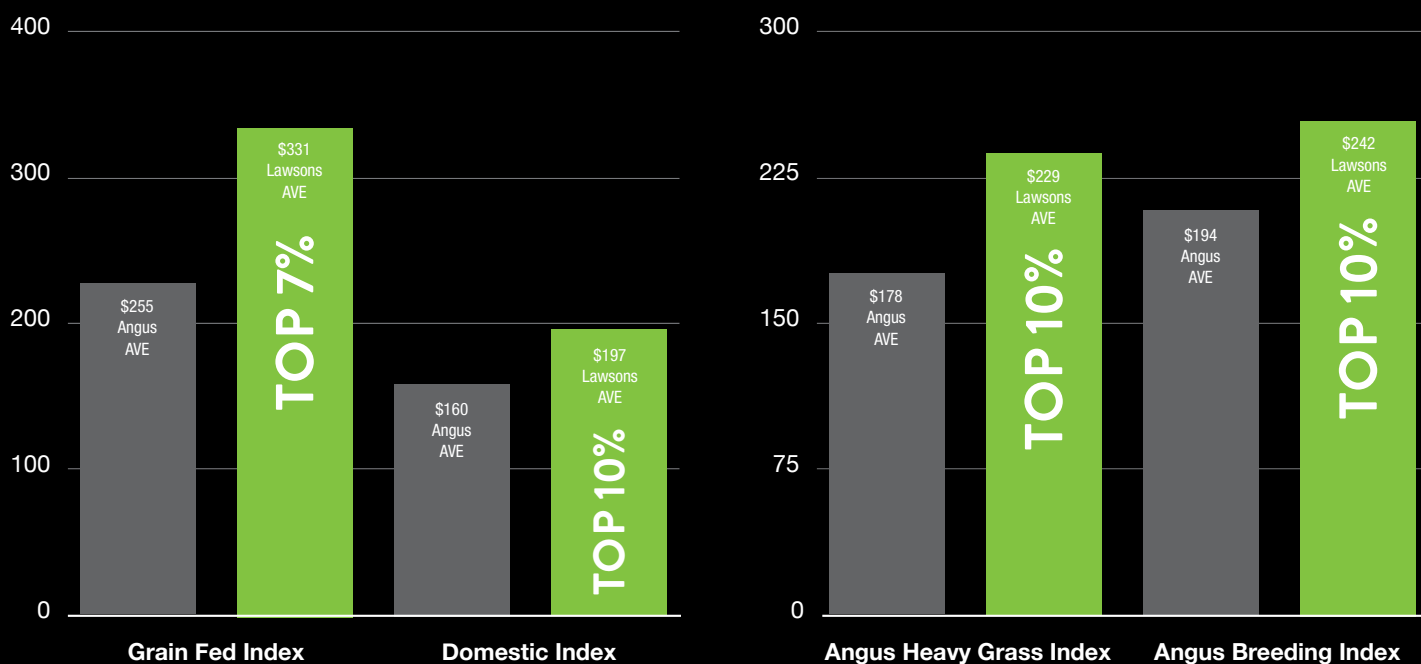
– Harry Lawson





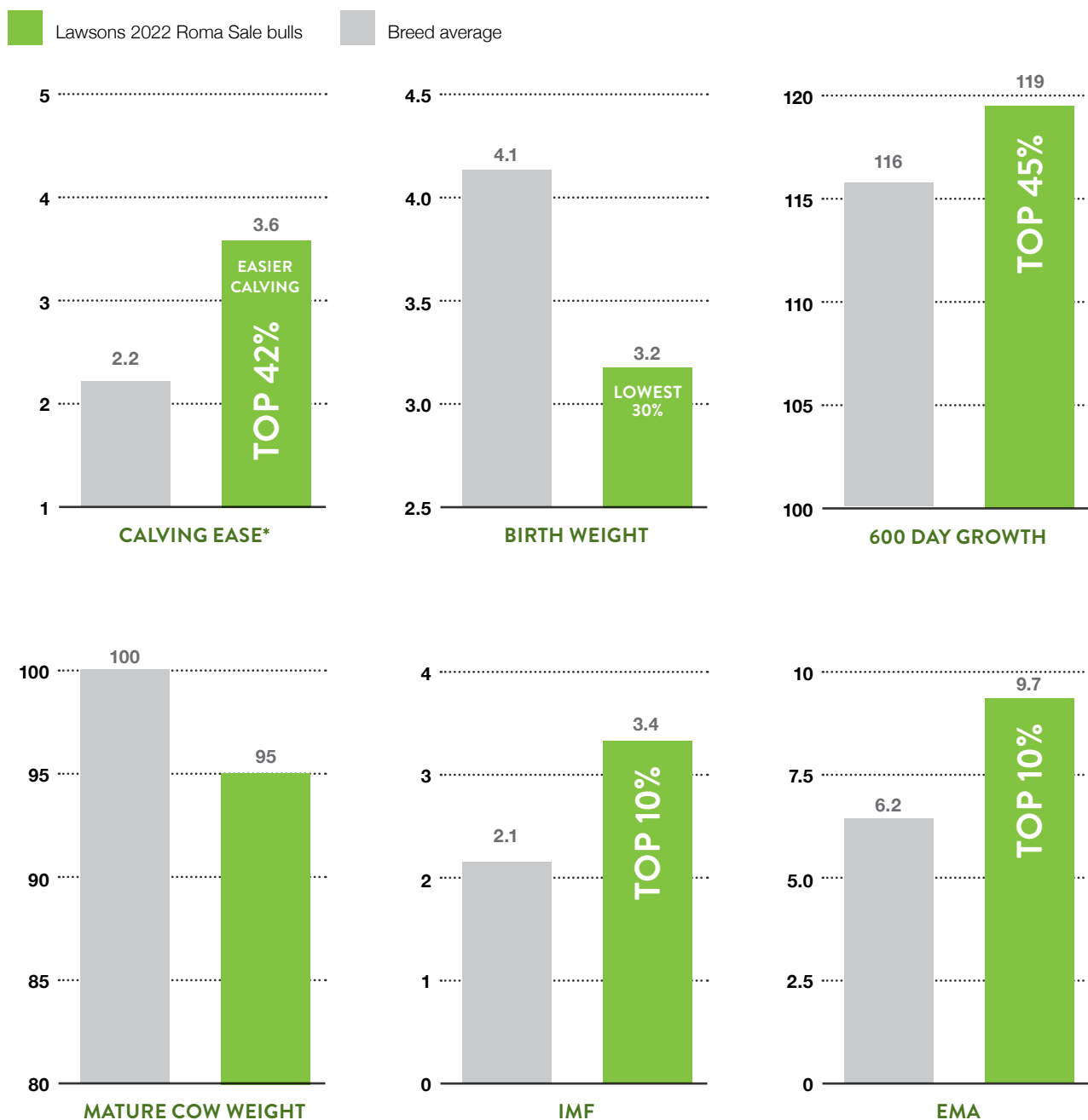
HOW DO **LAWSON'S ANGUS ROMA BULLS** COMPARE TO THE ANGUS BREED AVERAGE?

THESE ROMA SALE BULLS EXCEL ACROSS ALL KEY ECONOMIC TRAITS. THEY ARE UNIQUE IN THEIR BALANCE OF CALVING EASE, HIGH GROWTH, MODERATE COW SIZE AND UNMATCHED MUSCLE AND HIGH MARBLING POTENTIAL.



■ Lawson's 2022 Sale bulls
 ■ Breed average

HOW DO LAWSONS ANGUS ROMA SALE BULLS COMPARE TO THE ANGUS BREED AVERAGE?



REFERENCE SIREs

Breedplan EBVs sourced from Angus Australia, June 2022

1	GAR ASHLAND										SIRE GAR EARLY BIRD				MGS B/R AMBUSH 28			\$INDEX VALUE									
Birth Date:	31/1/15			ASA ID:	USA18217198			ASA Status:	HBR		AM Status:	AMF		NH Status:	NHF		CA Status:	CAF		DD Status:	DDF						
	Calving Ease			Growth and Maternal						Fertility				Carcase													
	DIR	DTRS	GL	BWT	200	400	600	MCW	MILK	SS	DC	CWT	RIB	RUMP	EMA	RBY	IMF					\$G	\$D	\$A	\$GS		
EBVs	0.4	6.9	-6.5	3.5	69	119	153	117	19	1.4	-1.1	82	-2.3	-2.8	13.1	2.7	3.0					404	241	296	283		
Acc	89	65	99	99	98	98	98	92	88	98	51	88	90	86	90	85	88										

2	GAR GENUINE										SIRE K C F BENNETT ABSOLUTE				MGS MCC DAYBREAK			\$INDEX VALUE									
Birth Date:	15/3/16			ASA ID:	USA18766553			ASA Status:	HBR		AM Status:	AMF		NH Status:	NHF		CA Status:	CAF		DD Status:	DDF						
	Calving Ease			Growth and Maternal						Fertility				Carcase													
	DIR	DTRS	GL	BWT	200	400	600	MCW	MILK	SS	DC	CWT	RIB	RUMP	EMA	RBY	IMF					\$G	\$D	\$A	\$GS		
EBVs	10.3	5.6	-11.9	0.4	57	104	134	115	18	2.2	-4.4	75	0.2	-2.6	7.9	2.1	2.3					343	215	259	246		
Acc	72	57	98	97	95	95	93	85	80	89	51	84	85	81	84	81	83										

3	LAWSONs MOMENTOUS M518										SIRE GAR MOMENTUM				MGS TE MANIA AFRICA A217			\$INDEX VALUE									
Birth Date:	30/6/16			ASA ID:	VLYM518			ASA Status:	HBR		AM Status:	AMFU		NH Status:	NHFU		CA Status:	CAFU		DD Status:	DDF						
	Calving Ease			Growth and Maternal						Fertility				Carcase													
	DIR	DTRS	GL	BWT	200	400	600	MCW	MILK	SS	DC	CWT	RIB	RUMP	EMA	RBY	IMF					\$G	\$D	\$A	\$GS		
EBVs	-2.5	-8.7	-5.6	4.0	51	96	115	83	28	2.6	-2.7	62	-1.0	-0.6	13.0	0.2	5.0					343	177	229	218		
Acc	94	79	99	99	98	98	98	97	94	98	63	92	91	89	90	85	89										

4	GAR MOMENTUM										SIRE GAR PROGRESS				MGS ALC BIG EYE D09N			\$INDEX VALUE									
Birth Date:	31/8/12			ASA ID:	USA17354145			ASA Status:	HBR		AM Status:	AMF		NH Status:	NHF		CA Status:	CAF		DD Status:	DDF						
	Calving Ease			Growth and Maternal						Fertility				Carcase													
	DIR	DTRS	GL	BWT	200	400	600	MCW	MILK	SS	DC	CWT	RIB	RUMP	EMA	RBY	IMF					\$G	\$D	\$A	\$GS		
EBVs	1.0	-0.6	-3.0	2.6	47	86	101	70	21	0.0	1.8	61	-0.8	-1.4	12.4	0.2	5.3					341	167	221	208		
Acc	94	83	99	99	98	98	98	98	97	98	74	95	95	94	94	93	93										

5	GAR QUANTUM										SIRE GAR MOMENTUM				MGS CONNEALY IN SURE 8524			\$INDEX VALUE									
Birth Date:	18/8/16			ASA ID:	USA18636059			ASA Status:	HBR		AM Status:	AMF		NH Status:	NHF		CA Status:	CAF		DD Status:	DDF						
	Calving Ease			Growth and Maternal						Fertility				Carcase													
	DIR	DTRS	GL	BWT	200	400	600	MCW	MILK	SS	DC	CWT	RIB	RUMP	EMA	RBY	IMF					\$G	\$D	\$A	\$GS		
EBVs	1.8	-0.4	-3.6	4.6	61	108	131	102	24	3.3	-2.7	84	-1.4	-1.9	14.0	2.3	3.4					362	221	264	250		
Acc	72	60	97	96	93	93	92	86	81	89	53	85	85	81	83	81	83										

6	VAR INDEX										SIRE GAR INGENUITY				MGS CONNEALY ONWARD			\$INDEX VALUE									
Birth Date:	1/4/13			ASA ID:	USA17513381			ASA Status:	HBR		AM Status:	AMF		NH Status:	NHF		CA Status:	CAF		DD Status:	DDF						
	Calving Ease			Growth and Maternal						Fertility				Carcase													
	DIR	DTRS	GL	BWT	200	400	600	MCW	MILK	SS	DC	CWT	RIB	RUMP	EMA	RBY	IMF					\$G	\$D	\$A	\$GS		
EBVs	5.0	3.8	-4.8	4.0	55	99	122	99	20	0.2	-3.0	70	-0.2	-1.2	14.8	2.6	1.9					321	215	248	231		
Acc	86	74	98	98	97	97	97	96	94	96	63	91	90	89	90	86	89										

7	TE MANIA MONTALTO M1314										SIRE TE MANIA BERKLEY B1				MGS TE MANIA BANJO B170			\$INDEX VALUE									
Birth Date:	5/9/16			ASA ID:	VTMM1314			ASA Status:	HBR		AM Status:	AMFU		NH Status:	NHFU		CA Status:	CAFU		DD Status:	DDFU						
	Calving Ease			Growth and Maternal						Fertility				Carcase													
	DIR	DTRS	GL	BWT	200	400	600	MCW	MILK	SS	DC	CWT	RIB	RUMP	EMA	RBY	IMF					\$G	\$D	\$A	\$GS		
EBVs	9.6	7.7	-3.8	2.8	48	94	115	91	22	5.5	-8.2	60	-0.6	-0.5	9.0	0.7	3.4					309	204	237	227		
Acc	79	68	98	97	95	96	95	92	84	95	62	82	85	83	84	81	83										

8	GAR RELIANT										SIRE GAR SURE FIRE				MGS B/R DESTINATION 727-928			\$INDEX VALUE									
Birth Date:	19/8/16			ASA ID:	USA18669357			ASA Status:	HBR		AM Status:	AMF		NH Status:	NHF		CA Status:	CAF		DD Status:	DDF						
	Calving Ease			Growth and Maternal						Fertility				Carcase													
	DIR	DTRS	GL	BWT	200	400	600	MCW	MILK	SS	DC	CWT	RIB	RUMP	EMA	RBY	IMF					\$G	\$D	\$A	\$GS		
EBVs	0.1	-0.8	-3.5	4.7	62	111	131	107	23	2.2	-3.4	84	-2.4	-3.0	7.6	2.3	3.5					365	224	262	245		
Acc	76	61	98	97	94	92	91	85	79	90	56	84	85	81	83	81	82										

9		PARINGA JUDD J5										SIRE TUWHARETOA REGENT D145				MGS TE MANIA BERKLEY B1				\$INDEX VALUE			
Birth Date:		14/2/13			ASA ID: HKFJ5			ASA Status: HBR			AM Status: AMF		NH Status: NHF		CA Status: CAF		DD Status: DDF						
		Calving Ease			Growth and Maternal				Fertility				Carcase										
		DIR	DTRS	GL	BWT	200	400	600	MCW	MILK	SS	DC	CWT	RIB	RUMP	EMA	RBY	IMF	\$G	\$D	\$A	\$GS	
EBVs		10.0	0.1	-4.8	2.3	50	94	126	101	25	2.3	-6.6	85	1.1	1.3	9.7	0.4	3.2					
Acc		94	84	99	99	98	98	98	97	97	98	75	94	94	94	93	92	92	330	195	248	238	

10		GAR PROPHET										SIRE C R A BEXTOR 872 5205 608				MGS S S OBJECTIVE T510 OT26				\$INDEX VALUE			
Birth Date:		15/5/08			ASA ID: USA16295688			ASA Status: HBR			AM Status: AMF		NH Status: NHF		CA Status: CAF		DD Status: DDF						
		Calving Ease			Growth and Maternal				Fertility				Carcase										
		DIR	DTRS	GL	BWT	200	400	600	MCW	MILK	SS	DC	CWT	RIB	RUMP	EMA	RBY	IMF	\$G	\$D	\$A	\$GS	
EBVs		3.9	5.0	-1.1	3.6	67	108	133	80	26	0.7	-10.1	70	0.8	-0.2	6.4	-0.8	4.6					
Acc		97	91	99	99	99	99	99	98	98	99	88	97	97	97	97	96	96	478	268	338	321	

ROMA 2022 SALE BULL AVERAGE																					
DIR	DTRS	GL	BWT	200	400	600	MCW	MILK	SS	DC	CWT	RIB	RUMP	EMA	RBY	IMF	\$GN	\$A	\$D	\$GS	
2.2	2.5	-4.7	4.1	50	89	116	100	17	2.1	-4.6	66	0.0	-0.4	6.2	0.5	2.1	255	194	160	178	

BULLS THAT SELL

CODE	SIRE	# PROGENY
ASH	GAR ASHLAND	16
GEN	GAR GENUINE	17
M518	LAWSONS MOMENTOUS M518	10
MM	GAR MOMENTUM	10
QT	GAR QUANTUM	15
IDX	VAR INDEX	7
MON	TE MANAIA MONTALTO M1314	8
RL	GAR RELIANT	2
J5	PARINGA JUDD J5	1
PROP	GAR PROPHET	1
TOTAL		87

REFERENCE SIRES



GAR ASHLAND

GAR Ashland is a good outcross for most and one of the high use sires across the US and Australia. Visually attractive and unmatched in his combination of calving ease, growth, marbling and muscle. No other sire we have used have this much muscle in such a stout, moderate frame.



GAR GENUINE

GAR Genuine is another new outcross sire we selected on our last trip to the US in 2019 where he is one of the elite Select Sires bulls and marketed through genetics Australia. Big time spread with +10.8 CED and +133 for 600D. Genuine combines two highly proven superior feed efficiency sires KCF Bennet Absolute and MCC Daybreak. We will have feed efficiency data on our first Genuine calves this spring. Progeny are long bodied attractive and suit mating with all our major sire-groups.



LAWSONS MOMENTOUS M518

Momentous is an exceptional son of Momentum, outstanding individual that excels in every part of the supply chain. Momentous has been widely used by Lawsons Angus and a popular sire at Genetics Australia. Super sound and exceptional temperament and out of one of our elite donor dams.



GAR MOMENTUM

Momentum is now regarded as one of the breeds elite calving ease, high carcass merit sires, progeny are stout, moderate frames with exceptionally high EMA and marbling. Sires moderate fertile, easy calving daughters that set the bar for cow efficiency and elite carcass genetics.



GAR QUANTUM

A new GAR sire we purchased semen exclusively from in 2019 and one of the most exciting sire prospects from Gardiner Angus Ranch. A son of Momentum, with similar EMA (top 1%) to Momentous and Momentum and top 10% for marbling (IMF). Quantum has more growth than both Momentum and Momentous and progeny excel across the board with excellent docility.



VAR INDEX

Powerful son of GAR Ingenuity, great curve bending attributes with moderate Mature Cow Weight (MCW) and massive EMA. Progeny are long bodied with loads of muscle.



TE MANIA MONTALTO M1314

Photo: Montalto son Lot 30 Lawsons Montalto R141

Montalto is a high Indexing well balanced, moderate Berkley son owned by King Isle Farms with excellent calving ease, growth curve and carcass.



GAR RELIANT

Reliant blows you away with his impressive phenotype, powerful design and gentle disposition. Stacked with maternal strength and feed efficiency with Sure Fire, B/R Destination 727-928 and goes back to one of our all time favourites and big time "influencers" GAR Predestined. Adds lots of power and moderate maturity pattern for that much growth.



PARINGA JUDD J5

Judd was purchased by Lawsons Angus and Shaanxi Kingbull (China) as a yearling. Judd has proven himself in our tough contemporaries to match it with the big boys. Progeny are deep bodied, super attractive, slick coated and have exceptionally sound structure. Judd daughters are more moderate than both Berkley and Regent and are showing they can handle the pressure of our system with high stocking rates and large contemporary groups.



GAR PROPHET

Prophet sets the frontier in modern beef production with phenomenal growth curve, moderate cow size and easy calving. This combined with Prophet's elite carcass genetics and excellent disposition and structure provides the next step for progressive breeders.

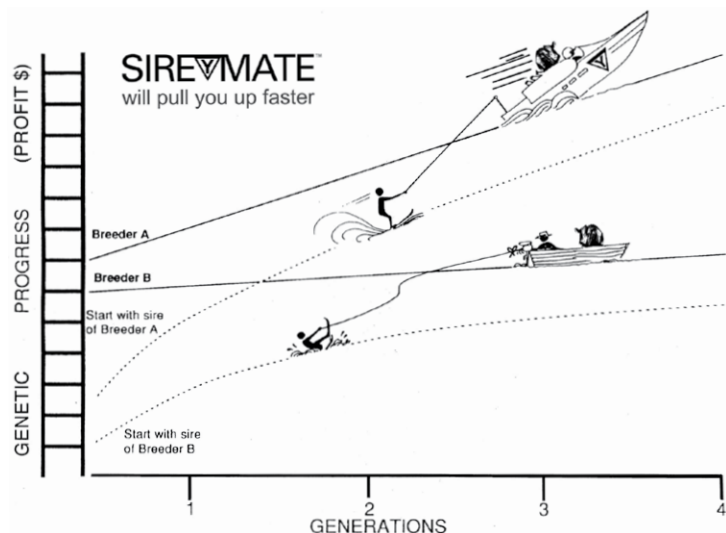
SIREMATE™ OPTIONS IN PRACTICE

SIRE GROUP A New Design Line	SIRE GROUP B Precision Line	SIRE GROUP C Focus Line	SIRE GROUP D Ambassador Line	SIRE GROUP E Objective Line
GAR Ingenuity B/R New Design 036 Ythanbrae Henry VIII Bon View New Design 1407 GAR Prime Design Ythanbrae New Design 036 U84 Ythanbrae True Blue N33 VDAR New Trend 315 Bon View New Design 208 Perry Power Design 715 GAR Integrity GAR Casper GAR Authority GAR Predestined Lawsons GAR Fairdinkum Z197 Rito 2V1 of 2536 1407 TC Total 410 Lawsons Dinky-Di Z191 GAR New Design 5050 Lawsons King Island Beef Z1292 Lawsons Romeo A754 Thomas Grade Up Rito 4L6 of 2536 208 Lawsons Novak E313 Rennylea C511 GAR Progress GAR Momentum GAR Method Momentous M518 Lawsons Miraculous Q44	GAR Precision 1680 GAR Paramount 8908 GAR Pinnacle 7708 GAR Everest 9409 CA Future Direction GAR Yield Grade Ythanbrae GAR Precision U28 'Calculator' Ythanbrae GAR Precision V527 Lawsons Buckshot X410 Lawsons Tank X1235 Ardrossan Direction X3 GAR US Premium Beef GAR Retail Product Lawsons High Grade Z440 Androssan Admiral A2 GAR Right Direction Lawsons Swagman A179 Lawsons Tank B1155 Lawsons Ironstone B1370 Alloura Get Cracking G10	GAR Sure Fire Lawsons NZ09104 GAR Pheonix	Tuwharetoa Regent D145 Topbos Ambassador F4 Storth Oaks D21 Paringa Judd J5	SS Objective T510 0T26 GAR Selective GAR Ultimate GAR Efficiency Rito Revolution SS Traveler 6807 T510 GAR Solution Lawsons Invincible C402 HPCA Intensity 7102 GAR Index
Column A daughters sire group can me mated to all other sire groups	Column B daughters sire group can me mated to all other sire groups	Column C daughters sire group can me mated to all other sire groups	Column D daughters sire group can me mated to all other sire groups	Column E daughters sire group can me mated to all other sire groups

DEVELOP YOUR OWN SIMPLE 10 YEAR PLAN

Using Lawsons Angus genetics will provide a highly predictable path to keeping you a decade ahead of the average Angus breeder.

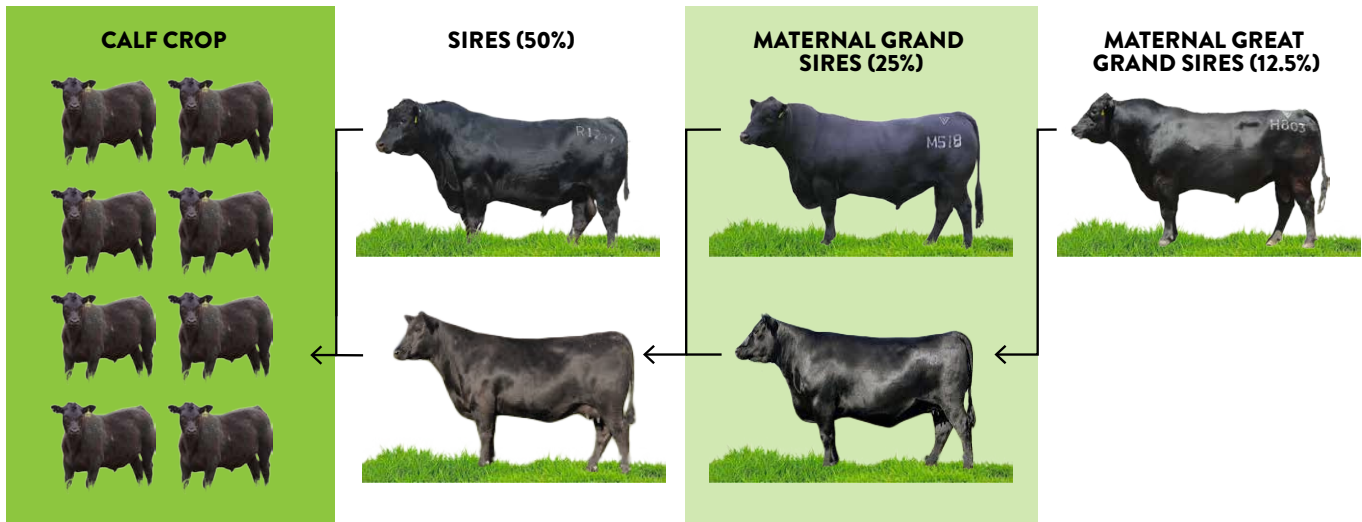
Lawsons Angus breeding program is built on multiplying the best bulls available in the world. Sire-Mate helps breeders develop a simple, but still flexible mating plan that minimises inbreeding and maximises genetic gain.





SIRE GROUP F Bartel Line	SIRE GROUP G Prophet Line	SIRE GROUP H Ashland Line	SIRE GROUP I Other Sires
Ayrvale Bartel E7 Ayrvale Bartel E8 Dunoon Evident E614 Lawsons Incredible H803 Lawsons Hugo H653 Lawsons Harvard H205	GAR Prophet GAR Prophecy GAR Relevance	GAR Ashland GAR Home Town	RockN D Ambush 1531 B/R Ambush 28 Lawsons Payload X951 GAR Grid Maker GAR Payload 3674 GAR Evas Convergence 3403 GAR Evas Consistence 3803 GT Sentry Bon View Spectrum 1176 N Bar Prime Time D806 BT Ultravox 297E BCC Bushwacker 41-93 Connealy Lead On Gardens High Mark Tehama Schwarzenegger N600 Ironwood New Level Ythanbrae Pono V346 Wilson Downs Equator V191 Te Mania Africa Lawsons Harry H234 Rennylea Edmund E11 Sydgen Trust 6228 Leachman Resolution GAR-EGL Protege B/R New Day 454 Broken Bow 002 GAR Anticipation GAR Sunrise
Column F daughters sire group can me mated to all other sire groups	Column G daughters sire group can me mated to all other sire groups	Column H daughters sire group can me mated to all other sire groups	Column I daughters sire group can me mated to all other sire groups

! 87% OF GENETIC COMPOSITION OF CALF CROP IS DETERMINED BY THE SIREs USED OVER THE LAST 3 GENERATIONS.



2022 ROMA SALE BULLS

GROUP BREEDPLAN EBVs

Lot #	Tag No	SIRE	DAM	MGS	Birth Date	Mob	ASA Status	AM Status	NH Status	CA Status	DD Status	Comments
1	R0110	MON	K1048	E7	19/6/20	RQLD 1	APR	AMFU	NHFU	CAFU	DD6%	
2	R6184	ASH	L1842	H0234	24/8/20	RQLD 1	HBR	AMFU	NHFU	CAFU	DDC	
3	R0160	MM	P1429	L0483	15/8/20	RQLD 1	HBR	AMFU	NHFU	CAFU	DDFU	
4	R6193	IDX	K6423	REG	31/8/20	RQLD 1	HBR	AMFU	NHFU	CAFU	DDFU	
5	R6195	IDX	L1849	H0803	17/9/20	RQLD 1	HBR	AMF	NHFU	CAFU	DDFU	
6	R6225	IDX	M6278	PROP	16/9/20	RQLD 1	HBR	AMFU	NH1%	CAFU	DDFU	
7	R1209	ASH	M0076	J5	9/7/20	RQLD 1	HBR	AMFU	NHFU	CAFU	DD3%	
8	R0236	MON	P1280	RAD	13/7/20	RQLD 1	HBR	AMFU	NHFU	CAFU	DDF	
9	R0146	GEN	P1459	L0483	18/8/20	RQLD 1	HBR	AMFU	NHFU	CAFU	DD3%	
10	R6180	ASH	L6324	PROP	8/9/20	RQLD 1	HBR	AMFU	NHFU	CAFU	DD2%	
11	R6215	QT	M6389	REG	17/8/20	RQLD 1	HBR	AMFU	NHFU	CAFU	DD1%	
12	R6222	IDX	M6185	J6020	16/9/20	RQLD 1	APR	AMFU	NHFU	CAFU	DDFU	
13	R0119	M0518	P1145	PCY	4/8/20	RQLD 1	HBR	AMFU	NHFU	CAFU	DD2%	
14	R0151	MM	P1626	KOD	29/8/20	RQLD 1	HBR	AMFU	NHFU	CAFU	DDF	
15	R0126	GEN	H0283	E7	13/8/20	RQLD 1	HBR	AMF	NHFU	CAFU	DDFU	
16	R0153	GEN	P1621	MM	29/8/20	RQLD 1	HBR	AMFU	NHF	CAF	DDFU	
17	R6209	M0518	M6245	PROP	28/8/20	RQLD 1	APR	AMFU	NHFU	CAFU	DD7%	
18	R6221	IDX	L6316	SF	1/9/20	RQLD 1	HBR	AMFU	NHFU	CAFU	DDFU	
19	R6201	M0518	K0349	GT	30/8/20	RQLD 1	HBR	AMFU	NHFU	CAFU	DDFU	
20	R6191	MM	K6121	ANT	6/9/20	RQLD 1	HBR	AMFU	NHFU	CAFU	DDF	
21	R0262	MON	P0861	MM	26/7/20	RQLD 1	HBR	AMFU	NHFU	CAFU	DDF	
22	R6226	ASH	M6500	PROP	19/8/20	RQLD 1	HBR	AMC	NH8%	CAFU	DDF	
23	R6175	PROP	K6457	REG	24/9/20	RQLD 1	HBR	AMFU	NHFU	CAFU	DDFU	
24	R0259	M0518	P0300	PROP	2/8/20	RQLD 1	HBR	AMFU	NHFU	CAFU	DDFU	
25	R6206	IDX	M6145	J6041	21/8/20	RQLD 1	HBR	AMFU	NHFU	CAFU	DDFU	
26	R0148	MM	P1446	KOD	19/8/20	RQLD 1	APR	AMFU	NHFU	CAFU	DDFU	
27	R0152	MM	P1437	KOD	9/9/20	RQLD 1	HBR	AMFU	NHFU	CAFU	DD1%	
28	R0311	ASH	P0779	PROP	23/5/20	RQLD 2	HBR	AMF	NHFU	CAFU	DDFU	
29	R6068	RL	P6369	KOD	9/8/20	RQLD 2	HBR	AMC	NH4%	CAFU	DDF	
30	R0141	MON	P1584	M0518	23/8/20	RQLD 2	HBR	AMFU	NHFU	CAFU	DDFU	
31	R5065	ASH	P1623	KOD	11/8/20	RQLD 2	HBR	AMFU	NHFU	CAFU	DD7%	
32	R6105	ASH	H0828	E7	18/8/20	RQLD 2	APR	AMFU	NHFU	CAFU	DDFU	
33	R0104	M0518	K0529	GT	19/6/20	RQLD 1	HBR	AMFU	NHFU	CAFU	DD5%	
34	R0210	MON	P0341	MM	18/7/20	RQLD 2	HBR	AMFU	NHFU	CAFU	DDFU	
35	R0154	MM	P1540	J5	20/8/20	RQLD 2	APR	AMFU	NHFU	CAFU	DD5%	
36	R0245	ASH	P1250	KOD	13/7/20	RQLD 2	HBR	AM3%	NHFU	CAFU	DDFU	
37	R0267	GEN	P1431	J5	5/8/20	RQLD 2	HBR	AMFU	NHFU	CAFU	DD26%	
38	R0166	MM	P1447	E7	18/8/20	RQLD 2	HBR	AMFU	NHFU	CAFU	DD1%	
39	R0188	GEN	P1477	M0518	10/8/20	RQLD 2	HBR	AMC	NHFU	CAFU	DD4%	
40	R0221	ASH	P0739	MM	11/8/20	RQLD 2	HBR	AM3%	NHFU	CAFU	DDF	
41	R0187	MON	P0968	PCY	14/7/20	RQLD 2	HBR	AMFU	NHFU	CAFU	DDFU	
42	R0237	QT	P0279	PCY	2/8/20	RQLD 2	HBR	AMFU	NHFU	CAFU	DD12%	
43	R0193	QT	P1628	G10	11/8/20	RQLD 2	HBR	AMFU	NHFU	CAFU	DD5%	
44	R0203	GEN	P1458	E7	8/8/20	RQLD 2	HBR	AMFU	NHFU	CAFU	DD5%	

Lawsons ROMA 2022 Bull Average

Breed Average

		CALVING EASE					GROWTH & MATERNAL					FERTILITY		CARCASE					\$INDEX VALUE				
Lot #	Tag No	Calving Ease	DIR	DTRS	GL	BWT	200	400	600	MCW	MILK	SS	DC	CWT	RIB	RUMP	EMA	RBY	IMF	GRN	ABI	DOM	GRS
1	R0110	✓	9.8	8.6	-5.7	1.9	46	89	113	88	24	2.7	-7.2	63	-0.1	0.1	8.0	0.2	3.3	312	236	194	224
2	R6184	✓	2.0	4.3	-0.9	3.9	61	107	139	106	21	2.5	-3.2	74	-1.9	-2.3	11.9	2.2	3.2	369	273	221	261
3	R0160	✓	3.2	0.0	-2.8	3.6	54	98	127	100	23	1.5	-1.8	77	-1.1	-1.1	10.9	1.1	3.6	331	237	186	224
4	R6193	✓	3.1	1.1	-5.9	4.2	52	89	113	100	15	1.2	-4.6	71	-0.2	-0.6	10.8	1.6	2.5	299	227	189	211
5	R6195	✓	4.9	3.0	-3.8	4.4	55	97	128	105	23	1.4	-4.4	74	-1.3	-2.1	11.6	2.1	2.3	316	241	198	225
6	R6225	✓	3.9	4.5	-2.9	3.9	55	95	119	87	21	1.8	-7.1	65	0.4	0.4	9.2	0.7	3.0	354	268	221	253
7	R1209	✓	6.7	8.2	-9.0	0.5	47	83	96	72	22	1.9	-6.3	60	-0.8	-0.2	6.2	0.7	3.9	357	259	214	245
8	R0236	✓	8.9	6.0	-4.4	1.8	47	86	108	78	22	3.1	-6.0	62	-0.4	-0.8	8.4	0.9	3.2	322	242	199	230
9	R0146	✓	6.6	0.0	-4.6	2.6	55	102	135	114	21	1.4	-2.6	77	-0.8	-1.8	8.6	1.7	2.4	309	232	188	217
10	R6180		-2.0	1.6	-0.3	4.3	69	114	150	128	16	2.3	-4.6	80	-1.9	-2.4	7.9	1.3	3.5	386	276	217	264
11	R6215		0.8	-3.7	-3.9	4.7	56	100	127	107	20	1.6	-3.5	84	-1.8	-2.6	11.0	1.8	3.2	317	231	189	215
12	R6222	✓	2.9	0.7	-3.0	3.5	48	91	113	95	20	1.1	-3.8	69	-0.9	-1.4	9.6	1.4	2.2	265	203	173	185
13	R0119	✓	6.8	0.9	-8.5	1.4	48	89	108	76	26	2.4	-5.1	62	0.1	0.1	11.1	0.1	4.2	357	253	201	243
14	R0151	✓	6.1	4.4	-6.6	2.7	48	92	116	97	19	2.3	-2.8	67	0.1	-0.7	7.9	0.1	4.3	311	220	175	209
15	R0126	✓	6.4	6.2	-5.2	1.8	52	96	120	87	18	1.3	-6.7	70	0.6	-0.4	5.6	0.2	3.0	345	260	216	247
16	R0153	✓	8.6	5.6	-9.0	0.1	49	91	111	89	20	0.6	-3.1	64	0.2	-1.4	8.6	0.9	3.0	327	238	196	224
17	R6209	✓	-2.8	-5.0	-0.2	4.0	51	92	114	81	25	1.9	-4.8	59	-0.3	-0.3	8.3	-0.3	3.9	320	225	176	211
18	R6221	✓	6.8	4.2	-5.5	2.6	48	86	104	84	16	0.1	-3.0	63	-0.8	-1.4	12.3	2.1	2.3	300	229	197	212
19	R6201	✓	-1.4	-3.5	-5.9	4.2	47	84	102	66	23	1.8	-4.0	62	-0.9	-0.7	9.7	0.6	4.0	323	229	182	216
20	R6191	✓	2.1	1.0	-2.9	3.3	50	88	114	104	17	0.3	-0.7	65	-1.3	-2.7	13.6	1.6	3.8	303	213	164	199
21	R0262	✓	5.7	4.8	2.3	2.5	45	86	104	69	23	4.0	-5.9	56	-0.9	-0.8	9.7	0.6	3.8	318	237	197	226
22	R6226		-2.9	3.4	-3.3	4.1	61	101	126	93	19	0.4	-4.0	65	-1.0	-1.1	8.3	1.1	3.1	370	267	216	251
23	R6175		-2.8	-3.2	2.8	5.0	58	95	124	101	19	1.4	-6.6	71	-0.3	-1.4	6.1	-0.2	3.7	332	235	181	219
24	R0259	✓	4.6	0.1	-5.6	1.6	48	83	98	63	24	1.4	-5.1	54	0.1	0.2	9.5	-0.1	4.3	362	254	202	241
25	R6206		-0.3	-0.3	-1.8	5.1	56	102	129	114	20	1.9	-4.1	74	-1.8	-2.7	11.1	2.4	2.4	295	223	190	206
26	R0148	✓	2.5	2.4	-1.9	4.0	52	92	114	92	18	1.5	-2.3	68	-0.7	-1.7	10.8	0.7	4.1	325	229	182	215
27	R0152	✓	1.0	2.1	-1.8	3.5	50	84	107	94	16	1.1	-2.2	60	0.1	-0.8	7.3	-0.5	4.5	304	205	153	190
28	R0311	✓	4.1	7.6	-10.1	3.5	64	112	138	103	19	0.9	-4.7	77	-1.1	-1.3	8.2	0.9	3.7	407	296	244	281
29	R6068	✓	5.8	5.0	-5.0	2.4	55	97	116	90	20	2.2	-4.6	70	-0.6	-1.8	7.2	1.4	3.3	360	263	220	248
30	R0141	✓	3.0	2.3	0.0	4.4	53	97	120	93	23	3.7	-6.5	64	-1.1	-1.5	10.3	0.9	3.8	336	247	204	235
31	R5065	✓	2.2	5.6	-6.6	3.2	61	105	141	117	12	0.7	-2.5	71	0.1	0.5	7.1	0.1	3.3	357	259	200	247
32	R6105		0.6	5.8	-2.5	4.8	62	106	139	107	19	2.2	-4.0	79	-2.9	-2.6	9.4	2.0	2.6	347	261	214	246
33	R0104	✓	3.7	-2.8	-4.7	3.3	45	80	108	93	22	1.6	-3.3	61	-0.4	-0.6	8.3	-0.6	4.7	295	200	142	188
34	R0210	✓	7.7	5.8	-3.9	2.2	46	84	102	72	21	2.9	-6.0	55	-0.2	-0.4	9.4	0.4	3.9	335	245	201	234
35	R0154	✓	-0.1	-2.1	0.8	4.1	53	99	121	90	21	1.0	-1.4	73	-1.3	-1.4	10.4	0.8	4.0	334	234	188	221
36	R0245	✓	5.6	7.8	-5.5	2.0	56	101	129	107	18	1.8	-2.8	71	-1.0	-2.2	8.9	1.4	3.1	340	249	204	236
37	R0267	✓	11.0	5.9	-9.7	0.5	49	88	114	94	18	1.7	-5.3	70	0.3	-1.4	8.0	1.3	2.7	315	238	194	224
38	R0166	✓	1.4	3.7	-1.6	3.6	52	92	114	98	19	1.5	-2.9	69	-1.3	-1.6	9.9	0.7	3.9	314	221	178	207
39	R0188	✓	5.9	0.1	-7.3	2.4	54	98	130	108	20	3.0	-4.1	70	-0.6	-2.0	7.8	1.3	3.1	325	239	190	228
40	R0221	✓	4.0	5.4	-6.0	1.8	47	86	107	76	18	-0.1	-1.6	58	-1.0	-1.1	9.1	0.9	3.5	327	236	189	222
41	R0187	✓	8.0	7.1	-4.6	2.8	52	93	117	89	21	3.4	-7.8	63	-0.4	-0.4	8.1	0.3	3.5	342	256	211	244
42	R0237	✓	6.3	3.1	-6.7	2.6	54	93	116	86	21	2.1	-4.2	71	-0.1	-0.8	11.2	1.0	3.6	358	261	210	248
43	R0193	✓	6.3	4.3	-3.9	3.2	52	91	111	86	21	2.9	-6.9	69	0.8	0.8	12.3	0.3	3.8	354	261	214	249
44	R0203	✓	8.2	4.3	-8.9	2.1	52	93	119	93	20	1.4	-6.3	70	0.1	-1.4	6.6	1.1	2.4	324	247	205	232
			3.6	2.3	-4.4	3.2	53	95	119	95	20	1.9	-4.3	69	-0.7	-1.2	9.7	1.0	3.4	331	242	197	229
			2.2	2.5	-4.7	4.1	50	89	116	100	17	2.1	-4.6	66	0.0	-0.4	6.2	0.5	2.1	255	194	160	178

2022 ROMA SALE BULLS

GROUP BREEDPLAN EBVs

Lot #	Tag No	SIRE	DAM	MGS	Birth Date	Mob	ASA Status	AM Status	NH Status	CA Status	DD Status	Comments
45	R0178	GEN	P1506	M0518	29/8/20	RQLD 2	HBR	AMFU	NH1%	CAFU	DD1%	
46	R0181	GEN	P1576	M0518	29/8/20	RQLD 2	HBR	AMFU	NHFU	CAFU	DDFU	
47	R0150	MON	P1511	M0518	4/9/20	RQLD 2	APR	AMC	NHFU	CAFU	DDF	
48	R0180	ASH	P1570	KOD	13/8/20	RQLD 2	HBR	AMFU	NHFU	CAFU	DDC	
49	R1220	ASH	M0265	J5	21/7/20	RQLD 3	HBR	AMFU	NHFU	CAFU	DD4%	
50	R1051	RL	M0302	H0803	12/8/20	RQLD 3	HBR	AMFU	NHFU	CAFU	DDFU	
51	R1190	GEN	M0729	E7	22/6/20	RQLD 3	HBR	AMFU	NHFU	CAFU	DDFU	
52	R5166	J5	L0704	ANT	7/8/20	RQLD 3	HBR	AMFU	NHFU	CAFU	DDFU	
53	S0113	ASH	P0734	J5	1/3/21	S ROMA 22	HBR	AMFU	NHFU	CAFU	DDC	
54	S0019	QT	N0027	SUN	19/3/21	S ROMA 22	HBR	AMFU	NHFU	CAFU	DDF	
55	S0014	QT	N0041	J5	9/4/21	S ROMA 22	HBR	AMFU	NHFU	CAFU	DDFU	
56	S0160	QT	K0519	E0313	8/3/21	S ROMA 22	APR	AMFU	NHFU	CAFU	DD3%	
57	S0179	QT	K0799	E0313	26/3/21	S ROMA 22	HBR	AM3%	NHFU	CAFU	DDFU	
58	S0110	GEN	Q0051	M0518	1/3/21	S ROMA 22	APR	AMFU	NHFU	CAFU	DDFU	
59	S0020	M0518	Q0008	G10	17/3/21	S ROMA 22	HBR	AMFU	NHFU	CAFU	DDFU	
60	S0169	M0518	G1259	B1155	11/3/21	S ROMA 22	HBR	AMFU	NHFU	CAFU	DD7%	
61	S0166	QT	Q0016	G10	9/3/21	S ROMA 22	HBR	AM2%	NHFU	CAFU	DDF	
62	S0172	QT	K0914	ANT	25/3/21	S ROMA 22	HBR	AMFU	NHFU	CAFU	DDFU	
63	S0163	QT	P1438	J5	9/3/21	S ROMA 22	HBR	AMFU	NHFU	CAFU	DDF	
64	S0177	ASH	K0809	E7	26/3/21	S ROMA 22	HBR	AMFU	NHFU	CAFU	DD2%	
65	S0181	GEN	P0039	G10	29/3/21	S ROMA 22	APR	AMFU	NHFU	CAFU	DD8%	
66	S0018	GEN	M0014	MM	14/3/21	S ROMA 22	HBR	AMFU	NH2%	CAFU	DDC	
67	S0127	GEN	Q0068	M0518	4/3/21	S ROMA 22	HBR	AMFU	NHFU	CAFU	DD2%	
68	S0107	GEN	P0494	PROP	28/2/21	S ROMA 22	HBR	AMFU	NHFU	CAFU	DDFU	
69	S0125	GEN	Q0026	M0518	4/3/21	S ROMA 22	HBR	AMFU	NHFU	CAFU	DD5%	
70	S0155	M0518	P0358	L0483	8/3/21	S ROMA 22	HBR	AMFU	NHFU	CAFU	DDC	
71	S0168	IDX	M0866	PROP	11/3/21	S ROMA 22	HBR	AMFU	NHFU	CAFU	DDFU	
72	S0174	QT	M0812	H0803	26/3/21	S ROMA 22	APR	AMFU	NH1%	CAFU	DDFU	
73	S0171	MON	K0794	E0313	11/3/21	S ROMA 22	HBR	AM17%	NHFU	CAFU	DDFU	
74	S0145	ASH	P0289	MM	6/3/21	S ROMA 22	HBR	AMFU	NHF	CAFU	DDFU	
75	S0133	MM	K0666	TCT	5/3/21	S ROMA 22	HBR	AMFU	NHFU	CAFU	DDFU	
76	S0102	GEN	Q0020	M0518	27/2/21	S ROMA 22	HBR	AMFU	NHFU	CAFU	DDC	
77	S0189	GEN	Q0032	M0518	1/4/21	S ROMA 22	HBR	AM2%	NHFU	CAFU	DDFU	
78	S0140	QT	P0041	SUN	6/3/21	S ROMA 22	HBR	AM1%	NH1%	CAFU	DD1%	
79	S0156	QT	K0353	E7	8/3/21	S ROMA 22	APR	AMFU	NHFU	CAFU	DDF	
80	S0111	M0518	P1124	G10	1/3/21	S ROMA 22	HBR	AMFU	NHFU	CAFU	DDFU	
81	S0190	M0518	P1441	G10	1/4/21	S ROMA 22	HBR	AMFU	NHFU	CAFU	DDFU	
82	S0165	QT	Q0053	ASH	9/3/21	S ROMA 22	HBR	AMFU	NHFU	CAFU	DDFU	
83	S0139	ASH	J0429	REG	6/3/21	S ROMA 22	HBR	AMFU	NHFU	CAFU	DDF	
84	S0146	MM	N0026	SF	6/3/21	S ROMA 22	HBR	AMFU	NHFU	CAFU	DDF	
85	S0159	ASH	P0420	MM	8/3/21	S ROMA 22	HBR	AMFU	NHFU	CAFU	DDFU	
86	S0188	QT	P1439	KOD	1/4/21	S ROMA 22	HBR	AMFU	NHFU	CAFU	DDFU	
87	S0150	MM	N1049	SF	7/3/21	S ROMA 22	APR	AMFU	NHFU	CAFU	DDFU	

Lawsons ROMA 2022 Bull Average

Breed Average

		CALVING EASE					GROWTH & MATERNAL					FERTILITY		CARCASE					\$INDEX VALUE				
Lot #	Tag No	Calving Ease	DIR	DTRS	GL	BWT	200	400	600	MCW	MILK	SS	DC	CWT	RIB	RUMP	EMA	RBY	IMF	GRN	ABI	DOM	GRS
45	R0178	✓	6.1	1.3	-9.7	3.1	55	101	132	108	20	3.2	-4.7	73	-0.5	-2.1	8.7	1.6	3.1	330	247	201	235
46	R0181	✓	7.4	2.6	-10.5	1.9	56	99	126	100	20	1.3	-3.5	71	-0.5	-2.3	10.4	1.8	2.9	351	259	212	245
47	R0150	✓	5.6	2.4	-5.5	3.1	47	87	109	86	21	2.6	-6.1	59	-0.1	-0.3	9.8	0.1	3.7	310	228	185	216
48	R0180	✓	5.5	7.6	-5.1	1.7	52	91	113	80	17	2.1	-3.0	60	-0.6	-1.3	9.3	1.2	3.6	356	260	211	248
49	R1220	✓	6.5	4.7	-5.1	2.5	58	106	138	103	21	3.0	-4.8	79	-0.5	-1.3	13.2	1.9	3.1	370	280	230	271
50	R1051		1.0	-0.5	-3.2	4.7	56	98	125	101	23	2.0	-4.7	74	-2.1	-2.1	7.6	1.6	3.1	325	239	195	223
51	R1190	✓	9.4	6.2	-7.6	0.5	48	86	107	74	21	2.7	-7.4	66	0.7	-0.5	9.7	1.5	2.4	334	260	219	247
52	R5166	✓	9.6	4.9	-6.7	1.7	50	89	115	99	20	1.7	-6.3	73	0.2	0.2	9.1	0.5	3.3	326	242	194	229
53	S0113	✓	2.5	4.3	-7.6	4.4	63	110	143	117	20	1.7	-3.5	82	-0.9	-1.1	10.3	1.6	2.9	364	270	219	256
54	S0019		-3.1	-2.1	-2.8	6.4	63	108	136	121	19	2.4	-4.2	80	-1.7	-1.8	10.3	2.0	2.9	329	242	201	225
55	S0014	✓	3.8	-0.4	-2.8	4.2	57	102	128	96	24	2.8	-5.2	81	-0.6	-0.6	10.6	1.3	3.1	352	262	216	249
56	S0160		-1.3	-0.8	-2.0	4.7	55	97	124	106	23	2.5	-3.4	75	-1.4	-2.1	9.8	1.3	2.8	287	210	170	193
57	S0179		-1.7	-0.3	-4.7	4.9	58	103	131	111	22	2.4	-3.5	78	-1.5	-2.0	9.6	1.4	3.1	314	228	186	213
58	S0110	✓	6.4	2.8	-10.0	2.9	53	93	122	102	19	2.1	-4.5	69	-0.3	-1.3	9.2	1.3	3.1	325	242	194	228
59	S0020	✓	1.6	-2.5	-4.2	4.4	52	94	115	90	24	1.9	-5.4	67	-0.2	-0.2	11.9	0.0	4.5	346	242	192	230
60	S0169	✓	-2.2	-4.5	-1.4	3.1	42	81	97	68	24	1.6	-4.6	56	-0.9	-1.2	9.8	0.4	3.7	283	202	163	188
61	S0166		-2.0	-0.6	-1.7	6.6	61	105	132	110	19	2.5	-4.5	76	-1.5	-1.8	12.6	1.3	4.0	345	248	201	234
62	S0172	✓	7.2	5.0	-6.0	2.5	58	101	124	104	16	3.0	-3.0	77	-0.7	-1.5	15.2	2.7	2.2	335	257	221	243
63	S0163	✓	5.3	1.0	-1.9	2.8	53	95	116	93	23	2.6	-4.1	74	-0.6	-1.0	12.2	1.5	3.2	334	246	204	232
64	S0177	✓	1.6	6.3	-5.4	4.3	59	102	131	101	20	1.8	-5.3	74	-1.0	-1.0	9.3	1.4	2.9	357	268	219	254
65	S0181	✓	4.3	2.5	-4.8	3.6	55	97	122	108	17	1.4	-4.9	70	0.0	-1.8	9.9	0.9	3.4	322	236	193	220
66	S0018	✓	9.1	4.8	-9.1	-0.2	44	83	101	72	20	1.5	-2.7	58	-0.4	-2.0	8.9	1.4	3.1	314	231	190	218
67	S0127	✓	5.9	2.4	-6.2	1.8	51	94	116	88	21	1.8	-4.7	65	-0.3	-1.5	8.9	1.3	3.2	339	251	208	237
68	S0107	✓	10.3	7.4	-8.9	0.5	57	101	130	106	21	1.9	-6.8	73	0.8	-0.7	7.6	0.5	3.3	371	274	221	262
69	S0125	✓	5.7	0.3	-6.5	2.2	53	96	122	95	22	2.1	-4.4	71	-0.4	-1.9	9.0	1.3	3.3	342	250	202	238
70	S0155	✓	3.1	-5.5	-3.3	3.1	49	91	113	88	26	2.9	-4.3	66	-0.6	0.2	9.9	0.5	3.8	320	228	181	216
71	S0168	✓	1.6	2.9	-0.7	3.5	54	94	115	86	21	0.4	-5.3	64	-0.1	-1.0	9.7	0.8	2.9	333	247	206	230
72	S0174		-4.4	-2.4	-3.3	6.5	64	107	139	117	19	2.8	-4.6	83	-1.8	-2.1	11.9	2.1	3.1	338	248	201	234
73	S0171	✓	2.2	3.8	-1.3	3.8	45	88	108	94	20	3.1	-6.4	59	-1.3	-1.5	7.5	0.7	3.2	263	198	169	183
74	S0145	✓	1.4	3.8	-5.2	3.9	59	105	136	107	20	1.2	-1.6	77	-1.6	-1.9	11.5	1.6	3.5	355	257	204	244
75	S0133	✓	2.3	2.6	-5.5	2.1	45	83	101	90	21	1.1	-1.6	59	-0.9	-1.5	9.1	0.6	3.6	279	194	155	179
76	S0102	✓	7.4	2.7	-8.0	2.0	54	98	124	99	21	2.4	-4.5	69	-0.4	-1.5	7.5	1.0	3.1	336	248	203	235
77	S0189		-0.5	-4.6	-4.0	5.1	59	105	138	120	21	2.4	-3.9	76	-0.8	-2.3	8.7	1.4	3.2	316	229	183	215
78	S0140	✓	2.4	1.5	-2.0	3.6	54	98	122	97	22	1.8	-3.9	72	-1.5	-1.9	9.6	1.4	3.3	328	240	198	225
79	S0156	✓	3.7	4.2	-2.3	3.4	51	91	111	83	22	2.6	-5.5	70	-0.6	-0.6	10.3	1.2	3.1	332	248	207	235
80	S0111	✓	3.5	0.3	-5.3	3.6	53	97	118	91	23	1.5	-4.4	66	-0.7	-0.9	12.4	0.3	4.5	354	249	200	237
81	S0190		-6.1	-5.1	-1.7	6.5	55	98	122	101	22	1.5	-4.6	68	-0.6	-0.9	12.3	0.2	4.5	316	218	171	204
82	S0165	✓	0.9	3.0	-2.4	4.0	57	101	125	93	22	2.5	-3.5	75	-1.7	-2.0	11.8	2.0	3.1	348	257	214	244
83	S0139	✓	0.3	2.2	-5.0	3.9	51	92	117	84	19	0.9	-3.8	70	-1.2	-1.8	9.9	1.7	3.3	332	246	199	232
84	S0146	✓	5.2	1.2	-2.4	1.5	46	87	105	76	24	1.5	-1.4	63	-0.9	-1.0	9.5	0.5	4.4	331	229	180	217
85	S0159	✓	2.3	4.2	-2.4	2.7	55	96	119	86	21	1.0	-1.8	67	-1.7	-1.9	11.2	1.4	3.6	358	256	205	242
86	S0188	✓	1.3	2.5	-2.8	4.3	55	99	123	109	18	3.2	-4.4	76	-0.6	-1.6	10.0	1.5	3.0	306	227	191	213
87	S0150	✓	4.6	2.5	-1.9	2.2	47	84	100	73	20	1.7	-2.6	62	-0.6	-0.7	10.7	0.9	3.7	327	234	190	221
			3.6	2.3	-4.4	3.2	53	95	119	95	20	1.9	-4.3	69	-0.7	-1.2	9.7	1.0	3.4	331	242	197	229
			2.2	2.5	-4.7	4.1	50	89	116	100	17	2.1	-4.6	66	0.0	-0.4	6.2	0.5	2.1	255	194	160	178

1 LAWSONS MONTALTO R110 AI

Birth Date: 19/6/20 **AM:** AMFU **NH:** NHFU **CA:** CAFU **DD:** DD6%

Society ID: VLYR110 **ASA:** APR **Johnes:** J-Bas 6 **Mob:** RQLD 1 **JBAS:** J-Bas 6

Sire: TE MANIA BERKLEY B1
TE MANIA MONTALTO M1314
TE MANIA MITTAGONG H390

Dam: LAYRVALE BARTEL E7
LAWSONS BARTEL E7 K1048
LAWSONS C511 H517

TE MANIA YORKSHIRE Y437
TE MANIA LOWAN Z53
TE MANIA BANJO B170
EAGLEHAWK JEDDA Z48
TE MANIA BARTEL B219
EAGLEHAWK JEDDA B32
RENNYLEA C511
LAWSONS EQUATOR D496

July 2022 Trans Tasman Angus Cattle Evaluation									
Calving Ease ✓				Growth and Maternal					
	DIR	DTRS	GL	BWT	200	400	600	MCW	MILK
EBVs	9.8	8.6	-5.7	1.9	46	89	113	88	24
Acc	57	50	85	74	69	70	73	68	58
Fertility			Carcase						
	SS	DC	CWT	RIB	RUMP	EMA	RBV	IMF	
EBVs	2.7	-7.2	63	-0.1	0.1	8.0	0.2	3.3	
Acc	72	44	60	61	59	60	59	58	
	GRN	312	DOM	236	ABI	194	GRS	224	

An attractive, big-butted, heavy weight Montalto son. R110 is extremely well balanced in every key economic trait and has the looks to go with his excellent genetic predictions (EBVs). R110 is the #3 ranked Calving Ease Direct (DIR) bull in the Sale at +9.8, top 3% of the breed.



Moderate maturity pattern and outstanding calving ease sire. One of the strong features of our breeding objectives is calving ease and there are 73/87 (84%) of these Sale bulls that are rock-solid genuine calving ease bulls (84%). We feel this is not only a key economic trait but also the number one trait for animal welfare, particularly in the north where supervision of heifers is not a practical option.

2 LAWSONS KI ASHLAND R6184 AI

Birth Date: 24/8/20 **AM:** AMFU **NH:** NHFU **CA:** CAFU **DD:** DDC

Society ID: VLYR6184 **ASA:** HBR **Johnes:** J-Bas 6 **Mob:** RQLD 1 **JBAS:** J-Bas 6

Sire: GAR EARLY BIRD
GAR ASHLAND
CHAIR ROCK AMBUSH 1018

Dam: LAWSONS HARRY H234
LAWSONS HARRY L1842
LAWSONS BARTEL E7 H1003

GAR DAYLIGHT
GAR PROGRESS 830
B/R AMBUSH 28
EAGLEHAWK JEDDA Z48
TE MANIA AFRICA A217
LAWSONS NEW DESIGN 5050 E1165
AYRVALE BARTEL E7
LAWSONS DINKY-DI F393

July 2022 Trans Tasman Angus Cattle Evaluation									
Calving Ease ✓				Growth and Maternal					
	DIR	DTRS	GL	BWT	200	400	600	MCW	MILK
EBVs	2.0	4.3	-0.9	3.9	61	107	139	106	21
Acc	59	47	85	74	69	69	68	64	59
Fertility			Carcase						
	SS	DC	CWT	RIB	RUMP	EMA	RBV	IMF	
EBVs	2.5	-3.2	74	-1.9	-2.3	11.9	2.2	3.2	
Acc	73	36	60	62	61	61	59	59	
	GRN	369	DOM	273	ABI	221	GRS	261	



These Ashland punch more kilograms into a moderate sized package than any sire we have ever seen! Progeny make fantastic high value steers and highly productive replacement females. R6184 is the equal #7 Heavy Grain Index (GRN) bull in the Sale, top 2% of the breed and #5 ranked for 600D Growth which represents top 10% of the breed. Equal #9 ranked Eye Muscle Area (EMA) bull in the Sale at +11.9, top 2% of the breed.

3 LAWSONS MOMENTUM R160 AI

Birth Date: 15/8/20 **AM:** AMFU **NH:** NHFU **CA:** CAFU **DD:** DDFU

Society ID: VLYR160 **ASA:** HBR **Johnes:** J-Bas 6 **Mob:** RQLD 1 **JBAS:** J-Bas 6

Sire: GAR PROGRESS
GAR MOMENTUM
GAR BIG EYE 1770

Dam: LAWSONS LINKEDIN L483
LAWSONS LINKEDIN P1429
LAWSONS BARTEL E7 J976

GAR PREDESTINED
GAR OBJECTIVE 2345
ALC BIG EYE D09N
EAGLEHAWK JEDDA Z48
PARINGA JUDD J5
LAWSONS BARTEL E7 H221
AYRVALE BARTEL E7
LAWSONS TANK B1155 G481

July 2022 Trans Tasman Angus Cattle Evaluation									
Calving Ease ✓				Growth and Maternal					
	DIR	DTRS	GL	BWT	200	400	600	MCW	MILK
EBVs	3.2	0.0	-2.8	3.6	54	98	127	100	23
Acc	62	55	85	74	69	70	69	66	63
Fertility			Carcase						
	SS	DC	CWT	RIB	RUMP	EMA	RBV	IMF	
EBVs	1.5	-1.8	77	-1.1	-1.1	10.9	1.1	3.6	
Acc	73	46	63	64	63	62	62	61	
	GRN	331	DOM	237	ABI	186	GRS	224	



Super slick coated and attractive Momentum son. Momentum has literally taken the Angus breed to a new level of carcase traits and his daughters are moderate, fertile and handle the tough going! R160 ranks in the top 10% of the breed for Heavy Grain Index (GRN) and Marbling (IMF) plus top 5% for Eye Muscle Area (EMA).

4 LAWSONS KI INDEX R6193 AI

Birth Date: 31/8/20 AM: AMFU NH: NHFU CA: CAFU DD: DDFU
 Society ID: VLYR6193 ASA: HBR Johnes: J-Bas 6 Mob: RQLD 1 JBAS J-Bas 6
 Sire: VAR INDEX GAR INGENUITY GAR NEW DESIGN 5050 GAR OBJECTIVE 1067 CONNEALY ONWARD EAGLEHAWK JEDDA Z48
 SANDPOINT BLACKBIRD 8809 TUWHARETOA REGENT D145 TE MANIA AMBASSADOR A134 LAWSONS HENRY VIII Y5 RITO 2V1 OF 2536 1407 LAWSONS ROCKY W129 Z850
 Dam: LAWSONS KI REGENT K6423 LAWSONS RITO C94

July 2022 Trans Tasman Angus Cattle Evaluation

Calving Ease ✓		Growth and Maternal							
DIR DTRS GL BWT		200	400	600	MCW	MILK			
EBVs	3.1	1.1	-5.9	4.2	52	89	113	100	15
Acc	60	52	85	74	69	70	68	66	62
Fertility				Carcase					
SS DC CWT RIB RUMP				EMA	RBY IMF				
EBVs	1.2	-4.6	71	-0.2	-0.6	10.8	1.6	2.5	
Acc	73	45	62	63	63	62	61	60	
GRN		299	DOM	227	ABI	189	GRS	211	

The next three Lots are all sired by VAR Index 3282 who is a good outcross option and at +14.9 EMA is top 1% plus he is extremely good on docility an calving ease as you can see by Lots 4,5 and 6. R6193 ranks in the top 5% of the breed for Eye Muscle Area (EMA).



5 LAWSONS KI INDEX R6195 AI

Birth Date: 17/9/20 AM: AMF NH: NHFU CA: CAFU DD: DDFU
 Society ID: VLYR6195 ASA: HBR Johnes: J-Bas 6 Mob: RQLD 1 JBAS J-Bas 6
 Sire: VAR INDEX GAR INGENUITY GAR NEW DESIGN 5050 GAR OBJECTIVE 1067 CONNEALY ONWARD EAGLEHAWK JEDDA Z48
 SANDPOINT BLACKBIRD 8809 LAWSONS INCREDIBLE H803 AYRVALE BARTEL E7 LAWSONS DINKY DI E447 YTHANBRAE HENRY VIII LAWSONS NEW DESIGN 1407 Z418
 Dam: LAWSONS INCREDIBLE L1849 LAWSONS HENRY VIII F8408

July 2022 Trans Tasman Angus Cattle Evaluation

Calving Ease ✓		Growth and Maternal							
DIR DTRS GL BWT		200	400	600	MCW	MILK			
EBVs	4.9	3.0	-3.8	4.4	55	97	128	105	23
Acc	60	51	85	74	70	70	68	67	63
Fertility				Carcase					
SS DC CWT RIB RUMP				EMA	RBY IMF				
EBVs	1.4	-4.4	74	-1.3	-2.1	11.6	2.1	2.3	
Acc	74	43	62	63	63	62	61	60	
GRN		316	DOM	241	ABI	198	GRS	225	

Long bodied Index son with an ideal growth curve, loads of muscle and ideal to go over either heifers or cows. R6195 ranks in the top 5% of the breed for Eye Muscle Area (EMA).



6 LAWSONS KI INDEX R6225 AI

Birth Date: 16/9/20 AM: AMFU NH: NH1% CA: CAFU DD: DDFU
 Society ID: VLYR6225 ASA: HBR Johnes: J-Bas 6 Mob: RQLD 1 JBAS J-Bas 6
 Sire: VAR INDEX GAR INGENUITY GAR NEW DESIGN 5050 GAR OBJECTIVE 1067 CONNEALY ONWARD EAGLEHAWK JEDDA Z48
 SANDPOINT BLACKBIRD 8809 C R A BEXTOR 872 5205 608 GAR OBJECTIVE 1885 AYRVALE BARTEL E7 LAWSONS NEW DESIGN 1407 Z1492
 Dam: LAWSONS KI PROPHET M6278 LAWSONS BARTEL E7 H1109

July 2022 Trans Tasman Angus Cattle Evaluation

Calving Ease ✓		Growth and Maternal							
DIR DTRS GL BWT		200	400	600	MCW	MILK			
EBVs	3.9	4.5	-2.9	3.9	55	95	119	87	21
Acc	59	51	85	74	69	69	67	64	61
Fertility				Carcase					
SS DC CWT RIB RUMP				EMA	RBY IMF				
EBVs	1.8	-7.1	65	0.4	0.4	9.2	0.7	3.0	
Acc	73	44	62	62	62	62	60	60	
GRN		354	DOM	268	ABI	221	GRS	253	

Index x Prophet with another with that perfect growth curve and still lots of carcass. R6225 ranks in the top 5% of the breed for Heavy Grain Index (GRN).



2 YEAR OLD BULLS

7 LAWSONS ASHLAND R1209 AI

Birth Date:	9/7/20	AM:	AMFU	NH:	NHFU	CA:	CAFU	DD:	DD3%
Society ID:	VLYR1209	ASA:	HBR	Johnes:	J-Bas 6	Mob:	RQLD 1	JBAS	J-Bas 6
Sire:	GAR EARLY BIRD GAR ASHLAND CHAIR ROCK AMBUSH 1018				GAR DAYLIGHT GAR PROGRESS 830 B/R AMBUSH 28 EAGLEHAWK JEDDA 248				
Dam:	PARINGA JUDD J5 LAWSONS JUDD M76 LAWSONS PREDESTINED C798				TUWHARETOA REGENT D145 STRATHWEN BERKLEY WILPENA F30 GAR PREDESTINED LAWSONS YIELD GRADE Z1420				

July 2022 Trans Tasman Angus Cattle Evaluation									
Calving Ease ✓				Growth and Maternal					
	DIR	DTRS	GL	BWT	200	400	600	MCW	MILK
EBVs	6.7	8.2	-9.0	0.5	47	83	96	72	22
Acc	62	51	73	74	72	72	73	70	66
Fertility				Carcase					
	SS	DC	CWT	RIB	RUMP	EMA	RBV	IMF	
EBVs	1.9	-6.3	60	-0.8	-0.2	6.2	0.7	3.9	
Acc	72	41	67	69	66	66	66	65	
	GRN	357	DOM	259	ABI	214	GRS	245	

The maternal and carcass potential of these bulls is unmatched in the Angus breed, attractive docile Ashland x Judd son. R1209 ranks in the top 5% of the breed for Heavy Grain Index (GRN) and Marbling (IMF).



8 LAWSONS MONTALTO R236 AI

Birth Date:	13/7/20	AM:	AMFU	NH:	NHFU	CA:	CAFU	DD:	DDF
Society ID:	VLYR236	ASA:	HBR	Johnes:	J-Bas 6	Mob:	RQLD 1	JBAS	J-Bas 6
Sire:	TE MANIA BERKLEY B1 TE MANIA MONTALTO M1314 TE MANIA MITTAGONG H390				TE MANIA YORKSHIRE Y437 TE MANIA LOWAN Z53 TE MANIA BANJO B170 EAGLEHAWK JEDDA 248				
Dam:	GAR RADIANCE LAWSONS RADIANCE P1280 LAWSONS GOODTHING K612				GAR SUNRISE GAR IN SURE N1022 DUNOON GOODTHING G167 LAWSONS NEW DESIGN 5050 E1023				

July 2022 Trans Tasman Angus Cattle Evaluation									
Calving Ease ✓				Growth and Maternal					
	DIR	DTRS	GL	BWT	200	400	600	MCW	MILK
EBVs	8.9	6.0	-4.4	1.8	47	86	108	78	22
Acc	55	46	85	73	67	68	66	62	56
Fertility				Carcase					
	SS	DC	CWT	RIB	RUMP	EMA	RBV	IMF	
EBVs	3.1	-6.0	62	-0.4	-0.8	8.4	0.9	3.2	
Acc	71	39	57	59	59	58	57	56	
	GRN	322	DOM	242	ABI	199	GRS	230	

Good butt shape on this Montalto son and very easy calving with moderate maturity pattern. #7 ranked Calving Ease Direct (DIR) bull in the Sale at +8.9, top 6% of the breed.



9 LAWSONS GENUINE R146 AI

Birth Date:	18/8/20	AM:	AMFU	NH:	NHFU	CA:	CAFU	DD:	DD3%
Society ID:	VLYR146	ASA:	HBR	Johnes:	J-Bas 6	Mob:	RQLD 1	JBAS	J-Bas 6
Sire:	K C F BENNETT ABSOLUTE GAR GENUINE GAR DAYBREAK 342				S A V FINAL ANSWER 0035 THOMAS MISS LUCY 5152 MCC DAYBREAK EAGLEHAWK JEDDA 248				
Dam:	LAWSONS LINKEDIN L483 LAWSONS LINKEDIN P1459 LAWSONS MOMENTUM L774				PARINGA JUDD J5 LAWSONS BARTEL E7 H221 GAR MOMENTUM LAWSONS EVIDENT H319				

July 2022 Trans Tasman Angus Cattle Evaluation									
Calving Ease ✓				Growth and Maternal					
	DIR	DTRS	GL	BWT	200	400	600	MCW	MILK
EBVs	6.6	0.0	-4.6	2.6	55	102	135	114	21
Acc	55	43	85	74	68	69	67	61	56
Fertility				Carcase					
	SS	DC	CWT	RIB	RUMP	EMA	RBV	IMF	
EBVs	1.4	-2.6	77	-0.8	-1.8	8.6	1.7	2.4	
Acc	71	36	59	59	59	59	56	56	
	GRN	309	DOM	232	ABI	188	GRS	217	

Massive growth potential and outstanding calving ease in these GAR Genuine sons. R146 is a deep bodied, quiet natured bull and larger framed compared with other bulls but still moderate maturity pattern.



10 LAWSONS KI ASHLAND R6180 AI

Birth Date: 8/9/20 AM: AMFU NH: NHFU CA: CAFU DD: DD2%
 Society ID: VLYR6180 ASA: HBR Johnes: J-Bas 6 Mob: RQLD 1 JBAS J-Bas 6
 Sire: GAR EARLY BIRD GAR DAYLIGHT GAR PROGRESS 830
 GAR ASHLAND B/R AMBUSH 28 EAGLEHAWK JEDDA Z48
 CHAIR ROCK AMBUSH 1018 C R A BEXTOR 872 5205 608
 GAR PROPHET GAR OBJECTIVE 1885
 Dam: LAWSONS KI PROPHET L6324 LAWSONS TANK X1235
 LAWSONS TANK C131 LAWSONS GAR NEW DESIGN 1407 Z564

July 2022 Trans Tasman Angus Cattle Evaluation									
	Calving Ease				Growth and Maternal				
	DIR	DTRS	GL	BWT	200	400	600	MCW	MILK
EBVs	-2.0	1.6	-0.3	4.3	69	114	150	128	16
Acc	62	53	85	73	72	72	73	71	66
	Fertility			Carcase					
	SS	DC	CWT	RIB	RUMP	EMA	RBV	IMF	
EBVs	2.3	-4.6	80	-1.9	-2.4	7.9	1.3	3.5	
Acc	72	43	68	70	67	66	67	66	
	GRN	386	DOM	276	ABI	217	GRS	264	

#2 Heavy Grain Index (GRN) bull in the Sale, top 1% of the breed. Massive horsepower here, R6180 is the highest 600D Growth bull in this year's Sale line-up at +150, top 5% of the breed plus top 10% for Marbling (IMF). Please note some excessive white on R6180.



11 LAWSONS KI QUANTUM R6215 AI

Birth Date: 17/8/20 AM: AMFU NH: NHFU CA: CAFU DD: DD1%
 Society ID: VLYR6215 ASA: HBR Johnes: J-Bas 6 Mob: RQLD 1 JBAS J-Bas 6
 Sire: GAR MOMENTUM GAR PROGRESS GAR BIG EYE 1770
 GAR QUANTUM CONNEALY IN SURE 8524
 GAR IN SURE 1524 EAGLEHAWK JEDDA Z48
 TUWHARETOA REGENT D145 TE MANIA AMBASSADOR A134
 Dam: LAWSONS KI REGENT M6389 LAWSONS HENRY VIII Y5
 LAWSONS INVINCIBLE G202 LAWSONS INVINCIBLE G202 LAWSONS PAYLOAD X951 E8089

July 2022 Trans Tasman Angus Cattle Evaluation									
	Calving Ease				Growth and Maternal				
	DIR	DTRS	GL	BWT	200	400	600	MCW	MILK
EBVs	0.8	-3.7	-3.9	4.7	56	100	127	107	20
Acc	56	47	85	74	68	68	66	62	58
	Fertility			Carcase					
	SS	DC	CWT	RIB	RUMP	EMA	RBV	IMF	
EBVs	1.6	-3.5	84	-1.8	-2.6	11.0	1.8	3.2	
Acc	71	41	60	60	60	60	58	57	
	GRN	317	DOM	231	ABI	189	GRS	215	

Stylish bull with the looks and presence that will appeal. The Quantum cattle are the same sire group as Momentous and is also sired by GAR Momentum. The Quantum sons are the highest growth of the 3 sires. Top 5% of the breed for Eye Muscle Area (EMA).



12 LAWSONS KI INDEX R6222 AI

Birth Date: 16/9/20 AM: AMFU NH: NHFU CA: CAFU DD: DDFU
 Society ID: VLYR6222 ASA: APR Johnes: J-Bas 6 Mob: RQLD 1 JBAS J-Bas 6
 Sire: GAR INGENUITY GAR NEW DESIGN 5050
 VAR INDEX GAR OBJECTIVE 1067
 SANDPOINT BLACKBIRD 8809 CONNEALY ONWARD EAGLEHAWK JEDDA Z48
 LAWSONS KI REGENT J6020 TUWHARETOA REGENT D145
 Dam: LAWSONS KI REGENT J6020 M6185 LANDFALL FORTUNE E463
 LANDFALL DAINTY D251 BOOROOMOOKA WHITHORN W267
 LANDFALL DAINTY A231

July 2022 Trans Tasman Angus Cattle Evaluation									
	Calving Ease ✓				Growth and Maternal				
	DIR	DTRS	GL	BWT	200	400	600	MCW	MILK
EBVs	2.9	0.7	-3.0	3.5	48	91	113	95	20
Acc	57	48	84	74	68	68	66	62	59
	Fertility			Carcase					
	SS	DC	CWT	RIB	RUMP	EMA	RBV	IMF	
EBVs	1.1	-3.8	69	-0.9	-1.4	9.6	1.4	2.2	
Acc	71	40	59	60	60	59	57	57	
	GRN	265	DOM	203	ABI	173	GRS	185	

Another heavily muscled Index son with exceptional calving ease and moderate MCW. R6222 ranks in the top 10% of the breed for Eye Muscle Area (EMA).



13 LAWSONS MOMENTOUS R119 AI

Birth Date: 4/8/20 **AM:** AMFU **NH:** NHFU **CA:** CAFU **DD:** DD2%
Society ID: VLYR119 **ASA:** HBR **Johnes:** J-Bas 6 **Mob:** RQLD 1 **JBAS:** J-Bas 6
Sire: GAR MOMENTUM
 LAWSONS MOMENTOUS M518
 LAWSONS AFRICA H229
Dam: GAR PROPHECY
 LAWSONS PROPHECY P1145
 LAWSONS JUDD M265

July 2022 Trans Tasman Angus Cattle Evaluation

Calving Ease		Growth and Maternal							
DIR	DTRS	GL	BWT	200	400	600	MCW	MILK	
EBVs	6.8	0.9	-8.5	1.4	48	89	108	76	26
Acc	61	53	85	74	69	70	72	67	61

Fertility		Carcase						
SS	DC	CWT	RIB	RUMP	EMA	RBV	IMF	
EBVs	2.4	-5.1	62	0.1	0.1	11.1	0.1	4.2
Acc	72	42	62	63	62	61	60	60

GRN	357	DOM	253	ABI	201	GRS	243
------------	------------	------------	------------	------------	------------	------------	------------

An absolute beast, this super quiet natured Momentous x Prophecy son catches your eye. The carcass potential in these bulls will take any herd to a new level. R119 ranks in the top 5% of the breed for Heavy Grain Index (GRN), Marbling (IMF) and Eye Muscle Area (EMA).



14 LAWSONS MOMENTUM R151 AI

Birth Date: 29/8/20 **AM:** AMFU **NH:** NHFU **CA:** CAFU **DD:** DDF
Society ID: VLYR151 **ASA:** HBR **Johnes:** J-Bas 6 **Mob:** RQLD 1 **JBAS:** J-Bas 6
Sire: GAR PROGRESS
 GAR MOMENTUM
 GAR BIG EYE 1770
Dam: RENNYLEA KODAK K522
 LAWSONS KODAK P1626
 LAWSONS SELECTIVE D435

July 2022 Trans Tasman Angus Cattle Evaluation

Calving Ease		Growth and Maternal							
DIR	DTRS	GL	BWT	200	400	600	MCW	MILK	
EBVs	6.1	4.4	-6.6	2.7	48	92	116	97	19
Acc	62	55	85	74	69	70	69	66	64

Fertility		Carcase						
SS	DC	CWT	RIB	RUMP	EMA	RBV	IMF	
EBVs	2.3	-2.8	67	0.1	-0.7	7.9	0.1	4.3
Acc	73	46	63	64	64	63	62	62

GRN	311	DOM	220	ABI	175	GRS	209
------------	------------	------------	------------	------------	------------	------------	------------

This high carcass merit, calving ease Momentum son is stout, smooth looking and exceptionally quiet. R151 ranks in the top 5% of the breed for Marbling (IMF).



15 LAWSONS GENUINE R126 AI

Birth Date: 13/8/20 **AM:** AMF **NH:** NHFU **CA:** CAFU **DD:** DDFU
Society ID: VLYR126 **ASA:** HBR **Johnes:** J-Bas 6 **Mob:** RQLD 1 **JBAS:** J-Bas 6
Sire: K C F BENNETT ABSOLUTE
 GAR GENUINE
 GAR DAYBREAK 342
Dam: AYRVALE BARTEL E7
 LAWSONS BARTEL E7 H283
 LAWSONS TANK D10

July 2022 Trans Tasman Angus Cattle Evaluation

Calving Ease		Growth and Maternal							
DIR	DTRS	GL	BWT	200	400	600	MCW	MILK	
EBVs	6.4	6.2	-5.2	1.8	52	96	120	87	18
Acc	56	46	85	75	70	70	72	67	59

Fertility		Carcase						
SS	DC	CWT	RIB	RUMP	EMA	RBV	IMF	
EBVs	1.3	-6.7	70	0.6	-0.4	5.6	0.2	3.0
Acc	70	40	61	61	61	60	58	58

GRN	345	DOM	260	ABI	216	GRS	247
------------	------------	------------	------------	------------	------------	------------	------------

Massive curve bending attributes and combines two highly proven calving ease sires in Genuine and Bartel E7. Top 5% of the breed for Heavy Grain Index (GRN).



16 LAWSONS GENUINE R153 AI

Birth Date: 29/8/20 AM: AMFU NH: NHF CA: CAF DD: DDFU
 Society ID: VLYR153 ASA: HBR Johnes: J-Bas 6 Mob: RQLD 1 JBAS J-Bas 6
 Sire: GAR GENUINE
 K C F BENNETT ABSOLUTE
 GAR DAYBREAK 342
 GAR MOMENTUM
 LAWSONS MOMENTUM P1621
 LAWSONS OBJECTIVE D808
 S A V FINAL ANSWER 0035
 THOMAS MISS LUCY 5152
 MCC DAYBREAK
 EAGLEHAWK JEDDA Z48
 GAR PROGRESS
 GAR BIG EYE 1770
 S S OBJECTIVE T510 OT26
 LAWSONS NEW DESIGN 208 Z366

July 2022 Trans Tasman Angus Cattle Evaluation

Calving Ease ✓		Growth and Maternal								
DIR DTRS GL BWT		200	400	600	MCW	MILK				
EBVs	8.6	5.6	-9.0	0.1	49	91	111	89	20	
Acc	55	45	85	74	69	69	68	62	57	
Fertility				Carcase						
SS DC CWT RIB				RUMP	EMA	RBV	IMF			
EBVs	0.6	-3.1	64	0.2	-1.4	8.6	0.9	3.0		
Acc	71	38	60	61	60	60	58	58		
GRN		327	DOM	238	ABI	196	GRS	224		

Notably docile and again rock-solid calving ease bull, R153 is the #8 ranked Calving Ease Direct (DIR) bull in the Sale at +8.6, top 7% of the breed plus top 10% for Heavy Grain Index (GRN).



17 LAWSONS KI MOMENTOUS R6209 AI

Birth Date: 28/8/20 AM: AMFU NH: NHFU CA: CAFU DD: DD7%
 Society ID: VLYR6209 ASA: APR Johnes: J-Bas 6 Mob: RQLD 1 JBAS J-Bas 6
 Sire: LAWSONS MOMENTOUS M518
 GAR MOMENTUM
 LAWSONS AFRICA H229
 GAR PROGRESS
 GAR BIG EYE 1770
 TE MANIA AFRICA A217
 EAGLEHAWK JEDDA Z48
 Dam: LAWSONS KI PROPHET M6245
 LAWSONS PAYLOAD X951 E8248
 C R A BEXTOR 872 5205 608
 GAR OBJECTIVE 1885
 LAWSONS PAYLOAD X951
 LAWSONS FUTURE DIRECTION X902

July 2022 Trans Tasman Angus Cattle Evaluation

Calving Ease ✓		Growth and Maternal								
DIR DTRS GL BWT		200	400	600	MCW	MILK				
EBVs	-2.8	-5.0	-0.2	4.0	51	92	114	81	25	
Acc	62	53	85	73	69	69	67	64	61	
Fertility				Carcase						
SS DC CWT RIB				RUMP	EMA	RBV	IMF			
EBVs	1.9	-4.8	59	-0.3	-0.3	8.3	-0.3	3.9		
Acc	72	43	61	62	62	61	59	59		
GRN		320	DOM	225	ABI	176	GRS	211		

Long bodied bull and smooth coated. R6209 ranks in the top 5% of the breed for Marbling (IMF). Momentous bull calves and daughters have been breaking records across Australia, we have over 1,200 of his 3,744 registered calves so in our program giving you the power of numbers to select from with superior genetics at an affordable price.



18 LAWSONS KI INDEX R6221 AI

Birth Date: 1/9/20 AM: AMFU NH: NHFU CA: CAFU DD: DDFU
 Society ID: VLYR6221 ASA: HBR Johnes: J-Bas 6 Mob: RQLD 1 JBAS J-Bas 6
 Sire: VAR INDEX
 GAR INGENUITY
 SANDPOINT BLACKBIRD 8809
 GAR SURE FIRE
 LAWSONS KI SURE FIRE L6316
 LANDFALL ELSA F428
 GAR NEW DESIGN 5050
 GAR OBJECTIVE 1067
 CONNEALY ONWARD
 EAGLEHAWK JEDDA Z48
 CONNEALY IN SURE 8524
 CHAIR ROCK 5050 GAR 8086
 TE MANIA INFINITY 04 379 AB
 LANDFALL ELSA V47

July 2022 Trans Tasman Angus Cattle Evaluation

Calving Ease ✓		Growth and Maternal								
DIR DTRS GL BWT		200	400	600	MCW	MILK				
EBVs	6.8	4.2	-5.5	2.6	48	86	104	84	16	
Acc	60	51	85	74	70	70	69	65	63	
Fertility				Carcase						
SS DC CWT RIB				RUMP	EMA	RBV	IMF			
EBVs	0.1	-3.0	63	-0.8	-1.4	12.3	2.1	2.3		
Acc	73	44	62	63	63	62	61	61		
GRN		300	DOM	229	ABI	197	GRS	212		

Loads of capacity and muscle in this calving ease VAR Index son, R221 is the equal #6 Eye Muscle Area (EMA) bull in the Sale at +12.3, top 2% of the breed!



2 YEAR OLD BULLS

19 LAWSONS KI MOMENTOUS R6201 AI

Birth Date:	30/8/20	AM:	AMFU	NH:	NHFU	CA:	CAFU	DD:	DDFU
Society ID:	VLYR6201	ASA:	HBR	Johnes:	J-Bas 6	Mob:	RQLD 1	JBAS	J-Bas 6
Sire:	GAR MOMENTUM LAWSONS MOMENTOUS M518 LAWSONS AFRICA H229				GAR PROGRESS GAR BIG EYE 1770 TE MANIA AFRICA A217 EAGLEHAWK JEDDA Z48				
Dam:	DUNOON GOODTHING G167 LAWSONS GOODTHING K349 LAWSONS RETAIL PRODUCT C410				TUWHARETOA REGENT D145 DUNOON PRINCESS B187 GAR RETAIL PRODUCT LAWSONS PREDESTINED A543				

July 2022 Trans Tasman Angus Cattle Evaluation

	Calving Ease ✓			Growth and Maternal					
	DIR	DTRS	GL	BWT	200	400	600	MCW	MILK
EBVs	-1.4	-3.5	-5.9	4.2	47	84	102	66	23
Acc	62	53	85	74	66	66	66	67	62
	Fertility				Carcase				
	SS	DC	CWT	RIB	RUMP	EMA	RBV	IMF	
EBVs	1.8	-4.0	62	-0.9	-0.7	9.7	0.6	4.0	
Acc	63	42	62	64	61	60	60	60	
	GRN	323	DOM	229	ABI	182	GRS	216	

Top 10% of the breed for Eye Muscle Area (EMA) plus top 5% for Marbling (IMF). Note the very moderate MCW, this is important for maintenance costs and moderate sized cows tend to be more fertile and bounce back faster in tough years.



20 LAWSONS KI MOMENTUM R6191 AI

Birth Date:	6/9/20	AM:	AMFU	NH:	NHFU	CA:	CAFU	DD:	DDF
Society ID:	VLYR6191	ASA:	HBR	Johnes:	J-Bas 6	Mob:	RQLD 1	JBAS	J-Bas 6
Sire:	GAR PROGRESS GAR MOMENTUM GAR BIG EYE 1770				GAR PREDESTINED GAR OBJECTIVE 2345 ALC BIG EYE D09N EAGLEHAWK JEDDA Z48				
Dam:	GAR ANTICIPATION 7261 LAWSONS KI ANTICIPATION K6121 LAWSONS KI TANK B1155 H6171				MCC DAYBREAK GAR 5050 NEW DESIGN 0530 LAWSONS TANK B1155 LAWSONS SOLUTION C71				

July 2022 Trans Tasman Angus Cattle Evaluation

	Calving Ease ✓			Growth and Maternal					
	DIR	DTRS	GL	BWT	200	400	600	MCW	MILK
EBVs	2.1	1.0	-2.9	3.3	50	88	114	104	17
Acc	62	54	85	74	69	70	68	65	64
	Fertility				Carcase				
	SS	DC	CWT	RIB	RUMP	EMA	RBV	IMF	
EBVs	0.3	-0.7	65	-1.3	-2.7	13.6	1.6	3.8	
Acc	73	45	63	64	64	63	62	61	
	GRN	303	DOM	213	ABI	164	GRS	199	

Fantastic body shape, no wonder when you see Momentum and Anticipation upfront in the pedigree. #2 Eye Muscle Area (EMA) bull in the Sale at +13.6, top 1% of the breed plus top 5% for Marbling (IMF).



21 LAWSONS MONTALTO R262 AI

Birth Date:	26/7/20	AM:	AMFU	NH:	NHFU	CA:	CAFU	DD:	DDF
Society ID:	VLYR262	ASA:	HBR	Johnes:	J-Bas 6	Mob:	RQLD 1	JBAS	J-Bas 6
Sire:	TE MANIA BERKLEY B1 TE MANIA MONTALTO M1314 TE MANIA MITTAGONG H390				TE MANIA YORKSHIRE Y437 TE MANIA LOWAN Z53 TE MANIA BANJO B170 EAGLEHAWK JEDDA Z48				
Dam:	GAR MOMENTUM LAWSONS MOMENTUM P861 LAWSONS BARTEL E7 K1009				GAR PROGRESS GAR BIG EYE 1770 AYRVALE BARTEL E7 LAWSONS AFRICA H248				

July 2022 Trans Tasman Angus Cattle Evaluation

	Calving Ease ✓			Growth and Maternal					
	DIR	DTRS	GL	BWT	200	400	600	MCW	MILK
EBVs	5.7	4.8	2.3	2.5	45	86	104	69	23
Acc	58	49	85	74	68	69	67	63	59
	Fertility				Carcase				
	SS	DC	CWT	RIB	RUMP	EMA	RBV	IMF	
EBVs	4.0	-5.9	56	-0.9	-0.8	9.7	0.6	3.8	
Acc	72	42	59	61	61	60	59	58	
	GRN	318	DOM	237	ABI	197	GRS	226	

Moderate maturing type that is built to handle the tough going in Queensland and breed daughters that will last, the value of problem free, predictable cattle is often underestimated in an Industry that notoriously chases fads and extremes. This modest Montalto son sits in the top 10% of the breed for Eye Muscle Area (EMA) plus top 5% for Marbling (IMF).



22 LAWSONS KI ASHLAND R6226 AI

Birth Date: 19/8/20 AM: AMC NH: NH8% CA: CAFU DD: DDF
 Society ID: VLYR6226 ASA: HBR Johnes: J-Bas 6 Mob: RQLD 1 JBAS J-Bas 6
 Sire: GAR EARLY BIRD GAR DAYLIGHT
 GAR ASHLAND GAR PROGRESS 830
 CHAIR ROCK AMBUSH 1018 B/R AMBUSH 28
 EAGLEHAWK JEDDA Z48
 Dam: GAR PROPHET C R A BEXTOR 872 5205 608
 LAWSONS KI PROPHET M6500 GAR OBJECTIVE 1885
 LAWSONS KI EVIDENT H6049 DUNOON EVIDENT E614
 LAWSONS TOTAL E8425

July 2022 Trans Tasman Angus Cattle Evaluation

Calving Ease		Growth and Maternal								
DIR DTRS GL BWT		200	400	600	MCW	MILK				
EBVs	-2.9 3.4 -3.3 4.1	61	101	126	93	19				
Acc	60 48 85 74	69	69	68	64	60				
Fertility				Carcase						
SS DC CWT RIB RUMP				EMA	RBV	IMF				
EBVs	0.4 -4.0 65 -1.0 -1.1 8.3 1.1 3.1									
Acc	73 39 61 62 61 61 59 59									
GRN 370 DOM 267 ABI 216 GRS 251										

R6226 is a big volume, stout Ashland son with lots of horsepower in a moderate frame. Equal #5 Heavy Grain Index (GRN) bull in the Sale, top 2% of the breed.



23 LAWSONS KI PROPHET R6175 AI

Birth Date: 24/9/20 AM: AMFU NH: NHFU CA: CAFU DD: DDFU
 Society ID: VLYR6175 ASA: HBR Johnes: J-Bas 6 Mob: RQLD 1 JBAS J-Bas 6
 Sire: C R A BEXTOR 872 5205 608 BAR EXT TRAVELER 205
 GAR PROPHET CRA LADY JAYE 608 498 S EASY
 GAR OBJECTIVE 1885 SS OBJECTIVE T510 0T26
 EAGLEHAWK JEDDA Z48
 Dam: TUWHARETOA REGENT D145 TE MANIA AMBASSADOR A134
 LAWSONS KI REGENT K6457 LAWSONS HENRY VIII Y5
 ALPINE FAYRUZ F99 ARDROSSAN CASINO C18
 CUDGELL CREEK LUCY U11

July 2022 Trans Tasman Angus Cattle Evaluation

Calving Ease		Growth and Maternal								
DIR DTRS GL BWT		200	400	600	MCW	MILK				
EBVs	-2.8 -3.2 2.8 5.0	58	95	124	101	19				
Acc	62 58 84 74	69	69	67	66	63				
Fertility				Carcase						
SS DC CWT RIB RUMP				EMA	RBV	IMF				
EBVs	1.4 -6.6 71 -0.3 -1.4 6.1 -0.2 3.7									
Acc	72 53 63 65 64 63 64 62									
GRN 332 DOM 235 ABI 181 GRS 219										

The only Prophet son in the Sale, the old maestro sold over 130,000 straws of semen and is happily living out his retirement with his old mate Sunrise at Gardiner Angus Ranch. R6175 ranks in the top 10% of the breed for Eye Muscle Area (EMA) and for Marbling (IMF). Prophet has climbed the ranking to be one of the highest Heavy Grain Index sires in the Angus breed.



24 LAWSONS MOMENTOUS R259 AI

Birth Date: 2/8/20 AM: AMFU NH: NHFU CA: CAFU DD: DDFU
 Society ID: VLYR259 ASA: HBR Johnes: J-Bas 6 Mob: RQLD 1 JBAS J-Bas 6
 Sire: GAR MOMENTUM GAR PROGRESS
 LAWSONS MOMENTOUS M518 GAR BIG EYE 1770
 LAWSONS AFRICA H229 TE MANIA AFRICA A217
 EAGLEHAWK JEDDA Z48
 Dam: GAR PROPHET C R A BEXTOR 872 5205 608
 LAWSONS PROPHET P300 GAR OBJECTIVE 1885
 LAWSONS SURE FIRE M366 GAR SURE FIRE
 LAWSONS EVIDENT H252

July 2022 Trans Tasman Angus Cattle Evaluation

Calving Ease ✓		Growth and Maternal								
DIR DTRS GL BWT		200	400	600	MCW	MILK				
EBVs	4.6 0.1 -5.6 1.6	48	83	98	63	24				
Acc	62 53 85 73	68	69	67	64	61				
Fertility				Carcase						
SS DC CWT RIB RUMP				EMA	RBV	IMF				
EBVs	1.4 -5.1 54 0.1 0.2 9.5 -0.1 4.3									
Acc	72 43 61 63 62 61 60 59									
GRN 362 DOM 254 ABI 202 GRS 241										

S259 is an excellent calving ease specialist with carcass potential and moderate maturity pattern. Note the very moderate Mature Cow Weight (MCW). #9 Heavy Grain Index (GRN) bull in the Sale, top 2% of the breed plus top 10% for Eye Muscle Area (EMA) and top 5% for Marbling (IMF).



25 LAWSONS KI INDEX R6206 AI

Birth Date: 21/8/20 AM: AMFU NH: NHFU CA: CAFU DD: DDFU
 Society ID: VLYR6206 ASA: HBR Johnes: J-Bas 6 Mob: RQLD 1 JBAS J-Bas 6
 Sire: **VAR INDEX**
 GAR INGENUITY
 SANDPOINT BLACKBIRD 8809
 Dam: **LAWSONS KI AFRICA J6041**
 LAWSONS KI AFRICA J6041 M6145
 LAWSONS KI REGENT J6045

July 2022 Trans Tasman Angus Cattle Evaluation									
Calving Ease				Growth and Maternal					
	DIR	DTRS	GL	BWT	200	400	600	MCW	MILK
EBVs	-0.3	-0.3	-1.8	5.1	56	102	129	114	20
Acc	58	49	84	74	68	64	65	63	60
Fertility			Carcase						
	SS	DC	CWT	RIB	RUMP	EMA	RBV	IMF	
EBVs	1.9	-4.1	74	-1.8	-2.7	11.1	2.4	2.4	
Acc	69	41	60	61	58	58	58	58	
	GRN	295	DOM	223	ABI	190	GRS	206	



Attractive phenotype and handling ability, R6206 ranks in the top 5% of the breed for Eye Muscle Area (EMA).

26 LAWSONS MOMENTUM R148 AI

Birth Date: 19/8/20 AM: AMFU NH: NHFU CA: CAFU DD: DDFU
 Society ID: VLYR148 ASA: APR Johnes: J-Bas 6 Mob: RQLD 1 JBAS J-Bas 6
 Sire: **GAR MOMENTUM**
 GAR PROGRESS
 GAR BIG EYE 1770
 Dam: **LAWSONS KODAK P1446**
 RENNYLEA KODAK K522
 LAWSONS INCREDIBLE L1059

July 2022 Trans Tasman Angus Cattle Evaluation									
Calving Ease ✓				Growth and Maternal					
	DIR	DTRS	GL	BWT	200	400	600	MCW	MILK
EBVs	2.5	2.4	-1.9	4.0	52	92	114	92	18
Acc	62	54	85	74	69	70	72	68	63
Fertility			Carcase						
	SS	DC	CWT	RIB	RUMP	EMA	RBV	IMF	
EBVs	1.5	-2.3	68	-0.7	-1.7	10.8	0.7	4.1	
Acc	71	46	63	64	63	62	62	61	
	GRN	325	DOM	229	ABI	182	GRS	215	



The next two Lots are both Momentum x Kodak sons with similar genetic potential. These moderate framed Momentum sons will be at the top of any value-based marketing grid that includes quality and yield. R148 ranks in the top 10% of the breed for Heavy Grain Index (GRN) and top 5% for Eye Muscle Area (EMA) and Marbling (IMF).

27 LAWSONS MOMENTUM R152 AI

Birth Date: 9/9/20 AM: AMFU NH: NHFU CA: CAFU DD: DD1%
 Society ID: VLYR152 ASA: HBR Johnes: J-Bas 6 Mob: RQLD 1 JBAS J-Bas 6
 Sire: **GAR MOMENTUM**
 GAR PROGRESS
 GAR BIG EYE 1770
 Dam: **LAWSONS KODAK P1437**
 RENNYLEA KODAK K522
 LAWSONS NOVAK J655

July 2022 Trans Tasman Angus Cattle Evaluation									
Calving Ease ✓				Growth and Maternal					
	DIR	DTRS	GL	BWT	200	400	600	MCW	MILK
EBVs	1.0	2.1	-1.8	3.5	50	84	107	94	16
Acc	63	55	85	74	69	69	68	65	63
Fertility			Carcase						
	SS	DC	CWT	RIB	RUMP	EMA	RBV	IMF	
EBVs	1.1	-2.2	60	0.1	-0.8	7.3	-0.5	4.5	
Acc	73	46	63	64	64	63	63	62	
	GRN	304	DOM	205	ABI	153	GRS	190	



R152 is the equal #2 Sale bull for Marbling (IMF) at +4.5, both top 2% of the breed for these important drivers of meat quality (MSA) and yield.

28 LAWSONS ASHLAND R311 AI

Birth Date: 23/5/20 AM: AMF NH: NHFU CA: CAFU DD: DDFU
 Society ID: VLYR311 ASA: HBR Johnes: J-Bas 6 Mob: RQLD 2 JBAS J-Bas 6
 Sire: GAR EARLY BIRD GAR DAYLIGHT GAR PROGRESS 830 B/R AMBUSH 28 EAGLEHAWK JEDDA Z48
 GAR ASHLAND CHAIR ROCK AMBUSH 1018
 Dam: GAR PROPHET C R A BEXTOR 872 5205 608 GAR OBJECTIVE 1885 B/R AMBUSH 28 LAWSONS SOLUTION C1069
 LAWSONS PROPHEP P779 LAWSONS AMBUSH E964

July 2022 Trans Tasman Angus Cattle Evaluation									
Calving Ease ✓					Growth and Maternal				
	DIR	DTRS	GL	BWT	200	400	600	MCW	MILK
EBVs	4.1	7.6	-10.1	3.5	64	112	138	103	19
Acc	60	49	85	68	68	70	67	66	61
Fertility				Carcase					
	SS	DC	CWT	RIB	RUMP	EMA	RBY	IMF	
EBVs	0.9	-4.7	77	-1.1	-1.3	8.2	0.9	3.7	
Acc	63	40	61	63	60	62	61	60	
	GRN	407	DOM	296	ABI	244	GRS	281	



Start of a new management group. R311 possesses the capacity and thickness that you would normally associate with a Euro breed and he would blow them out of the water with his growth potential and marbling. R311 is the highest Heavy Grain Index (GRN) bull in the Sale at an incredible \$407 GRN compared with a breed average of \$255, top 1% of the breed plus top 11% for 600D Growth and equal #8 ranked in the Sale for 600D Growth. Please note R311 injured his near side eye and has limited vision in that eye. We do not feel this limits his calf-getting ability and we are happy to guarantee his fertility an ability for natural service.

29 LAWSONS KI RELIANT R6068 AI

Birth Date: 9/8/20 AM: AMC NH: NH4% CA: CAFU DD: DDF
 Society ID: VLYR6068 ASA: HBR Johnes: J-Bas 6 Mob: RQLD 2 JBAS J-Bas 6
 Sire: GAR SURE FIRE CONNEALY IN SURE 8524 CHAIR ROCK 5050 GAR 8086 B/R DESTINATION 727-928 EAGLEHAWK JEDDA Z48
 GAR RELIANT GAR DESTINATION N244
 Dam: RENNYLEA KODAK K522 RENNYLEA EDMUND E11 RENNYLEA EISA ERICA F810 GAR PROPHET LAWSONS KI KODAK P6369 LAWSONS KI PROPHEP M6500 LAWSONS KI EVIDENT H6049

July 2022 Trans Tasman Angus Cattle Evaluation									
Calving Ease ✓					Growth and Maternal				
	DIR	DTRS	GL	BWT	200	400	600	MCW	MILK
EBVs	5.8	5.0	-5.0	2.4	55	97	116	90	20
Acc	56	45	85	74	68	68	66	63	57
Fertility				Carcase					
	SS	DC	CWT	RIB	RUMP	EMA	RBY	IMF	
EBVs	2.2	-4.6	70	-0.6	-1.8	7.2	1.4	3.3	
Acc	72	39	59	61	60	59	59	57	
	GRN	360	DOM	263	ABI	220	GRS	248	



One of only two Reliant sons in the Sale. Reliant is one of the leading sires for Net Feed Intake (NFI), top 1% of the breed, a key measure of feed efficiency and strongly related to maintenance efficiency in the cow herd. Reliant progeny are also some of the quietest disposition cattle we have ever handled. R6068 is the #10 Heavy Grain Index (GRN) bull in the Sale, top 3% of the breed.

30 LAWSONS MONTALTO R141 AI

Birth Date: 23/8/20 AM: AMFU NH: NHFU CA: CAFU DD: DDFU
 Society ID: VLYR141 ASA: HBR Johnes: J-Bas 6 Mob: RQLD 2 JBAS J-Bas 6
 Sire: TE MANIA BERKLEY B1 TE MANIA YORKSHIRE Y437 TE MANIA LOWAN Z53 TE MANIA BANJO B170 EAGLEHAWK JEDDA Z48
 TE MANIA MONTALTO M1314 TE MANIA MITTAGONG H390
 Dam: LAWSONS MOMENTOUS M518 GAR MOMENTUM LAWSONS AFRICA H229 GAR PROPHET LAWSONS MONTALTO P1584 LAWSONS PROPHEP M558 LAWSONS ANTICIPATION K578

July 2022 Trans Tasman Angus Cattle Evaluation									
Calving Ease ✓					Growth and Maternal				
	DIR	DTRS	GL	BWT	200	400	600	MCW	MILK
EBVs	3.0	2.3	0.0	4.4	53	97	120	93	23
Acc	58	49	85	73	67	64	64	62	58
Fertility				Carcase					
	SS	DC	CWT	RIB	RUMP	EMA	RBY	IMF	
EBVs	3.7	-6.5	64	-1.1	-1.5	10.3	0.9	3.8	
Acc	60	40	58	60	58	57	58	57	
	GRN	336	DOM	247	ABI	204	GRS	235	



Exceptionally quiet disposition, R141 does have a bit of white around his pizzle. Top 10% of the breed for Heavy Grain Index (GRN) and Eye Muscle Area (EMA).

31 LAWSONS ASHLAND R5065 AI

Birth Date: 11/8/20 AM: AMFU NH: NHFU CA: CAFU DD: DD7%

Society ID: VLYR5065 ASA: HBR Johnes: J-Bas 6 Mob: RQLD 2 JBAS J-Bas 6

Sire: **GAR ASHLAND**
GAR EARLY BIRD
CHAIR ROCK AMBUSH 1018

Dam: **LAWSONS KODAK P1623**
RENNYLEA KODAK K522
LAWSONS EVIDENT H319

GAR DAYLIGHT
GAR PROGRESS 830
B/R AMBUSH 28
EAGLEHAWK JEDDA Z48

RENNYLEA EDMUND E11
RENNYLEA EISA ERICA F810
DUNOON EVIDENT E614
LAWSONS EQUATOR D618

July 2022 Trans Tasman Angus Cattle Evaluation									
Calving Ease				Growth and Maternal					
	DIR	DTRS	GL	BWT	200	400	600	MCW	MILK
EBVs	2.2	5.6	-6.6	3.2	61	105	141	117	12
Acc	61	51	85	74	73	72	74	71	66
Fertility				Carcase					
	SS	DC	CWT	RIB	RUMP	EMA	RBV	IMF	
EBVs	0.7	-2.5	71	0.1	0.5	7.1	0.1	3.3	
Acc	73	40	68	70	66	66	67	66	
	GRN	357	DOM	259	ABI	200	GRS	247	

Easy fleshing, exceptional capacity and growth in this stout looking Ashland son, he ranks in the top 5% of the breed for Heavy Grain Index (GRN) and top 7% 600D Growth, the #4 bull in the Sale for 600D Growth so some serious horsepower here!



32 LAWSONS KI ASHLAND R6105 AI

Birth Date: 18/8/20 AM: AMFU NH: NHFU CA: CAFU DD: DDFU

Society ID: VLYR6105 ASA: APR Johnes: J-Bas 6 Mob: RQLD 2 JBAS J-Bas 6

Sire: **GAR ASHLAND**
GAR EARLY BIRD
CHAIR ROCK AMBUSH 1018

Dam: **LAWSONS BARTEL E7 H828**
AYRVALE BARTEL E7
LAWSONS DINKY DI E325

GAR DAYLIGHT
GAR PROGRESS 830
B/R AMBUSH 28
EAGLEHAWK JEDDA Z48

TE MANIA BARTEL B219
EAGLEHAWK JEDDA B32
LAWSONS DINKY-DI Z191
LAWSONS B1708

July 2022 Trans Tasman Angus Cattle Evaluation									
Calving Ease				Growth and Maternal					
	DIR	DTRS	GL	BWT	200	400	600	MCW	MILK
EBVs	0.6	5.8	-2.5	4.8	62	106	139	107	19
Acc	61	52	85	74	69	69	69	67	63
Fertility				Carcase					
	SS	DC	CWT	RIB	RUMP	EMA	RBV	IMF	
EBVs	2.2	-4.0	79	-2.9	-2.6	9.4	2.0	2.6	
Acc	66	42	65	67	64	64	64	63	
	GRN	347	DOM	261	ABI	214	GRS	246	

Top 5% of the breed for Heavy Grain Index (GRN) and top 10% for 600D Growth, the #6 bull in the Sale for 600D Growth so some serious horsepower here! Ashland will add some growth but it's in the right sensible package that won't blow out cow size.



33 LAWSONS MOMENTOUS R104 AI

Birth Date: 19/6/20 AM: AMFU NH: NHFU CA: CAFU DD: DD5%

Society ID: VLYR104 ASA: HBR Johnes: J-Bas 6 Mob: RQLD 1 JBAS J-Bas 6

Sire: **LAWSONS MOMENTOUS M518**
GAR MOMENTUM
LAWSONS AFRICA H229

Dam: **LAWSONS GOODTHING K529**
DUNOON GOODTHING G167
LAWSONS TANK D779

GAR PROGRESS
GAR BIG EYE 1770
TE MANIA AFRICA A217
EAGLEHAWK JEDDA Z48

TUWHARETOA REGENT D145
DUNOON PRINCESS B187
LAWSONS TANK X1235
LAWSONS NEW DESIGN 1407 Z815

July 2022 Trans Tasman Angus Cattle Evaluation									
Calving Ease				Growth and Maternal					
	DIR	DTRS	GL	BWT	200	400	600	MCW	MILK
EBVs	3.7	-2.8	-4.7	3.3	45	80	108	93	22
Acc	62	53	85	75	70	71	73	69	64
Fertility				Carcase					
	SS	DC	CWT	RIB	RUMP	EMA	RBV	IMF	
EBVs	1.6	-3.3	61	-0.4	-0.6	8.3	-0.6	4.7	
Acc	72	42	63	63	62	61	60	60	
	GRN	295	DOM	200	ABI	142	GRS	188	

Another exceptionally quiet natured Momentous son with unmatched carcase potential. R104 is the highest marbling (IMF) bull in the Sale at +4.7, top 1% of the breed.



34 LAWSONS MONTALTO R210 AI

Birth Date: 18/7/20 AM: AMFU NH: NHFU CA: CAFU DD: DDFU
 Society ID: VLYR210 ASA: HBR Johnes: J-Bas 6 Mob: RQLD 2 JBAS J-Bas 6
 Sire: TE MANIA BERKLEY B1 TE MANIA YORKSHIRE Y437
 TE MANIA LOWAN Z53
 TE MANIA BANJO B170
 EAGLEHAWK JEDDA Z48
 Dam: LAWSONS MOMENTUM P341 GAR MOMENTUM
 LAWSONS PROPHET M773 GAR BIG EYE 1770
 LAWSONS BARTEL E7 K684

July 2022 Trans Tasman Angus Cattle Evaluation									
Calving Ease ✓					Growth and Maternal				
	DIR	DTRS	GL	BWT	200	400	600	MCW	MILK
EBVs	7.7	5.8	-3.9	2.2	46	84	102	72	21
Acc	57	49	85	73	68	69	66	64	58
Fertility				Carcase					
	SS	DC	CWT	RIB	RUMP	EMA	RBV	IMF	
EBVs	2.9	-6.0	55	-0.2	-0.4	9.4	0.4	3.9	
Acc	60	42	58	60	58	57	58	57	
	GRN	335	DOM	245	ABI	201	GRS	234	

Great outcross option that has both eye appeal and exceptional carcass traits and calving ease. R210 ranks in the top 10% of the breed for Heavy Grain Index (GRN) plus top 5% for Marbling (IMF).



35 LAWSONS MOMENTUM R154 AI

Birth Date: 20/8/20 AM: AMFU NH: NHFU CA: CAFU DD: DD5%
 Society ID: VLYR154 ASA: APR Johnes: J-Bas 6 Mob: RQLD 2 JBAS J-Bas 6
 Sire: GAR PROGRESS GAR PREDESTINED
 GAR MOMENTUM GAR OBJECTIVE 2345
 GAR BIG EYE 1770 ALC BIG EYE D09N
 EAGLEHAWK JEDDA Z48
 Dam: LAWSONS JUDD P1540 PARINGA JUDD J5
 LAWSONS SUNRISE M29 GAR SUNRISE
 LAWSONS EVIDENT J826

July 2022 Trans Tasman Angus Cattle Evaluation									
Calving Ease ✓					Growth and Maternal				
	DIR	DTRS	GL	BWT	200	400	600	MCW	MILK
EBVs	-0.1	-2.1	0.8	4.1	53	99	121	90	21
Acc	62	54	85	74	69	70	67	66	63
Fertility				Carcase					
	SS	DC	CWT	RIB	RUMP	EMA	RBV	IMF	
EBVs	1.0	-1.4	73	-1.3	-1.4	10.4	0.8	4.0	
Acc	62	45	62	63	61	60	61	61	
	GRN	334	DOM	234	ABI	188	GRS	221	

Top 10% of the breed for Heavy Grain Index (GRN) and Eye Muscle Area (EMA) plus top 5% for Marbling (IMF).



36 LAWSONS ASHLAND R245 AI

Birth Date: 13/7/20 AM: AM3% NH: NHFU CA: CAFU DD: DDFU
 Society ID: VLYR245 ASA: HBR Johnes: J-Bas 6 Mob: RQLD 2 JBAS J-Bas 6
 Sire: GAR EARLY BIRD GAR DAYLIGHT
 GAR ASHLAND GAR PROGRESS 830
 CHAIR ROCK AMBUSH 1018 B/R AMBUSH 28
 EAGLEHAWK JEDDA Z48
 Dam: LAWSONS KODAK P1250 RENNYLEA KODAK K522
 LAWSONS NOVAK H989 RENNYLEA EDMUND E11
 RENNYLEA EISA ERICA F810
 LAWSONS NOVAK E313
 LAWSONS SOLUTION F775

July 2022 Trans Tasman Angus Cattle Evaluation									
Calving Ease ✓					Growth and Maternal				
	DIR	DTRS	GL	BWT	200	400	600	MCW	MILK
EBVs	5.6	7.8	-5.5	2.0	56	101	129	107	18
Acc	59	47	85	74	69	70	67	63	59
Fertility				Carcase					
	SS	DC	CWT	RIB	RUMP	EMA	RBV	IMF	
EBVs	1.8	-2.8	71	-1.0	-2.2	8.9	1.4	3.1	
Acc	73	37	61	62	61	62	59	59	
	GRN	340	DOM	249	ABI	204	GRS	236	

Huge birth to growth spread and still moderate MCW and lots of carcass. R245 ranks in the top 10% of the breed for Heavy Grain Index (GRN).



37 LAWSONS GENUINE R267 AI

Birth Date: 5/8/20 AM: AMFU NH: NHFU CA: CAFU DD: DD26%
 Society ID: VLYR267 ASA: HBR Johnes: J-Bas 6 Mob: RQLD 2 JBAS J-Bas 6
 Sire: **GAR GENUINE** K C F BENNETT ABSOLUTE S A V FINAL ANSWER 0035
 GAR DAYBREAK 342 THOMAS MISS LUCY 5152
 PARINGA JUDD J5 MCC DAYBREAK
 LAWSONS DINKY-DI G1149 EAGLEHAWK JEDDA Z48
 TUWHARETOA REGENT D145
 STRATHEWEN BERKLEY WILPENA F30
 LAWSONS DINKY-DI Z191
 LAWSONS TANK A1048

July 2022 Trans Tasman Angus Cattle Evaluation

Calving Ease		Growth and Maternal								
		DIR	DTRS	GL	BWT	200	400	600	MCW	MILK
EBVs	11.0	5.9	-9.7	0.5	49	88	114	94	18	
Acc	55	45	85	74	69	69	67	62	57	
Fertility		Carcase								
		SS	DC	CWT	RIB	RUMP	EMA	RBV	IMF	
EBVs	1.7	-5.3	70	0.3	-1.4	8.0	1.3	2.7		
Acc	59	38	59	60	57	57	58	57		
GRN		315	DOM	238	ABI	194	GRS	224		

#1 ranked Calving Ease Direct (DIR) bull in the Sale at +11.0, top 1% of the breed. Super quiet disposition, balanced growth curve and a deep bodied Genuine son.



38 LAWSONS MOMENTUM R166 AI

Birth Date: 18/8/20 AM: AMFU NH: NHFU CA: CAFU DD: DD1%
 Society ID: VLYR166 ASA: HBR Johnes: J-Bas 6 Mob: RQLD 2 JBAS J-Bas 6
 Sire: **GAR MOMENTUM** GAR PROGRESS GAR PREDESTINED
 GAR BIG EYE 1770 GAR OBJECTIVE 2345
 AYRVALE BARTEL E7 ALC BIG EYE D09N
 LAWSONS BARTEL E7 P1447 EAGLEHAWK JEDDA Z48
 LAWSONS TOTAL D1160 TC TOTAL 410
 LAWSONS YIELD GRADE A509

July 2022 Trans Tasman Angus Cattle Evaluation

Calving Ease		Growth and Maternal								
		DIR	DTRS	GL	BWT	200	400	600	MCW	MILK
EBVs	1.4	3.7	-1.6	3.6	52	92	114	98	19	
Acc	62	57	85	74	69	70	68	67	64	
Fertility		Carcase								
		SS	DC	CWT	RIB	RUMP	EMA	RBV	IMF	
EBVs	1.5	-2.9	69	-1.3	-1.6	9.9	0.7	3.9		
Acc	63	48	63	64	62	62	63	62		
GRN		314	DOM	221	ABI	178	GRS	207		

Combines two of the all time great Angus sires in Momentum and Bartel E7, it's not surprising R166 has a touch of arrogance, he just knows he has the statistics to back up his looks - top 10% of the breed for Eye Muscle Area (EMA) plus top 5% for Marbling (IMF).



39 LAWSONS GENUINE R188 AI

Birth Date: 10/8/20 AM: AMC NH: NHFU CA: CAFU DD: DD4%
 Society ID: VLYR188 ASA: HBR Johnes: J-Bas 6 Mob: RQLD 2 JBAS J-Bas 6
 Sire: **GAR GENUINE** K C F BENNETT ABSOLUTE S A V FINAL ANSWER 0035
 GAR DAYBREAK 342 THOMAS MISS LUCY 5152
 LAWSONS MOMENTOUS M518 MCC DAYBREAK
 LAWSONS MOMENTOUS P1477 GAR MOMENTUM
 LAWSONS SOLUTION D806 LAWSONS AFRICA H229
 LAWSONS NEW DESIGN 1407 Z1310

July 2022 Trans Tasman Angus Cattle Evaluation

Calving Ease		Growth and Maternal								
		DIR	DTRS	GL	BWT	200	400	600	MCW	MILK
EBVs	5.9	0.1	-7.3	2.4	54	98	130	108	20	
Acc	56	44	85	74	69	69	67	62	56	
Fertility		Carcase								
		SS	DC	CWT	RIB	RUMP	EMA	RBV	IMF	
EBVs	3.0	-4.1	70	-0.6	-2.0	7.8	1.3	3.1		
Acc	72	36	59	60	60	60	57	57		
GRN		325	DOM	239	ABI	190	GRS	228		

Long bodied with an incredible spread from birth to 600D growth and still very moderate on MCW. Top 10% of the breed for Heavy Grain Index (GRN).



40 LAWSONS ASHLAND R221 AI

Birth Date: 11/8/20 AM: AM3% NH: NHFU CA: CAFU DD: DDF
 Society ID: VLYR221 ASA: HBR Johnes: J-Bas6 Mob: RQLD 2 JBAS J-Bas6
 Sire: GAR EARLY BIRD GAR DAYLIGHT GAR PROGRESS 830 B/R AMBUSH 28 EAGLEHAWK JEDDA Z48
 GAR ASHLAND GAR IN SURE 1524 GAR BIG EYE 1770 GAR SOLUTION GAR PREDESTINED N605
 Dam: LAWSONS MOMENTUM P739 LAWSONS GAR SOLUTION D1057

July 2022 Trans Tasman Angus Cattle Evaluation									
Calving Ease ✓					Growth and Maternal				
	DIR	DTRS	GL	BWT	200	400	600	MCW	MILK
EBVs	4.0	5.4	-6.0	1.8	47	86	107	76	18
Acc	61	49	85	75	70	70	69	66	61
Fertility				Carcase					
	SS	DC	CWT	RIB	RUMP	EMA	RBY	IMF	
EBVs	-0.1	-1.6	58	-1.0	-1.1	9.1	0.9	3.5	
Acc	74	38	62	63	62	62	61	61	
	GRN	327	DOM	236	ABI	189	GRS	222	



If you look back through the pedigree on these bulls many are now over 10 generations of AI, no other Angus stud has the consistency or control our 100% AI/ET PLANNED BREEDING PROGRAM provides. R221 is actually 10 generations of 100% Gardiner Angus Ranch (GAR) genetics; we have been working with GAR for nearly 30 years and the power of our partnership and the longevity of staying disciplined keeps us ten years in front of the Angus breed. R221 ranks in the top 10% of the breed for Eye Muscle Area (EMA) and for Marbling (IMF).

41 LAWSONS MONTALTO R187 AI

Birth Date: 14/7/20 AM: AMFU NH: NHFU CA: CAFU DD: DDFU
 Society ID: VLYR187 ASA: HBR Johnes: J-Bas6 Mob: RQLD 2 JBAS J-Bas6
 Sire: TE MANIA BERKLEY B1 TE MANIA YORKSHIRE Y437 TE MANIA LOWAN Z53 TE MANIA BANJO B170 EAGLEHAWK JEDDA Z48
 TE MANIA MITTAGONG H390
 GAR PROPHECY GAR PROPHET GAR 28 AMBUSH 181 AYRVALE BARTEL E7 LAWSONS PREDESTINED C1037
 Dam: LAWSONS PROPHECY P968 LAWSONS BARTEL ET M81

July 2022 Trans Tasman Angus Cattle Evaluation									
Calving Ease ✓					Growth and Maternal				
	DIR	DTRS	GL	BWT	200	400	600	MCW	MILK
EBVs	8.0	7.1	-4.6	2.8	52	93	117	89	21
Acc	56	48	85	73	68	69	66	62	58
Fertility				Carcase					
	SS	DC	CWT	RIB	RUMP	EMA	RBY	IMF	
EBVs	3.4	-7.8	63	-0.4	-0.4	8.1	0.3	3.5	
Acc	60	41	58	60	58	57	58	57	
	GRN	342	DOM	256	ABI	211	GRS	244	



R187 ranks in the top 5% of the breed for Heavy Grain Index (GRN) and #10 ranked Calving Ease Direct bull (DIR) in the Sale at +8.1, top 10% of the breed for DIR and Marbling (IMF).

42 LAWSONS QUANTUM R237 AI

Birth Date: 2/8/20 AM: AMFU NH: NHFU CA: CAFU DD: DD12%
 Society ID: VLYR237 ASA: HBR Johnes: J-Bas6 Mob: RQLD 2 JBAS J-Bas6
 Sire: GAR MOMENTUM GAR PROGRESS GAR BIG EYE 1770 CONNEALY IN SURE 8524 EAGLEHAWK JEDDA Z48
 GAR QUANTUM GAR IN SURE 1524 GAR PROPHECY GAR 28 AMBUSH 181 PARINGA JUDD J5 LAWSONS PROGRESS G614
 Dam: LAWSONS PROPHECY P279 LAWSONS JUDD M921

July 2022 Trans Tasman Angus Cattle Evaluation									
Calving Ease ✓					Growth and Maternal				
	DIR	DTRS	GL	BWT	200	400	600	MCW	MILK
EBVs	6.3	3.1	-6.7	2.6	54	93	116	86	21
Acc	55	46	85	74	68	69	66	61	57
Fertility				Carcase					
	SS	DC	CWT	RIB	RUMP	EMA	RBY	IMF	
EBVs	2.1	-4.2	71	-0.1	-0.8	11.2	1.0	3.6	
Acc	72	37	59	60	60	60	58	57	
	GRN	358	DOM	261	ABI	210	GRS	248	



This nuggety Quantum son excels across the board. R237 ranks in the top 5% of the breed for Heavy Grain Index (GRN) and Eye Muscle Area (EMA) plus top 10% for Marbling (IMF).

43 LAWSONS QUANTUM R193 AI

Birth Date: 11/8/20 **AM:** AMFU **NH:** NHFU **CA:** CAFU **DD:** DD5%
Society ID: VLYR193 **ASA:** HBR **Johnes:** J-Bas 6 **Mob:** RQLD 2 **JBAS:** J-Bas 6
Sire: GAR QUANTUM
 GAR MOMENTUM
 GAR IN SURE 1524
Dam: LAWSONS GET CRACKING P1628
 ALLOURA GET CRACKING G10
 LAWSONS BARTEL E7 J690
 GAR PROGRESS
 GAR BIG EYE 1770
 CONNEALY IN SURE 8524
 EAGLEHAWK JEDDA Z48
 TE MANIA BERKLEY B1
 ALLOURA JEDDA Z15
 AYRVALE BARTEL E7
 LAWSONS PREDESTINED D683

July 2022 Trans Tasman Angus Cattle Evaluation

Calving Ease		Growth and Maternal								
		DIR	DTRS	GL	BWT	200	400	600	MCW	MILK
EBVs	6.3	4.3	-3.9	3.2	52	91	111	86	21	
Acc	55	46	85	74	68	69	67	64	57	
Fertility		Carcase								
		SS	DC	CWT	RIB	RUMP	EMA	RBV	IMF	
EBVs	2.9	-6.9	69	0.8	0.8	12.3	0.3	3.8		
Acc	71	38	60	60	60	60	57	57		
		GRN	354	DOM	261	ABI	214	GRS	249	

Super disposition and an ideal growth curve with breed leading carcase potential! R163 ranks in the top 5% of the breed for Heavy Grain Index (GRN) and Marbling (IMF). Equal #6 Eye Muscle Area (EMA) bull in the Sale at +12.3, top 2% of the breed.



44 LAWSONS GENUINE R203 AI

Birth Date: 8/8/20 **AM:** AMFU **NH:** NHFU **CA:** CAFU **DD:** DD5%
Society ID: VLYR203 **ASA:** HBR **Johnes:** J-Bas 6 **Mob:** RQLD 2 **JBAS:** J-Bas 6
Sire: GAR GENUINE
 K C F BENNETT ABSOLUTE
 GAR DAYBREAK 342
Dam: LAWSONS BARTEL E7 P1458
 AYRVALE BARTEL E7
 LAWSONS ADMIRAL G730
 S A V FINAL ANSWER 0035
 THOMAS MISS LUCY 5152
 MCC DAYBREAK
 EAGLEHAWK JEDDA Z48
 TE MANIA BARTEL B219
 EAGLEHAWK JEDDA B32
 ARDROSSAN ADMIRAL A2
 LAWSONS ROMEO C232

July 2022 Trans Tasman Angus Cattle Evaluation

Calving Ease		Growth and Maternal								
		DIR	DTRS	GL	BWT	200	400	600	MCW	MILK
EBVs	8.2	4.3	-8.9	2.1	52	93	119	93	20	
Acc	52	45	85	66	67	69	66	62	57	
Fertility		Carcase								
		SS	DC	CWT	RIB	RUMP	EMA	RBV	IMF	
EBVs	1.4	-6.3	70	0.1	-1.4	6.6	1.1	2.4		
Acc	72	40	59	61	61	60	58	57		
		GRN	324	DOM	247	ABI	205	GRS	232	

#9 ranked Calving Ease Direct bull (DIR) in the Sale at +8.2, top 8% of the breed plus top 10% for Heavy Grain Index (GRN).



45 LAWSONS GENUINE R178 AI

Birth Date: 29/8/20 **AM:** AMFU **NH:** NH1% **CA:** CAFU **DD:** DD1%
Society ID: VLYR178 **ASA:** HBR **Johnes:** J-Bas 6 **Mob:** RQLD 2 **JBAS:** J-Bas 6
Sire: GAR GENUINE
 K C F BENNETT ABSOLUTE
 GAR DAYBREAK 342
Dam: LAWSONS MOMENTOUS P1506
 LAWSONS MOMENTOUS M518
 LAWSONS EDMUND E11 H716
 S A V FINAL ANSWER 0035
 THOMAS MISS LUCY 5152
 MCC DAYBREAK
 EAGLEHAWK JEDDA Z48
 GAR MOMENTUM
 LAWSONS AFRICA H229
 RENNYLEA EDMUND E11
 LAWSONS RIGHT DIRECTION D427

July 2022 Trans Tasman Angus Cattle Evaluation

Calving Ease		Growth and Maternal								
		DIR	DTRS	GL	BWT	200	400	600	MCW	MILK
EBVs	6.1	1.3	-9.7	3.1	55	101	132	108	20	
Acc	55	44	85	74	69	69	68	63	56	
Fertility		Carcase								
		SS	DC	CWT	RIB	RUMP	EMA	RBV	IMF	
EBVs	3.2	-4.7	73	-0.5	-2.1	8.7	1.6	3.1		
Acc	72	36	60	60	60	60	57	57		
		GRN	330	DOM	247	ABI	201	GRS	235	

R178's genetic predictions are exceptional, look at his birth to growth numbers and still moderate MCW. Similar pedigree and genetic profile to the next Lot. Top 10% of the breed for Heavy Grain Index (GRN).



46 LAWSONS GENUINE R181 AI

Birth Date: 29/8/20 AM: AMFU NH: NHFU CA: CAFU DD: DDFU
 Society ID: VLYR181 ASA: HBR Johnes: J-Bas 6 Mob: RQLD 2 JBAS J-Bas 6
 Sire: GAR GENUINE
 K C F BENNETT ABSOLUTE
 GAR DAYBREAK 342
 S A V FINAL ANSWER 0035
 THOMAS MISS LUCY 5152
 MCC DAYBREAK
 EAGLEHAWK JEDDA Z48
 GAR MOMENTUM
 LAWSONS AFRICA H229
 GAR SUNRISE
 LAWSONS TRUST H553
 Dam: LAWSONS MOMENTOUS P1576
 LAWSONS SUNRISE M378

July 2022 Trans Tasman Angus Cattle Evaluation									
Calving Ease ✓					Growth and Maternal				
	DIR	DTRS	GL	BWT	200	400	600	MCW	MILK
EBVs	7.4	2.6	-10.5	1.9	56	99	126	100	20
Acc	55	43	85	74	69	69	67	63	56
Fertility			Carcase						
	SS	DC	CWT	RIB	RUMP	EMA	RBV	IMF	
EBVs	1.3	-3.5	71	-0.5	-2.3	10.4	1.8	2.9	
Acc	72	36	59	60	60	60	57	57	
	GRN	351	DOM	259	ABI	212	GRS	245	

Similar pedigree and performance to the previous Lot with Genuine x Momentous. Top 5% of the breed for Heavy Grain Index (GRN) and top 10% for Eye Muscle Area (EMA).



47 LAWSONS MONTALTO R150 AI

Birth Date: 4/9/20 AM: AMC NH: NHFU CA: CAFU DD: DDF
 Society ID: VLYR150 ASA: APR Johnes: J-Bas 6 Mob: RQLD 2 JBAS J-Bas 6
 Sire: TE MANIA MONTALTO M1314
 TE MANIA BERKLEY B1
 TE MANIA MITTAGONG H390
 TE MANIA YORKSHIRE Y437
 TE MANIA LOWAN Z53
 TE MANIA BANJO B170
 EAGLEHAWK JEDDA Z48
 GAR MOMENTUM
 LAWSONS AFRICA H229
 LAWSONS TANK B1155
 LAWSONS HENRY VIII F8414
 Dam: LAWSONS MOMENTOUS P1511
 LAWSONS TANK B1155 H982

July 2022 Trans Tasman Angus Cattle Evaluation									
Calving Ease ✓					Growth and Maternal				
	DIR	DTRS	GL	BWT	200	400	600	MCW	MILK
EBVs	5.6	2.4	-5.5	3.1	47	87	109	86	21
Acc	58	49	85	74	68	69	66	63	58
Fertility			Carcase						
	SS	DC	CWT	RIB	RUMP	EMA	RBV	IMF	
EBVs	2.6	-6.1	59	-0.1	-0.3	9.8	0.1	3.7	
Acc	72	41	59	61	60	59	58	57	
	GRN	310	DOM	228	ABI	185	GRS	216	

Top 10% of the breed for Eye Muscle Area (EMA) and for Marbling (IMF).



48 LAWSONS ASHLAND R180 AI

Birth Date: 13/8/20 AM: AMFU NH: NHFU CA: CAFU DD: DDC
 Society ID: VLYR180 ASA: HBR Johnes: J-Bas 6 Mob: RQLD 2 JBAS J-Bas 6
 Sire: GAR ASHLAND
 GAR EARLY BIRD
 CHAIR ROCK AMBUSH 1018
 GAR DAYLIGHT
 GAR PROGRESS 830
 B/R AMBUSH 28
 EAGLEHAWK JEDDA Z48
 RENNYLEA EDMUND E11
 RENNYLEA EISA ERICA F810
 GAR MOMENTUM
 LAWSONS AFRICA H225
 Dam: LAWSONS KODAK P1570
 LAWSONS MOMENTUM M370

July 2022 Trans Tasman Angus Cattle Evaluation									
Calving Ease ✓					Growth and Maternal				
	DIR	DTRS	GL	BWT	200	400	600	MCW	MILK
EBVs	5.5	7.6	-5.1	1.7	52	91	113	80	17
Acc	60	47	85	74	69	70	68	65	59
Fertility			Carcase						
	SS	DC	CWT	RIB	RUMP	EMA	RBV	IMF	
EBVs	2.1	-3.0	60	-0.6	-1.3	9.3	1.2	3.6	
Acc	73	37	60	62	61	61	59	59	
	GRN	356	DOM	260	ABI	211	GRS	248	

Fantastic double curve bending attributes in this elite Ashland son, R180 defies all the genetic antagonisms in that he is exceptional for calving ease, around breed average growth and well below average on Mature Cow weight plus elite top end carcass traits. These days you can have it all! R180 ranks in the top 5% of the breed for Heavy Grain Index (GRN) plus top 10% for Marbling (IMF).



49 LAWSONS ASHLAND R1220 AI

Birth Date: 21/7/20 AM: AMFU NH: NHFU CA: CAFU DD: DD4%
 Society ID: VLYR1220 ASA: HBR Johnes: J-Bas 6 Mob: RQLD 3 JBAS J-Bas 6
 Sire: GAR EARLY BIRD GAR DAYLIGHT GAR PROGRESS 830 B/R AMBUSH 28 EAGLEHAWK JEDDA 248
 GAR ASHLAND CHAIR ROCK AMBUSH 1018
 PARINGA JUDD J5
 Dam: LAWSONS JUDD M265 GAR SOLUTION LAWSONS PREDESTINED B397
 LAWSONS SOLUTION D19

July 2022 Trans Tasman Angus Cattle Evaluation									
Calving Ease ✓				Growth and Maternal					
	DIR	DTRS	GL	BWT	200	400	600	MCW	MILK
EBVs	6.5	4.7	-5.1	2.5	58	106	138	103	21
Acc	61	51	73	74	72	72	72	70	66
Fertility			Carcase						
	SS	DC	CWT	RIB	RUMP	EMA	RBV	IMF	
EBVs	3.0	-4.8	79	-0.5	-1.3	13.2	1.9	3.1	
Acc	72	40	67	69	66	65	66	65	
	GRN	370	DOM	280	ABI	230	GRS	271	

Equal #5 Heavy Grain Index (GRN) bull in the Sale, top 2% of the breed and equal #8 ranked for 600D Growth, top 11% of the breed plus #3 ranked Eye Muscle Area (EMA) bull in the Sale at +13.2, top 1% of the breed!



50 LAWSONS RELIANT R1051 AI

Birth Date: 12/8/20 AM: AMFU NH: NHFU CA: CAFU DD: DDFU
 Society ID: VLYR1051 ASA: HBR Johnes: J-Bas 6 Mob: RQLD 3 JBAS J-Bas 6
 Sire: GAR SURE FIRE CONNEALY IN SURE 8524 CHAIR ROCK 5050 GAR 8086 B/R DESTINATION 727-928 EAGLEHAWK JEDDA 248
 GAR RELIANT GAR DESTINATION N244
 LAWSONS INCREDIBLE H803
 Dam: LAWSONS INCREDIBLE M302 AYRVALE BARTEL E7 LAWSONS DINKY DI E447 LAWSONS INVINCIBLE C402 LAWSONS PONO V346 D164
 LAWSONS INVINCIBLE G970

July 2022 Trans Tasman Angus Cattle Evaluation									
Calving Ease				Growth and Maternal					
	DIR	DTRS	GL	BWT	200	400	600	MCW	MILK
EBVs	1.0	-0.5	-3.2	4.7	56	98	125	101	23
Acc	54	45	69	73	67	65	65	62	58
Fertility			Carcase						
	SS	DC	CWT	RIB	RUMP	EMA	RBV	IMF	
EBVs	2.0	-4.7	74	-2.1	-2.1	7.6	1.6	3.1	
Acc	61	40	60	62	59	58	60	58	
	GRN	325	DOM	239	ABI	195	GRS	223	

Reliant is on of the leading sires for Net Feed Intake, top 1% of the breed, a key measure of feed efficiency and strongly related to maintenance efficiency in the cow herd. Reliant progeny are also some of the quietest disposition cattle we have ever handled. R1051 ranks in the top 10% of the breed for Heavy Grain Index (GRN).



51 LAWSONS GENUINE R1190 AI

Birth Date: 22/6/20 AM: AMFU NH: NHFU CA: CAFU DD: DDFU
 Society ID: VLYR1190 ASA: HBR Johnes: J-Bas 6 Mob: RQLD 3 JBAS J-Bas 6
 Sire: K C F BENNETT ABSOLUTE S A V FINAL ANSWER 0035 THOMAS MISS LUCY 5152 MCC DAYBREAK EAGLEHAWK JEDDA 248
 GAR GENUINE GAR DAYBREAK 342
 AYRVALE BARTEL E7
 Dam: LAWSONS BARTEL E7 M729 TE MANIA BARTEL B219 EAGLEHAWK JEDDA B32 DUNGOON GOODTHING G167 LAWSONS ULTIMATE F320
 LAWSONS GOODTHING K686

July 2022 Trans Tasman Angus Cattle Evaluation									
Calving Ease ✓				Growth and Maternal					
	DIR	DTRS	GL	BWT	200	400	600	MCW	MILK
EBVs	9.4	6.2	-7.6	0.5	48	86	107	74	21
Acc	53	45	68	74	70	71	73	66	57
Fertility			Carcase						
	SS	DC	CWT	RIB	RUMP	EMA	RBV	IMF	
EBVs	2.7	-7.4	66	0.7	-0.5	9.7	1.5	2.4	
Acc	72	40	61	61	61	60	58	57	
	GRN	334	DOM	260	ABI	219	GRS	247	

#5 ranked Calving Ease Direct (DIR) bull in the Sale at +9.6, top 4% of the breed plus top 10% for Heavy Grain Index (GRN) and Eye Muscle Area (EMA).



52 LAWSONS JUDD R5166 AI

Birth Date: 7/8/20 AM: AMFU NH: NHFU CA: CAFU DD: DDFU
 Society ID: VLYR5166 ASA: HBR Johns: J-Bas 6 Mob: RQLD 3 JBAS J-Bas 6
 Sire: PARINGA JUDD J5
 TUWHARETOA REGENT D145 TE MANIA AMBASSADOR A134
 LAWSONS HENRY VIII Y5
 STRATHEWEN BERKLEY WILPENA F30 TE MANIA BERKLEY B1
 EAGLEHAWK JEDDA Z48
 Dam: LAWSONS ANTICIPATION L704
 GAR ANTICIPATION 7261 MCC DAYBREAK
 GAR 5050 NEW DESIGN 0530
 LAWSONS BARTEL E7 J629 AYRVALE BARTEL E7
 LAWSONS TOTAL D1207

July 2022 Trans Tasman Angus Cattle Evaluation

Calving Ease				Growth and Maternal					
	DIR	DTRS	GL	BWT	200	400	600	MCW	MILK
EBVs	9.6	4.9	-6.7	1.7	50	89	115	99	20
Acc	61	54	85	74	69	70	67	64	63
Fertility				Carcase					
	SS	DC	CWT	RIB	RUMP	EMA	RBV	IMF	
EBVs	1.7	-6.3	73	0.2	0.2	9.1	0.5	3.3	
Acc	62	46	62	64	62	61	62	61	
	GRN	326	DOM	242	ABI	194	GRS	229	



The only son of the legendary Judd in the Sale, R5166 is the #4 ranked Calving Ease Direct (DIR) bull in the Sale at +9.6, top 3% of the breed plus top 10% for Heavy Grain Index (GRN).



Elite ET breed heifers at Gardiner Angus Rnch (GAR), Ashland Kansas, June 2022

53 LAWSONS ASHLAND S113 AI

Birth Date: 1/3/21 **AM:** AMFU **NH:** NHFU **CA:** CAFU **DD:** DDC
Society ID: VLY21S113 **ASA:** HBR **Johnes:** J-Bas 6 **Mob:** S ROMA 22 JBAS J-Bas 6
Sire: GAR ASHLAND
 GAR EARLY BIRD
 CHAIR ROCK AMBUSH 1018
Dam: LAWSONS JUDD P734
 PARINGA JUDD J5
 LAWSONS PREDESTINED D813
 GAR DAYLIGHT
 GAR PROGRESS 830
 B/R AMBUSH 28
 EAGLEHAWK JEDDA Z48
 TUWHARETOA REGENT D145
 STRATHWEN BERKLEY WILPENNA F30
 GAR PREDESTINED
 LAWSONS YIELD GRADE Z1340

July 2022 Trans Tasman Angus Cattle Evaluation

	Calving Ease ✓			Growth and Maternal					
	DIR	DTRS	GL	BWT	200	400	600	MCW	MILK
EBVs	2.5	4.3	-7.6	4.4	63	110	143	117	20
Acc	60	48	85	73	68	66	65	63	59
	Fertility				Carcase				
	SS	DC	CWT	RIB	RUMP	EMA	RBV	IMF	
EBVs	1.7	-3.5	82	-0.9	-1.1	10.3	1.6	2.9	
Acc	62	38	60	62	59	60	59	59	
	GRN	364	DOM	270	ABI	219	GRS	256	



Start of 14-16 Month Old Bulls. S113 Ashland on is the #8 Heavy Grain Index (GRN) bull in the Sale, top 2% of the breed. S113 is also the #3 ranked 600D Growth bull, top 6% of the breed plus top 10% for EMA. These genetic estimates (EBVs) are the most accurate way of predicting the calving ease, growth and carcass potential of a bulls progeny as they take into account all available information on the individual bull plus ancestral and genomic data. Sale Day weights as a very limited snapshot and not a good indicator of genetic potential!

54 LAWSONS QUANTUM S19 AI

Birth Date: 19/3/21 **AM:** AMFU **NH:** NHFU **CA:** CAFU **DD:** DDF
Society ID: VLY21S19 **ASA:** HBR **Johnes:** J-Bas 6 **Mob:** S ROMA 22 JBAS J-Bas 6
Sire: GAR QUANTUM
 GAR MOMENTUM
 GAR IN SURE 1524
Dam: LAWSONS SUNRISE N27
 GAR SUNRISE
 LAWSONS EVIDENT H271
 GAR PROGRESS
 GAR BIG EYE 1770
 CONNEALY IN SURE 8524
 EAGLEHAWK JEDDA Z48
 MCC DAYBREAK
 GAR OBJECTIVE R227
 DUNOON EVIDENT E614
 LAWSONS GRADE UP D30

July 2022 Trans Tasman Angus Cattle Evaluation

	Calving Ease			Growth and Maternal					
	DIR	DTRS	GL	BWT	200	400	600	MCW	MILK
EBVs	-3.1	-2.1	-2.8	6.4	63	108	136	121	19
Acc	53	44	85	71	66	64	64	62	56
	Fertility				Carcase				
	SS	DC	CWT	RIB	RUMP	EMA	RBV	IMF	
EBVs	2.4	-4.2	80	-1.7	-1.8	10.3	2.0	2.9	
Acc	59	36	59	61	57	57	57	57	
	GRN	329	DOM	242	ABI	201	GRS	225	



Lots of grunt here and a little too much birth weight to hit our calving ease specifications but Top 10% of the breed for Heavy Grain Index (GRN) and Eye Muscle Area (EMA).

55 LAWSONS QUANTUM S14 AI

Birth Date: 9/4/21 **AM:** AMFU **NH:** NHFU **CA:** CAFU **DD:** DDFU
Society ID: VLY21S14 **ASA:** HBR **Johnes:** J-Bas 6 **Mob:** S ROMA 22 JBAS J-Bas 6
Sire: GAR QUANTUM
 GAR MOMENTUM
 GAR IN SURE 1524
Dam: LAWSONS JUDD N41
 PARINGA JUDD J5
 LAWSONS BARTEL E7 H59
 GAR PROGRESS
 GAR BIG EYE 1770
 CONNEALY IN SURE 8524
 EAGLEHAWK JEDDA Z48
 TUWHARETOA REGENT D145
 STRATHWEN BERKLEY WILPENNA F30
 AYRVALE BARTEL E7
 LAWSONS ULTIMATE E587

July 2022 Trans Tasman Angus Cattle Evaluation

	Calving Ease ✓			Growth and Maternal					
	DIR	DTRS	GL	BWT	200	400	600	MCW	MILK
EBVs	3.8	-0.4	-2.8	4.2	57	102	128	96	24
Acc	54	45	85	71	66	64	64	63	57
	Fertility				Carcase				
	SS	DC	CWT	RIB	RUMP	EMA	RBV	IMF	
EBVs	2.8	-5.2	81	-0.6	-0.6	10.6	1.3	3.1	
Acc	59	38	59	61	58	57	58	57	
	GRN	352	DOM	262	ABI	216	GRS	249	



S14 is one of the elite bulls in the Sale. Superb growth curve and elite carcass along with S14's exceptional calving ease and an outstanding attractive bull to look at as well. Top 5% of the breed for Heavy Grain Index (GRN) and Eye Muscle Area (EMA).

56 LAWSONS QUANTUM S160 AI

Birth Date: 8/3/21 AM: AMFU NH: NHFU CA: CAFU DD: DD3%
 Society ID: VLY21S160 ASA: APR Johnes: J-Bas 6 Mob: S ROMA 22 JBAS J-Bas 6
 Sire: GAR QUANTUM
 GAR MOMENTUM
 GAR IN SURE 1524
 Dam: LAWSONS NOVAK K519
 LAWSONS RIGHT DIRECTION D662

GAR PROGRESS
 GAR BIG EYE 1770
 CONNEALY IN SURE 8524
 EAGLEHAWK JEDDA Z48
 TC TOTAL 410
 LAWSONS GAR PREDESTINED B770
 GAR RIGHT DIRECTION
 LAWSONS ROCKY W129 A723

July 2022 Trans Tasman Angus Cattle Evaluation									
Calving Ease					Growth and Maternal				
	DIR	DTRS	GL	BWT	200	400	600	MCW	MILK
EBVs	-1.3	-0.8	-2.0	4.7	55	97	124	106	23
Acc	56	47	85	74	68	65	66	63	59
Fertility				Carcase					
	SS	DC	CWT	RIB	RUMP	EMA	RBV	IMF	
EBVs	2.5	-3.4	75	-1.4	-2.1	9.8	1.3	2.8	
Acc	60	39	60	61	58	58	58	58	
	GRN	287	DOM	210	ABI	170	GRS	193	



Top 10% of the breed for Eye Muscle Area (EMA). Explosive growth and one of the picks visually, not surprising as Quantum and Novak are two of the most attractive Angus bulls you will see. We have been 100% AI/ET since 1994 and the only herd in Australia (all breeds) with that commitment to breeding the best balanced performance bulls on a global genetics platform.

57 LAWSONS QUANTUM S179 AI

Birth Date: 26/3/21 AM: AM3% NH: NHFU CA: CAFU DD: DDFU
 Society ID: VLY21S179 ASA: HBR Johnes: J-Bas 6 Mob: S ROMA 22 JBAS J-Bas 6
 Sire: GAR QUANTUM
 GAR MOMENTUM
 GAR IN SURE 1524
 Dam: LAWSONS NOVAK K799
 LAWSONS SOLUTION C1114

GAR PROGRESS
 GAR BIG EYE 1770
 CONNEALY IN SURE 8524
 EAGLEHAWK JEDDA Z48
 TC TOTAL 410
 LAWSONS GAR PREDESTINED B770
 GAR SOLUTION
 GAR H141 PRECISION 43

July 2022 Trans Tasman Angus Cattle Evaluation									
Calving Ease					Growth and Maternal				
	DIR	DTRS	GL	BWT	200	400	600	MCW	MILK
EBVs	-1.7	-0.3	-4.7	4.9	58	103	131	111	22
Acc	56	47	85	74	68	65	66	63	60
Fertility				Carcase					
	SS	DC	CWT	RIB	RUMP	EMA	RBV	IMF	
EBVs	2.4	-3.5	78	-1.5	-2.0	9.6	1.4	3.1	
Acc	60	39	60	61	58	58	59	58	
	GRN	314	DOM	228	ABI	186	GRS	213	



Quantum rose to the top at Gardiner Angus Ranch (GAR) in Kansas and Novak rose to the top against some of the toughest mates in his contemporary group so it is little wonder that Lots 56 and 57 are both exceptional bulls both from a genetic and phenotype perspective. Yes you can have it all!

58 LAWSONS GENUINE S110 AI

Birth Date: 1/3/21 AM: AMFU NH: NHFU CA: CAFU DD: DDFU
 Society ID: VLY21S110 ASA: APR Johnes: J-Bas 6 Mob: S ROMA 22 JBAS J-Bas 6
 Sire: GAR GENUINE
 K C F BENNETT ABSOLUTE
 GAR DAYBREAK 342
 Dam: LAWSONS MOMENTOUS Q51
 LAWSONS HARVARD L606

S A V FINAL ANSWER 0035
 THOMAS MISS LUCY 5152
 MCC DAYBREAK
 EAGLEHAWK JEDDA Z48
 GAR MOMENTUM
 LAWSONS AFFRICA H229
 LAWSONS HARVARD H205
 LAWSONS STORTH OAKS H539

July 2022 Trans Tasman Angus Cattle Evaluation									
Calving Ease					Growth and Maternal				
	DIR	DTRS	GL	BWT	200	400	600	MCW	MILK
EBVs	6.4	2.8	-10.0	2.9	53	93	122	102	19
Acc	54	43	85	73	67	65	64	60	56
Fertility				Carcase					
	SS	DC	CWT	RIB	RUMP	EMA	RBV	IMF	
EBVs	2.1	-4.5	69	-0.3	-1.3	9.2	1.3	3.1	
Acc	59	35	58	60	57	56	57	57	
	GRN	325	DOM	242	ABI	194	GRS	228	



This high growth Genuine sons individual performance is even more remarkable given he is out of a two year old Momentous daughter, the latest elite genetics here! S110 ranks in the top 10% of the breed for Heavy Grain Index (GRN).

59 LAWSONS MOMENTOUS S20 AI

Birth Date: 17/3/21 AM: AMFU NH: NHFU CA: CAFU DD: DDFU
 Society ID: VLY21S20 ASA: HBR Johnes: J-Bas 6 Mob: S ROMA 22 JBAS J-Bas 6
 Sire: GAR MOMENTUM GAR PROGRESS
 LAWSONS MOMENTOUS M518 GAR BIG EYE 1770
 LAWSONS AFRICA H229 TE MANIA AFRICA A217
 EAGLEHAWK JEDDA Z48
 Dam: ALLOURA GET CRACKING G10 TE MANIA BERKLEY B1
 LAWSONS GET CRACKING Q8 ALLOURA JEDDA Z15
 LAWSONS JUDD N41 PARINGA JUDD J5
 LAWSONS BARTEL E7 H59

July 2022 Trans Tasman Angus Cattle Evaluation

	Calving Ease			Growth and Maternal					
	DIR	DTRS	GL	BWT	200	400	600	MCW	MILK
EBVs	1.6	-2.5	-4.2	4.4	52	94	115	90	24
Acc	60	52	85	69	66	64	65	65	61
	Fertility				Carcase				
	SS	DC	CWT	RIB	RUMP	EMA	RBV	IMF	
EBVs	1.9	-5.4	67	-0.2	-0.2	11.9	0.0	4.5	
Acc	62	42	61	63	60	60	60	60	
	GRN	346	DOM	242	ABI	192	GRS	230	



Absolutely incredible weight gain performance from S20, this Momentous son is out of a two year old Get Cracking daughter and he is as cool as a cucumber! S20 ranks in the top 5% of the breed for Heavy Grain Index (GRN) plus equal #9 ranked Eye Muscle Area (EMA) bull in the Sale at +11.9 and equal #2 for Marbling (IMF) at +4.5, both top 2% of the breed for these important drivers of meat quality (MSA) and yield.

60 LAWSONS MOMENTOUS S169 AI

Birth Date: 11/3/21 AM: AMFU NH: NHFU CA: CAFU DD: DD7%
 Society ID: VLY21S169 ASA: HBR Johnes: J-Bas 6 Mob: S ROMA 22 JBAS J-Bas 6
 Sire: GAR MOMENTUM GAR PROGRESS
 LAWSONS MOMENTOUS M518 GAR BIG EYE 1770
 LAWSONS AFRICA H229 TE MANIA AFRICA A217
 EAGLEHAWK JEDDA Z48
 Dam: LAWSONS TANK B1155 LAWSONS TANK X1235
 LAWSONS TANK B1155 G1259 LAWSONS NEW DESIGN 1407 Z1393
 LAWSONS SOLUTION D161 GAR SOLUTION
 LAWSONS INTEGRITY B1455

July 2022 Trans Tasman Angus Cattle Evaluation

	Calving Ease			Growth and Maternal					
	DIR	DTRS	GL	BWT	200	400	600	MCW	MILK
EBVs	-2.2	-4.5	-1.4	3.1	42	81	97	68	24
Acc	63	55	85	74	69	67	67	67	64
	Fertility				Carcase				
	SS	DC	CWT	RIB	RUMP	EMA	RBV	IMF	
EBVs	1.6	-4.6	56	-0.9	-1.2	9.8	0.4	3.7	
Acc	64	44	63	65	62	61	61	61	
	GRN	283	DOM	202	ABI	163	GRS	188	



Attractive and exceptionally good disposition as is the norm with Momentous progeny, pedigree goes back to one of the best grass converters we have seen in Tank. S169 ranks in the top 10% of the breed for Eye Muscle Area (EMA) and for Marbling (IMF).

61 LAWSONS QUANTUM S166 AI

Birth Date: 9/3/21 AM: AM2% NH: NHFU CA: CAFU DD: DDF
 Society ID: VLY21S166 ASA: HBR Johnes: J-Bas 6 Mob: S ROMA 22 JBAS J-Bas 6
 Sire: GAR MOMENTUM GAR PROGRESS
 GAR QUANTUM GAR BIG EYE 1770
 GAR IN SURE 1524 CONNEALY IN SURE 8524
 EAGLEHAWK JEDDA Z48
 Dam: ALLOURA GET CRACKING G10 TE MANIA BERKLEY B1
 LAWSONS GET CRACKING Q16 ALLOURA JEDDA Z15
 LAWSONS AFRICA H225 TE MANIA AFRICA A217
 LAWSONS GAR SOLUTION D693

July 2022 Trans Tasman Angus Cattle Evaluation

	Calving Ease			Growth and Maternal					
	DIR	DTRS	GL	BWT	200	400	600	MCW	MILK
EBVs	-2.0	-0.6	-1.7	6.6	61	105	132	110	19
Acc	54	45	85	73	66	63	63	60	56
	Fertility				Carcase				
	SS	DC	CWT	RIB	RUMP	EMA	RBV	IMF	
EBVs	2.5	-4.5	76	-1.5	-1.8	12.6	1.3	4.0	
Acc	59	38	58	60	57	57	57	57	
	GRN	345	DOM	248	ABI	201	GRS	234	



Massive growth potential here at +132 on 600D Growth and backed up by his tremendous performance in a tough contemporary. S166 is a larger framed bull sired by high growth sire GAR Quantum and is out of a two year old Get Cracking daughter. S166 ranks in the top 5% of the breed for Heavy Grain Index (GRN) and Marbling (IMF). #4 Eye Muscle Area (EMA) bull in the Sale at +12.6, top 2% of the breed.

62 LAWSONS QUANTUM S172 AI

Birth Date: 25/3/21 AM: AMFU NH: NHFU CA: CAFU DD: DDFU
 Society ID: VLY21S172 ASA: HBR Johnes: J-Bas 6 Mob: S ROMA 22 JBAS J-Bas 6
 Sire: GAR QUANTUM
 GAR MOMENTUM
 GAR IN SURE 1524
 GAR ANTICIPATION 7261
 Dam: LAWSONS ANTICIPATION K914
 LAWSONS TANK B1155 G625
 GAR PROGRESS
 GAR BIG EYE 1770
 CONNEALY IN SURE 8524
 EAGLEHAWK JEDDA Z48
 MCC DAYBREAK
 GAR 5050 NEW DESIGN 0530
 LAWSONS TANK B1155
 LAWSONS GRADE UP D83

July 2022 Trans Tasman Angus Cattle Evaluation

Calving Ease ✓				Growth and Maternal					
	DIR	DTRS	GL	BWT	200	400	600	MCW	MILK
EBVs	7.2	5.0	-6.0	2.5	58	101	124	104	16
Acc	55	47	84	73	67	66	67	65	61
Fertility				Carcase					
	SS	DC	CWT	RIB	RUMP	EMA	RBV	IMF	
EBVs	3.0	-3.0	77	-0.7	-1.5	15.2	2.7	2.2	
Acc	63	38	62	64	61	60	61	60	
	GRN	335	DOM	257	ABI	221	GRS	243	

Enormous capacity and depth of rib in this attractive Quantum son, S172 is the largest Eye Muscle Area (EMA) bull in the Sale at +15.2, which puts him as one of the highest in the breed and top 1% plus top 10% of the breed for Heavy Grain Index (GRN).



63 LAWSONS QUANTUM S163 AI

Birth Date: 9/3/21 AM: AMFU NH: NHFU CA: CAFU DD: DDF
 Society ID: VLY21S163 ASA: HBR Johnes: J-Bas 6 Mob: S ROMA 22 JBAS J-Bas 6
 Sire: GAR QUANTUM
 GAR MOMENTUM
 GAR IN SURE 1524
 PARINGA JUDD J5
 Dam: LAWSONS JUDD P1438
 LAWSONS ANTICIPATION L1116
 GAR PROGRESS
 GAR BIG EYE 1770
 CONNEALY IN SURE 8524
 EAGLEHAWK JEDDA Z48
 TUWHARETOA REGENT D145
 STRATHEWEN BERKLEY WILPENA F30
 GAR ANTICIPATION 7261
 LAWSONS EVIDENT H271

July 2022 Trans Tasman Angus Cattle Evaluation

Calving Ease ✓				Growth and Maternal					
	DIR	DTRS	GL	BWT	200	400	600	MCW	MILK
EBVs	5.3	1.0	-1.9	2.8	53	95	116	93	23
Acc	54	45	85	72	66	63	63	60	56
Fertility				Carcase					
	SS	DC	CWT	RIB	RUMP	EMA	RBV	IMF	
EBVs	2.6	-4.1	74	-0.6	-1.0	12.2	1.5	3.2	
Acc	58	37	58	60	57	56	57	57	
	GRN	334	DOM	246	ABI	204	GRS	232	



An outstanding individual, both his sire and maternal grand sire are eye catching visually as well as having the numbers to drive genetic gain and so no surprise S163 is a standout that will breed high performance steers and the maternal power to take your cow herd to a new level. S163 ranks in the top 10% of the breed for Heavy Grain Index (GRN). S163 is the #9 ranked Eye Muscle Area (EMA) bull in the Sale at +12.2, top 2% of the breed.

64 LAWSONS ASHLAND S177 AI

Birth Date: 26/3/21 AM: AMFU NH: NHFU CA: CAFU DD: DD2%
 Society ID: VLY21S177 ASA: HBR Johnes: J-Bas 6 Mob: S ROMA 22 JBAS J-Bas 6
 Sire: GAR ASHLAND
 GAR EARLY BIRD
 CHAIR ROCK AMBUSH 1018
 AYRVALE BARTEL E7
 Dam: LAWSONS BARTEL E7 K809
 LAWSONS PREDESTINED G1147
 GAR DAYLIGHT
 GAR PROGRESS 830
 B/R AMBUSH 28
 EAGLEHAWK JEDDA Z48
 TE MANIA BARTEL B219
 EAGLEHAWK JEDDA B32
 GAR PREDESTINED
 LAWSONS GAR YIELD GRADE A556

July 2022 Trans Tasman Angus Cattle Evaluation

Calving Ease ✓				Growth and Maternal					
	DIR	DTRS	GL	BWT	200	400	600	MCW	MILK
EBVs	1.6	6.3	-5.4	4.3	59	102	131	101	20
Acc	61	49	85	74	69	67	68	66	62
Fertility				Carcase					
	SS	DC	CWT	RIB	RUMP	EMA	RBV	IMF	
EBVs	1.8	-5.3	74	-1.0	-1.0	9.3	1.4	2.9	
Acc	64	41	62	63	61	61	61	61	
	GRN	357	DOM	268	ABI	219	GRS	254	



Ashland has taken our breeding program to a new frontier in terms of curve bending and muscle and still maintaining a moderate stature. No exception here with this attractive exciting young gun, S177 ranks in the top 5% of the breed for Heavy Grain Index (GRN).

65 LAWSONS GENUINE S181 AI

Birth Date: 29/3/21 AM: AMFU NH: NHFU CA: CAFU DD: DD8%
 Society ID: VLY21S181 ASA: APR Johnes: J-Bas 6 Mob: S ROMA 22 JBAS J-Bas 6
 Sire: **GAR GENUINE**
 K C F BENNETT ABSOLUTE S A V FINAL ANSWER 0035
 GAR DAYBREAK 342 THOMAS MISS LUCY 5152
 MCC DAYBREAK
 EAGLEHAWK JEDDA Z48
 Dam: **LAWSONS GET CRACKING P39**
 ALLOURA GET CRACKING G10 TE MANIA BERKLEY B1
 LAWSONS MOMENTUM L784 GAR MOMENTUM
 LAWSONS NOVAK H622

July 2022 Trans Tasman Angus Cattle Evaluation									
Calving Ease ✓				Growth and Maternal					
	DIR	DTRS	GL	BWT	200	400	600	MCW	MILK
EBVs	4.3	2.5	-4.8	3.6	55	97	122	108	17
Acc	54	43	85	73	67	64	65	60	55
Fertility			Carcase						
	SS	DC	CWT	RIB	RUMP	EMA	RBV	IMF	
EBVs	1.4	-4.9	70	0.0	-1.8	9.9	0.9	3.4	
Acc	59	37	58	60	57	57	57	57	
	GRN	322	DOM	236	ABI	193	GRS	220	



The next five Lots are all GAR Genuine sons, look closely at their Direct Calving Ease (DIR) numbers. We don't make this data up, in fact tagging and weighing calves at birth is a massive effort by our team and they make this commitment so we can provide you with reliable, predictable advice backed by accurate science based information (EBVs). S181 ranks in the top 10% of the breed for Eye Muscle Area (EMA) and for Marbling (IMF). Exactly the type in terms of genetic and phenotype we are aiming to breed generation after generation.

66 LAWSONS GENUINE S18 AI

Birth Date: 14/3/21 AM: AMFU NH: NH2% CA: CAFU DD: DDC
 Society ID: VLY21S18 ASA: HBR Johnes: J-Bas 6 Mob: S ROMA 22 JBAS J-Bas 6
 Sire: **GAR GENUINE**
 K C F BENNETT ABSOLUTE S A V FINAL ANSWER 0035
 GAR DAYBREAK 342 THOMAS MISS LUCY 5152
 MCC DAYBREAK
 EAGLEHAWK JEDDA Z48
 Dam: **LAWSONS MOMENTUM M14**
 GAR MOMENTUM GAR PROGRESS
 LAWSONS HENRRY D1054 J987 GAR BIG EYE 1770
 LAWSONS HENRY VIII D1054
 LAWSONS PONO V346 C1189

July 2022 Trans Tasman Angus Cattle Evaluation									
Calving Ease ✓				Growth and Maternal					
	DIR	DTRS	GL	BWT	200	400	600	MCW	MILK
EBVs	9.1	4.8	-9.1	-0.2	44	83	101	72	20
Acc	54	44	85	71	67	64	65	62	57
Fertility			Carcase						
	SS	DC	CWT	RIB	RUMP	EMA	RBV	IMF	
EBVs	1.5	-2.7	58	-0.4	-2.0	8.9	1.4	3.1	
Acc	60	37	59	61	58	58	58	57	
	GRN	314	DOM	231	ABI	190	GRS	218	



Good solid Genuine son, exceptional calving ease and is the #6 ranked Calving Ease Direct (DIR) bull in the Sale at +9.1, top 5% of the breed. GAR Genuine has given us some good curve bending attributes and some pedigree breadth that is important to balance up with our matings. We leave nothing to chance, every one of our 2,500 females we mate each year has a carefully planned AI mating from the best 6-10 bulls we select from around the world.

67 LAWSONS GENUINE S127 AI

Birth Date: 4/3/21 AM: AMFU NH: NHFU CA: CAFU DD: DD2%
 Society ID: VLY21S127 ASA: HBR Johnes: J-Bas 6 Mob: S ROMA 22 JBAS J-Bas 6
 Sire: **GAR GENUINE**
 K C F BENNETT ABSOLUTE S A V FINAL ANSWER 0035
 GAR DAYBREAK 342 THOMAS MISS LUCY 5152
 MCC DAYBREAK
 EAGLEHAWK JEDDA Z48
 Dam: **LAWSONS MOMENTOUS Q68**
 LAWSONS MOMENTOUS M518 GAR MOMENTUM
 LAWSONS SUNRISE M871 LAWSONS AFRICA H229
 ??UNKNOWN SIRE
 LAWSONS BARTEL E7 J699

July 2022 Trans Tasman Angus Cattle Evaluation									
Calving Ease ✓				Growth and Maternal					
	DIR	DTRS	GL	BWT	200	400	600	MCW	MILK
EBVs	5.9	2.4	-6.2	1.8	51	94	116	88	21
Acc	54	43	85	73	67	65	64	60	56
Fertility			Carcase						
	SS	DC	CWT	RIB	RUMP	EMA	RBV	IMF	
EBVs	1.8	-4.7	65	-0.3	-1.5	8.9	1.3	3.2	
Acc	59	36	58	60	57	57	57	57	
	GRN	339	DOM	251	ABI	208	GRS	237	



Another superbly well balanced Genuine calving-ease son out of a two year old Momentous daughter, great job! S127 ranks in the top 10% of the breed for Heavy Grain Index (GRN).

68 LAWSONS GENUINE S107 AI

Birth Date: 28/2/21 AM: AMFU NH: NHFU CA: CAFU DD: DDFU
 Society ID: VLY21S107 ASA: HBR Johnes: J-Bas 6 Mob: S ROMA 22 JBAS J-Bas 6
 Sire: **GAR GENUINE** K C F BENNETT ABSOLUTE S A V FINAL ANSWER 0035 THOMAS MISS LUCY 5152 MCC DAYBREAK EAGLEHAWK JEDDA Z48
 GAR DAYBREAK 342
 GAR PROPHET
 Dam: **LAWSONS PROPHEP P494** C R A BEXTOR 872 5205 608 GAR OBJECTIVE 1885 AYRVALE BARTEL E7 LAWSONS TANK D779
 LAWSONS BARTEL E7 H532

July 2022 Trans Tasman Angus Cattle Evaluation

Calving Ease ✓		Growth and Maternal								
DIR DTRS GL BWT		200	400	600	MCW	MILK				
EBVs	10.3	7.4	-8.9	0.5	57	101	130	106	21	
Acc	55	46	85	73	67	65	65	61	56	
Fertility				Carcase						
SS DC CWT RIB RUMP				EMA	RBV	IMF				
EBVs	1.9	-6.8	73	0.8	-0.7	7.6	0.5	3.3		
Acc	59	39	59	61	58	58	58	58		
GRN		371	DOM	274	ABI	221	GRS	262		

#4 ranked Calving Ease Direct (DIR) bull in the Sale at +10.3 and #4 ranked for Heavy Grain Index (GRN), top 2% of the breed for both DIR and GRN.



69 LAWSONS GENUINE S125 AI

Birth Date: 4/3/21 AM: AMFU NH: NHFU CA: CAFU DD: DD5%
 Society ID: VLY21S125 ASA: HBR Johnes: J-Bas 6 Mob: S ROMA 22 JBAS J-Bas 6
 Sire: **GAR GENUINE** K C F BENNETT ABSOLUTE S A V FINAL ANSWER 0035 THOMAS MISS LUCY 5152 MCC DAYBREAK EAGLEHAWK JEDDA Z48
 GAR DAYBREAK 342
 LAWSONS MOMENTOUS M518
 Dam: **LAWSONS MOMENTOUS Q26** GAR MOMENTUM LAWSONS AFRICA H229 TUWHARETOA REGENT D145 LAWSONS DINKY DI E1143
 LAWSONS REGENT J429

July 2022 Trans Tasman Angus Cattle Evaluation

Calving Ease ✓		Growth and Maternal								
DIR DTRS GL BWT		200	400	600	MCW	MILK				
EBVs	5.7	0.3	-6.5	2.2	53	96	122	95	22	
Acc	55	44	85	73	68	65	64	60	56	
Fertility				Carcase						
SS DC CWT RIB RUMP				EMA	RBV	IMF				
EBVs	2.1	-4.4	71	-0.4	-1.9	9.0	1.3	3.3		
Acc	59	37	58	60	57	57	57	57		
GRN		342	DOM	250	ABI	202	GRS	238		

Wow, look at the genetic profile and balance across all traits on this young fella! A Genuine calving-ease son out of a two year old Momentous heifer. S125 ranks in the top 5% of the breed for Heavy Grain Index (GRN).



70 LAWSONS MOMENTOUS S155 AI

Birth Date: 8/3/21 AM: AMFU NH: NHFU CA: CAFU DD: DDC
 Society ID: VLY21S155 ASA: HBR Johnes: J-Bas 6 Mob: S ROMA 22 JBAS J-Bas 6
 Sire: **LAWSONS MOMENTOUS M518** GAR MOMENTUM GAR PROGRESS GAR BIG EYE 1770 TE MANIA AFRICA A217 EAGLEHAWK JEDDA Z48
 LAWSONS AFRICA H229
 LAWSONS LINKEDIN L483
 Dam: **LAWSONS LINKEDIN P358** PARINGA JUDD J5 LAWSONS BARTEL E7 H221 GAR SURE FIRE LAWSONS HENRY VIII G681
 LAWSONS SURE FIRE L411

July 2022 Trans Tasman Angus Cattle Evaluation

Calving Ease ✓		Growth and Maternal								
DIR DTRS GL BWT		200	400	600	MCW	MILK				
EBVs	3.1	-5.5	-3.3	3.1	49	91	113	88	26	
Acc	60	52	85	73	68	65	65	63	61	
Fertility				Carcase						
SS DC CWT RIB RUMP				EMA	RBV	IMF				
EBVs	2.9	-4.3	66	-0.6	0.2	9.9	0.5	3.8		
Acc	61	41	61	62	60	59	59	59		
GRN		320	DOM	228	ABI	181	GRS	216		

Larger framed Momentous son that is filling out nicely and well balanced across the board. S155 ranks in the top 10% of the breed for Eye Muscle Area (EMA) plus top 5% for Marbling (IMF).



71 LAWSONS INDEX S168 AI

Birth Date: 11/3/21 **AM:** AMFU **NH:** NHFU **CA:** CAFU **DD:** DDFU
Society ID: VLY21S168 **ASA:** HBR **Johnes:** J-Bas 6 **Mob:** S ROMA 22 JBAS J-Bas 6
Sire: VAR INDEX
 GAR INGENUITY
 SANDPOINT BLACKBIRD 8809
 GAR NEW DESIGN 5050
 GAR OBJECTIVE 1067
 CONNEALY ONWARD
 EAGLEHAWK JEDDA 248
Dam: LAWSONS PROPHET M866
 LAWSONS NOVAK H113
 C R A BEXTOR 872 5205 608
 GAR OBJECTIVE 1885
 LAWSONS NOVAK E313
 LAWSONS GAR SOLUTION D1171

July 2022 Trans Tasman Angus Cattle Evaluation

Calving Ease		Growth and Maternal							
DIR	DTRS	GL	BWT	200	400	600	MCW	MILK	
EBVs	1.6	2.9	-0.7	3.5	54	94	115	86	21
Acc	59	51	85	73	68	66	66	66	62

Fertility		Carcase						
SS	DC	CWT	RIB	RUMP	EMA	RBV	IMF	
EBVs	0.4	-5.3	64	-0.1	-1.0	9.7	0.8	2.9
Acc	62	44	61	63	61	60	61	60

GRN	333	DOM	247	ABI	206	GRS	230
------------	-----	------------	-----	------------	-----	------------	-----



S168 ranks in the top 10% of the breed for Heavy Grain Index (GRN) and Eye Muscle Area (EMA). These Sale bulls have been backgrounded prior to Sale at Bfeeders near Warwick, Qld. The bulls are run in larger paddocks and given a couple of months to acclimatise in the north. We appreciate the great job BFeeders do and the support they have given us over the past two years when it was difficult to travel.

72 LAWSONS QUANTUM S174 AI

Birth Date: 26/3/21 **AM:** AMFU **NH:** NH1% **CA:** CAFU **DD:** DDFU
Society ID: VLY21S174 **ASA:** APR **Johnes:** J-Bas 6 **Mob:** S ROMA 22 JBAS J-Bas 6
Sire: GAR QUANTUM
 GAR MOMENTUM
 GAR IN SURE 1524
 GAR PROGRESS
 GAR BIG EYE 1770
 CONNEALY IN SURE 8524
 EAGLEHAWK JEDDA 248
Dam: LAWSONS INCREDIBLE M812
 LAWSONS ANTICIPATION K591
 AYRVALE BARTEL E7
 LAWSONS DINKY DI E447
 GAR ANTICIPATION 7261
 LAWSONS TANK D853

July 2022 Trans Tasman Angus Cattle Evaluation

Calving Ease		Growth and Maternal							
DIR	DTRS	GL	BWT	200	400	600	MCW	MILK	
EBVs	-4.4	-2.4	-3.3	6.5	64	107	139	117	19
Acc	55	45	85	73	67	64	64	62	58

Fertility		Carcase						
SS	DC	CWT	RIB	RUMP	EMA	RBV	IMF	
EBVs	2.8	-4.6	83	-1.8	-2.1	11.9	2.1	3.1
Acc	59	37	58	60	57	56	57	57

GRN	338	DOM	248	ABI	201	GRS	234
------------	-----	------------	-----	------------	-----	------------	-----



Top 10% of the breed for Heavy Grain Index (GRN) and 600D Growth and #7 ranked in Sale for 600D Growth potential. S174 is a good example of why we shouldn't use Sale Day weights to estimate the growth potential of progeny, the EBVs are a lot more meaningful and accurate estimates of an animals genetic potential. Equal #9 ranked Eye Muscle Area (EMA) bull in the Sale at +11.9, top 2% of the breed.

73 LAWSONS MONTALTO S171 AI

Birth Date: 11/3/21 **AM:** AM17% **NH:** NHFU **CA:** CAFU **DD:** DDFU
Society ID: VLY21S171 **ASA:** HBR **Johnes:** J-Bas 6 **Mob:** S ROMA 22 JBAS J-Bas 6
Sire: TE MANIA MONTALTO M1314
 TE MANIA BERKLEY B1
 TE MANIA MITTAGONG H390
 TE MANIA YORKSHIRE Y437
 TE MANIA LOWAN Z53
 TE MANIA BANJO B170
 EAGLEHAWK JEDDA 248
Dam: LAWSONS NOVAK K794
 LAWSONS SOLUTION C1116
 TC TOTAL 410
 LAWSONS GAR PREDESTINED B770
 GAR SOLUTION
 GAR ENHANCER 1283

July 2022 Trans Tasman Angus Cattle Evaluation

Calving Ease		Growth and Maternal							
DIR	DTRS	GL	BWT	200	400	600	MCW	MILK	
EBVs	2.2	3.8	-1.3	3.8	45	88	108	94	20
Acc	57	49	85	74	68	66	66	65	60

Fertility		Carcase						
SS	DC	CWT	RIB	RUMP	EMA	RBV	IMF	
EBVs	3.1	-6.4	59	-1.3	-1.5	7.5	0.7	3.2
Acc	62	42	59	61	59	58	59	58

GRN	263	DOM	198	ABI	169	GRS	183
------------	-----	------------	-----	------------	-----	------------	-----



We understand that it's harder to select bulls at a younger age from a visual basis but we would urge buyers to trust the numbers and our breeding program as buying bulls at a younger age is a good way of getting an extra year or two out of your bulls. We have found these young bulls handle the tough going, but recommend they go out for a 2-3 month joining period and then drenched and spelled. We also recommend you give bulls access to loose lick minerals and maintain their vaccination status for pesti virus (BVD), 7 in 1 and vibriosis as a minimum annual treatment at least a month prior to joining.

74 LAWSONS ASHLAND S145 AI

Birth Date: 6/3/21 AM: AMFU NH: NHF CA: CAFU DD: DDFU
 Society ID: VLY21S145 ASA: HBR Johnes: J-Bas 6 Mob: S ROMA 22 JBAS J-Bas 6
 Sire: GAR EARLY BIRD GAR DAYLIGHT GAR PROGRESS 830
 GAR ASHLAND B/R AMBUSH 28 EAGLEHAWK JEDDA Z48
 CHAIR ROCK AMBUSH 1018
 Dam: LAWSONS MOMENTUM P289 GAR PROGRESS GAR BIG EYE 1770
 LAWSONS JUDD M875 LAWSONS BARTEL E7 H783

July 2022 Trans Tasman Angus Cattle Evaluation									
Calving Ease ✓					Growth and Maternal				
	DIR	DTRS	GL	BWT	200	400	600	MCW	MILK
EBVs	1.4	3.8	-5.2	3.9	59	105	136	107	20
Acc	60	48	85	73	68	66	65	63	59
Fertility			Carcase						
	SS	DC	CWT	RIB	RUMP	EMA	RBV	IMF	
EBVs	1.2	-1.6	77	-1.6	-1.9	11.5	1.6	3.5	
Acc	62	37	60	62	59	60	59	60	
	GRN	355	DOM	257	ABI	204	GRS	244	

An absolute brick and impeccable looks and numbers! S145 ranks in the top 5% of the breed for Heavy Grain Index (GRN) and Eye Muscle Area (EMA).



75 LAWSONS MOMENTUM S133 AI

Birth Date: 5/3/21 AM: AMFU NH: NHFU CA: CAFU DD: DDFU
 Society ID: VLY21S133 ASA: HBR Johnes: J-Bas 6 Mob: S ROMA 22 JBAS J-Bas 6
 Sire: GAR PROGRESS GAR PREDESTINED GAR OBJECTIVE 2345
 GAR MOMENTUM ALC BIG EYE D09N
 GAR BIG EYE 1770 EAGLEHAWK JEDDA Z48
 Dam: TC TOTAL 410 BON VIEW NEW DESIGN 208
 LAWSONS TOTAL K666 TC ERICA EILEEN 2047
 LAWSONS GAR YIELD GRADE A556 GAR YIELD GRADE
 LAWSONS GAR NEW DESIGN 1407 Y518

July 2022 Trans Tasman Angus Cattle Evaluation									
Calving Ease ✓					Growth and Maternal				
	DIR	DTRS	GL	BWT	200	400	600	MCW	MILK
EBVs	2.3	2.6	-5.5	2.1	45	83	101	90	21
Acc	63	57	85	74	69	67	68	68	65
Fertility			Carcase						
	SS	DC	CWT	RIB	RUMP	EMA	RBV	IMF	
EBVs	1.1	-1.6	59	-0.9	-1.5	9.1	0.6	3.6	
Acc	64	48	64	65	63	62	63	62	
	GRN	279	DOM	194	ABI	155	GRS	179	

S133 ranks in the top 10% of the breed for Marbling (IMF). An interesting pedigree that traces back to an imported Bon View New Design 1407 and GAR Precision, both these sires played a major role in our foundations.



76 LAWSONS GENUINE S102 AI

Birth Date: 27/2/21 AM: AMFU NH: NHFU CA: CAFU DD: DDC
 Society ID: VLY21S102 ASA: HBR Johnes: J-Bas 6 Mob: S ROMA 22 JBAS J-Bas 6
 Sire: K C F BENNETT ABSOLUTE S A V FINAL ANSWER 0035
 GAR GENUINE THOMAS MISS LUCY 5152
 GAR DAYBREAK 342 MCC DAYBREAK
 EAGLEHAWK JEDDA Z48
 Dam: LAWSONS MOMENTOUS M518 GAR MOMENTUM
 LAWSONS MOMENTOUS Q20 LAWSONS AFRICA H229
 LAWSONS DINKY DI H557 LAWSONS DINKY-DI Z191
 LAWSONS EQUATOR D838

July 2022 Trans Tasman Angus Cattle Evaluation									
Calving Ease ✓					Growth and Maternal				
	DIR	DTRS	GL	BWT	200	400	600	MCW	MILK
EBVs	7.4	2.7	-8.0	2.0	54	98	124	99	21
Acc	54	44	85	73	67	65	64	60	56
Fertility			Carcase						
	SS	DC	CWT	RIB	RUMP	EMA	RBV	IMF	
EBVs	2.4	-4.5	69	-0.4	-1.5	7.5	1.0	3.1	
Acc	59	36	58	60	57	57	57	57	
	GRN	336	DOM	248	ABI	203	GRS	235	

A Genuine calving-ease son out of a two year old Momentous heifer. S102 ranks in the top 10% of the breed for Heavy Grain Index (GRN).



77 LAWSONS GENUINE S189 AI

Birth Date: 1/4/21 AM: AM2% NH: NHFU CA: CAFU DD: DDFU
 Society ID: VLY21S189 ASA: HBR Johnes: J-Bas 6 Mob: S ROMA 22 JBAS J-Bas 6
 Sire: **GAR GENUINE** K C F BENNETT ABSOLUTE S A V FINAL ANSWER 0035 THOMAS MISS LUCY 5152 MCC DAYBREAK EAGLEHAWK JEDDA Z48
 GAR DAYBREAK 342
 LAWSONS MOMENTOUS M518
 Dam: **LAWSONS MOMENTOUS Q32** LAWSONS AFRICA H229 DUNOON GOODTHING G167 LAWSONS SOLUTION D24
 LAWSONS GOODTHING K505

July 2022 Trans Tasman Angus Cattle Evaluation									
Calving Ease				Growth and Maternal					
	DIR	DTRS	GL	BWT	200	400	600	MCW	MILK
EBVs	-0.5	-4.6	-4.0	5.1	59	105	138	120	21
Acc	54	43	85	73	67	65	64	60	56
Fertility				Carcase					
	SS	DC	CWT	RIB	RUMP	EMA	RBV	IMF	
EBVs	2.4	-3.9	76	-0.8	-2.3	8.7	1.4	3.2	
Acc	59	36	58	60	56	56	57	57	
	GRN	316	DOM	229	ABI	183	GRS	215	

A very high growth Genuine son out of a two year old Momentous daughter. S189 is ranked equal #8 ranked for 600D Growth in the Sale, top 11% of the breed.



78 LAWSONS QUANTUM S140 AI

Birth Date: 6/3/21 AM: AM1% NH: NH1% CA: CAFU DD: DD1%
 Society ID: VLY21S140 ASA: HBR Johnes: J-Bas 6 Mob: S ROMA 22 JBAS J-Bas 6
 Sire: **GAR QUANTUM** GAR MOMENTUM GAR PROGRESS GAR BIG EYE 1770 CONNEALY IN SURE 8524 EAGLEHAWK JEDDA Z48
 GAR IN SURE 1524
 GAR SUNRISE
 Dam: **LAWSONS SUNRISE P41** MCC DAYBREAK GAR OBJECTIVE R227 LAWSONS NOVAK E313 LAWSONS SOLUTION D162
 LAWSONS NOVAK K518

July 2022 Trans Tasman Angus Cattle Evaluation									
Calving Ease ✓				Growth and Maternal					
	DIR	DTRS	GL	BWT	200	400	600	MCW	MILK
EBVs	2.4	1.5	-2.0	3.6	54	98	122	97	22
Acc	54	45	85	73	67	64	65	61	57
Fertility				Carcase					
	SS	DC	CWT	RIB	RUMP	EMA	RBV	IMF	
EBVs	1.8	-3.9	72	-1.5	-1.9	9.6	1.4	3.3	
Acc	59	36	58	60	57	57	57	57	
	GRN	328	DOM	240	ABI	198	GRS	225	



S133 ranks in the top 10% of the breed for Marbling (IMF). Please do not underestimate the genetic potential in these younger bulls. Sale weight has no correlation with genetic potential whatsoever, unfortunately it is still closely related to bull prices so clearly we still have a lot of work to take our Industry forward! Top 10% of the breed for Heavy Grain Index (GRN) and Eye Muscle Area (EMA).

79 LAWSONS QUANTUM S156 AI

Birth Date: 8/3/21 AM: AMFU NH: NHFU CA: CAFU DD: DDF
 Society ID: VLY21S156 ASA: APR Johnes: J-Bas 6 Mob: S ROMA 22 JBAS J-Bas 6
 Sire: **GAR QUANTUM** GAR MOMENTUM GAR PROGRESS GAR BIG EYE 1770 CONNEALY IN SURE 8524 EAGLEHAWK JEDDA Z48
 GAR IN SURE 1524
 AYRVALE BARTEL E7
 Dam: **LAWSONS BARTEL E7 K353** TE MANIA BARTEL B219 EAGLEHAWK JEDDA B32 TEHAMA SCHWARZENEGGER N600 LAWSONS NEW DESIGN 1407 A730
 LAWSONS SCHWARZENEGGER C829

July 2022 Trans Tasman Angus Cattle Evaluation									
Calving Ease ✓				Growth and Maternal					
	DIR	DTRS	GL	BWT	200	400	600	MCW	MILK
EBVs	3.7	4.2	-2.3	3.4	51	91	111	83	22
Acc	55	46	85	73	67	64	64	61	58
Fertility				Carcase					
	SS	DC	CWT	RIB	RUMP	EMA	RBV	IMF	
EBVs	2.6	-5.5	70	-0.6	-0.6	10.3	1.2	3.1	
Acc	60	40	59	61	58	57	58	57	
	GRN	332	DOM	248	ABI	207	GRS	235	



Deep bodied Quantum x Bartel E7, attractive outlook and super disposition, S156 ranks in the top 10% of the breed for Heavy Grain Index (GRN) and Eye Muscle Area (EMA).

80 LAWSONS MOMENTOUS S111 AI

Birth Date: 1/3/21 AM: AMFU NH: NHFU CA: CAFU DD: DDFU
 Society ID: VLY21S111 ASA: HBR Johnes: J-Bas 6 Mob: S ROMA 22 JBAS J-Bas 6
 Sire: GAR MOMENTUM GAR PROGRESS GAR BIG EYE 1770 TE MANIA AFRICA A217 EAGLEHAWK JEDDA Z48
 LAWSONS MOMENTOUS M518 LAWSONS AFRICA H229
 Dam: ALLOURA GET CRACKING G10 TE MANIA BERKLEY B1 ALLOURA JEDDA Z15 GAR SUNRISE LAWSONS GET CRACKING P1124 LAWSONS SUNRISE M765 LAWSONS NZ09104 K1108

July 2022 Trans Tasman Angus Cattle Evaluation									
Calving Ease					Growth and Maternal				
	DIR	DTRS	GL	BWT	200	400	600	MCW	MILK
EBVs	3.5	0.3	-5.3	3.6	53	97	118	91	23
Acc	61	52	85	73	68	65	65	63	61
Fertility			Carcase						
	SS	DC	CWT	RIB	RUMP	EMA	RBV	IMF	
EBVs	1.5	-4.4	66	-0.7	-0.9	12.4	0.3	4.5	
Acc	61	41	61	63	60	59	59	60	
	GRN	354	DOM	249	ABI	200	GRS	237	

Top 5% of the breed for Heavy Grain Index (GRN). #5 Eye Muscle Area (EMA) bull in the Sale at +12.4 and equal #2 for Marbling (IMF) at +4.5, both top 2% of the breed for these important drivers of meat quality (MSA) and yield.



81 LAWSONS MOMENTOUS S190 AI

Birth Date: 1/4/21 AM: AMFU NH: NHFU CA: CAFU DD: DDFU
 Society ID: VLY21S190 ASA: HBR Johnes: J-Bas 6 Mob: S ROMA 22 JBAS J-Bas 6
 Sire: GAR MOMENTUM GAR PROGRESS GAR BIG EYE 1770 TE MANIA AFRICA A217 EAGLEHAWK JEDDA Z48
 LAWSONS MOMENTOUS M518 LAWSONS AFRICA H229
 Dam: ALLOURA GET CRACKING G10 TE MANIA BERKLEY B1 ALLOURA JEDDA Z15 HPCA INTENSITY 7102 LAWSONS INTENSITY L721 LAWSONS TRUST J638

July 2022 Trans Tasman Angus Cattle Evaluation									
Calving Ease					Growth and Maternal				
	DIR	DTRS	GL	BWT	200	400	600	MCW	MILK
EBVs	-6.1	-5.1	-1.7	6.5	55	98	122	101	22
Acc	61	52	85	73	68	65	66	64	61
Fertility			Carcase						
	SS	DC	CWT	RIB	RUMP	EMA	RBV	IMF	
EBVs	1.5	-4.6	68	-0.6	-0.9	12.3	0.2	4.5	
Acc	62	42	62	63	60	60	60	60	
	GRN	316	DOM	218	ABI	171	GRS	204	

S190 is the equal #6 Eye Muscle Area (EMA) bull in the Sale at +12.3 and equal #2 for Marbling (IMF) at +4.5, both top 2% of the breed for these important drivers of meat quality (MSA) and yield.



82 LAWSONS QUANTUM S165 AI

Birth Date: 9/3/21 AM: AMFU NH: NHFU CA: CAFU DD: DDFU
 Society ID: VLY21S165 ASA: HBR Johnes: J-Bas 6 Mob: S ROMA 22 JBAS J-Bas 6
 Sire: GAR MOMENTUM GAR PROGRESS GAR BIG EYE 1770 CONNEALY IN SURE 8524 EAGLEHAWK JEDDA Z48
 GAR QUANTUM GAR IN SURE 1524
 Dam: GAR ASHLAND GAR EARLY BIRD CHAIR ROCK AMBUSH 1018 AYRVALE BARTEL E7 LAWSONS ASHLAND Q53 LAWSONS BARTEL E7 L647 LAWSONS NOVAK H194

July 2022 Trans Tasman Angus Cattle Evaluation									
Calving Ease					Growth and Maternal				
	DIR	DTRS	GL	BWT	200	400	600	MCW	MILK
EBVs	0.9	3.0	-2.4	4.0	57	101	125	93	22
Acc	54	44	85	73	67	64	64	60	56
Fertility			Carcase						
	SS	DC	CWT	RIB	RUMP	EMA	RBV	IMF	
EBVs	2.5	-3.5	75	-1.7	-2.0	11.8	2.0	3.1	
Acc	59	36	58	60	57	57	57	57	
	GRN	348	DOM	257	ABI	214	GRS	244	

The top end of the performance genetics globally, combining two of the elite Gardiner Angus Ranch (GAR) sires in Quantum and out of a two year old Ashland daughter. Massive growth in this calving-ease bull and well below average Mature Cow weight (MCW), so exceptionally well balanced across all key traits; top 5% of the breed for Heavy Grain Index (GRN) and Eye Muscle Area (EMA).



83 LAWSONS ASHLAND S139 AI

Birth Date: 6/3/21 AM: AMFU NH: NHFU CA: CAFU DD: DDF
 Society ID: VLY21S139 ASA: HBR Johnes: J-Bas 6 Mob: S ROMA 22 JBAS J-Bas 6
 Sire: GAR ASHLAND GAR EARLY BIRD GAR DAYLIGHT GAR PROGRESS 830 B/R AMBUSH 28 EAGLEHAWK JEDDA Z48
 CHAIR ROCK AMBUSH 1018
 TUWHARETOA REGENT D145
 Dam: LAWSONS REGENT J429 TE MANIA AMBASSADOR A134 LAWSONS HENRY VIII Y5 LAWSONS DINKY-DI Z191 LAWSONS PREDESTINED C1105
 LAWSONS DINKY DI E1143

July 2022 Trans Tasman Angus Cattle Evaluation

Calving Ease		Growth and Maternal								
		DIR	DTRS	GL	BWT	200	400	600	MCW	MILK
EBVs	0.3	2.2	-5.0	3.9	51	92	117	84	19	
Acc	61	50	85	75	70	67	68	66	62	
Fertility		Carcase								
		SS	DC	CWT	RIB	RUMP	EMA	RBV	IMF	
EBVs	0.9	-3.8	70	-1.2	-1.8	9.9	1.7	3.3		
Acc	64	42	62	64	61	61	61	61		
		GRN	332	DOM	246	ABI	199	GRS	232	

Top 10% of the breed for Heavy Grain Index (GRN) and Eye Muscle Area (EMA).



84 LAWSONS MOMENTUM S146 AI

Birth Date: 6/3/21 AM: AMFU NH: NHFU CA: CAFU DD: DDF
 Society ID: VLY21S146 ASA: HBR Johnes: J-Bas 6 Mob: S ROMA 22 JBAS J-Bas 6
 Sire: GAR MOMENTUM GAR PROGRESS GAR PREDESTINED GAR OBJECTIVE 2345 ALC BIG EYE D09N EAGLEHAWK JEDDA Z48
 GAR BIG EYE 1770
 GAR SURE FIRE CONNEALY IN SURE 8524 CHAIR ROCK 5050 GAR 8086 TOPBOS AMBASSADOR F4 LAWSONS TOTAL G1144
 Dam: LAWSONS SURE FIRE N26 LAWSONS AMBASSADOR J153

July 2022 Trans Tasman Angus Cattle Evaluation

Calving Ease		Growth and Maternal								
		DIR	DTRS	GL	BWT	200	400	600	MCW	MILK
EBVs	5.2	1.2	-2.4	1.5	46	87	105	76	24	
Acc	62	55	85	74	68	66	67	66	63	
Fertility		Carcase								
		SS	DC	CWT	RIB	RUMP	EMA	RBV	IMF	
EBVs	1.5	-1.4	63	-0.9	-1.0	9.5	0.5	4.4		
Acc	63	46	63	65	63	62	63	62		
		GRN	331	DOM	229	ABI	180	GRS	217	

Top 10% of the breed for Heavy Grain Index (GRN) and Eye Muscle Area (EMA), top 5% for Marbling (IMF).



85 LAWSONS ASHLAND S159 AI

Birth Date: 8/3/21 AM: AMFU NH: NHFU CA: CAFU DD: DDFU
 Society ID: VLY21S159 ASA: HBR Johnes: J-Bas 6 Mob: S ROMA 22 JBAS J-Bas 6
 Sire: GAR ASHLAND GAR EARLY BIRD GAR DAYLIGHT GAR PROGRESS 830 B/R AMBUSH 28 EAGLEHAWK JEDDA Z48
 CHAIR ROCK AMBUSH 1018
 GAR MOMENTUM GAR PROGRESS GAR BIG EYE 1770
 Dam: LAWSONS MOMENTUM P420 LAWSONS INCREDIBLE H803 LAWSONS ULTIMATE F106
 LAWSONS INCREDIBLE L825

July 2022 Trans Tasman Angus Cattle Evaluation

Calving Ease		Growth and Maternal								
		DIR	DTRS	GL	BWT	200	400	600	MCW	MILK
EBVs	2.3	4.2	-2.4	2.7	55	96	119	86	21	
Acc	60	48	85	74	68	66	66	63	60	
Fertility		Carcase								
		SS	DC	CWT	RIB	RUMP	EMA	RBV	IMF	
EBVs	1.0	-1.8	67	-1.7	-1.9	11.2	1.4	3.6		
Acc	63	37	60	62	60	60	60	60		
		GRN	358	DOM	256	ABI	205	GRS	242	

Top 5% of the breed for Heavy Grain Index (GRN) and Eye Muscle Area (EMA) plus top 10% for Marbling (IMF).



86 LAWSONS QUANTUM S188 AI

Birth Date: 1/4/21 AM: AMFU NH: NHFU CA: CAFU DD: DDFU
 Society ID: VLY21S188 ASA: HBR Johnes: J-Bas6 Mob: S ROMA 22 JBAS J-Bas6
 Sire: GAR QUANTUM
 GAR MOMENTUM
 GAR IN SURE 1524
 Dam: LAWSONS KODAK P1439
 LAWSONS GENERAL J31
 GAR PROGRESS
 GAR BIG EYE 1770
 CONNEALY IN SURE 8524
 EAGLEHAWK JEDDA Z48
 RENNYLEA EDMUND E11
 RENNYLEA EISA ERICA F810
 LAWSONS GENERAL G1730
 LAWSONS AMBUSH E435

July 2022 Trans Tasman Angus Cattle Evaluation

	Calving Ease				Growth and Maternal				
	DIR	DTRS	GL	BWT	200	400	600	MCW	MILK
EBVs	1.3	2.5	-2.8	4.3	55	99	123	109	18
Acc	50	43	68	65	63	63	64	60	56
	Fertility				Carcase				
	SS	DC	CWT	RIB	RUMP	EMA	RBV	IMF	
EBVs	3.2	-4.4	76	-0.6	-1.6	10.0	1.5	3.0	
Acc	58	37	58	60	56	56	57	56	
	GRN	306	DOM	227	ABI	191	GRS	213	

Top 10% of the breed for Eye Muscle Area (EMA).



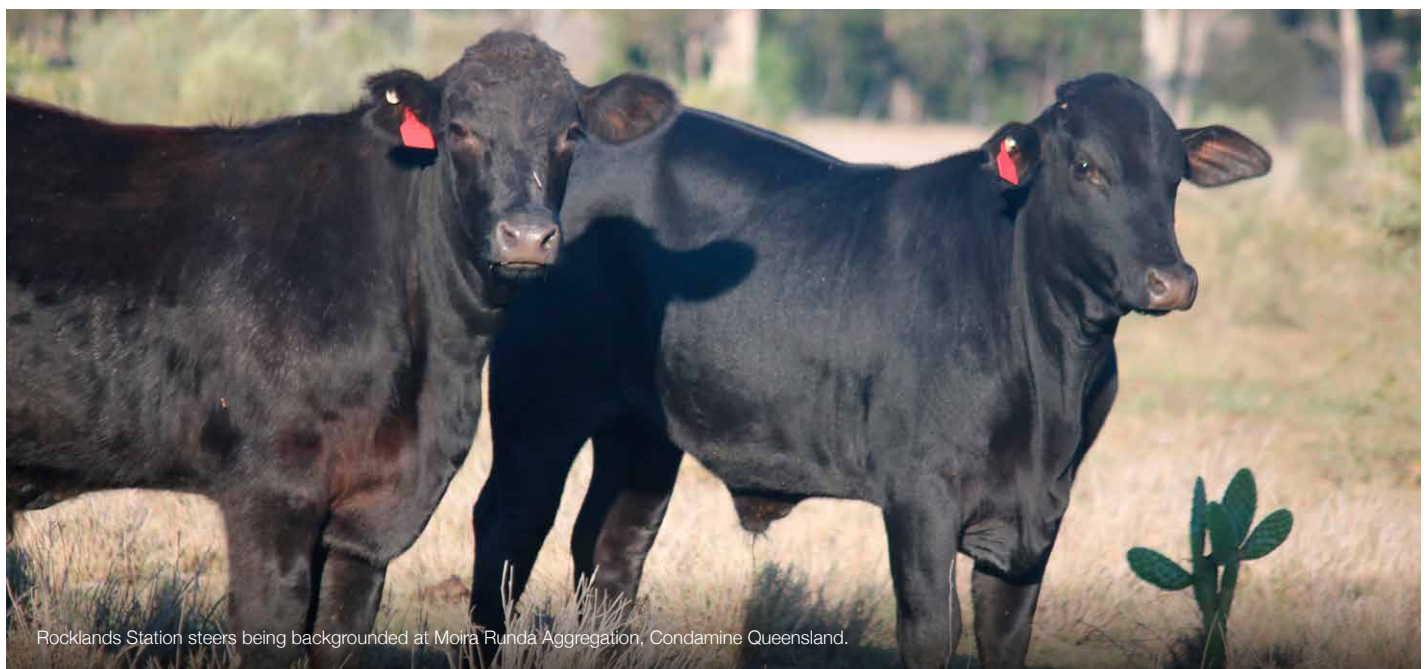
87 LAWSONS MOMENTUM S150 AI

Birth Date: 7/3/21 AM: AMFU NH: NHFU CA: CAFU DD: DDFU
 Society ID: VLY21S150 ASA: APR Johnes: J-Bas6 Mob: S ROMA 22 JBAS J-Bas6
 Sire: GAR MOMENTUM
 GAR PROGRESS
 GAR BIG EYE 1770
 Dam: LAWSONS SURE FIRE N1049
 LAWSONS BARTEL E7 J803
 GAR PREDESTINED
 GAR OBJECTIVE 2345
 ALC BIG EYE D09N
 EAGLEHAWK JEDDA Z48
 CONNEALY IN SURE 8524
 CHAIR ROCK 5050 GAR 8086
 AYRVALE BARTEL E7
 LAWSONS AUTHORITY B1352

July 2022 Trans Tasman Angus Cattle Evaluation

	Calving Ease				Growth and Maternal				
	DIR	DTRS	GL	BWT	200	400	600	MCW	MILK
EBVs	4.6	2.5	-1.9	2.2	47	84	100	73	20
Acc	62	55	84	73	65	65	66	66	63
	Fertility				Carcase				
	SS	DC	CWT	RIB	RUMP	EMA	RBV	IMF	
EBVs	1.7	-2.6	62	-0.6	-0.7	10.7	0.9	3.7	
Acc	63	47	63	65	63	62	63	62	
	GRN	327	DOM	234	ABI	190	GRS	221	

Top 10% of the breed for Heavy Grain Index (GRN) and Marbling (IMF) plus top 5% for Eye Muscle Area (EMA).



Rocklands Station steers being backgrounded at Moira Runda Aggregation, Condamine Queensland.

SALE CONDITIONS

BUYERS REBATE

Rebate of 2% is available to outside agents settling on behalf of buyers within 7 days. Buyers must be introduced via email to either Andrew Holt, Nutrien Ag Solutions Roma andrew.holt@nutrien.com.au or lawsons@lawsonsangus.com.au or in writing prior to Sale day. All agent rebates and settling arrangements are to be confirmed on bidding cards on Sale day and agreed to by Nutrien Ag Solutions Roma.

DELIVERY OF SALE BULLS

Lawsons Angus and Selling Agents will do our best to assist in the efficient and safe delivery of your bulls. Buyers, please ensure bulls are insured at the fall of the hammer as our insurance does not cover injury of bulls in transit. Buyers must organise cartage of bulls at their own expense.

REGISTRATION STATUS AND TRANSFER OF BULLS

Most bulls on offer are Registered Herd Book animals with the Angus Society of Australia (ASA). Registration status of bulls is shown in the catalogue. 'H' indicates the animal is registered in the ASA Herd Book, 'A' indicates bulls are registered with ASA Performance Register (APR). All bulls will be transferred to purchaser at no cost on request. Non-transfer commercial bulls are denoted 'NT' or 'COM' status.

HEALTH STATUS OF BULLS

All bulls have been independently semen and morphology tested including a physical evaluation of the bulls reproductive tract.

All bulls offered in this Sale have been vaccinated with Ultravac 7 in 1, Vibriosis, Pesti Guard (BVD), tick fever and 3-day sickness.

3 YEAR BULL GUARANTEE

All bulls have undergone rigorous and independent assessments for fertility, including a semen test and physical evaluation of the bulls reproductive tract. On top of this we offer the strongest guarantee of any seedstock herd in Australia.

All breeding cattle sold by Lawsons Angus are fertile and structurally sound to the best of our knowledge. If a bull becomes infertile or breaks down due to reasons other than injury or misadventure, at any time in the next 36 months, we will:

1. provide you with a satisfactory replacement if available, or
2. issue you with a credit equal to purchase price minus salvage value, that may be used to purchase any animal in future Lawsons Angus sales.

The Lawsons Angus 3 year bull guarantee is not a life insurance policy. Normal care needs to be taken as we cannot replace an animal that is injured or dies for any reason. We recommend you insure animals against injury. An insurance service will be available on Sale day.

This guarantee is in addition to normal terms and conditions governing auction sales, and as such the discretion and final decision as to issuing a credit will be with the vendor. Any credit will be limited to bull purchase price less salvage value and not include any costs, damages or loss of income incurred as a result of claims under this guarantee.

OUR 3 YEAR BULL GUARANTEE IS THE GREATEST WARRANTY PROVIDED BY ANY SEEDSTOCK HERD IN AUSTRALIA.

CALVING EASE

We have included a red tick in summary pages and individual catalogue information for bulls that we recommend are suitable to use in most situations over yearling heifers. Most of these bulls are ≥ 1.8 for Calving Ease Direct (DIR) and less than breed average birth weight (≤ 4.3 Birth Weight EBVs). We believe this combination gives you the best risk management guide for selecting bulls to mate yearling heifers and simplifies the information so that you can focus on improving other key economic traits. We urge breeders not to over analyse this information and narrow down selection options as is often the case. There are a few exceptions that we have made to these EBVs criteria, but we believe these bulls to also be safe calving ease candidates. Individual herds may use bulls outside this recommended range depending on their maternal herd and production system, but these are our recommended 'safe' heifer specifications and they are working well for commercial beef herds.

We also recommend you talk to us about helping to develop a pre-calving heifer **management** plan that can be used in conjunction with these EBV specifications to achieve predictable calving ease and rebreeding results for two year old heifers. Remember management of heifers is equally important as the **genetic** potential of the sires and dams to optimise calving and reproductive performance of heifers.

DISCLAIMER

Animal details included in this catalogue, including but not limited to pedigree, DNA information, Estimated Breeding Values (EBVs) and Index values, are based on information provided by the breeder or owner of the animal. Whilst all reasonable care has been taken to ensure that the information provided in this catalogue was correct at the time of publication, neither the vendor, Angus Australia or the selling agents assume any responsibility for the accuracy or completeness of the information, nor for the outcome (including consequential loss) of any action taken based on this information. Buyers should also note other Sale Conditions listed on this page including those under "3 Year Guarantee".

A BRIEF DESCRIPTION OF EBVS AND \$INDEX VALUES

The following is a brief description of EBVs and \$Index values and Accuracies. For a more detailed explanation please refer to Angus Society of Australia web site (www.angusaustralia.com.au).

ACCURACY (%) ~ Provides an indication of the reliability of an EBV. As more performance information becomes available on an animal (or it's progeny, or relatives) then the accuracy of it's EBVs for particular traits will increase.

CALVING EASE DIR (%)
~ Estimates of the genetic differences between animals in the ability of their calves, from 2 year old heifers, to be delivered without assistance.

CALVING EASE DTRS (%)
~ Estimates of the genetic differences between animals in the ability of their 2 year old daughters to calve without assistance.

GESTATION LENGTH (DAYS)
~ Estimates of the genetic differences between animals in the number of days from the date of conception to the calf birth date.

BIRTH WT (KG) ~ Estimates of the genetic differences between animals in calf birth weight.

200-DAY WT (KG) ~ Estimates of the genetic differences between animals in liveweight at 200 days of age.

400-DAY WT (KG) ~ Estimates of the genetic differences between animals in liveweight at 400 days of age.

600-DAY WT (KG) ~ Estimates of the genetic differences between animals in liveweight at 600 days of age.

MATURE COW WEIGHT (KG) ~ Estimates of the genetic differences between animals in cow weight at 5 years of age.

MILK (KG) ~ Estimates of the genetic differences between animals in milk and animals in percentage retail beef yield, in a 300kg carcass.

INTRA-MUSCULAR FAT % (IMF%) ~ Estimates of the genetic differences between animals in percentage intra-muscular fat (marbling) at the 12/13th rib site, in a 300 kg carcass.

ANGUS BREEDING INDEX
~ Estimates the genetic differences between animals in net profitability per cow joined in a typical commercial self replacing herd using Angus bulls. This selection index is not specific to a particular production system or market end-point, but identifies animals

that will improve overall profitability in the majority of commercial grass and grain finishing beef production systems. The index is particularly suited to commercial producers who sell progeny into different markets, or to seedstock producers supplying bulls to commercial clients who produce for a range of different production systems and market end points.

DOMESTIC INDEX ~ Estimates the genetic differences between animals in net profitability per cow joined in a commercial self replacing herd targeting the domestic supermarket trade, with progeny finished using either grass, grass supplemented by grain or grain finishing systems.

HEAVY GRAIN INDEX ~ Estimates the genetic differences between animals in net profitability per cow joined in a commercial self replacing herd targeting pasture grown steers with a 200 day feedlot finishing period for the grain fed high quality, highly marbled markets.

HEAVY GRASS INDEX ~ Estimates the genetic differences between animals in net profitability per cow joined in a commercial self replacing herd targeting pasture finished heavy steers.





Harry Lawson

0407 101 145

lawsons@lawsonsangus.com.au

LAWSONSANGUS.COM.AU